

MANCHESTER WELLHEAD PROTECTION

CITY OF MANCHESTER, IA
TRIDENT ENVIRONMENTAL SOLUTIONS

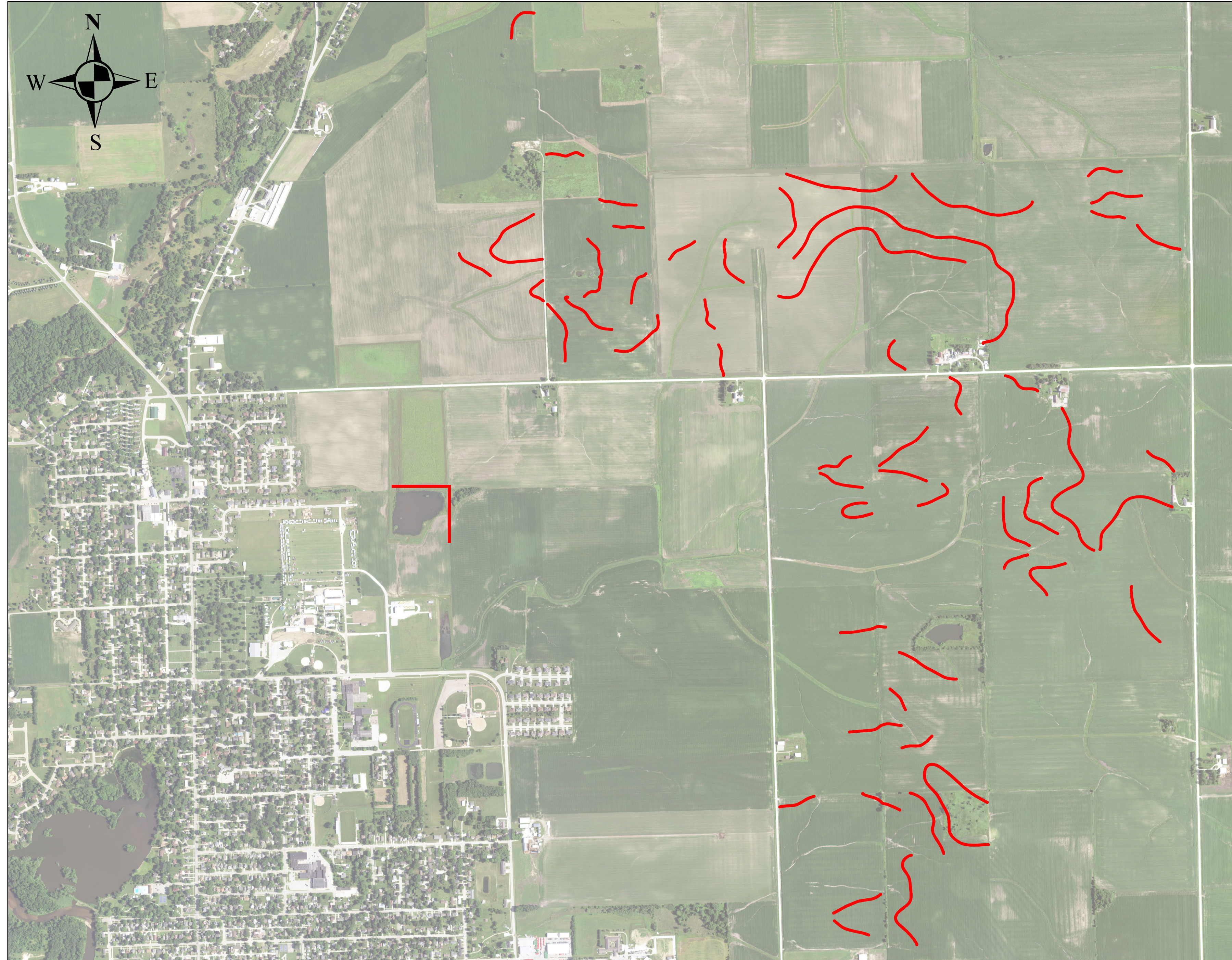
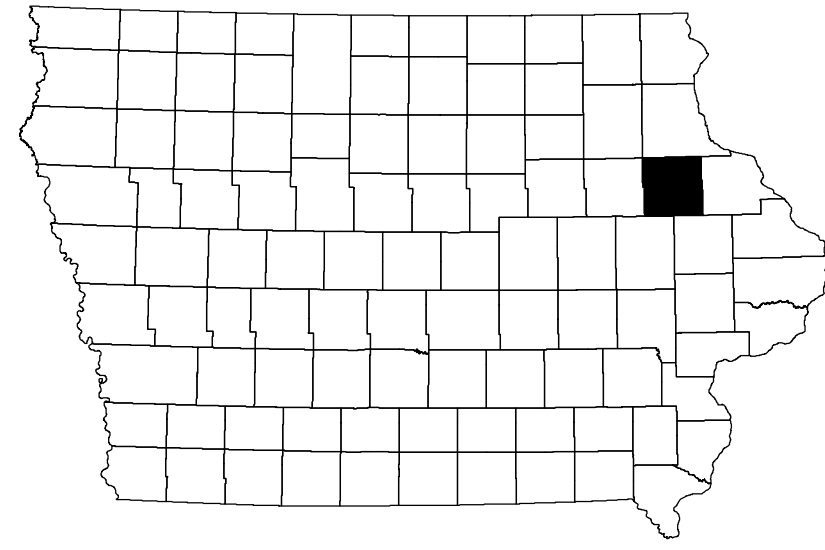


TABLE OF CONTENTS

- 00 - TITLE PAGE
- 01 - RIPARIAN BUFFER ZONE AERIAL
- 02 - RIPARIAN BUFFER ZONE CROSS SECTION (PLANTING)
- 03 - RIPARIAN BUFFER ZONE TREE LAYOUT
- 04 - RIPARIAN BUFFER ZONE CROSS SECTION (MATURE)
- 05 - CONTOUR BUFFER STRIPS AERIAL
- 06 - CONTOUR BUFFER STRIPS CROSS SECTION

PROJECT: MANCHESTER WELLHEAD PROTECTION	DATE: 4/26/20
DRAWN BY: DANIEL MURPHY	REVISION:

THE UNIVERSITY OF IOWA
CIVIL AND ENVIRONMENTAL ENGINEERING
4105 SEAMANS CENTER FOR THE
ENGINEERING ARTS AND SCIENCES
103 S CAPITOL ST
IOWA CITY, IOWA 52242
PHONE: 319.335.5647
FAX: 319.335.5660
EMAIL: civil-hawks@iowa.edu

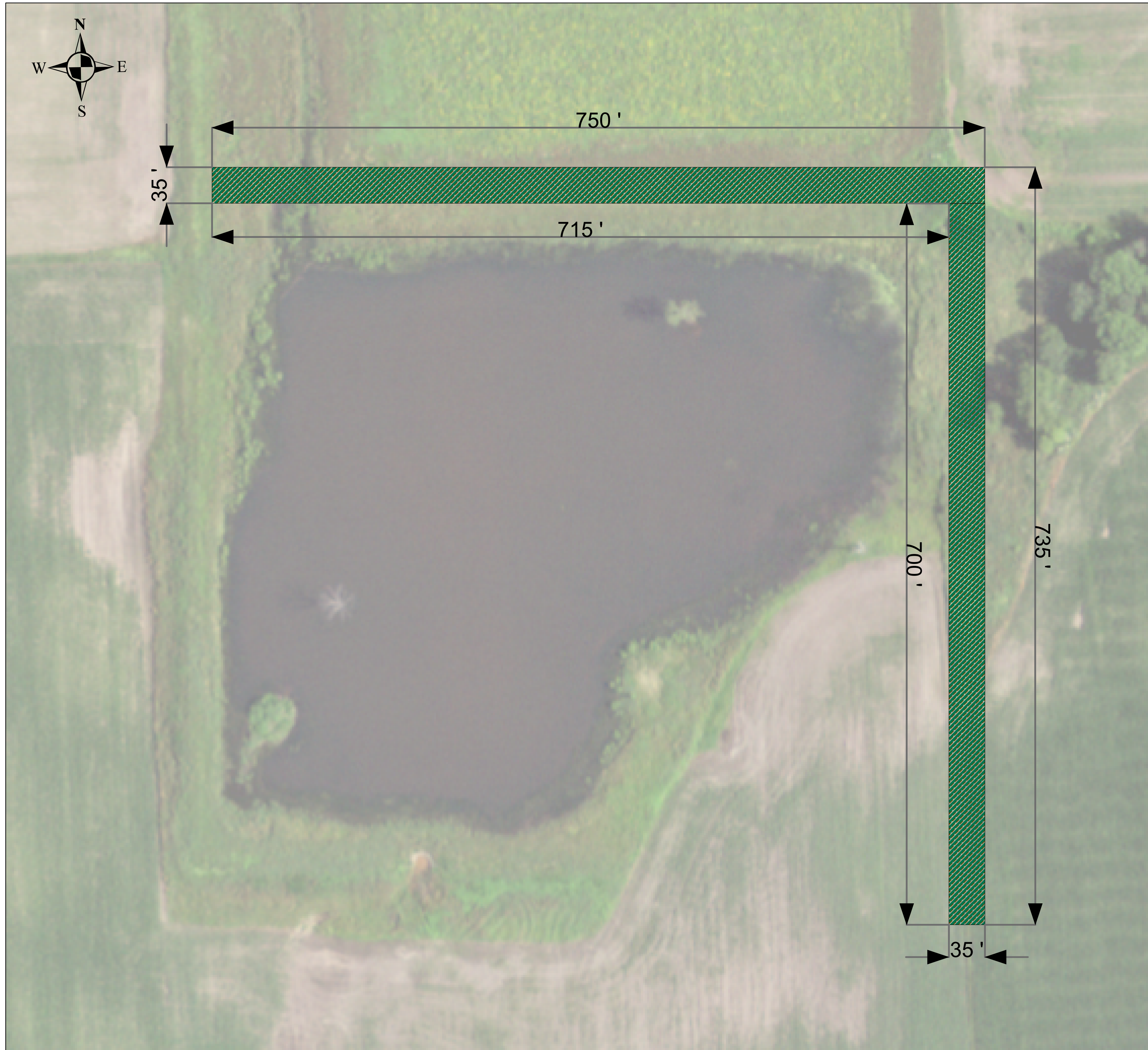


EDUCATIONAL - NOT
FOR CONSTRUCTION

MANCHESTER, IA

SHEET NAME
TITLE SHEET

SHEET NO.
00



Legend

 Riparian Buffer Zone

PROJECT: Manchester Wellhead Protection
DATE : 4/26/20
DRAWN BY: Daniel Murphy
REVISION:

THE UNIVERSITY OF IOWA
CIVIL AND ENVIRONMENTAL ENGINEERING
 4105 SEAMANS CENTER FOR THE
 ENGINEERING ARTS AND SCIENCES
 103 S CAPITOL ST
 IOWA CITY, IOWA 52242
 PHONE: 319.335.5647
 FAX: 319.335.5660
 EMAIL: civil-hawks@uiowa.edu



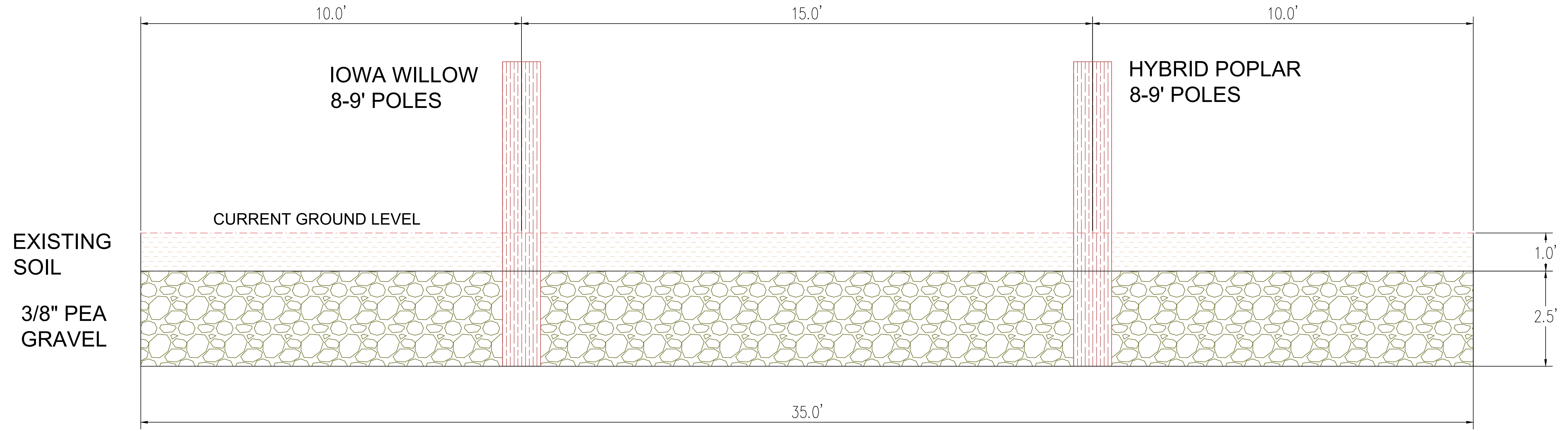
EDUCATIONAL - NOT FOR CONSTRUCTION

MANCHESTER, IA

SHEET NAME
 RIPARIAN BUFFER ZONE

SHEET NO.
01

WETLAND



PROJECT:	MANCHESTER WELHEAD PROTECTION
DATE :	4/26/20
DRAWN BY:	DANIEL MURPHY
REVISION:	

THE UNIVERSITY OF IOWA
CIVIL AND ENVIRONMENTAL ENGINEERING
 4105 SEAMANS CENTER FOR THE
 ENGINEERING ARTS AND SCIENCES
 103 S CAPITOL ST
 IOWA CITY, IOWA 52242
 PHONE: 319.335.5647
 FAX: 319.335.5660
 EMAIL: civil-hawks@iowa.edu

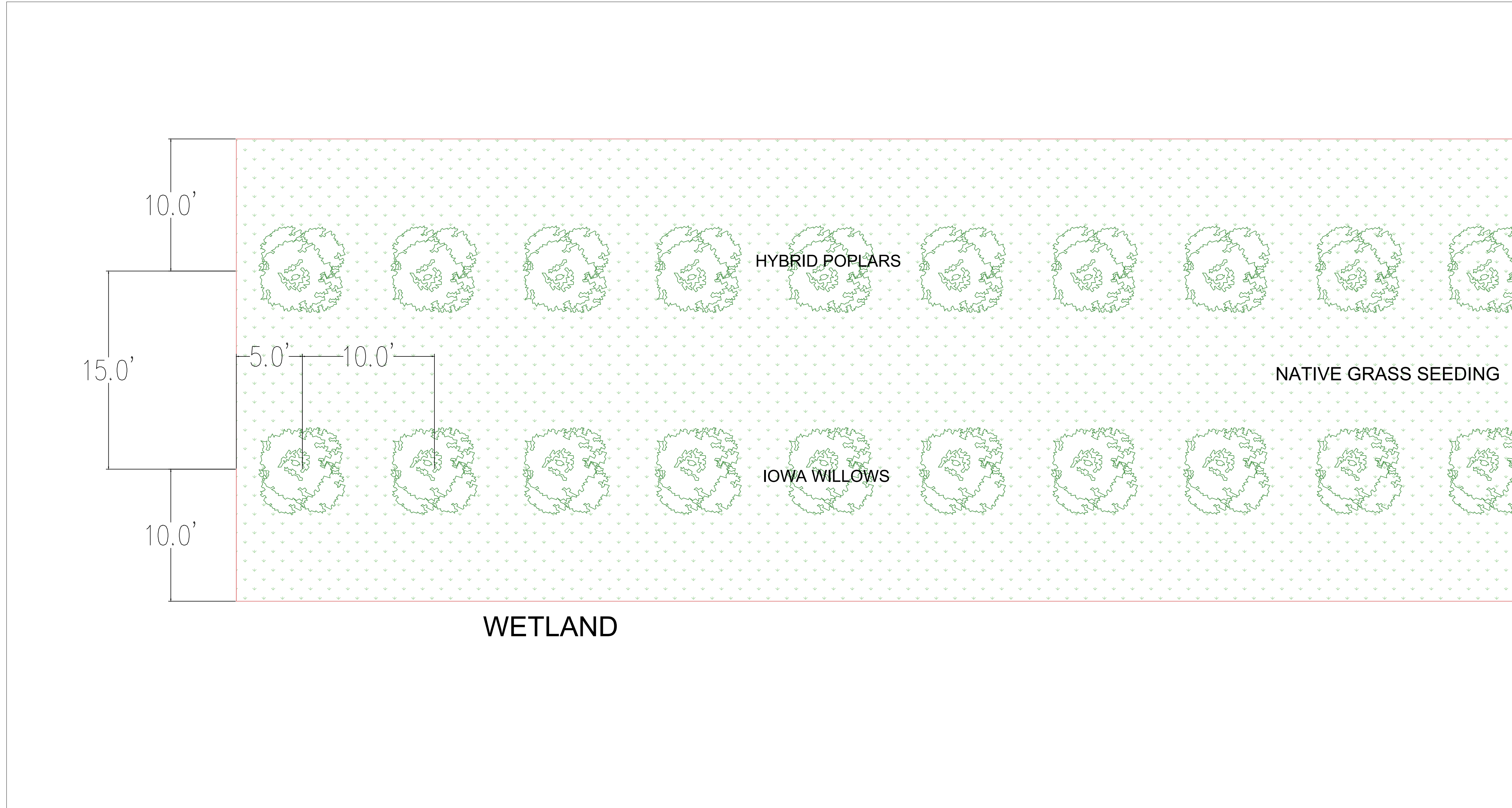


EDUCATIONAL - NOT FOR CONSTRUCTION

MANCHESTER, IA

SHEET NAME
 RIPARIAN BUFFER ZONE
 CROSS SECTION - PLANTING

SHEET NO.
02



WETLAND

HYBRID POPLARS

IOWA WILLOWS

NATIVE GRASS SEEDING

10.0'

15.0'

10.0'

5.0'

10.0'

PROJECT:	MANCHESTER WELHEAD PROTECTION
DATE :	4/26/20
DRAWN BY:	DANIEL MURPHY
REVISION:	

THE UNIVERSITY OF IOWA
CIVIL AND ENVIRONMENTAL ENGINEERING
 4105 SEAMANS CENTER FOR THE
 ENGINEERING ARTS AND SCIENCES
 103 S CAPITOL ST
 IOWA CITY, IOWA 52242
 PHONE: 319.335.5647
 FAX: 319.335.5660
 EMAIL: civil-hawks@iowa.edu



EDUCATIONAL - NOT FOR CONSTRUCTION

MANCHESTER, IA

SHEET NAME
 RPZ TREE LAYOUT

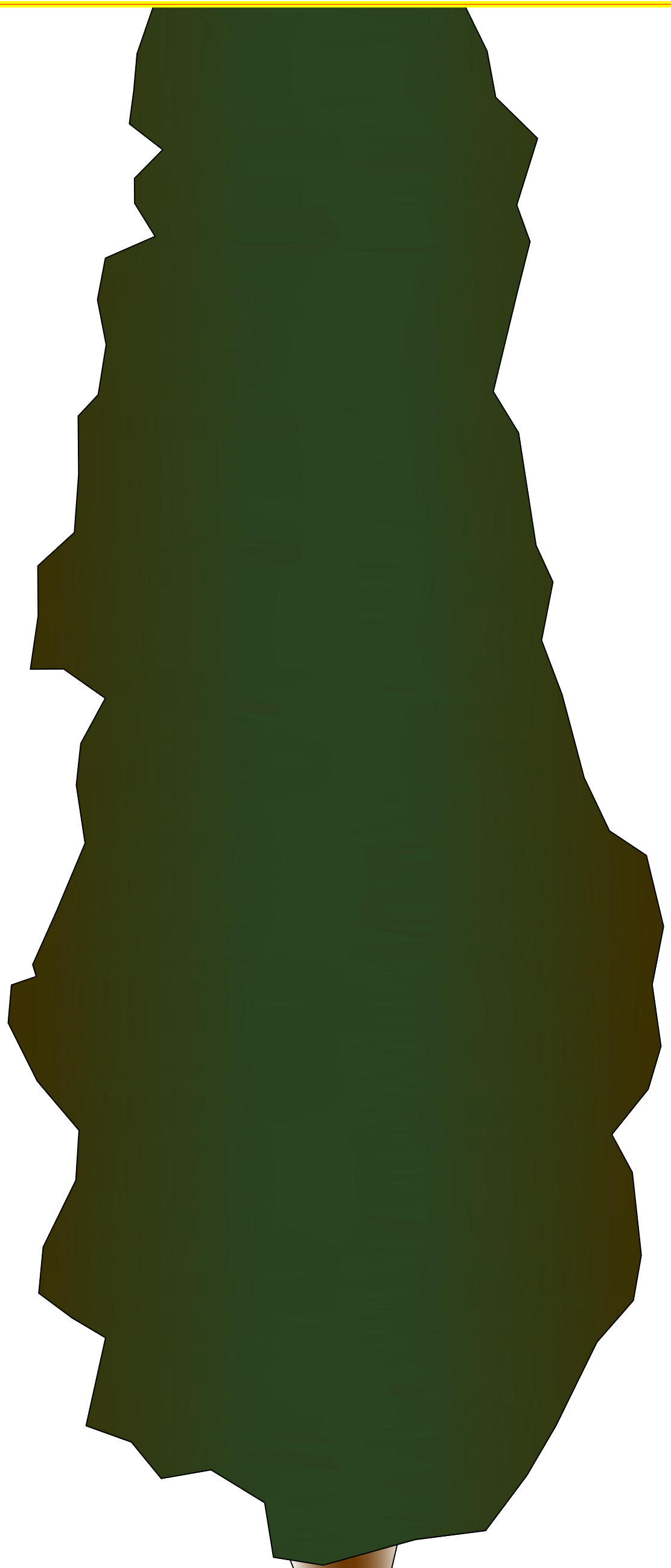
SHEET NO.
03

← WETLAND

IOWA WILLOW



HYBRID POPLAR



PROJECT:	MANCHESTER WELHEAD PROTECTION
DATE :	4/26/20
DRAWN BY:	DANIEL MURPHY
REVISION:	

THE UNIVERSITY OF IOWA
CIVIL AND ENVIRONMENTAL ENGINEERING
 4105 SEAMANS CENTER FOR THE
 ENGINEERING ARTS AND SCIENCES
 103 S CAPITOL ST
 IOWA CITY, IOWA 52242
 PHONE: 319.335.5647
 FAX: 319.335.5660
 EMAIL: civil-hawks@iowa.edu

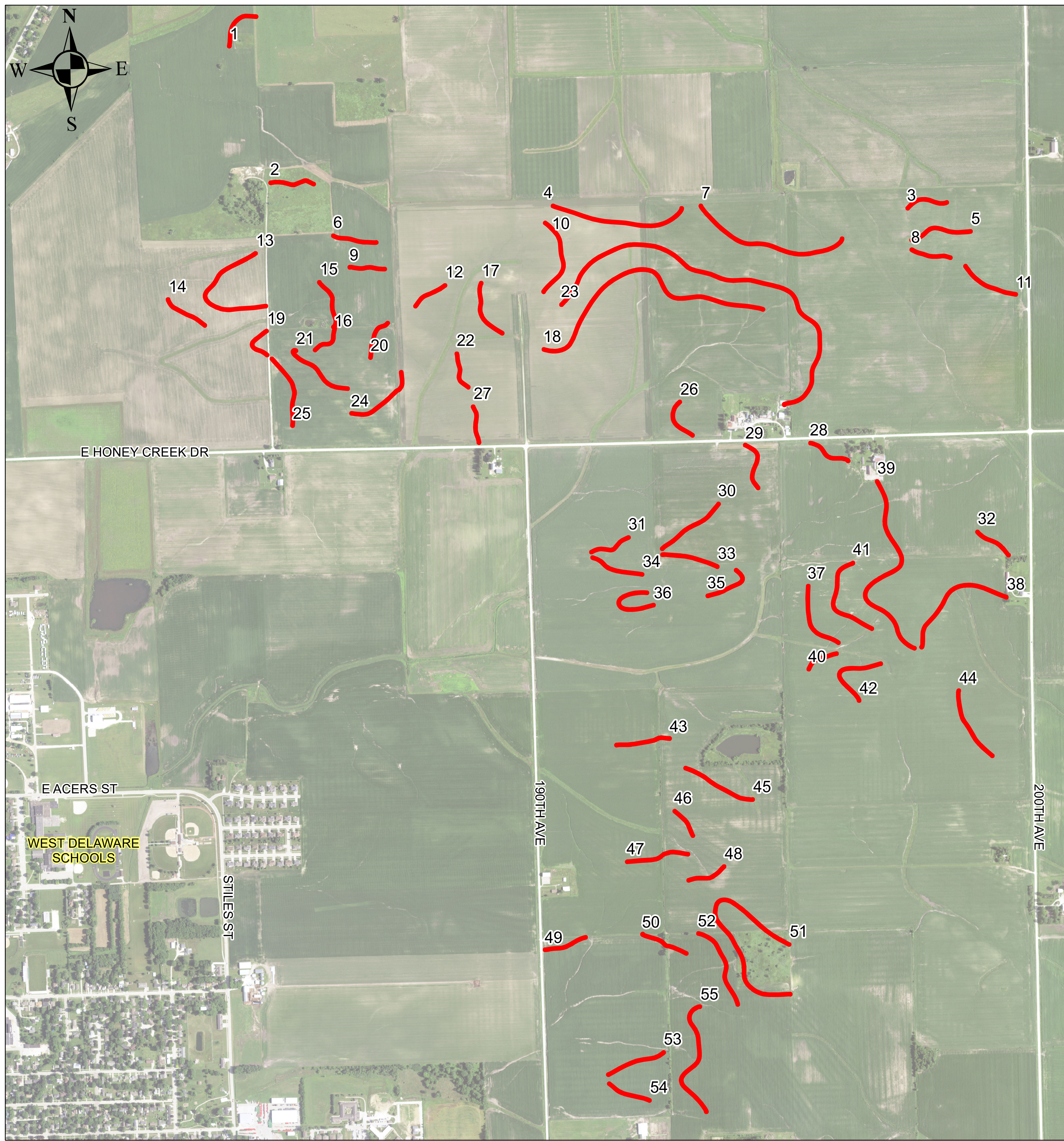


EDUCATIONAL - NOT FOR CONSTRUCTION

MANCHESTER, IA

SHEET NAME
 RIPARIAN BUFFER ZONE
 CROSS SECTION - MATURE

SHEET NO.
04



LENGTH OF EACH CONTOUR BUFFER STRIP

ID	LENGTH (FT)	ID	LENGTH (FT)
1	1086	31	958
2	1014	32	897
3	968	33	1267
4	3017	34	1203
5	1403	35	1142
6	989	36	1570
7	3548	37	1625
8	908	38	2731
9	807	39	4661
10	1820	40	767
11	1332	41	2150
12	840	42	1732
13	2957	43	1214
14	1040	44	1696
15	1148	45	1663
16	765	46	716
17	1354	47	1400
18	5960	48	904
19	890	49	973
20	947	50	1093
21	1614	51	4883
22	868	52	1926
23	8831	53	1345
24	1649	54	1004
25	1657	55	2841
26	1022		
27	849		
28	998		
29	1163		
30	1613		

LEGEND

CONTOUR BUFFER STRIPS

PROJECT: MANCHESTER WELHEAD PROTECTION
 DATE: 4/26/20
 DRAWN BY: DANIEL MURPHY
 REVISION:

THE UNIVERSITY OF IOWA
CIVIL AND ENVIRONMENTAL ENGINEERING
 4105 SEAMANS CENTER FOR THE
 ENGINEERING ARTS AND SCIENCES
 103 S CAPITOL ST
 IOWA CITY, IOWA 52242
 PHONE: 319.335.5647
 FAX: 319.335.5660
 EMAIL: civil-hawks@iowa.edu



EDUCATIONAL - NOT FOR CONSTRUCTION

MANCHESTER, IA

SHEET NAME
 CONTOUR BUFFER STRIPS

SHEET NO.
05



PROJECT:	MANCHESTER WELHEAD PROTECTION
DATE :	4/26/20
DRAWN BY:	DANIEL MURPHY
REVISION:	

THE UNIVERSITY OF IOWA
CIVIL AND ENVIRONMENTAL ENGINEERING
 4105 SEAMANS CENTER FOR THE
 ENGINEERING ARTS AND SCIENCES
 103 S CAPITOL ST
 IOWA CITY, IOWA 52242
 PHONE: 319.335.5647
 FAX: 319.335.5660
 EMAIL: civil-hawks@iowa.edu



EDUCATIONAL - NOT FOR CONSTRUCTION

MANCHESTER, IA

SHEET NAME
 AGRICULTURAL BUFFERS
 CROSS SECTION

SHEET NO.
06