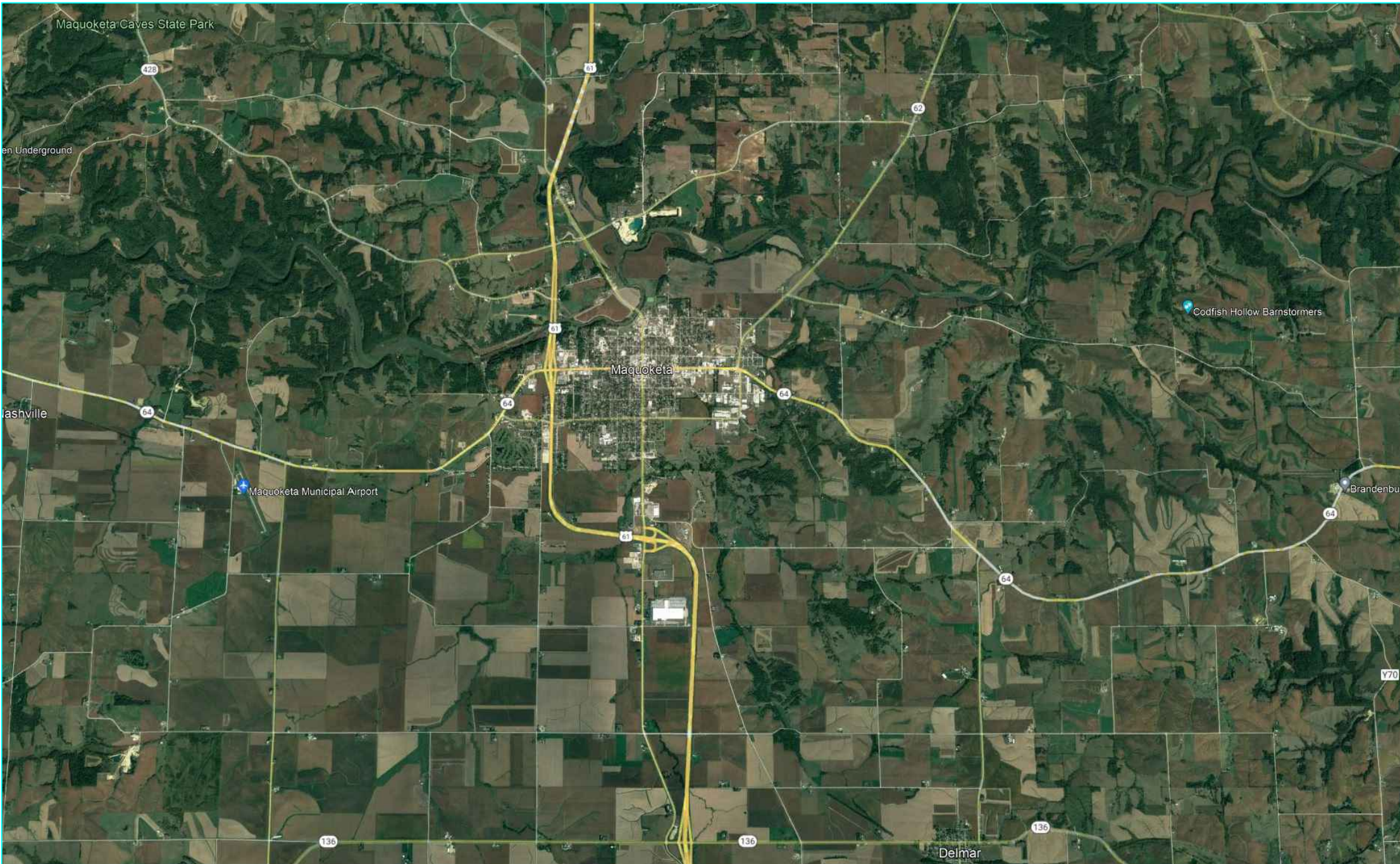


# SW MAQUOKETA LAND USE PLAN



**CITY OF MAQUOKETA  
201 E PLEASANT ST.  
MAQUOKETA, IA 52060**

SHEET LIST TABLE	
SHEET NUMBER	SHEET TITLE
C100	COVER SHEET
C101	SITE OVERVIEW & PROPOSED ZONING
C102	STREET LAYOUT
C103	STREET CROSS-SECTIONS
C104	STREET CROSS-SECTIONS CONT.
C105	STORMWATER MANAGEMENT
C106	BRIDGE DESIGN
C107	WATERMAIN
C108	SANITARY SEWER
C109	TRAIL & GREENSPACE
C110	TRAIL CROSS-SECTION

**OWNER REPRESENTATIVE**

FRANK ELLENZ  
CITY OF MAQUOKETA  
PUBLIC WORKS DIRECTOR  
507 OLD US HIGHWAY 61

**CONSULTANT REPRESENTATIVE**

DRHH CONSULTANTS  
UNIVERSITY OF IOWA  
COLLEGE OF ENGINEERING  
3100 SEAMANS CENTER,  
IOWA CITY, IA 52240



THE PROJECT SITE IS SHOWN ABOVE. THE TOTAL AREA OF THE SITE IS 335 ACRES.

PROJECT:	CEE: 4850
DATE :	05/06/2022
DRAWN BY:	NCR
REVISION:	

**THE UNIVERSITY OF IOWA**  
**CIVIL AND ENVIRONMENTAL ENGINEERING**  
4105 SEAMANS CENTER FOR THE  
ENGINEERING ARTS AND SCIENCES  
103 S CAPITOL ST  
IOWA CITY, IOWA 52242  
PHONE: 319.335.5647  
FAX: 319.335.5660  
EMAIL: civil-hawks@iowa.edu



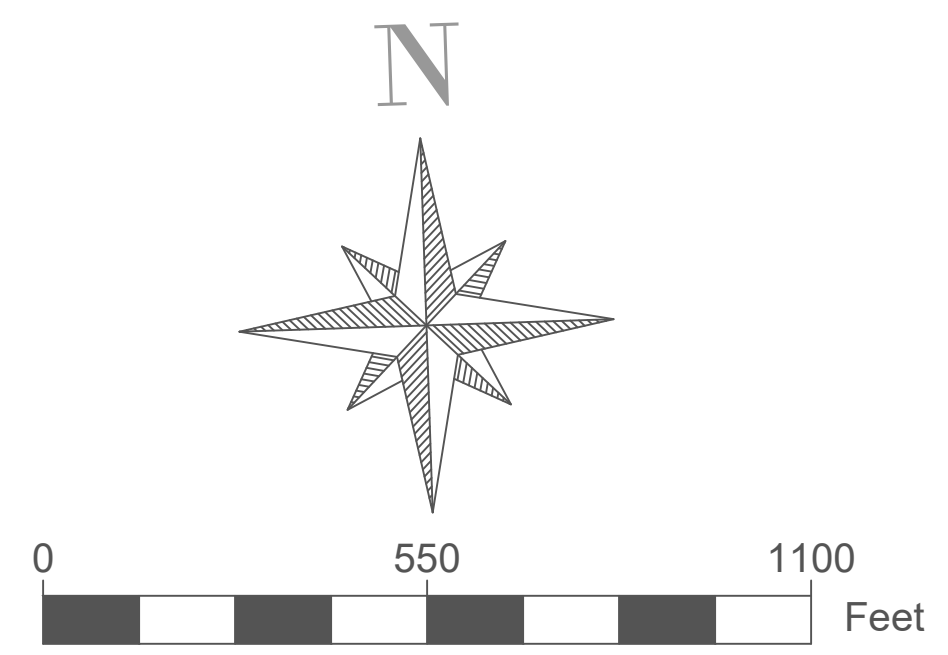
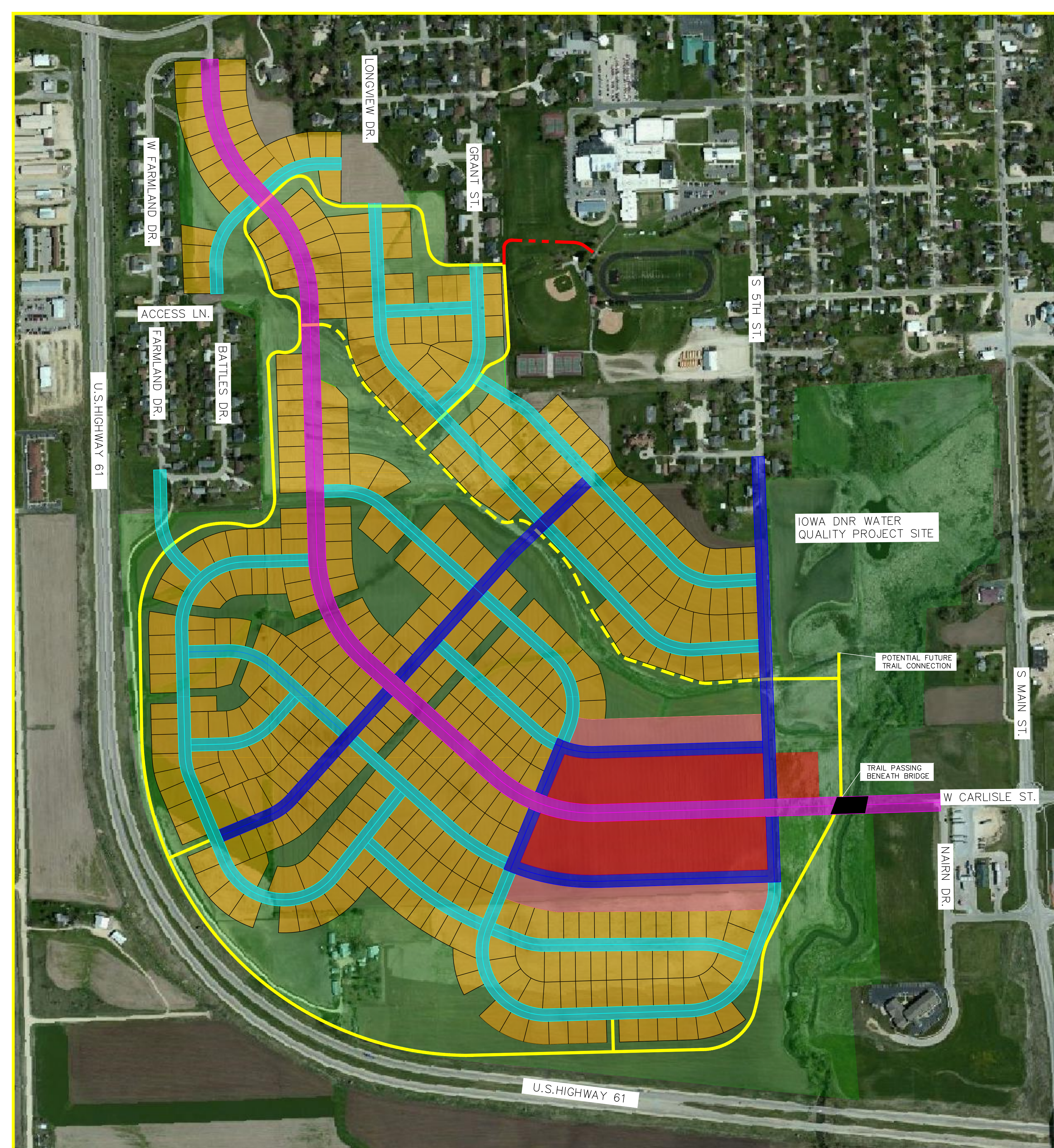
EDUCATIONAL - NOT FOR CONSTRUCTION

**SW Maquoketa Land Use  
Plan**  
MAQUOKETA IOWA

SHEET NAME  
COVER SHEET

SHEET NO.  
**C100**





	ARTERIAL ROAD
	COLLECTOR ROADS
	LOCAL ROADS
	PROPERTY LINES
	PUBLIC OPEN SPACE
	COMMERCIAL DEVELOPMENT
	SINGLE-FAMILY RESIDENTIAL
	MULTI-FAMILY RESIDENTIAL

- MULTI-USE PCC TRAIL WITH 5" DEPTH
- - - MULTI-USE PCC TRAIL WITH 7" DEPTH
- - - MULTI-USE PCC TRAIL WITH 5" DEPTH ON PROPERTY OF MAQUOKETA HIGH SCHOOL

PROJECT:	CEE: 4850
DATE :	05/06/2022
DRAWN BY:	NCR
REVISION:	

**THE UNIVERSITY OF IOWA**  
**CIVIL AND ENVIRONMENTAL ENGINEERING**  
 4105 SEAMANS CENTER FOR THE  
 ENGINEERING ARTS AND SCIENCES  
 103 S CAPITOL ST  
 IOWA CITY, IOWA 52242  
 PHONE: 319.335.5647  
 FAX: 319.335.5660  
 EMAIL: civil-hawks@iowag.edu



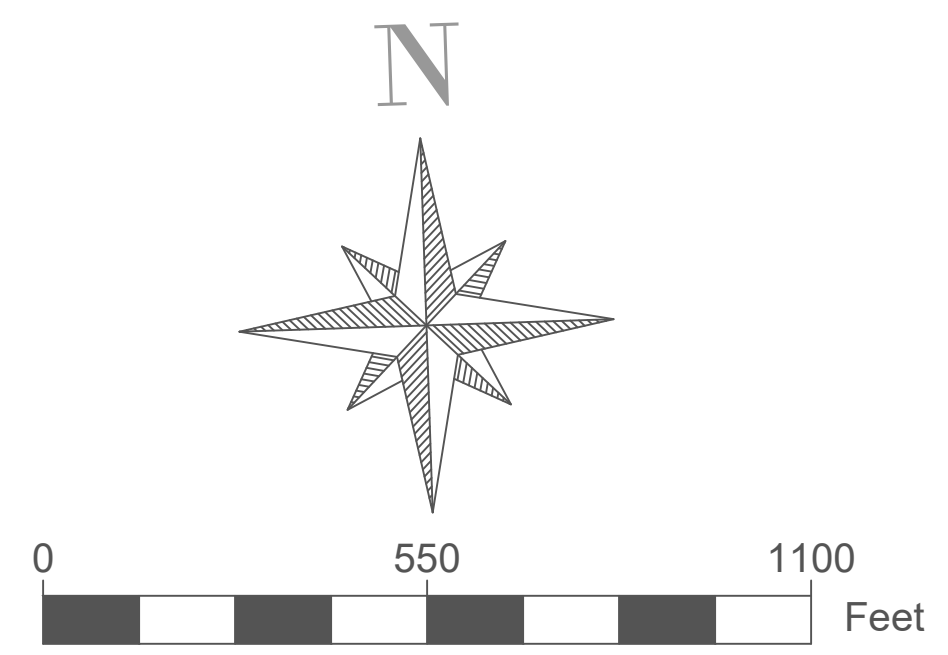
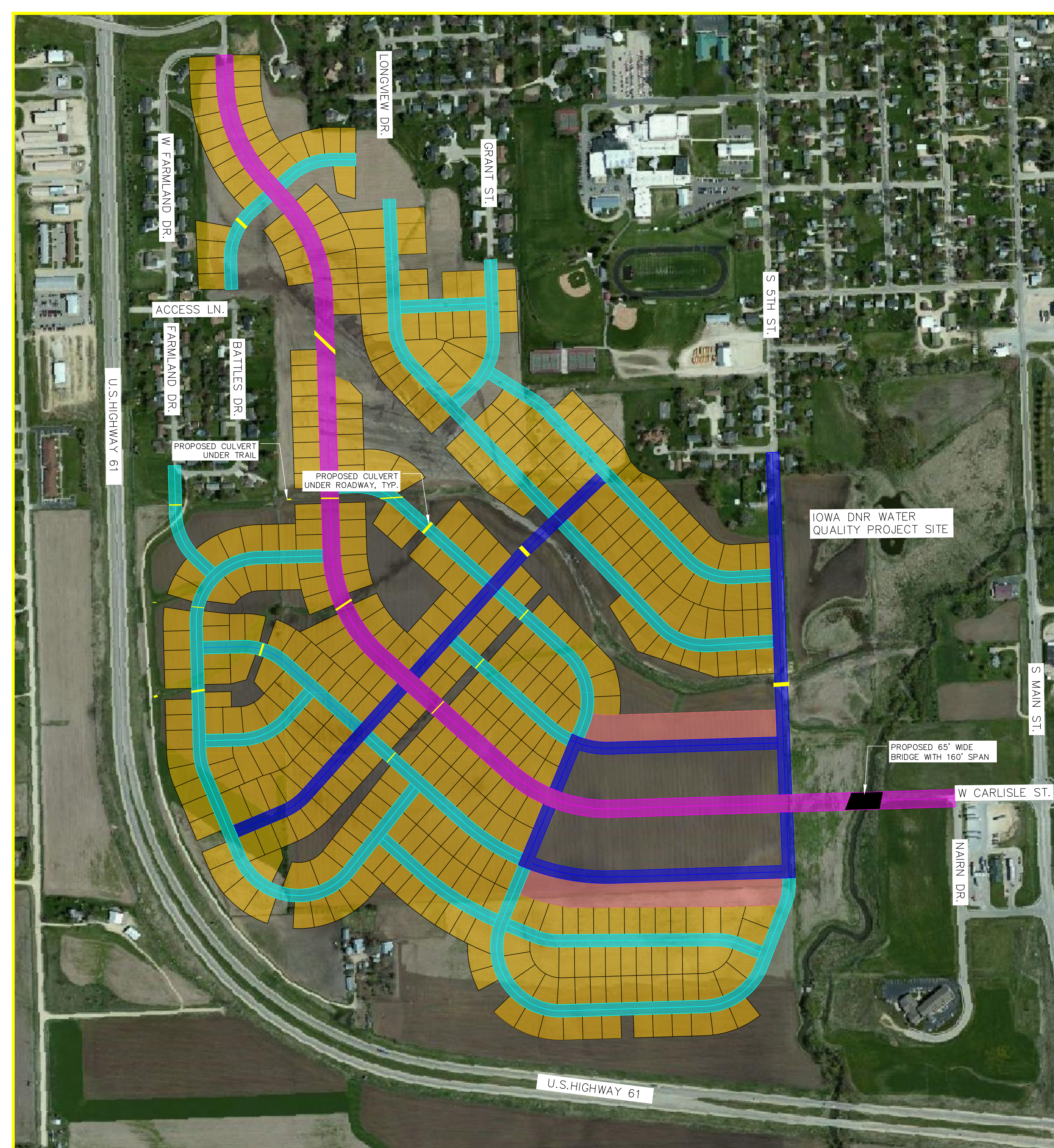
EDUCATIONAL - NOT FOR CONSTRUCTION

**SW Maquoketa Land Use Plan**  
 MAQUOKETA IOWA

SHEET NAME  
 SITE OVERVIEW

SHEET NO.  
**C101**

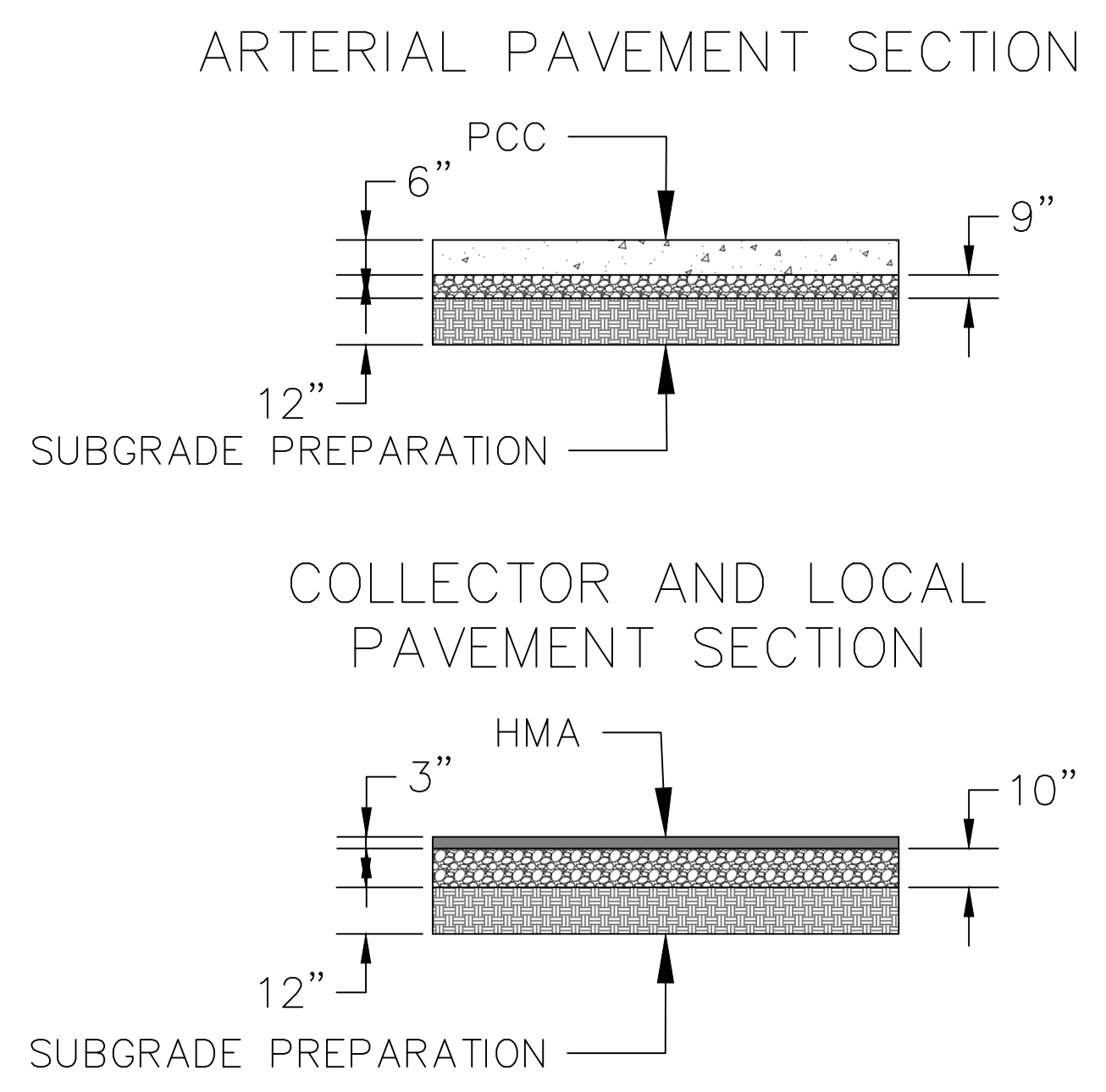




- ARTERIAL ROAD ROW
- COLLECTOR ROAD ROW
- LOCAL ROAD ROW

STREET CROSS-SECTIONS ARE DEPICTED ON C103 & C104

ROAD CLASSIFICATION	LENGTH (LF)	LENGTH (MILE)
ARTERIAL	6597	1.2
COLLECTOR	7667	1.5
LOCAL	20755	3.9
<b>TOTAL</b>	<b>35019</b>	<b>6.6</b>



PROJECT:	CEE: 4850
DATE :	05/06/2022
DRAWN BY:	NCR
REVISION:	

**THE UNIVERSITY OF IOWA**  
**CIVIL AND ENVIRONMENTAL ENGINEERING**  
 4105 SEAMANS CENTER FOR THE  
 ENGINEERING ARTS AND SCIENCES  
 103 S CAPITOL ST  
 IOWA CITY, IOWA 52242  
 PHONE: 319.335.5647  
 FAX: 319.335.5660  
 EMAIL: civil-hawks@iowag.edu



EDUCATIONAL - NOT FOR CONSTRUCTION

**SW Maquoketa Land Use Plan**  
 MAQUOKETA IOWA

SHEET NAME  
 STREET LAYOUT

SHEET NO.  
**C102**



PROJECT:	CEE: 4850
DATE :	05/06/2022
DRAWN BY:	NCR
REVISION:	

**THE UNIVERSITY OF IOWA**  
**CIVIL AND ENVIRONMENTAL ENGINEERING**  
 4105 SEAMANS CENTER FOR THE  
 ENGINEERING ARTS AND SCIENCES  
 103 S CAPITOL ST  
 IOWA CITY, IOWA 52242  
 PHONE: 319.335.5647  
 FAX: 319.335.5660  
 EMAIL: [civil-hawks@iowa.edu](mailto:civil-hawks@iowa.edu)



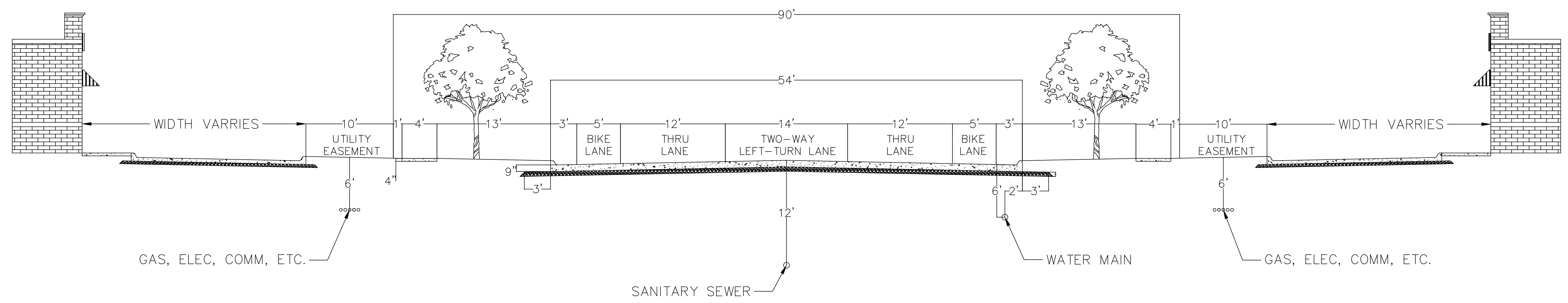
EDUCATIONAL - NOT FOR CONSTRUCTION

**SW Maquoketa Land Use**  
**Plan**  
 MAQUOKETA IOWA

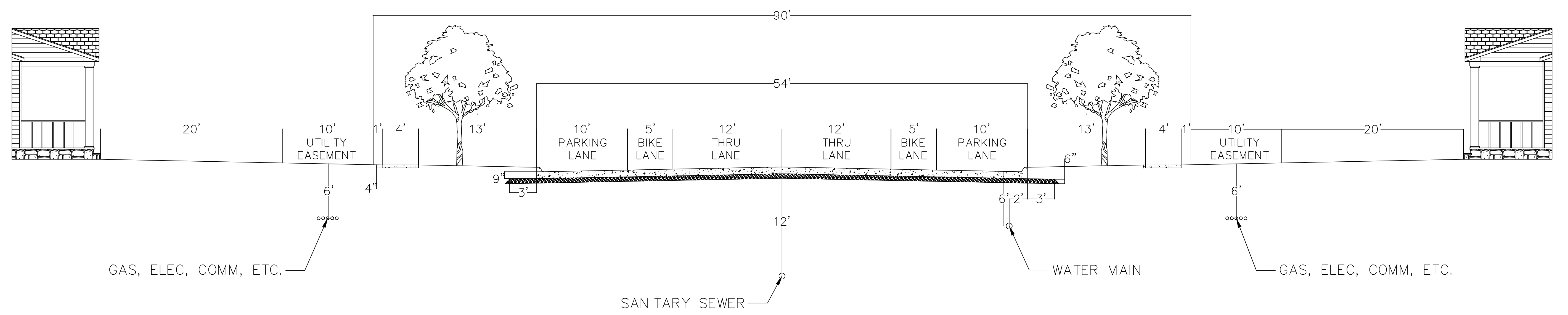
SHEET NAME  
 STREET LAYOUT

SHEET NO.  
**C103**

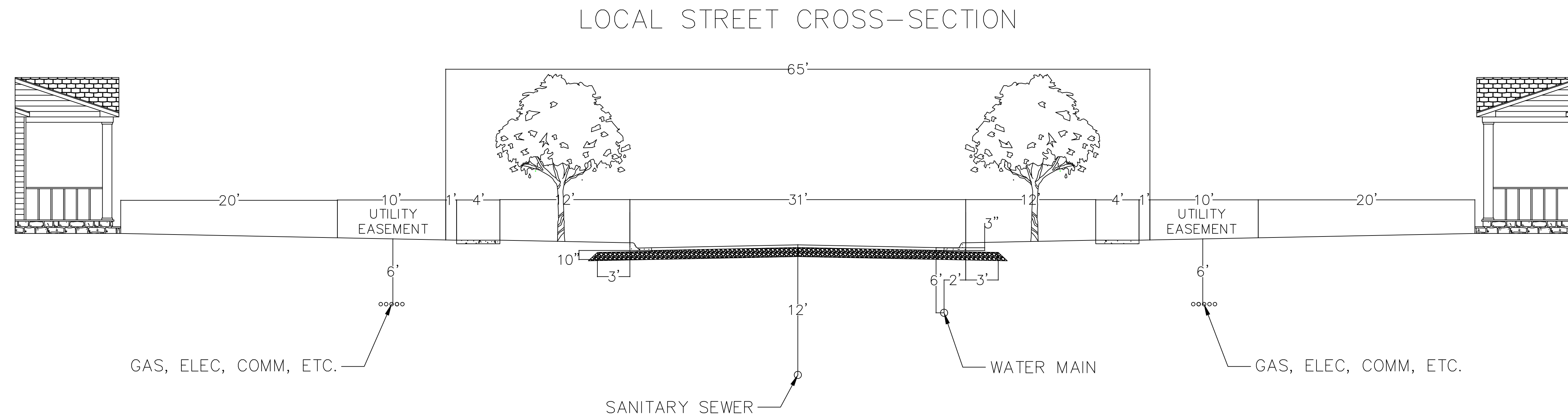
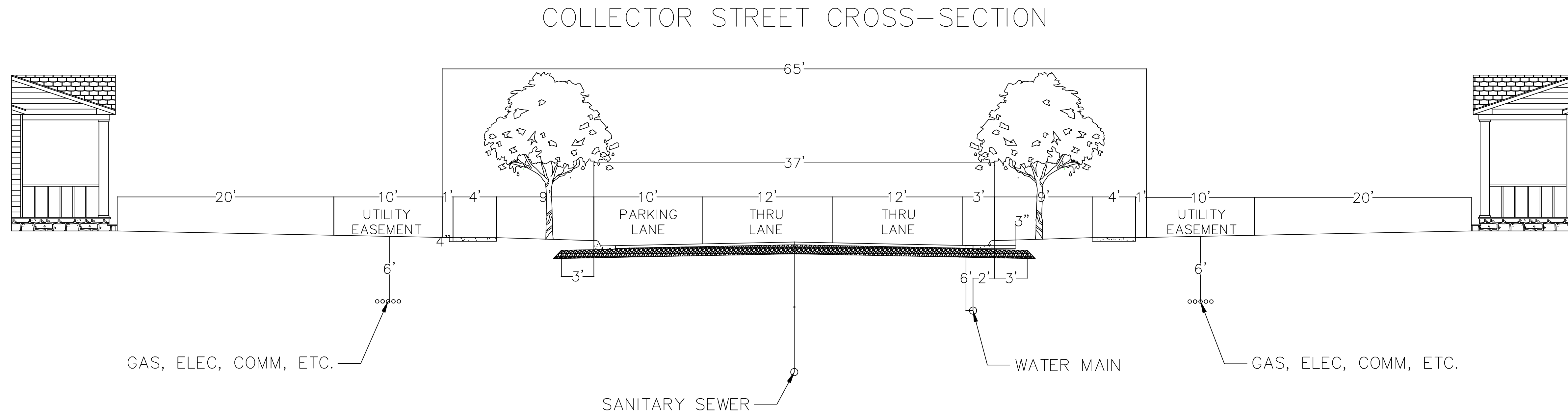
### ARTERIAL STREET CROSS-SECTION COMMERCIAL AREA



### ARTERIAL STREET CROSS-SECTION RESIDENTIAL AREA







PROJECT:	CEE: 4850
DATE :	05/06/2022
DRAWN BY:	NCR
REVISION:	

**THE UNIVERSITY OF IOWA**  
**CIVIL AND ENVIRONMENTAL ENGINEERING**  
 4105 SEAMANS CENTER FOR THE  
 ENGINEERING ARTS AND SCIENCES  
 103 S CAPITOL ST  
 IOWA CITY, IOWA 52242  
 PHONE: 319.335.5647  
 FAX: 319.335.5660  
 EMAIL: [civil-hawks@iowag.edu](mailto:civil-hawks@iowag.edu)



EDUCATIONAL - NOT FOR CONSTRUCTION

**SW Maquoketa Land Use Plan**  
 MAQUOKETA IOWA

SHEET NAME  
 STREET CROSS-SECTIONS CONT.

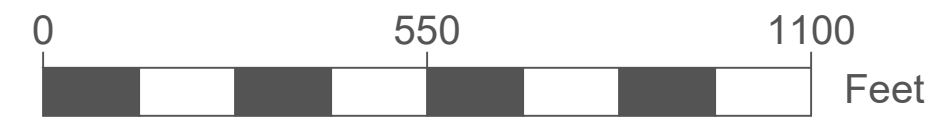
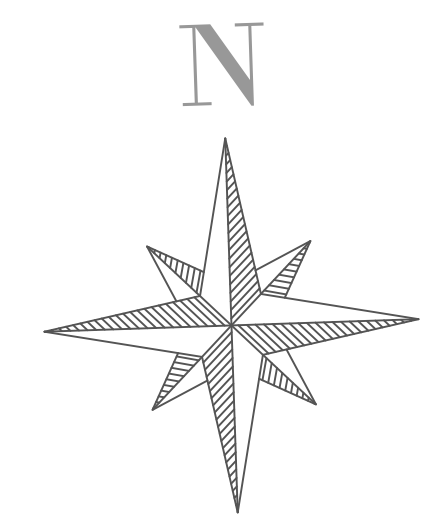
SHEET NO.  
**C104**





LOCATION OF OFF-SITE  
STORM WATER STORAGE.  
STORAGE: 9.38 ACRE-FT

IOWA DNR WATER  
QUALITY PROJECT SITE



DRAINAGE WAY

CULVERT

**1 CULVERT INFORMATION**

CULVERT	DESCRIPTION	CULVERT LENGTH (FT)	CHANNEL TYPE	BOTTOM WIDTH (FT)	SIDE SLOPE (X H:1 V)	CHANNEL DEPTH (FT)	EMBANKMENT HEIGHT ABOVE CULVERT INVERT (FT)
1	DOUBLE 8' W x 5' H BOX	65	TRAPEZOIDAL	8	4	8.5	11.80
2	DOUBLE 8' W x 5.5' H BOX	145	TRAPEZOIDAL	8	4	9.0	12.20
3	DOUBLE 10' W x 10' H BOX	65	TRAPEZOIDAL	8	4	12.5	14.50
4	DOUBLE 10' W x 10' H BOX	85	TRAPEZOIDAL	8	4	13.0	15.50
5	60" DIAMETER	60	TRIANGULAR	0	3	5.0	7.10
6	66" DIAMETER	90	TRIANGULAR	0	3	5.0	7.20
7	30' DIAMETER	65	TRIANGULAR	0	3	2.0	4.70
8	DOUBLE 5' W x 6' H BOX	95	TRIANGULAR	0	3	6.5	9.50
9	DOUBLE 6' W x 6' H BOX	65	TRIANGULAR	0	3	6.0	8.60
10	DOUBLE 5' W x 5.5' H BOX	65	TRIANGULAR	0	3	6.0	8.00
11	DOUBLE 5' W x 6' H BOX	65	TRIANGULAR	0	3	5.0	8.50
12	54" DIAMETER	65	TRIANGULAR	0	3	4.0	6.60
13	60" DIAMETER	95	TRIANGULAR	0	3	5.0	7.30
14	5.5' W x 5' H BOX	70	TRIANGULAR	0	3	5.0	7.30
15	6' W x 5' H BOX	65	TRIANGULAR	0	3	5.0	7.60
16	DOUBLE 5' W x 5.5' H BOX	20	TRIANGULAR	0	3	6.0	8.00
17	30" DIAMETER	20	TRIANGULAR	0	3	2.0	4.70
18	66" DIAMETER	20	TRIANGULAR	0	3	5.0	7.20
19	54" DIAMETER	140	TRIANGULAR	0	3	5.0	7.40

NOTE:  
FOR HOUSES PROPOSED UPSTREAM FROM CULVERTS, KEEP LOW OPENING TO 1' ABOVE THE EMBANKMENT HEIGHT ABOVE CULVERT INVERT

NOTE:  
THE CHANNEL CORRESPONDING TO A SPECIFIC CULVERT IS THE CHANNEL UPSTREAM OF THE CULVERT (CHANNEL 1 IS THE CHANNEL UPSTREAM OF CULVERT 1)

PROJECT: CEE: 4850  
DATE: 05/06/2022  
DRAWN BY: NCR  
REVISION:

**THE UNIVERSITY OF IOWA**  
**CIVIL AND ENVIRONMENTAL ENGINEERING**  
4105 SEAMANS CENTER FOR THE  
ENGINEERING ARTS AND SCIENCES  
103 S CAPITOL ST  
IOWA CITY, IOWA 52242  
PHONE: 319.335.5647  
FAX: 319.335.5660  
EMAIL: civil-hawks@iowag.edu



EDUCATIONAL - NOT FOR CONSTRUCTION

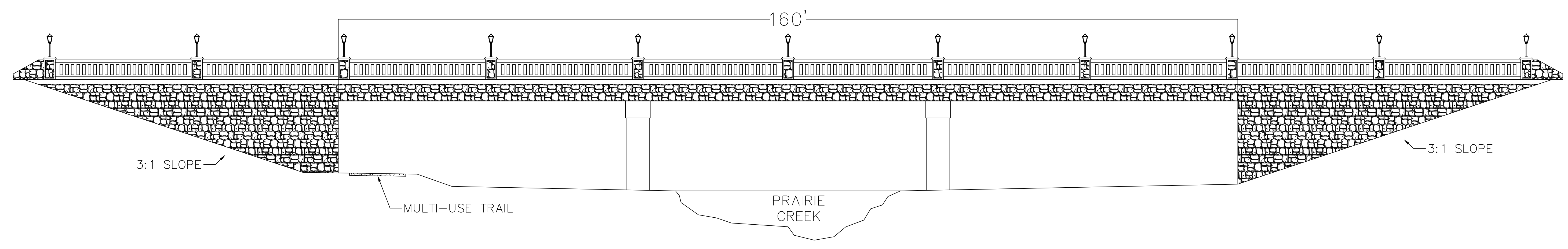
**SW Maquoketa Land Use Plan**  
MAQUOKETA IOWA

SHEET NAME  
STORMWATER MANAGEMENT

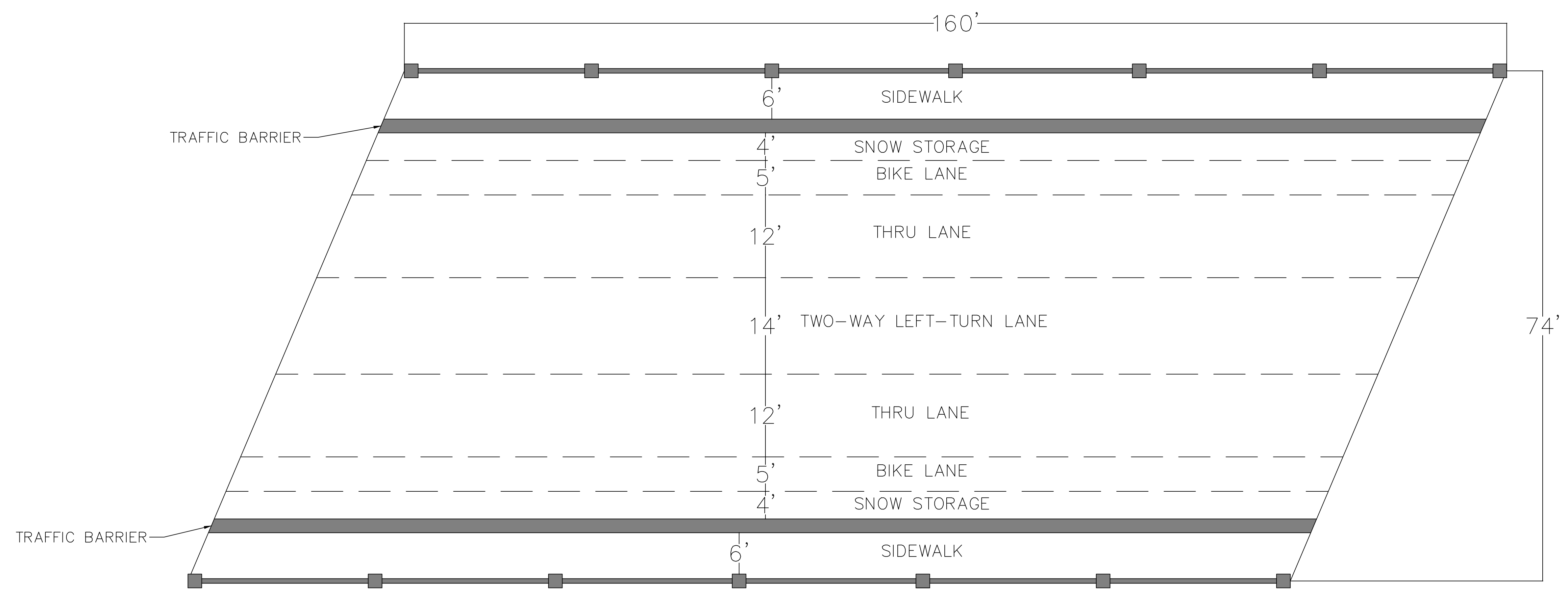
SHEET NO.  
**C105**



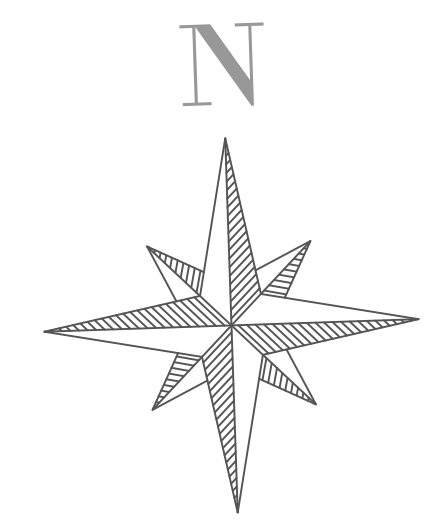
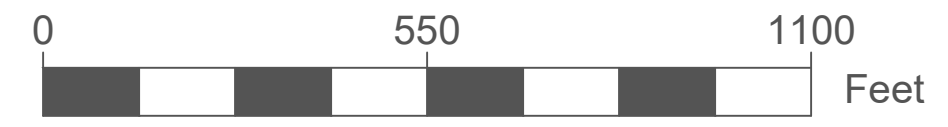
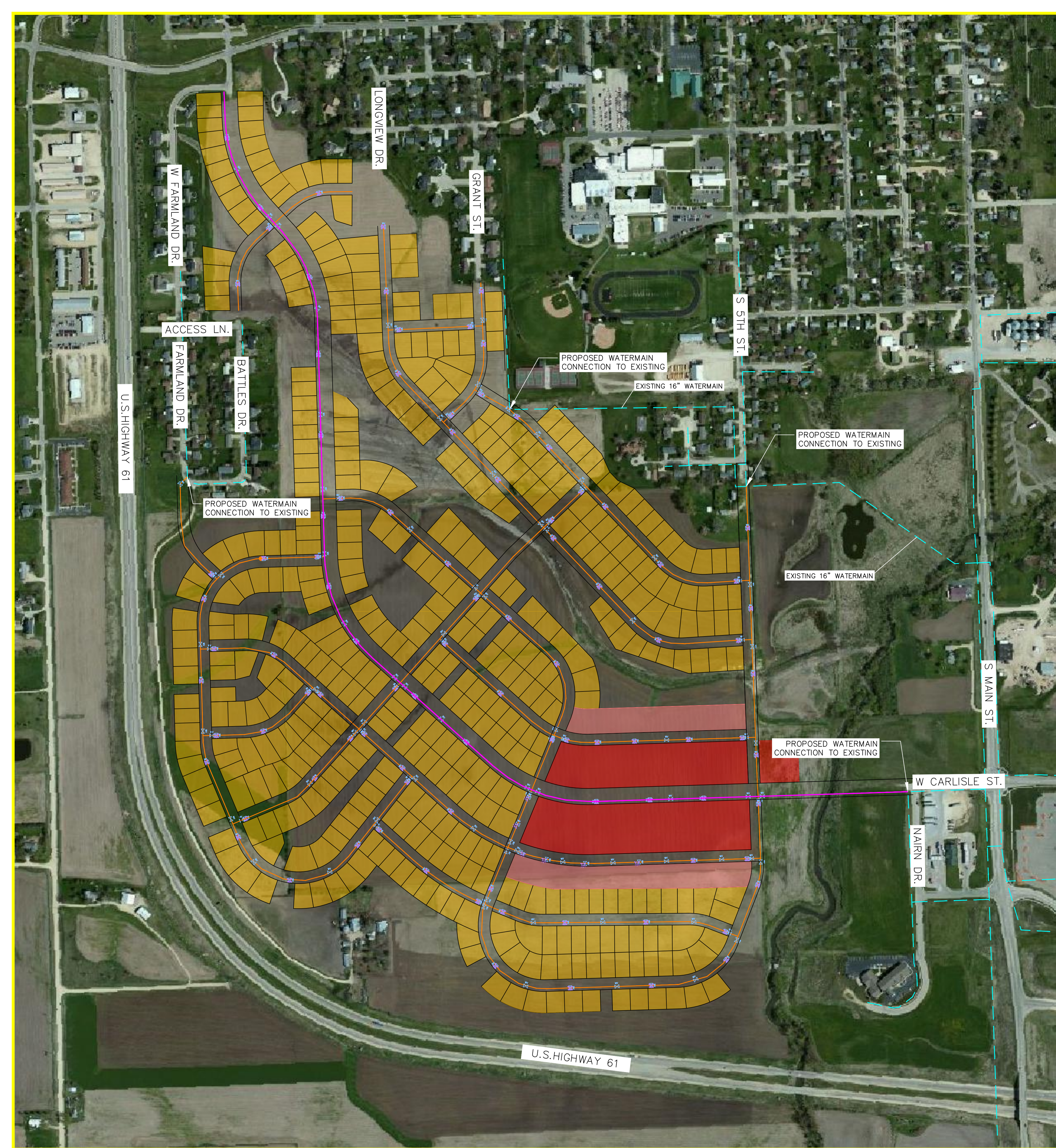
ARTERIAL STREET PRAIRIE CREEK BRIDGE CROSSING



ARTERIAL STREET PRAIRIE CREEK BRIDGE CROSSING PLAN VIEW







- EXISTING WATERMAIN
- PROPOSED 8" WATERMAIN
- PROPOSED 12" WATERMAIN
- WV PROPOSED WATERMAIN VALVE
- ☀ PROPOSED HYDRANT

WATER MAIN QUANTITIES	
NUMBER OF HYDRANTS	101
NUMBER OF VALVES	199
LENGTH OF 12" PIPE (LF)	6597
LENGTH OF 8" PIPE (LF)	28422

PROJECT:	CEE: 4850
DATE :	05/06/2022
DRAWN BY:	NCR
REVISION:	

**THE UNIVERSITY OF IOWA**  
**CIVIL AND ENVIRONMENTAL ENGINEERING**  
 4105 SEAMANS CENTER FOR THE  
 ENGINEERING ARTS AND SCIENCES  
 103 S CAPITOL ST  
 IOWA CITY, IOWA 52242  
 PHONE: 319.335.5647  
 FAX: 319.335.5660  
 EMAIL: civil-hawks@iowag.edu



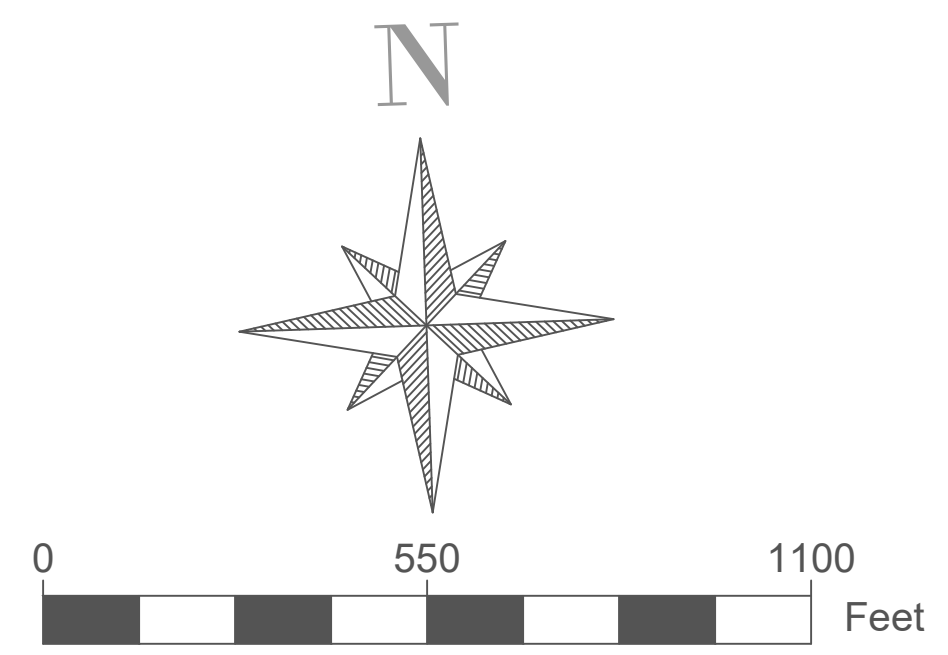
EDUCATIONAL - NOT FOR CONSTRUCTION

**SW Maquoketa Land Use Plan**  
 MAQUOKETA IOWA

SHEET NAME  
 WATERMAIN

SHEET NO.  
**C107**





- - - EXISTING SANITARY SEWER LINE
- PROPOSED 8" SANITARY SEWER LINE
- PROPOSED 10" SANITARY SEWER LINE
- Ⓢ EXISTING SANITARY SEWER MANHOLE
- Ⓢ PROPOSED SANITARY SEWER MANHOLE

SANITARY SEWER QUANTITIES	
LENGTH OF 8" PIPE (LF)	29813
LENGTH OF 12" PIPE (LF)	3202
NUMBER OF MANHOLES	140

PROJECT: CEE: 4850  
 DATE: 05/06/2022  
 DRAWN BY: NCR  
 REVISION:

**THE UNIVERSITY OF IOWA**  
**CIVIL AND ENVIRONMENTAL ENGINEERING**  
 4105 SEAMANS CENTER FOR THE  
 ENGINEERING ARTS AND SCIENCES  
 103 S CAPITOL ST  
 IOWA CITY, IOWA 52242  
 PHONE: 319.335.5647  
 FAX: 319.335.5660  
 EMAIL: civil-hawks@iowa.edu



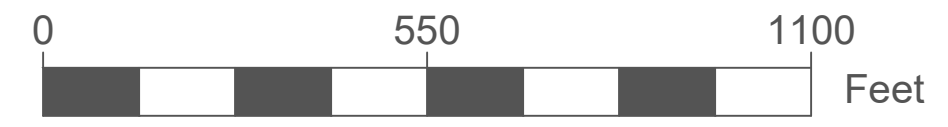
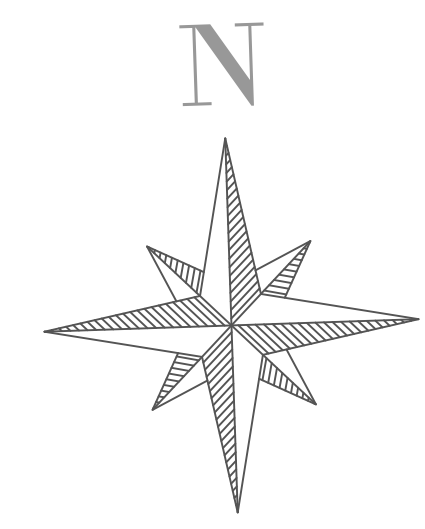
EDUCATIONAL - NOT FOR CONSTRUCTION

**SW Maquoketa Land Use Plan**  
 MAQUOKETA IOWA

SHEET NAME  
 SANITARY SEWER

SHEET NO.  
**C108**





 MULTI-USE PCC TRAIL WITH 5" DEPTH

 MULTI-USE PCC TRAIL WITH 7" DEPTH

 MULTI-USE PCC TRAIL WITH 5" DEPTH ON PROPERTY OF MAQUOKETA HIGH SCHOOL

 DECIDUOUS TREE

 CONIFEROUS TREE

PCC TRAIL QUANTITIES	
AREA OF 5" PCC (SF)	136890
AREA OF 7" PCC (SF)	31878

PROJECT:	CEE: 4850
DATE :	05/06/2022
DRAWN BY:	NCR
REVISION:	

**THE UNIVERSITY OF IOWA**  
**CIVIL AND ENVIRONMENTAL ENGINEERING**  
 4105 SEAMANS CENTER FOR THE  
 ENGINEERING ARTS AND SCIENCES  
 103 S CAPITOL ST  
 IOWA CITY, IOWA 52242  
 PHONE: 319.335.5647  
 FAX: 319.335.5660  
 EMAIL: civil-hawks@iowa.edu



EDUCATIONAL - NOT FOR CONSTRUCTION

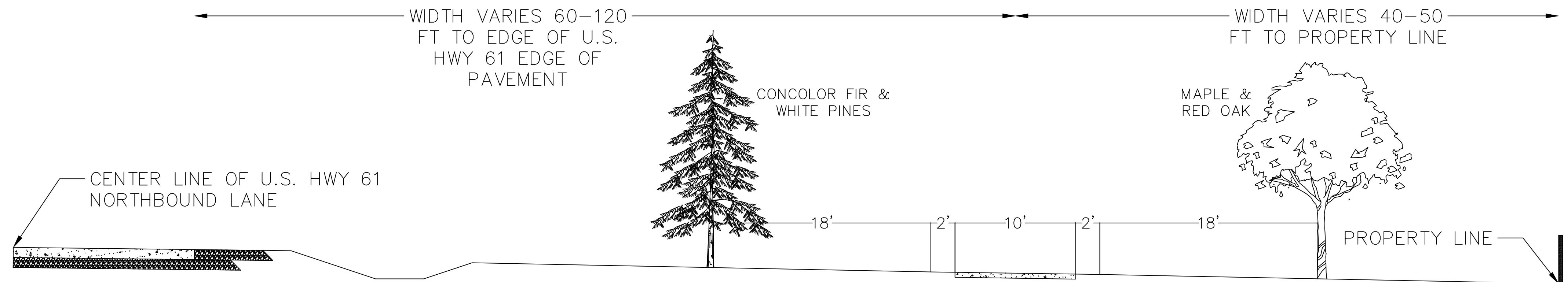
**SW Maquoketa Land Use**  
**Plan**  
 MAQUOKETA IOWA

SHEET NAME  
 TRAIL & GREENSPACE

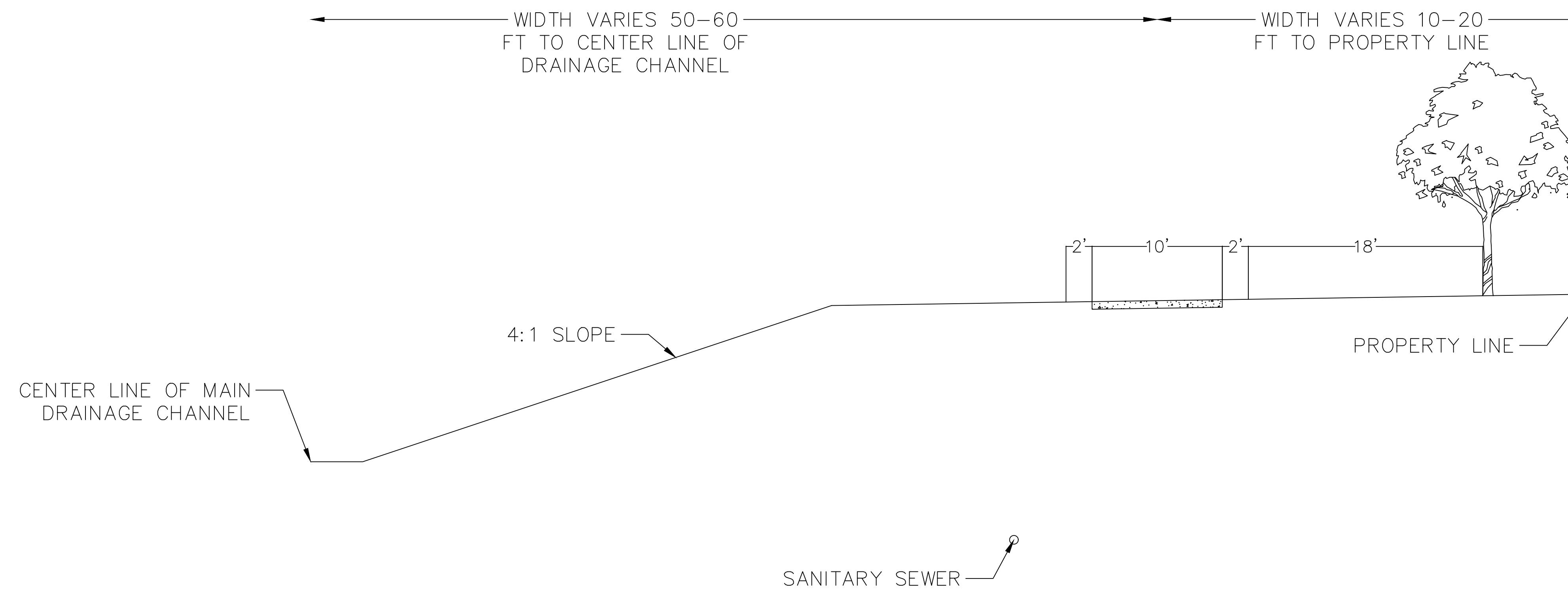
SHEET NO.  
**C109**



## MULTI-USE TRAIL AND NATURAL BUFFER ALONG U.S. HWY 61



## MULTI-USE TRAIL ALONG MAIN DRAINAGE CHANNEL



PROJECT:	CEE: 4850
DATE :	05/06/2022
DRAWN BY:	NCR
REVISION:	

**THE UNIVERSITY OF IOWA**  
**CIVIL AND ENVIRONMENTAL ENGINEERING**  
 4105 SEAMANS CENTER FOR THE  
 ENGINEERING ARTS AND SCIENCES  
 103 S CAPITOL ST  
 IOWA CITY, IOWA 52242  
 PHONE: 319.335.5647  
 FAX: 319.335.5660  
 EMAIL: civil-hawks@iowa.edu

**IOWA**  
 CIVIL & ENVIRONMENTAL  
 ENGINEERING

EDUCATIONAL - NOT  
 FOR CONSTRUCTION

**SW Maquoketa Land Use  
 Plan**  
 MAQUOKETA IOWA

SHEET NAME

TRAIL CROSS-  
 SECTION

SHEET NO.

**C110**