

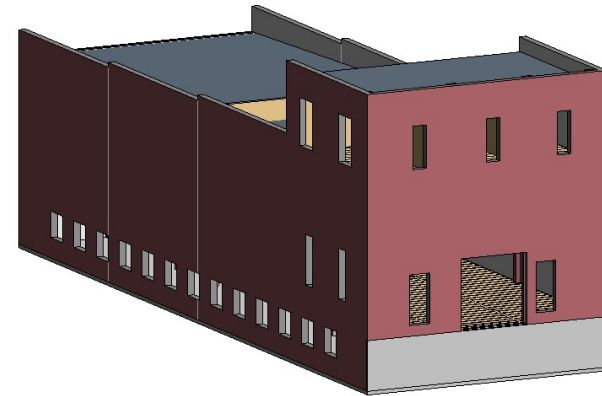
# Historic Rehabilitation Schmidt Building

The University of Iowa  
Iowa City, IA



## Index of Drawings

- S1. Cover Sheet
- S2. Foundation and First Floor Plans
- S3. Second Floor and Roof Plans
- S4. Elevation Views
- S5. Section Views
- S6. Roof Section View
- S7. Steel Bracing Plan
- S8. Brick Tie Locations
- S9. Base Plate
- S10. Detail Drawings
- S11. Detail Drawings cont.
- S12. Architectural Layout
- S13. Dead Load Diagrams
- S14. Live Load Diagrams
- S15. Snow Load Diagrams
- S16. Wind Load Diagrams



|           |          |
|-----------|----------|
| PROJECT:  | CEE 3004 |
| DATE:     | 4/5/2019 |
| DRAWN BY: | TYW      |
| REVISION: | 1        |

THE UNIVERSITY OF IOWA  
CIVIL AND ENVIRONMENTAL ENGINEERING  
405 ENGINEERING AVENUE  
103 S CAPITOL ST  
IOWA CITY, IOWA 52242  
PHONE: 319.335.9600  
FAX: 319.335.9600  
EMAIL: cveil-haw@iowa.edu



EDUCATIONAL - NOT FOR CONSTRUCTION

Historic Rehabilitation

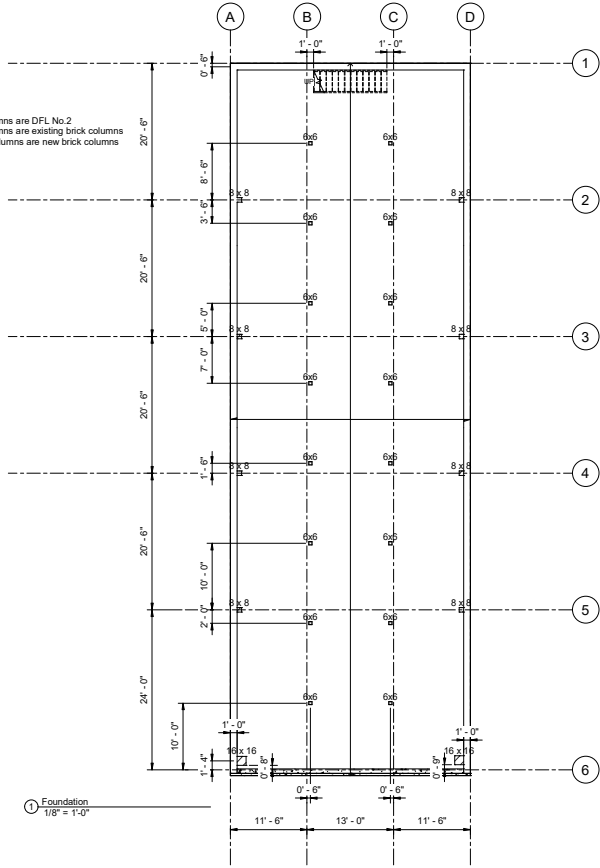
500 Main Street  
Manning, IA 51455

SHEET NAME  
Title Sheet

SHEET NO.  
**S1**

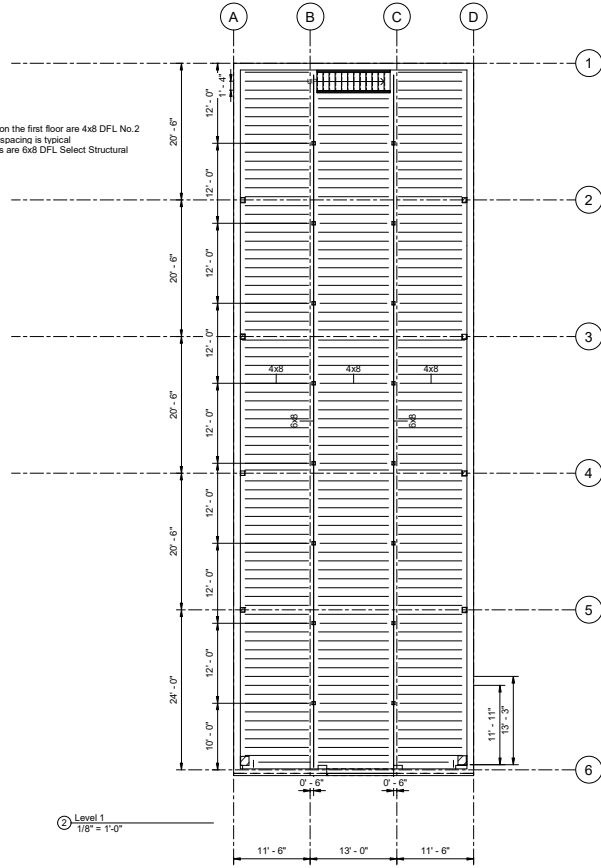


6x6 columns are DFL No.2  
 8x8 columns are existing brick columns  
 16x16 columns are new brick columns



① Foundation  
 1/8" = 1'-0"

Notes:  
 All joists on the first floor are 4x8 DFL No.2  
 16" O.C. spacing is typical  
 All girders are 6x8 DFL Select Structural



② Level 1  
 1/8" = 1'-0"

|           |          |
|-----------|----------|
| PROJECT:  | CEE 4860 |
| DATE:     | 4/5/2019 |
| DRAWN BY: | TY       |
| REVISION: | 1        |

**THE UNIVERSITY OF IOWA**  
**CIVIL AND ENVIRONMENTAL ENGINEERING**  
 103 SEAWANS CENTER FOR THE  
 ENGINEERING ARTS 103 S CAPITOL ST  
 IOWA CITY, IOWA 52242  
 PHONE: 319.335.9697  
 EMAIL: cvt-harves@iowa.edu



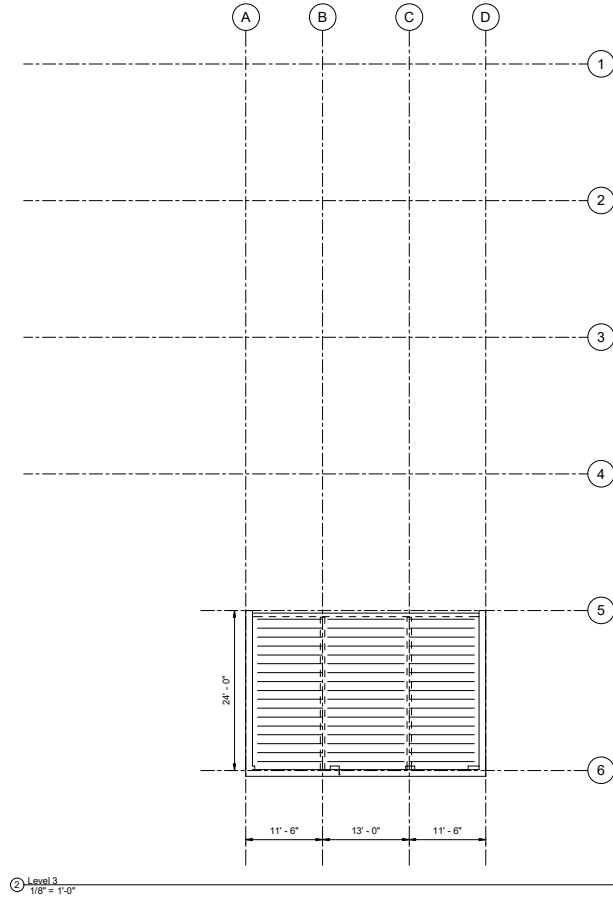
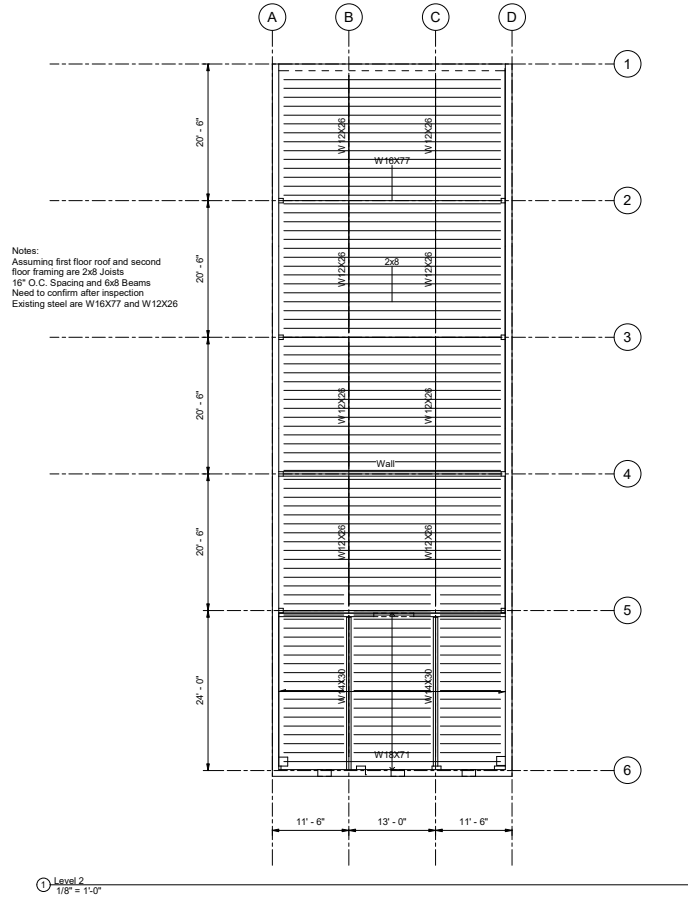
EDUCATIONAL - NOT  
 FOR CONSTRUCTION

## Historic Rehabilitation

590 Main Street  
 Manning, IA 51455

SHEET NAME  
 Floor Plans

SHEET NO.  
**S2**



|           |          |
|-----------|----------|
| PROJECT:  | CEE-4860 |
| DATE:     | 4/5/2019 |
| DRAWN BY: | TYW      |
| REVISION: | 1        |

**THE UNIVERSITY OF IOWA**  
**CIVIL AND ENVIRONMENTAL ENGINEERING**  
 IOWA CITY, IOWA 52242  
 103 S. CAPITOL ST.  
 PHONES: 319.335.5260  
 FAX: 319.335.5860  
 EMAIL: [civil-hawk@uiowa.edu](mailto:civil-hawk@uiowa.edu)



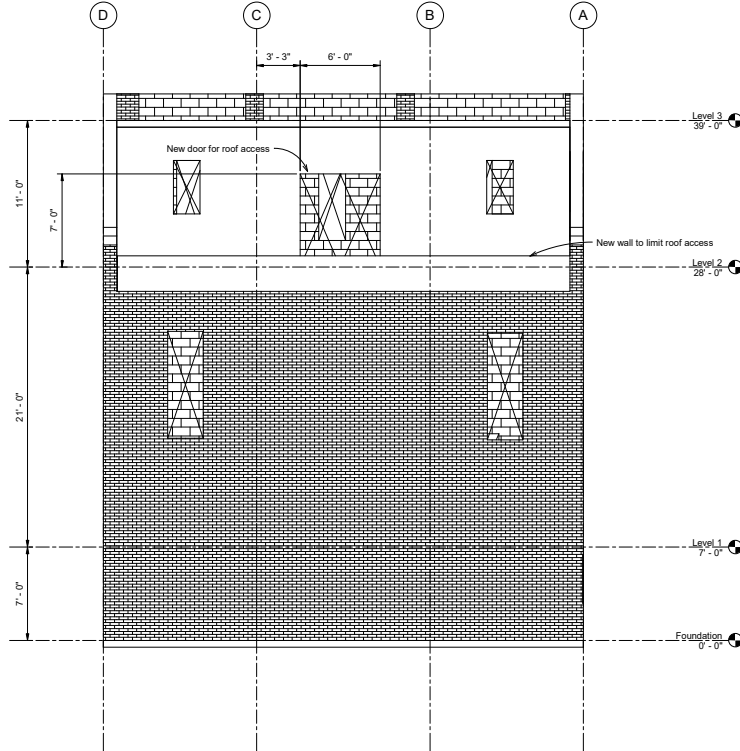
EDUCATIONAL - NOT FOR CONSTRUCTION

**Historic Rehabilitation**

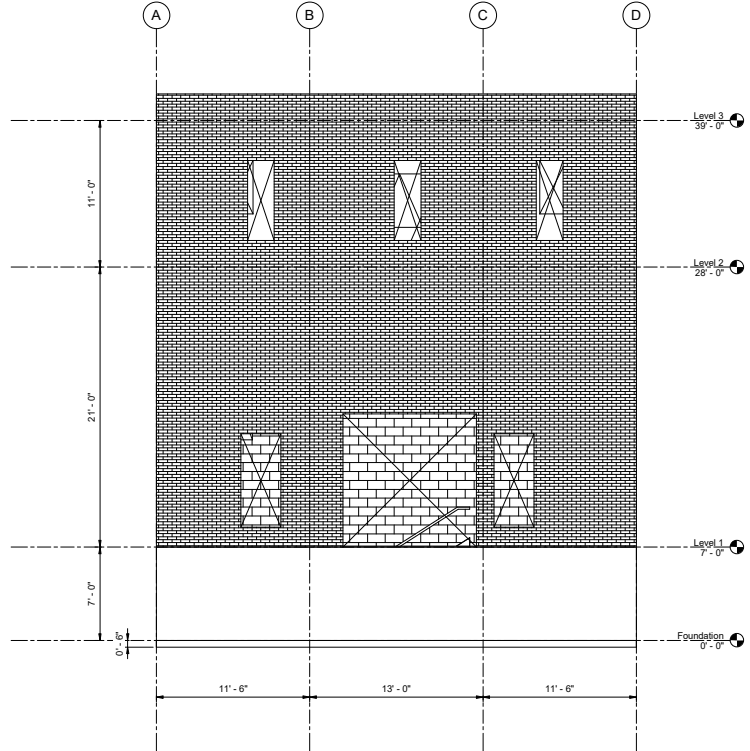
590 Main Street  
 Manning, IA 51455

SHEET NAME  
 Second Floor and Roof Floor Plans

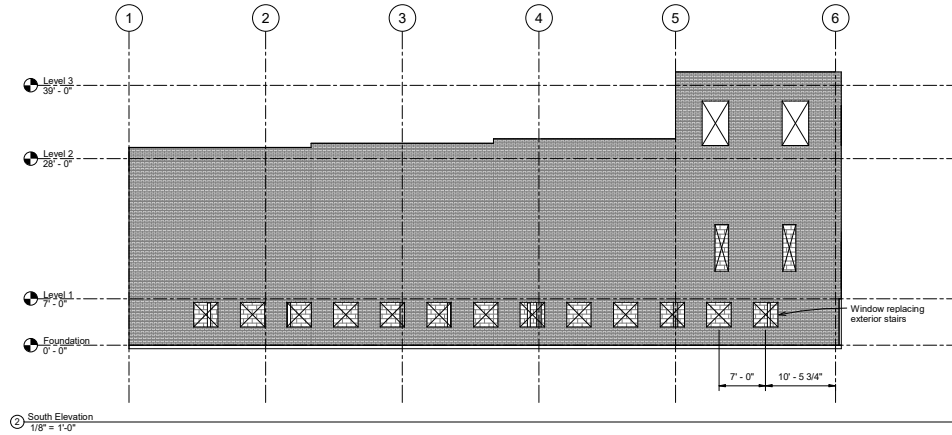
SHEET NO.  
**S3**



③ West Elevation  
1/4" = 1'-0"



① East Elevation  
1/4" = 1'-0"



② South Elevation  
1/8" = 1'-0"

|              |          |
|--------------|----------|
| PROJECT:     | CEE-4869 |
| DATE:        | 4/5/2019 |
| DESIGNED BY: | ITW      |
| DRAWN BY:    | ITW      |
| REVISION:    | 1        |

THE UNIVERSITY OF IOWA  
**CIVIL AND ENVIRONMENTAL ENGINEERING**  
 103 ENGINEERING PARKS AND SCIENCES  
 103 S. CAPITOL ST.  
 IOWA CITY, IOWA 52242  
 PHONE: 319.335.3669  
 FAX: 319.335.9660  
 EMAIL: civil-hawk@iowa.edu



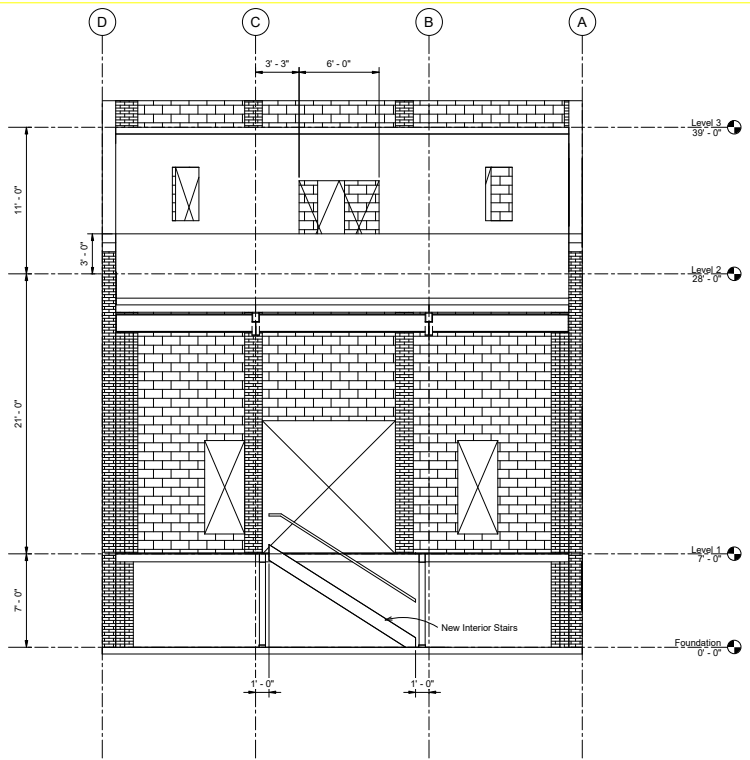
EDUCATIONAL - NOT FOR CONSTRUCTION

**Historic Rehabilitation**

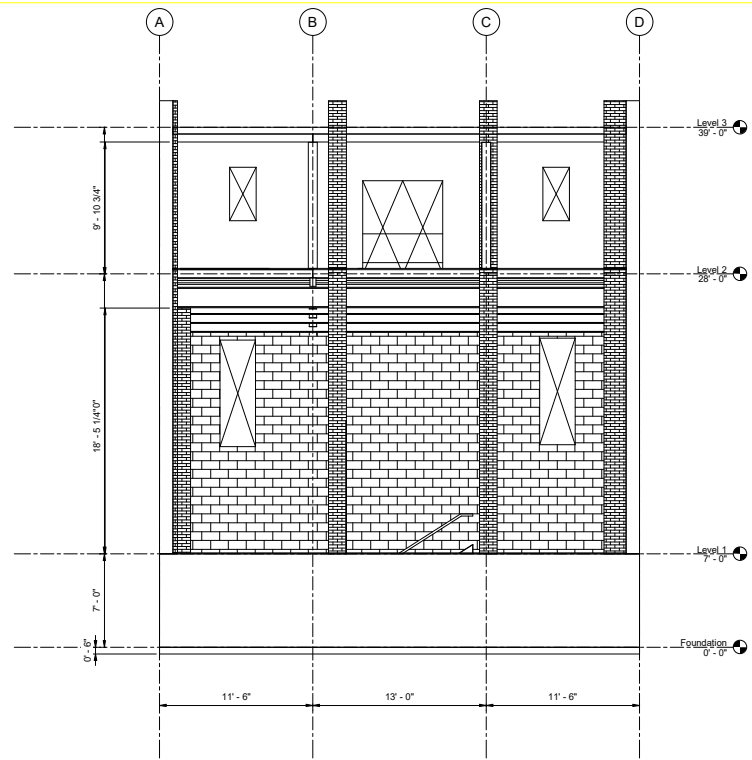
590 Main Street  
 Manning, IA 51455

SHEET NAME  
 Elevation Views

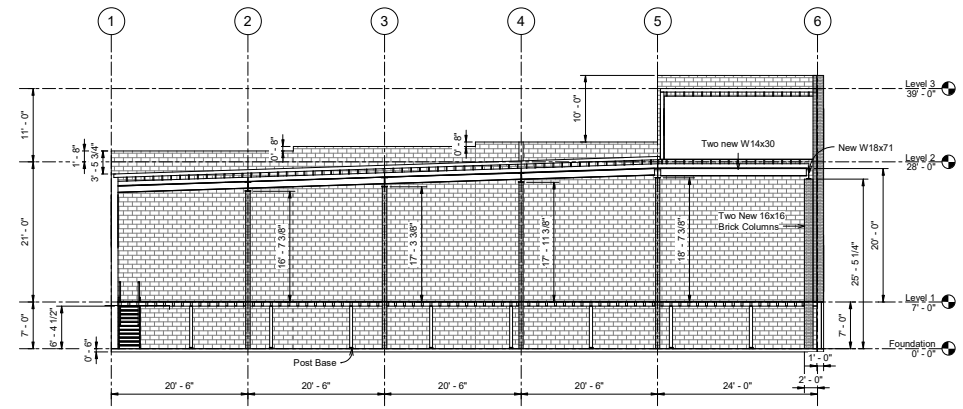
SHEET NO.  
**S4**



① West  
1/4" = 1'-0"



② East  
1/4" = 1'-0"



③ South  
1/8" = 1'-0"

|              |          |
|--------------|----------|
| PROJECT:     | CEE 4849 |
| DATE:        | 4/5/2019 |
| DESIGNED BY: | ITW      |
| REVISION:    | 1        |

THE UNIVERSITY OF IOWA  
**CIVIL AND ENVIRONMENTAL ENGINEERING**  
 ENGINEERING ADVISORY SERVICES  
 103 S. CAPITOL ST.  
 IOWA CITY, IOWA 52242  
 PHONE: 319.335.3669  
 FAX: 319.335.9660  
 EMAIL: civil-hawk@uiowa.edu



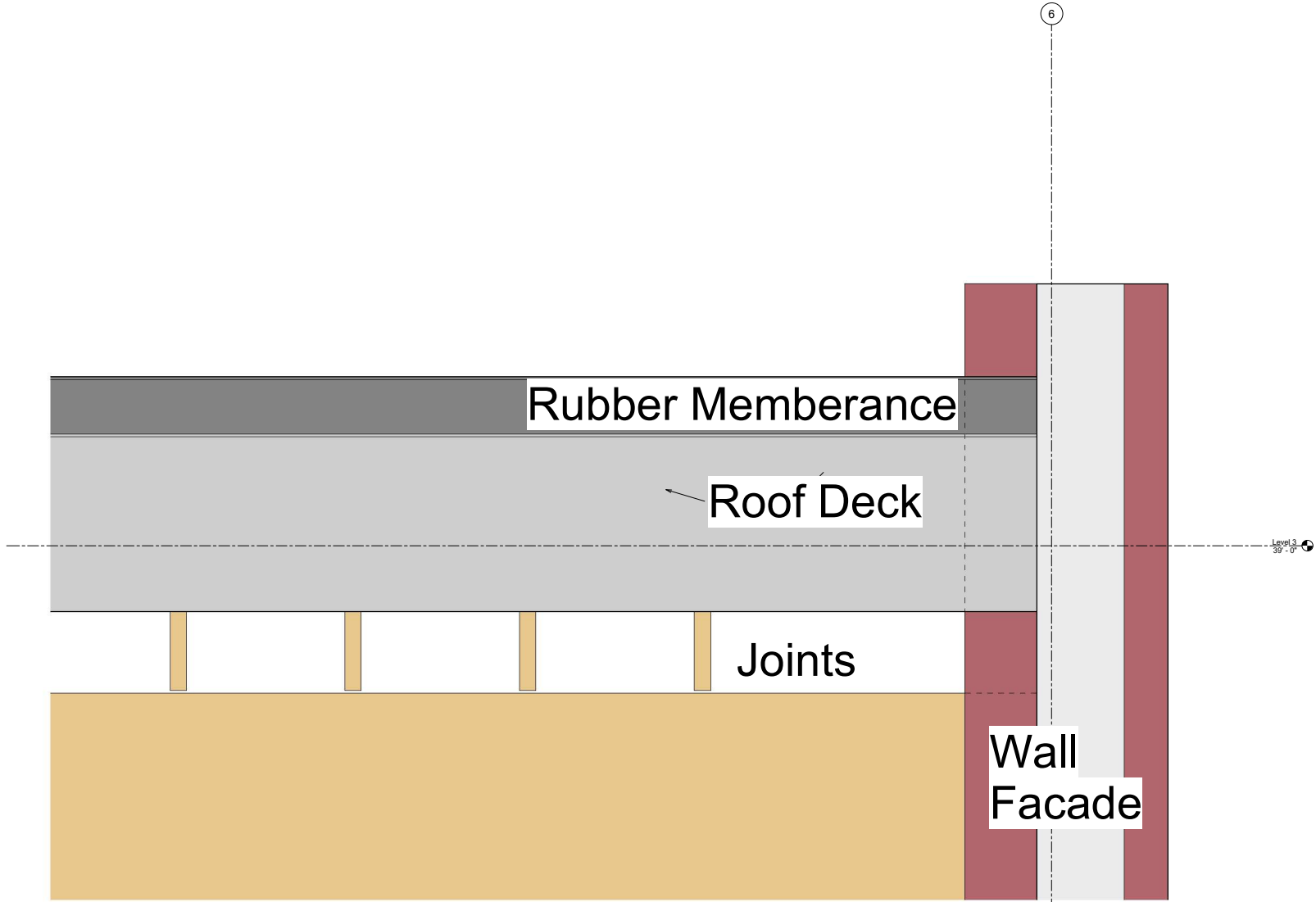
EDUCATIONAL - NOT FOR CONSTRUCTION

**Historic Rehabilitation**

590 Main Street  
 Manning, IA 51455

SHEET NAME  
 Section Views

SHEET NO.  
**S5**



**THE UNIVERSITY OF IOWA**  
**CIVIL AND ENVIRONMENTAL ENGINEERING**  
 100 ENGINEERING AVENUE AND SCIENCES CENTER  
 IOWA CITY, IOWA 52242  
 PH: 319.335.3669  
 FAX: 319.335.9690  
 EMAIL: civil-haw@iowa.edu

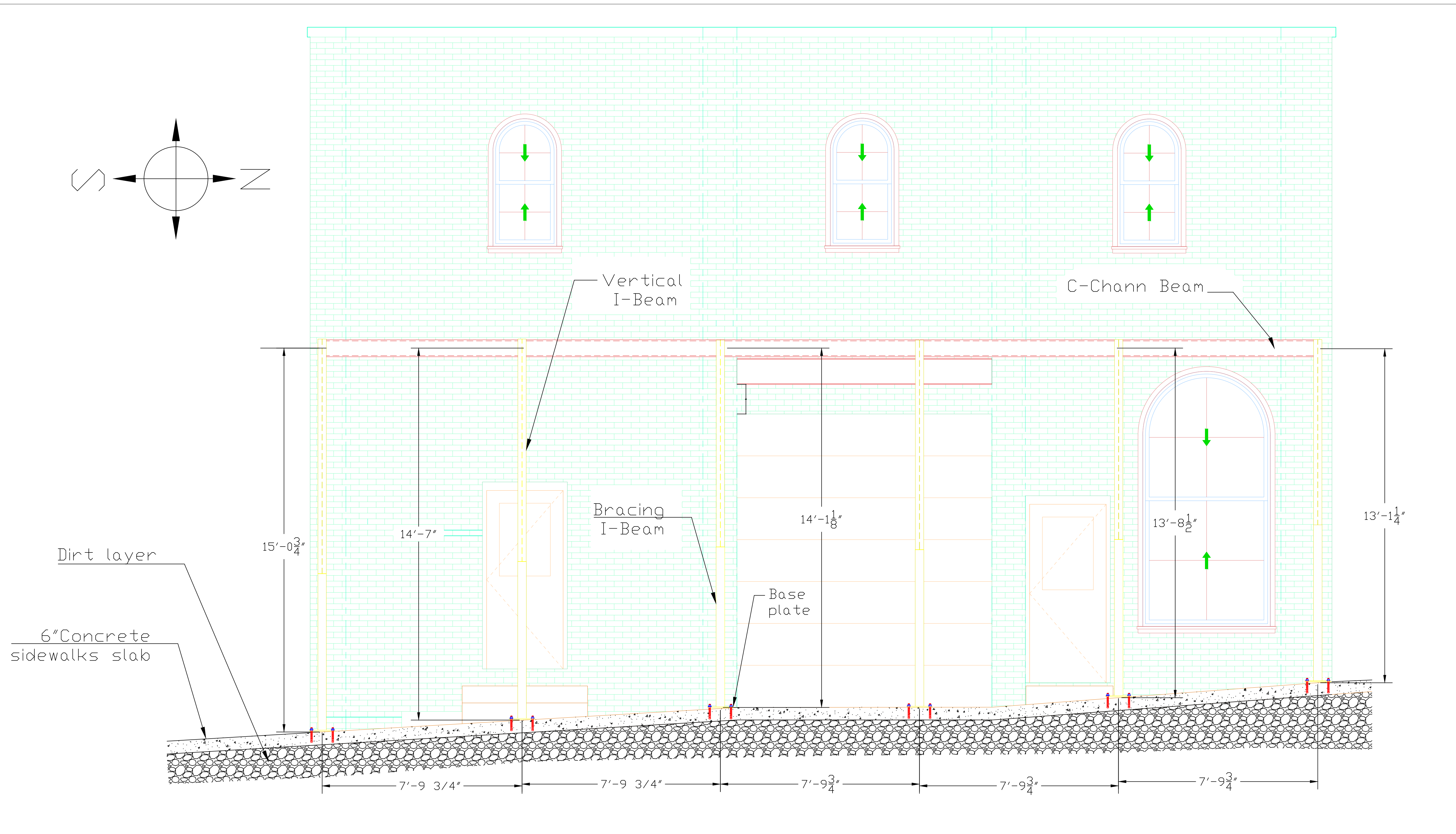
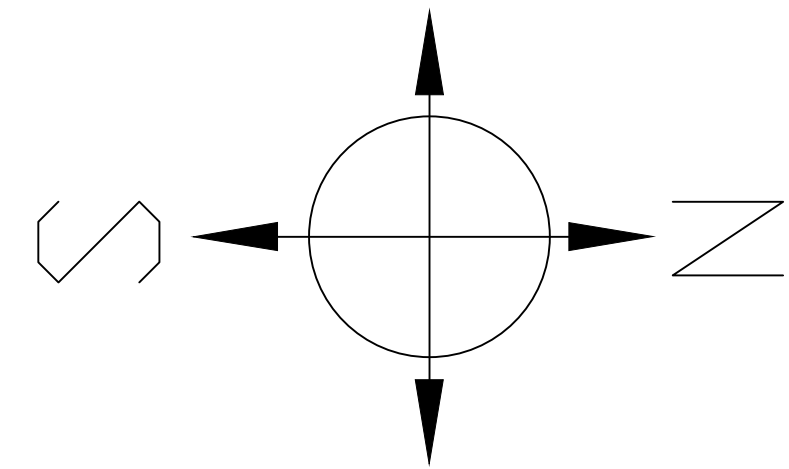
PROJECT: Historic Rehabilitation  
 DATE: 04/12/2018  
 DRAWN BY: TM  
 REVISION:

EDUCATIONAL - NOT FOR CONSTRUCTION

**Historic rehabilitation**  
 590 Main Street  
 Manning City, IA, 51455

SHEET NAME  
 Roof Structural

SHEET NO.  
**S6**



PROJECT: CEE-4850  
 DATE: 4/11/2019  
 DRAWN BY: Nowaf Sulttan  
 REVISION:

**THE UNIVERSITY OF IOWA**  
**CIVIL AND ENVIRONMENTAL ENGINEERING**  
 4105 SEAMANS CENTER FOR THE  
 ENGINEERING ARTS AND SCIENCES  
 103 S CAPITOL ST  
 IOWA CITY, IOWA 52242  
 PHONE: 319.335.5647  
 FAX: 319.335.5660  
 EMAIL: civil-hawks@uiowa.edu



EDUCATIONAL - NOT  
 FOR CONSTRUCTION

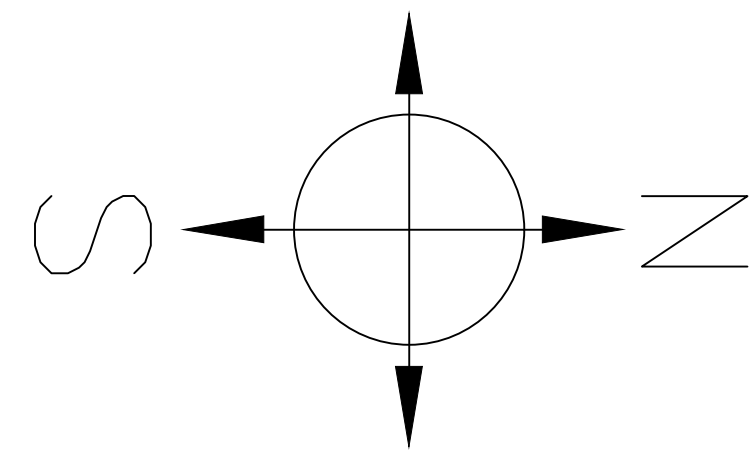
**Historic Rehabilitation**

590 Main Street  
 Manning, IA 51455

SHEET NAME  
 Front Elevation  
 of the Building

SHEET NO.  
**S7**





Recommended maximum allowable vertical distance

1'-6"

Recommended maximum allowable horizontal distance

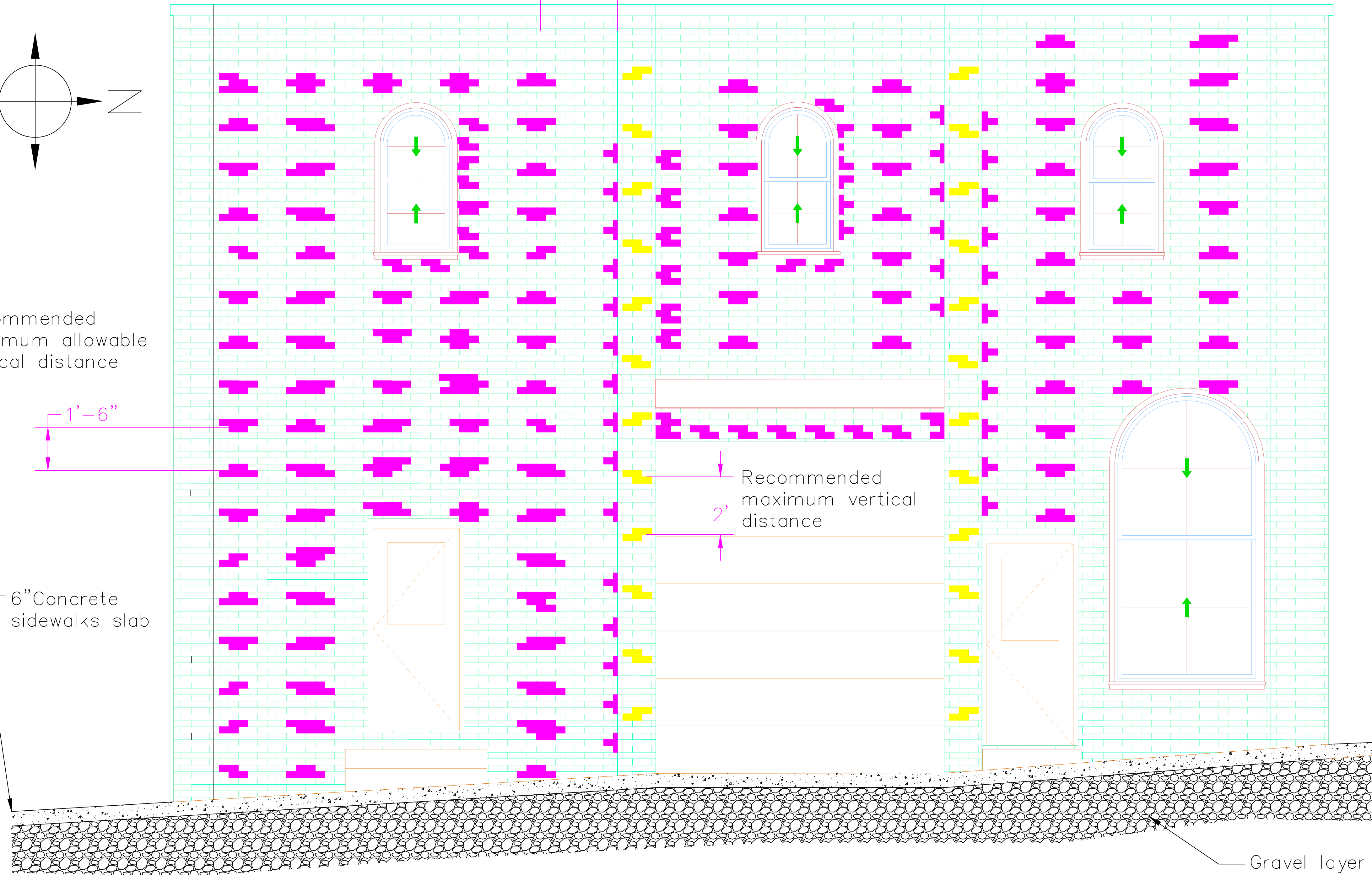
2'-8"

Recommended maximum vertical distance

2'

6" Concrete sidewalks slab

Gravel layer



PROJECT: CEE-4850  
DATE: 4/11/2019  
DRAWN BY: Nowaf Sulttan  
REVISION:  
IOWA CITY, IOWA 52242  
PHONE: 319.335.5647  
FAX: 319.335.5680  
EMAIL: civil-hawks@uiowa.edu

THE UNIVERSITY OF IOWA  
CIVIL AND ENVIRONMENTAL ENGINEERING

4105 SEAMANS CENTER FOR THE  
ENGINEERING ARTS AND SCIENCES  
103 S CAPITOL ST  
IOWA CITY, IOWA 52242  
PHONE: 319.335.5647  
FAX: 319.335.5680  
EMAIL: civil-hawks@uiowa.edu



EDUCATIONAL - NOT FOR CONSTRUCTION

# Historic Rehabilitation

590 Main Street  
Manning, IA 51455

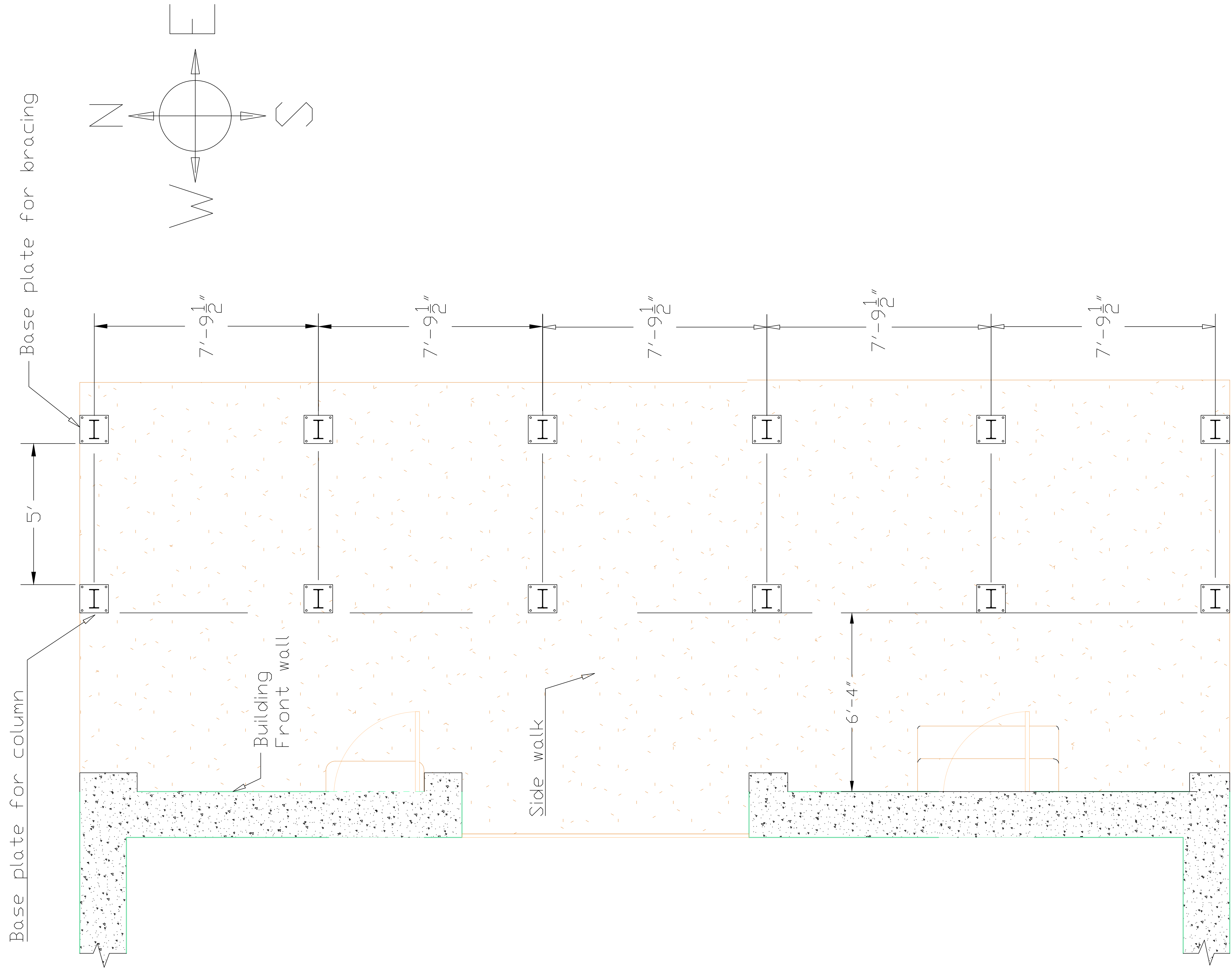
SHEET NAME

Brick Removal Locations

SHEET NO.

# S8





Top View of the sidewalk and the locations of the base plates

EDUCATIONAL - NOT FOR CONSTRUCTION

**Historic Rehabilitation**

590 Main Street  
Manning, IA 51455

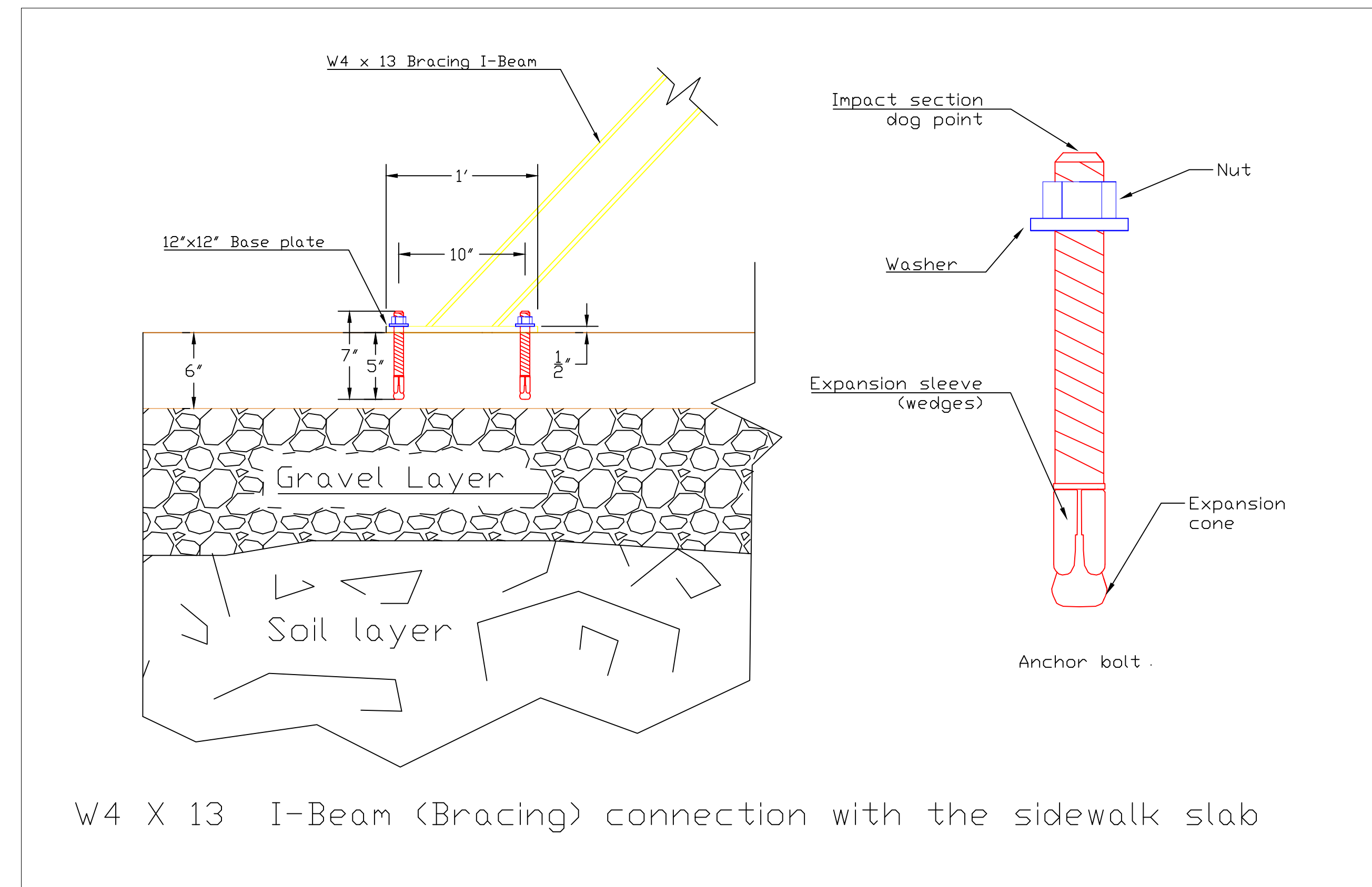
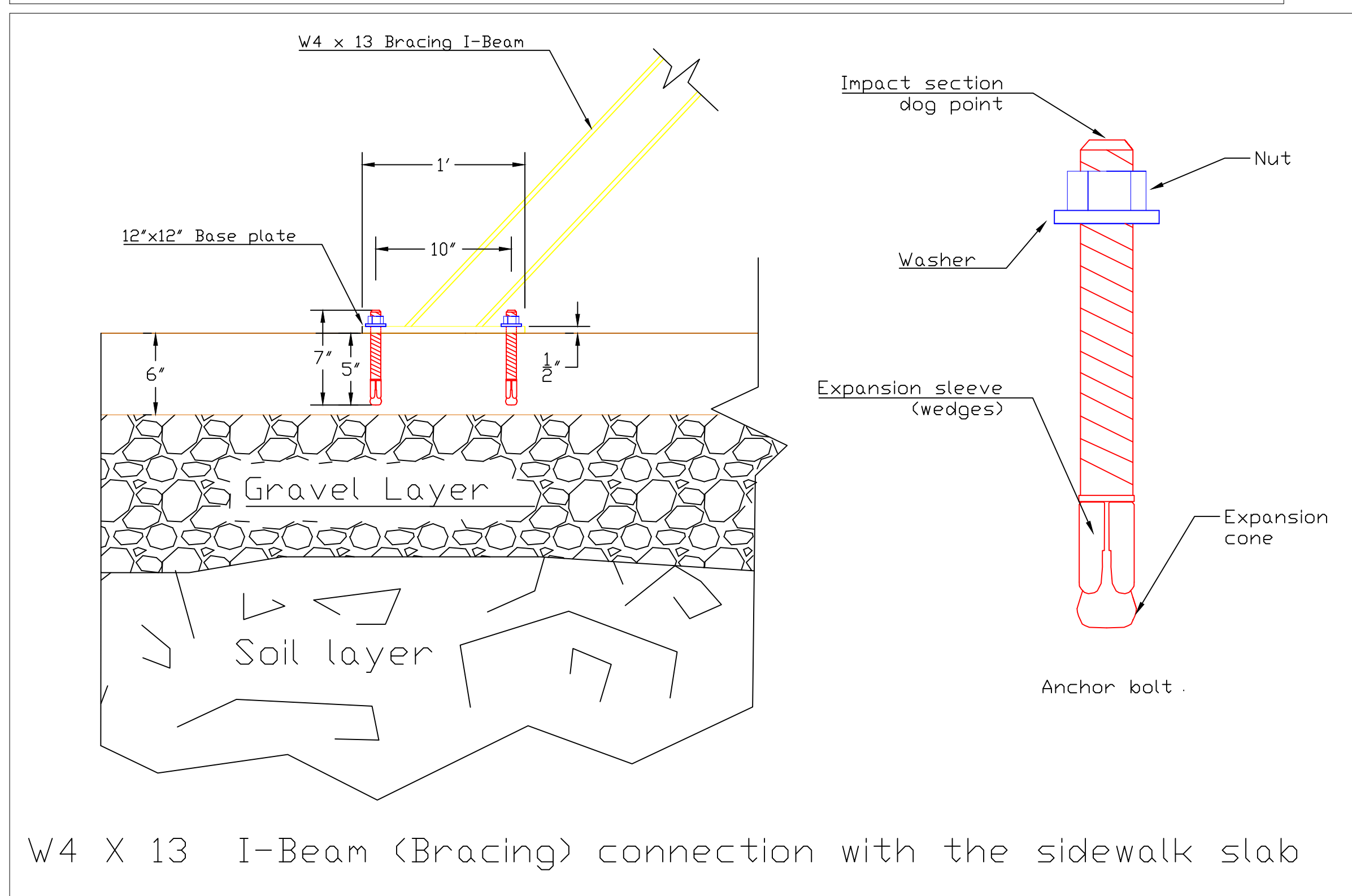
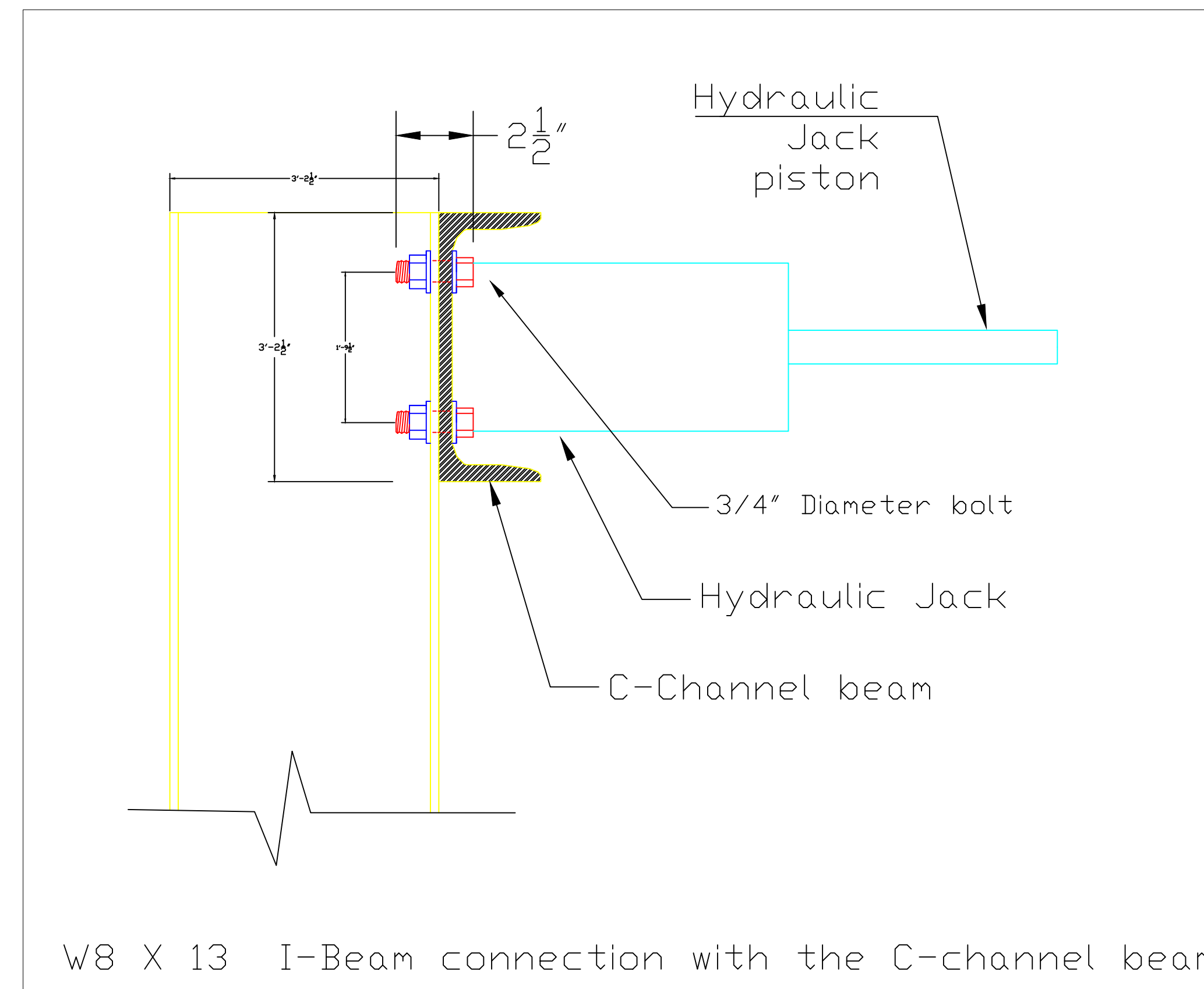
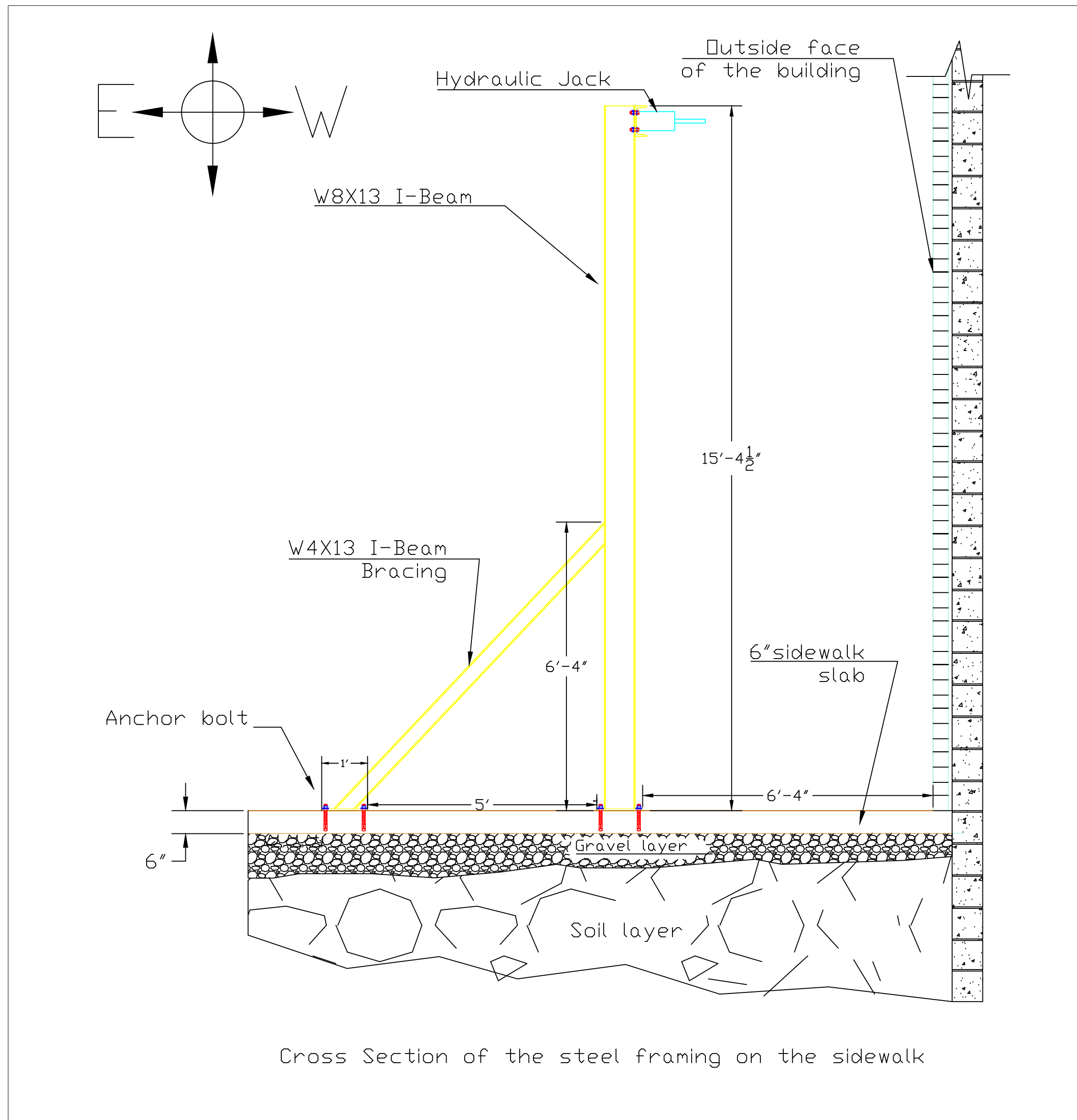
SHEET NAME  
Base Plate Locations

SHEET NO.  
**S9**

**THE UNIVERSITY OF IOWA**  
**CIVIL AND ENVIRONMENTAL ENGINEERING**  
4105 SEAMANS CENTER FOR THE  
ENGINEERING ARTS AND SCIENCES  
103 S CAPITOL ST  
IOWA CITY, IOWA 52242  
PHONE: 319.335.5647  
FAX: 319.335.5660  
EMAIL: [civil-hawks@uiowa.edu](mailto:civil-hawks@uiowa.edu)



PROJECT: CEE-4850  
DATE: 04/11/19  
DRAWN BY: NS  
REVISION:



PROJECT: CEE-4850  
 DATE: 4/11/2019  
 DRAWN BY: Nowaf Sultem  
 REVISION:  
 IOWA CITY, IOWA 52242  
 PHONE: 319.335.5647  
 FAX: 319.335.5660  
 EMAIL: civil-hawks@iowa.edu

**THE UNIVERSITY OF IOWA**  
**CIVIL AND ENVIRONMENTAL ENGINEERING**  
 4105 SEAMANS CENTER FOR THE  
 ENGINEERING ARTS AND SCIENCES  
 103 S CAPITOL ST  
 IOWA CITY, IOWA 52242  
 PHONE: 319.335.5647  
 FAX: 319.335.5660  
 EMAIL: civil-hawks@iowa.edu

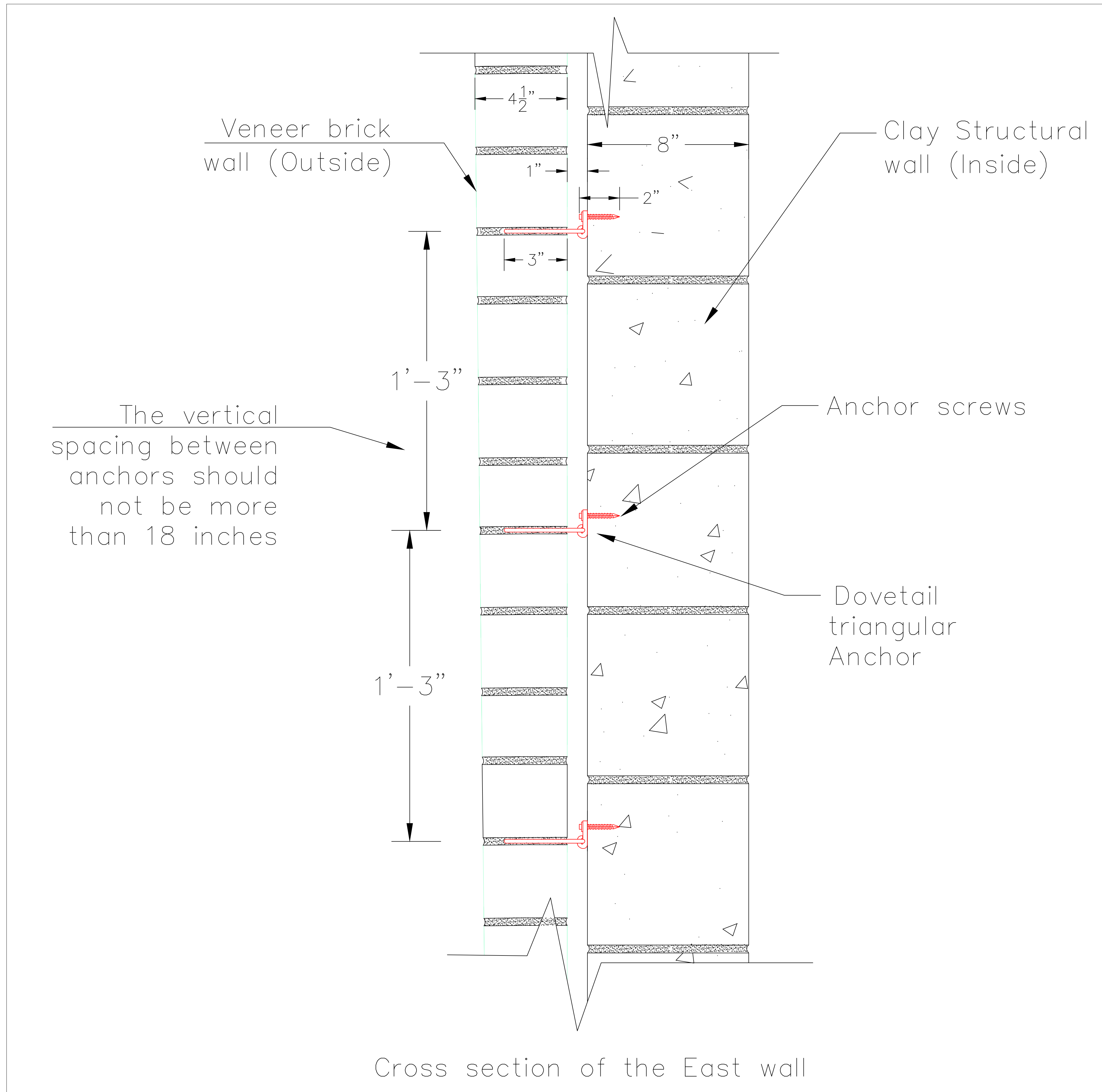


EDUCATIONAL - NOT FOR CONSTRUCTION

**Historic Rehabilitation**  
 590 Main Street  
 Manning, IA 51455

SHEET NAME  
 Detail View

SHEET NO.  
**S10**



|           |              |
|-----------|--------------|
| PROJECT:  | CEE: 4850    |
| DATE :    | 4/11/2019    |
| DRAWN BY: | Nowaf Sulten |
| REVISION: |              |

**THE UNIVERSITY OF IOWA**  
**CIVIL AND ENVIRONMENTAL ENGINEERING**  
 4105 SEAMANS CENTER FOR THE  
 ENGINEERING ARTS AND SCIENCES  
 103 S CAPITOL ST  
 IOWA CITY, IOWA 52242  
 PHONE: 319.335.5647  
 FAX: 319.335.5660  
 EMAIL: civil-hawks@uiowa.edu



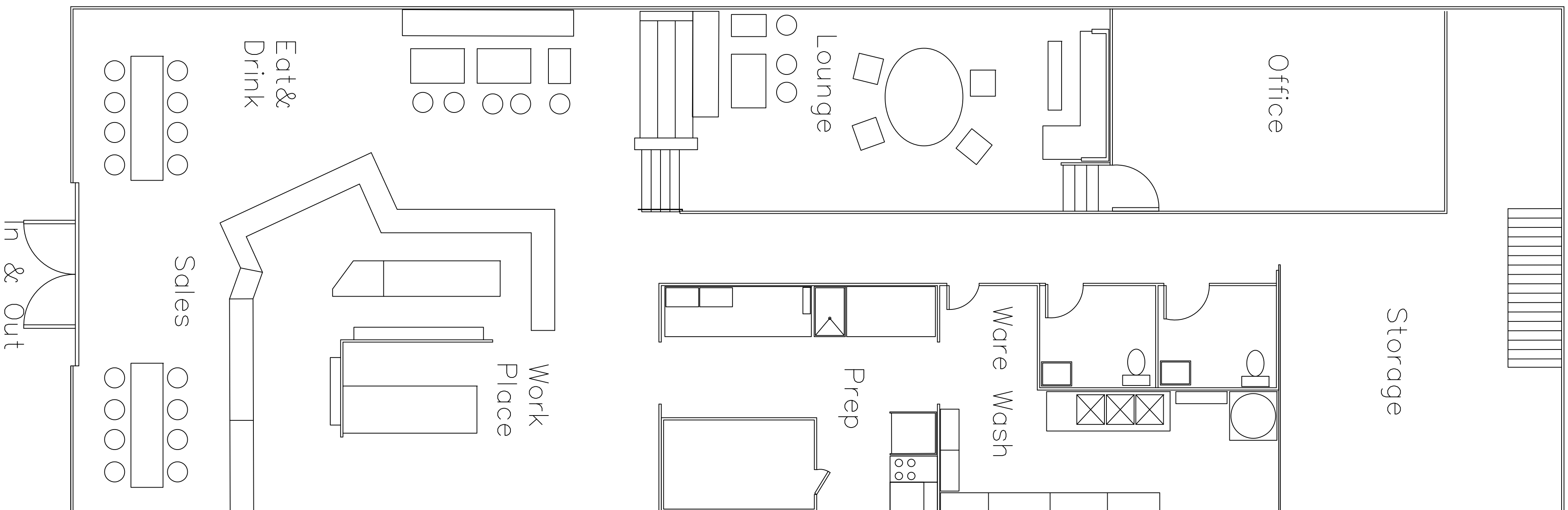
EDUCATIONAL - NOT FOR CONSTRUCTION

**Historic Rehabilitation**

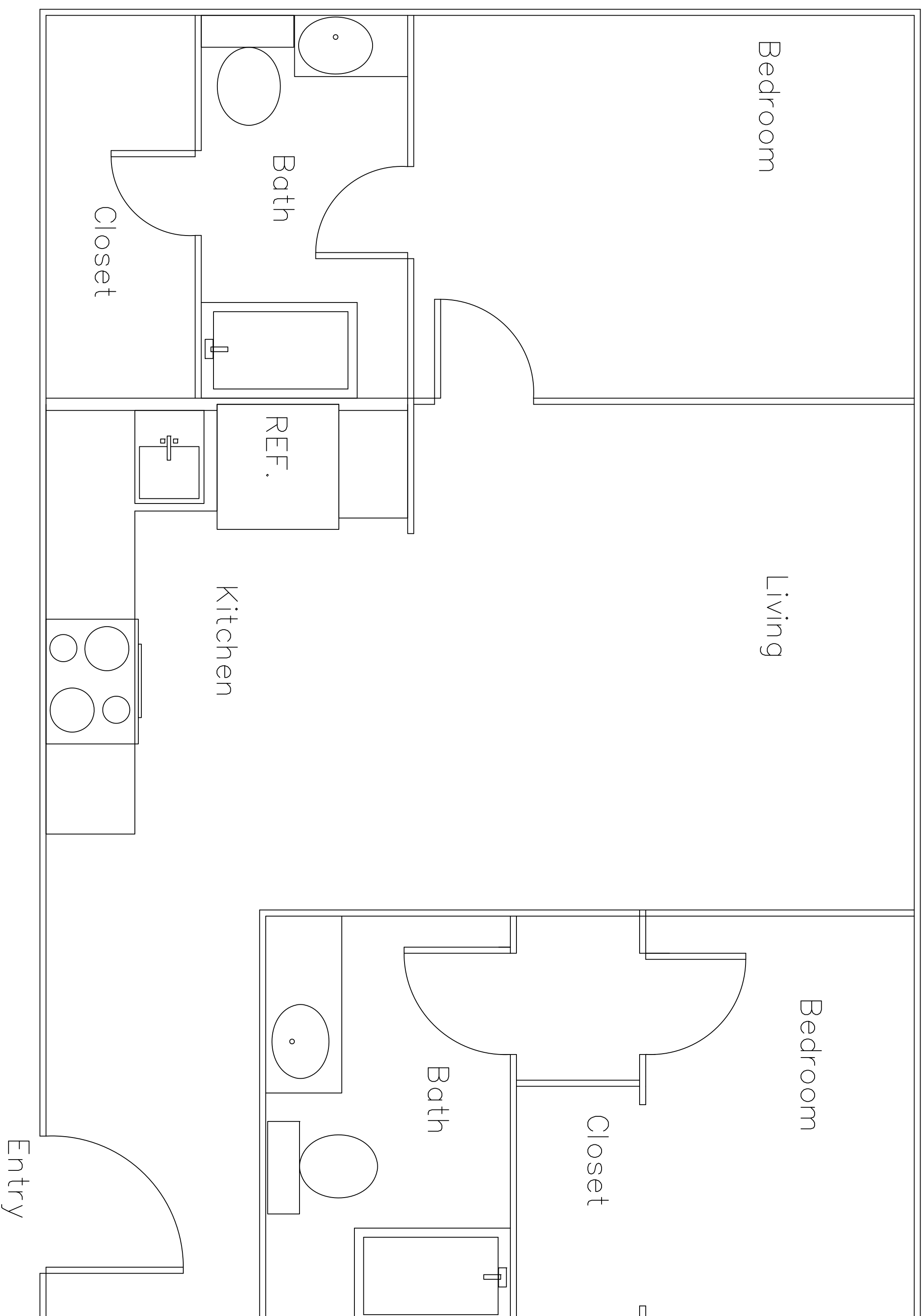
SHEET NAME  
 Anchor tie locations

SHEET NO.  
**S11**

Ground Floor  
Floor Plan



Second Floor  
Floor Plan



|           |           |
|-----------|-----------|
| PROJECT:  | CEE: 4850 |
| DATE :    | 4/12/2019 |
| DRAWN BY: | YM        |
| REVISION: |           |

**THE UNIVERSITY OF IOWA**  
**CIVIL AND ENVIRONMENTAL ENGINEERING**

4105 SEAMANS CENTER FOR THE  
ENGINEERING ARTS AND SCIENCES  
103 S CAPITOL ST  
IOWA CITY, IOWA 52242  
PHONE: 319.335.5647  
FAX: 319.335.5660  
EMAIL: civil-hawks@uiowa.edu

CEE logo BW - notext.tif

EDUCATIONAL - NOT  
FOR CONSTRUCTION

**Historic Rehabilitation**

590 Main Street  
Manning City, IA, 51455

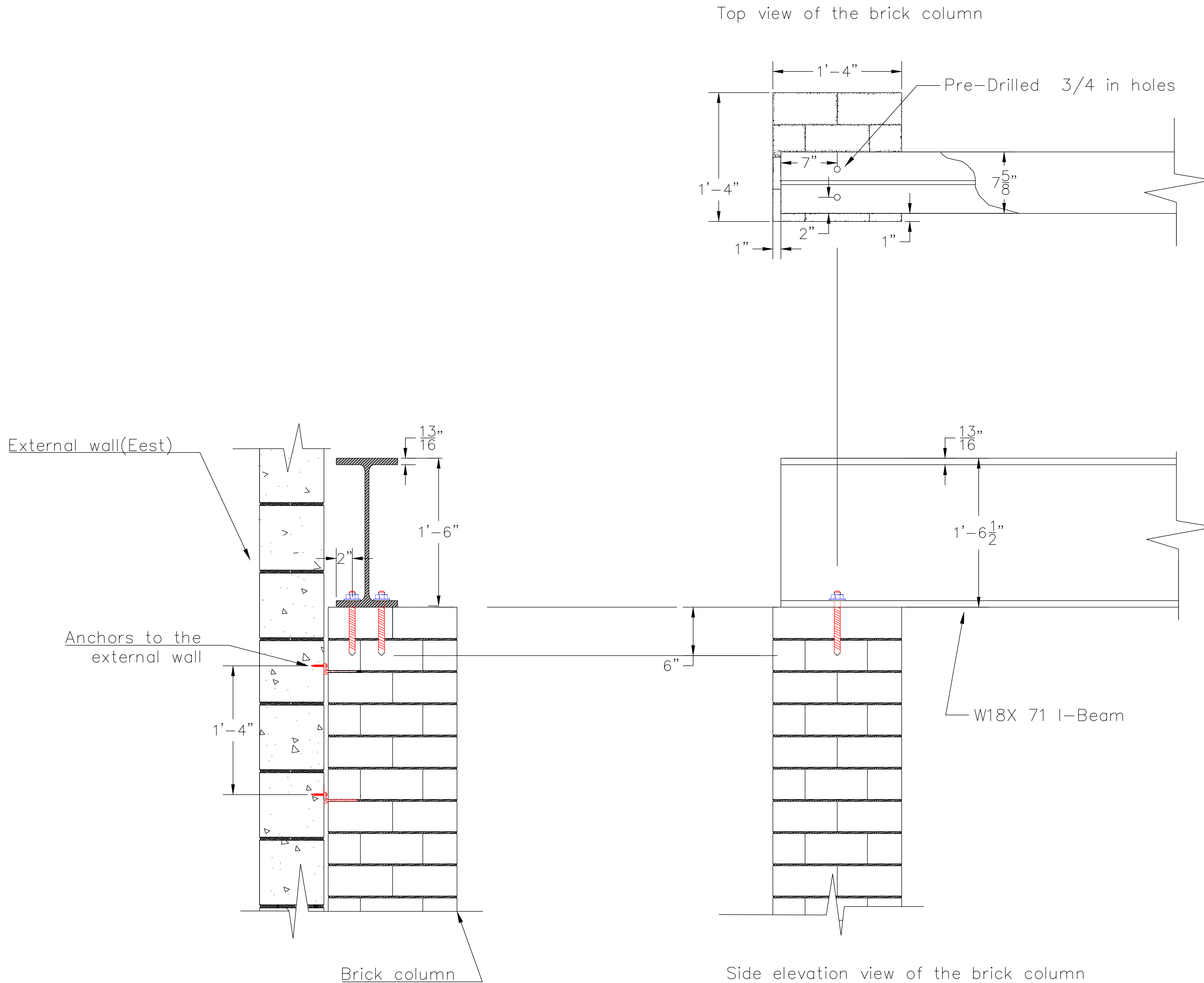
SHEET NAME

Ground Floor  
Second Floor

SHEET NO.

**S12**





|           |              |
|-----------|--------------|
| PROJECT:  | CEE: 4850    |
| DATE :    | 4/11/2019    |
| DRAWN BY: | Nowaf Sultem |
| REVISION: |              |

**THE UNIVERSITY OF IOWA**  
**CIVIL AND ENVIRONMENTAL ENGINEERING**  
 4105 SEAMANS CENTER FOR THE  
 ENGINEERING ARTS AND SCIENCES  
 103 S CAPITOL ST  
 IOWA CITY, IOWA 52242  
 PHONE: 319.335.5647  
 FAX: 319.335.5660  
 EMAIL: [civil-hawks@uiowa.edu](mailto:civil-hawks@uiowa.edu)



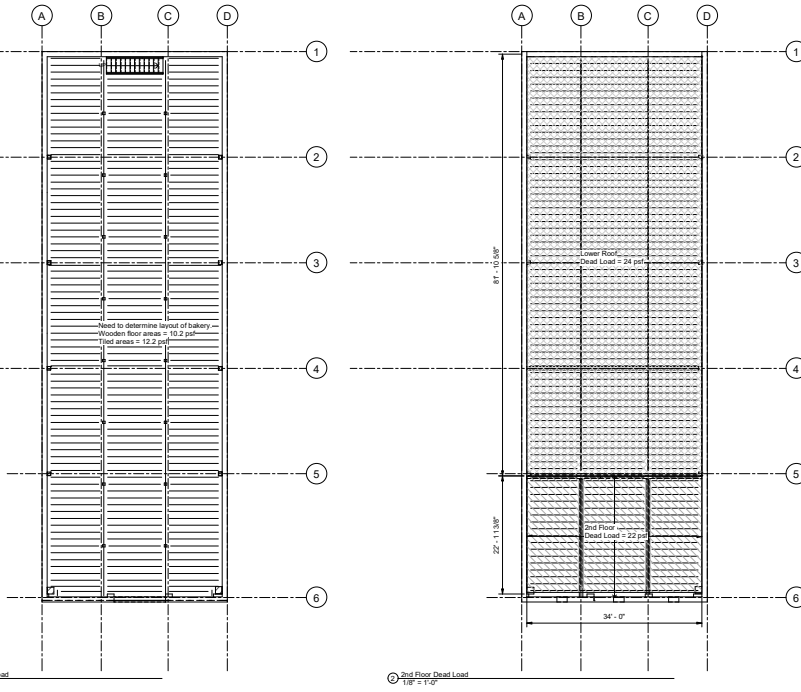
EDUCATIONAL - NOT FOR CONSTRUCTION

**Historic Rehabilitation**

590 Main Street  
 Manning, IA 51455

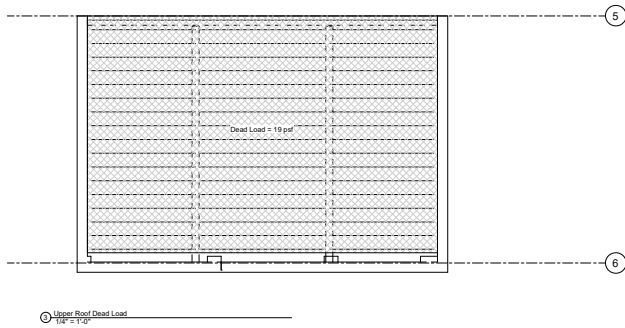
SHEET NAME  
 W18 x71 Connection

SHEET NO.  
**S13**



1st Floor Dead Load  
1/8" = 1'-0"

2nd Floor Dead Load  
1/8" = 1'-0"



Upper Roof Dead Load  
1/4" = 1'-0"

**S14**

SHEET NAME  
Dead Loads

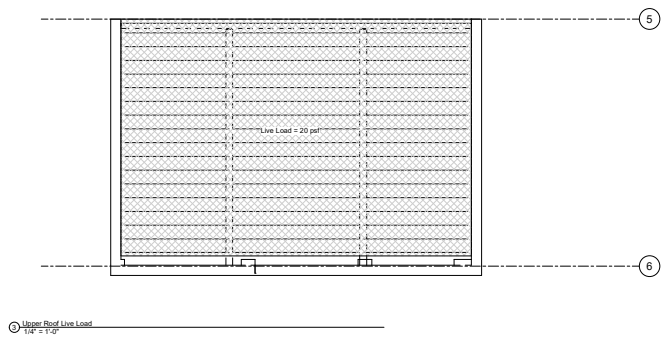
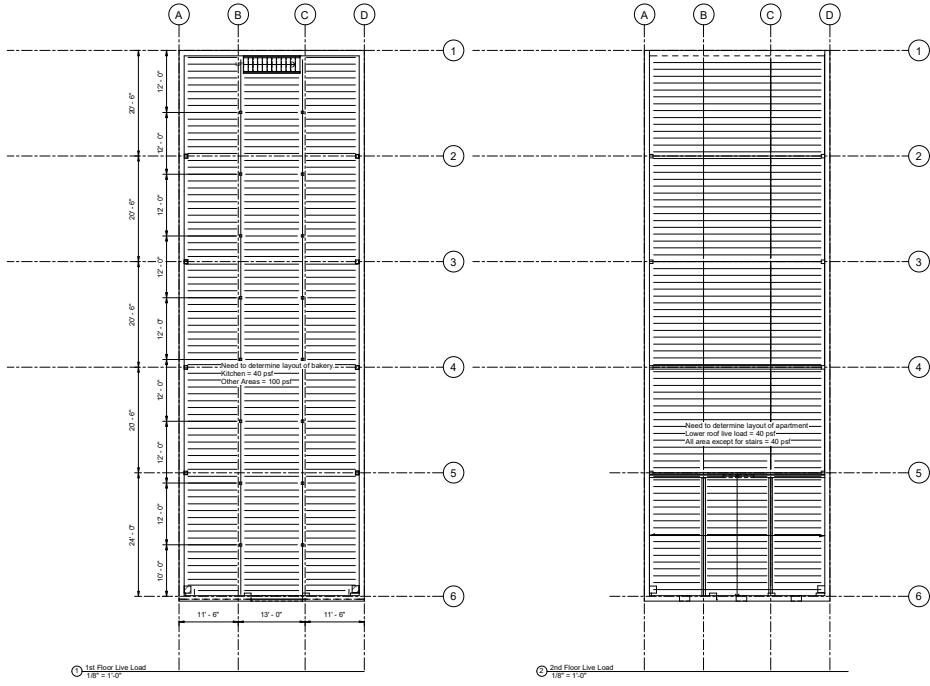
**Historic Rehabilitation**

590 Main Street  
Manning, IA 51455



**THE UNIVERSITY OF IOWA  
CIVIL AND ENVIRONMENTAL ENGINEERING**  
4155 SEAWANS CENTER FOR THE  
ENGINEERING ARTS AND SCIENCES  
603 S. GANTZ ST.  
IOWA CITY, IOWA 52242  
PHONE: 319.335.5647  
FAX: 319.335.5660  
EMAIL: civil-engine@iowa.edu

PROJECT: CEE 4850  
DATE: 4/5/2019  
DRAWN BY: TW  
REVISION: 1



**S15**  
SHEET NO.  
LIVE LOADS

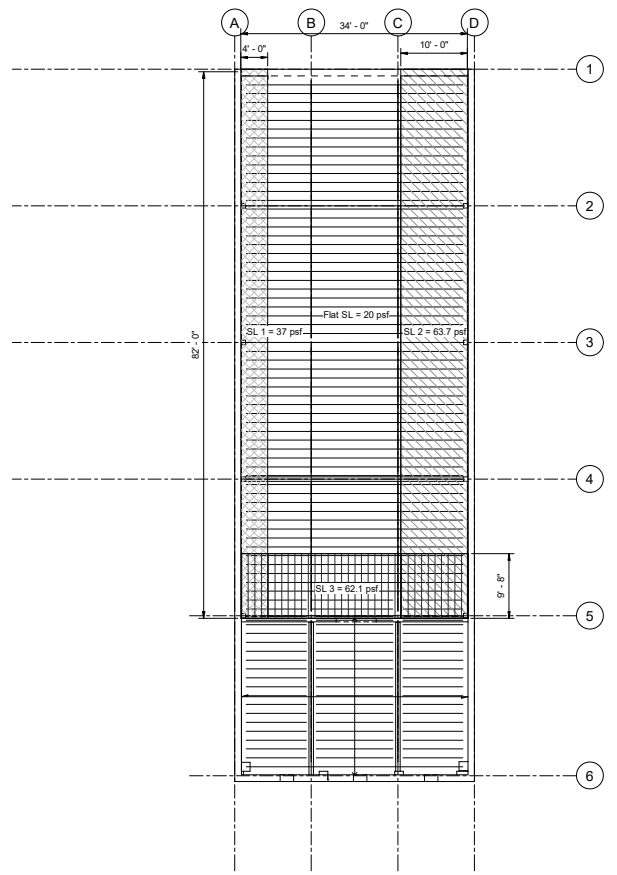
**Historic Rehabilitation**  
590 Main Street  
Manning, IA 51455



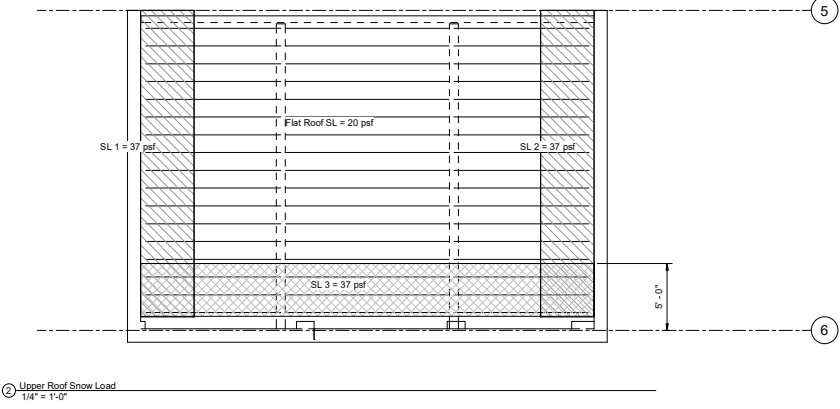
**THE UNIVERSITY OF IOWA  
CIVIL AND ENVIRONMENTAL ENGINEERING**  
4155 SEAWANS CENTER FOR THE  
ENGINEERING ARTS AND SCIENCES  
603 S. GANTZ ST.  
IOWA CITY, IOWA 52242  
PHONE: 319.335.5647  
FAX: 319.335.5660  
EMAIL: civl-hawke@iowa.edu

PROJECT: CEE 4850  
DATE: 4/5/2019  
DRAWN BY: TW  
REVISION: 1





1 2nd Floor Snow Load  
1/8" = 1'-0"



2 Upper Roof Snow Load  
1/4" = 1'-0"

|           |           |
|-----------|-----------|
| PROJECT:  | CEE: 4860 |
| DATE:     | 4/5/2019  |
| DRAWN BY: | TYW       |
| REVISION: | 1         |

**THE UNIVERSITY OF IOWA**  
**CIVIL AND ENVIRONMENTAL ENGINEERING**  
 4105 SEAWAN CENTER FOR THE  
 ENGINEERING ARTS 103 S CAPITOL ST  
 IOWA CITY, IOWA 52242  
 PHONE: 319.335.5627  
 EMAIL: cve-harves@iowa.edu



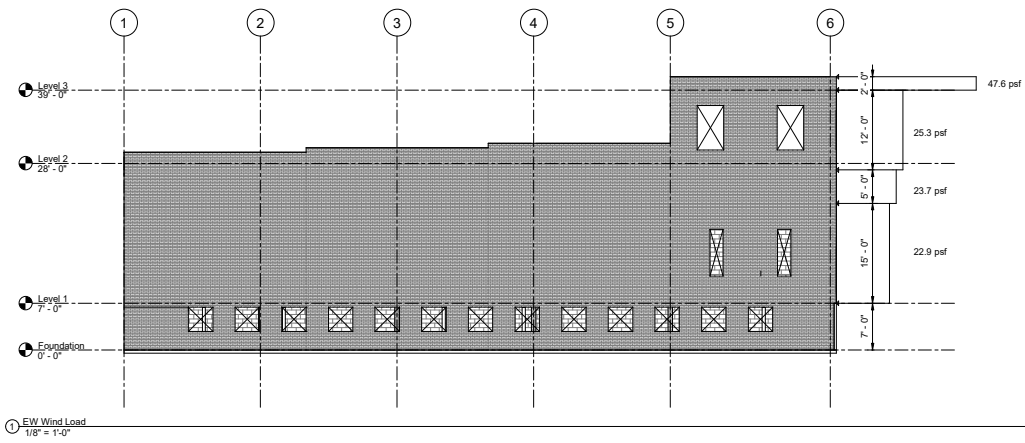
EDUCATIONAL - NOT FOR CONSTRUCTION

**Historic Rehabilitation**

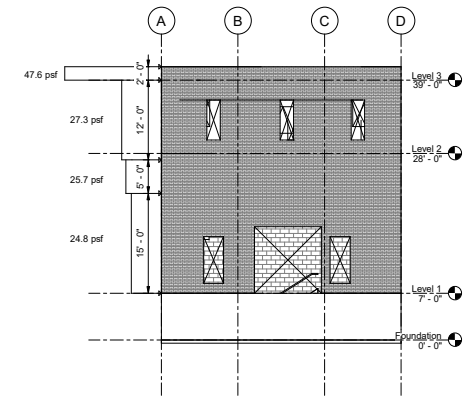
590 Main Street  
 Manning, IA 51455

SHEET NAME  
 Snow Loads

SHEET NO.  
**S16**



① EW Wind Load  
1/8" = 1'-0"



② NS Wind Load  
1/8" = 1'-0"

|           |          |
|-----------|----------|
| PROJECT:  | CEE 4860 |
| DATE:     | 4/5/2019 |
| DRAWN BY: | ITW      |
| REVISION: | 1        |

THE UNIVERSITY OF IOWA  
**CIVIL AND ENVIRONMENTAL ENGINEERING**  
 405 ENGINEERING CENTER  
 ENGINEERING PARTS AND SERVICES  
 IOWA CITY, IOWA 52242  
 PHONE: 319.335.9600  
 FAX: 319.335.9600  
 EMAIL: [civil-hawk@uiowa.edu](mailto:civil-hawk@uiowa.edu)



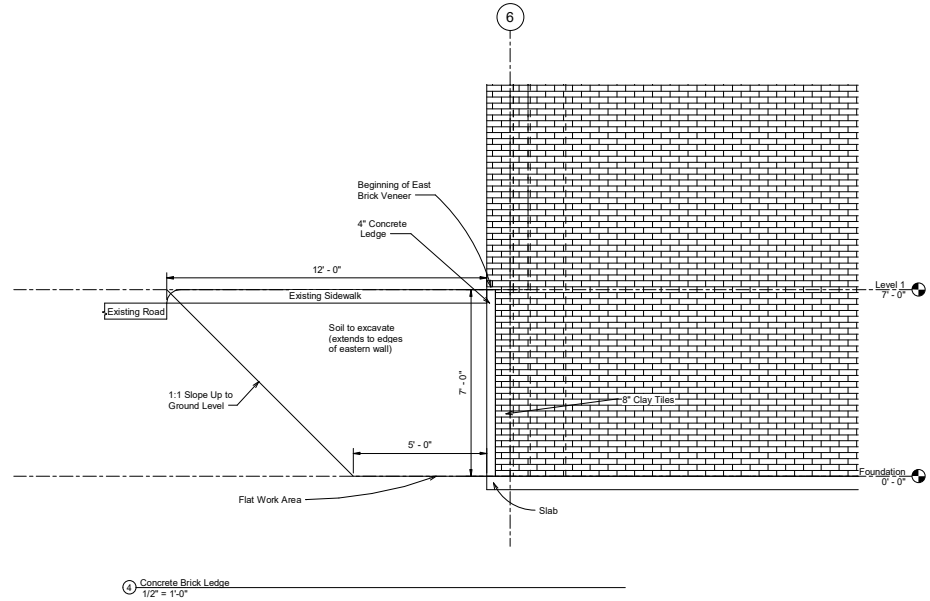
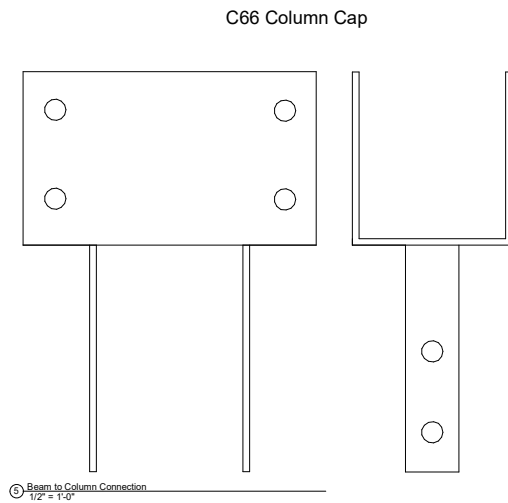
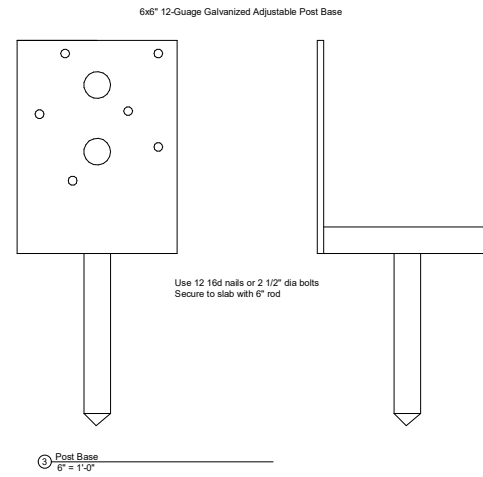
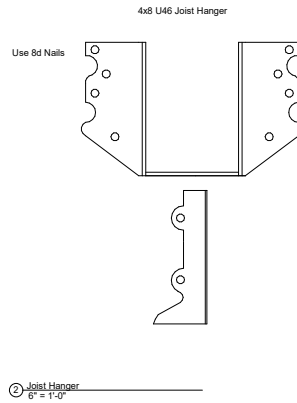
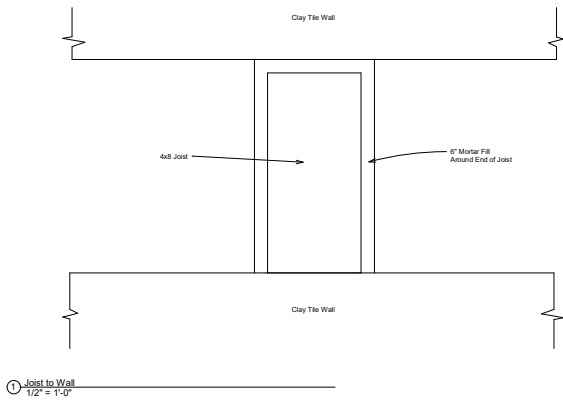
EDUCATIONAL - NOT FOR CONSTRUCTION

**Historic Rehabilitation**

590 Main Street  
 Manning, IA 51455

SHEET NAME  
 Wind Loads

SHEET NO.  
**S17**



|              |           |
|--------------|-----------|
| PROJECT:     | CEE: 3004 |
| DATE:        | 4/5/2019  |
| DESIGNED BY: | ITW       |
| DRAWN BY:    | ITW       |
| REVISION:    | 1         |

THE UNIVERSITY OF IOWA  
**CIVIL AND ENVIRONMENTAL ENGINEERING**  
 ENGINEERING ADVISORY SERVICES  
 103 S. CAPITAL ST.  
 IOWA CITY, IOWA 52242  
 PHONE: 319.335.9600  
 FAX: 319.335.9600  
 EMAIL: [civil-hawk@uiowa.edu](mailto:civil-hawk@uiowa.edu)



EDUCATIONAL - NOT FOR CONSTRUCTION

**Historic Rehabilitation**

590 Main Street  
 Manning, IA 51455

SHEET NAME  
 Detail Cont.

SHEET NO.  
**S18**