

Photo Source: Farragutful



Sabula Municipal Boat Landing

May 5th, 2022

Community Project Lead:
Travis Woodhurst

Design Team

Isaac Mize
Project Manager



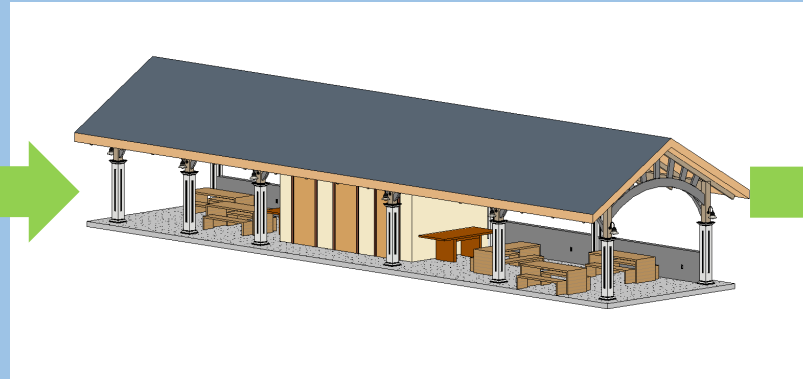
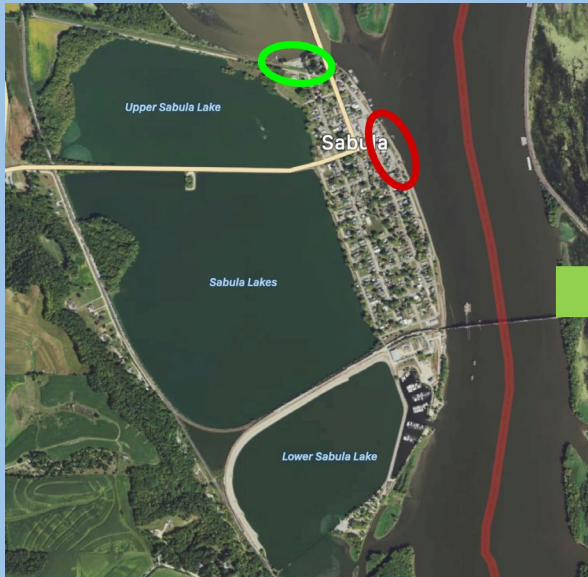
Caleb Wright



Larry Phan



Outline



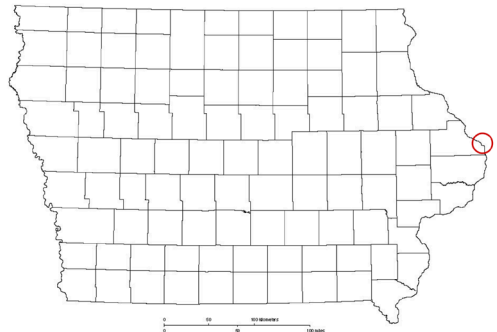
Boat Ramp \$48,300	Sidewalks, Landscaping, and Site Features \$52,000	Pavilion \$153,500
Boat Dock \$24,800	Total Project Cost \$357,000	Restroom/ Storm Shelter \$78,400

Project Overview

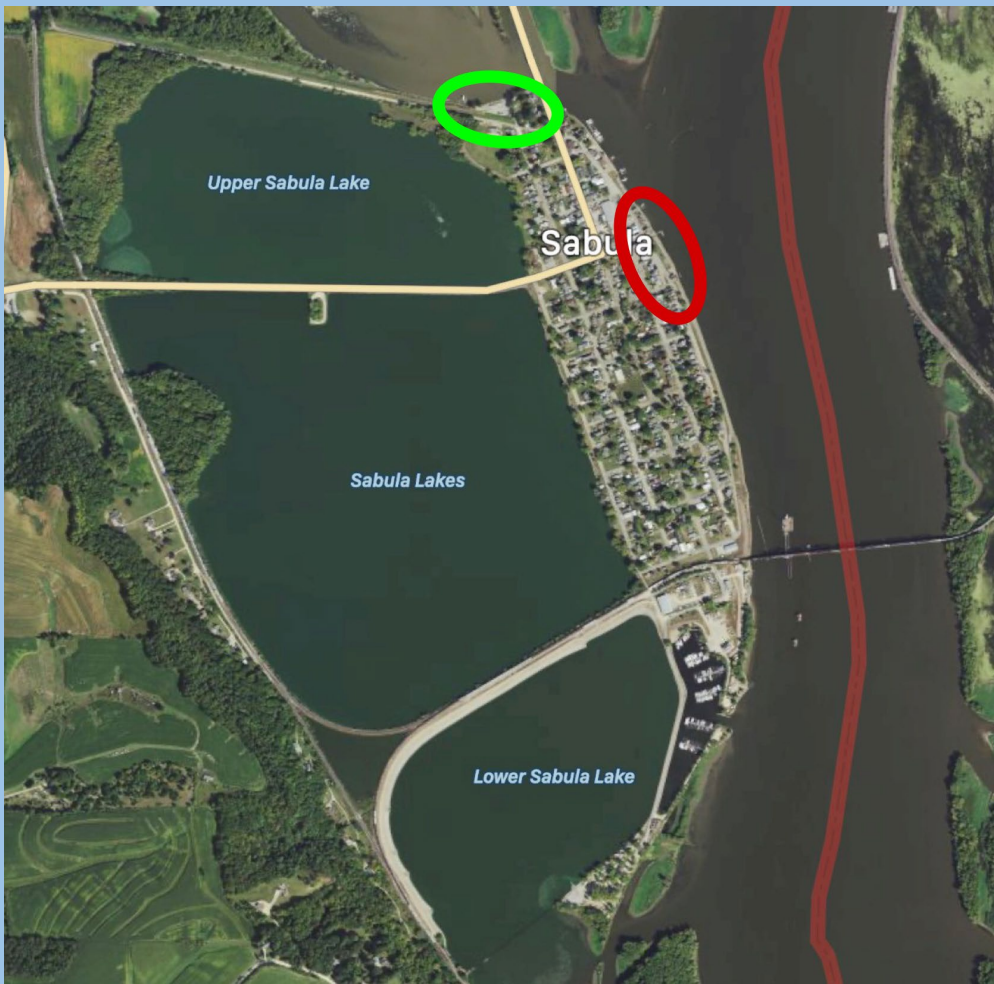
Design

Cost Estimate

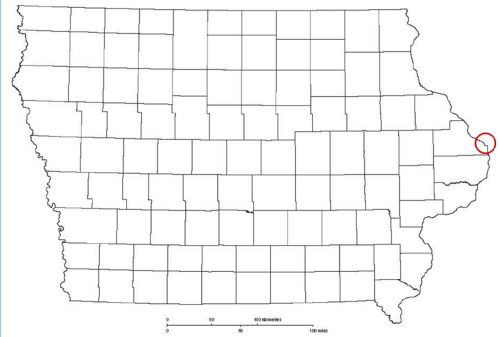
IOWA



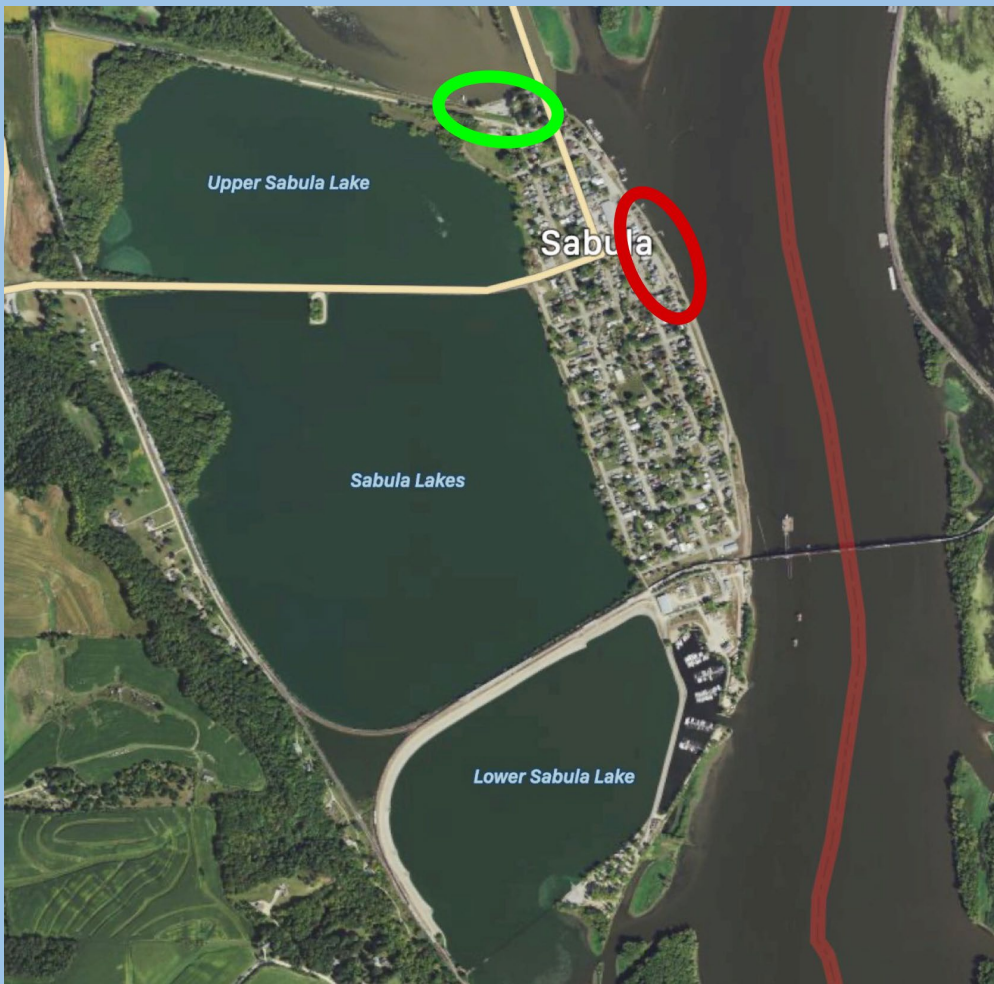
Project Location



IOWA



Project Location





Project Statement

The main objective of the project is to improve the accessibility and amenities of Sabula's municipal boat landing and park—creating an inviting outdoor space for residents, boaters, and visitors.



Project Elements

- Improved Dock Accessibility and Capacity
- New Pavilion featuring Restrooms and Storm Shelter
- Additional On-site Parking for Boat Trailers
- Tourism Wayfinding Board



Project Elements

- Improved Dock Accessibility and Capacity
- New Pavilion featuring Restrooms and Storm Shelter
- Additional On-site Parking for Boat Trailers
- Tourism Wayfinding Board

Project Elements

- Improved Dock Accessibility and Capacity
- **New Pavilion featuring Restrooms and Storm Shelter**
- Additional On-site Parking for Boat Trailers
- Tourism Wayfinding Board



Project Elements

- Improved Dock Accessibility and Capacity
- New Pavilion featuring Restrooms and Storm Shelter
- Additional On-site Parking for Boat Trailers
- Tourism Wayfinding Board



Project Elements



- Improved Dock Accessibility and Capacity
- New Pavilion featuring Restrooms and Storm Shelter
- Additional On-site Parking for Boat Trailers
- **Tourism Wayfinding Board**

Improved Dock Accessibility and Capacity



Improved Dock Accessibility and Capacity

Existing Infrastructure

Phase 1: Includes addition of preliminary dock pieces, concrete reconstruction of boat ramp, and street access to dock.

Phase 2: Additional dock sections added as needed.



Improved Dock Accessibility and Capacity



Photo Source: International Erosion Control Systems

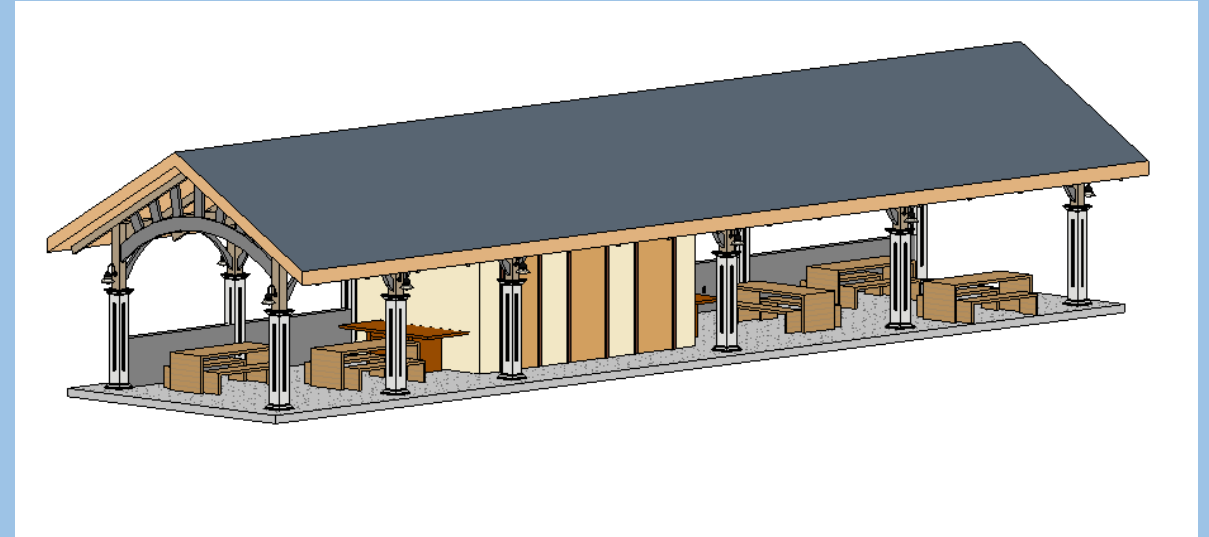
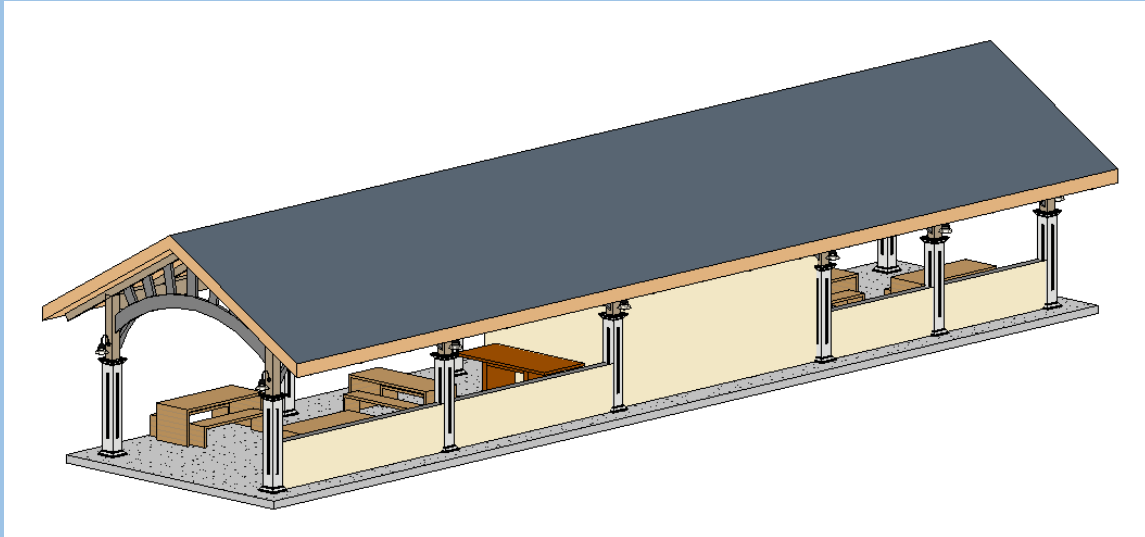
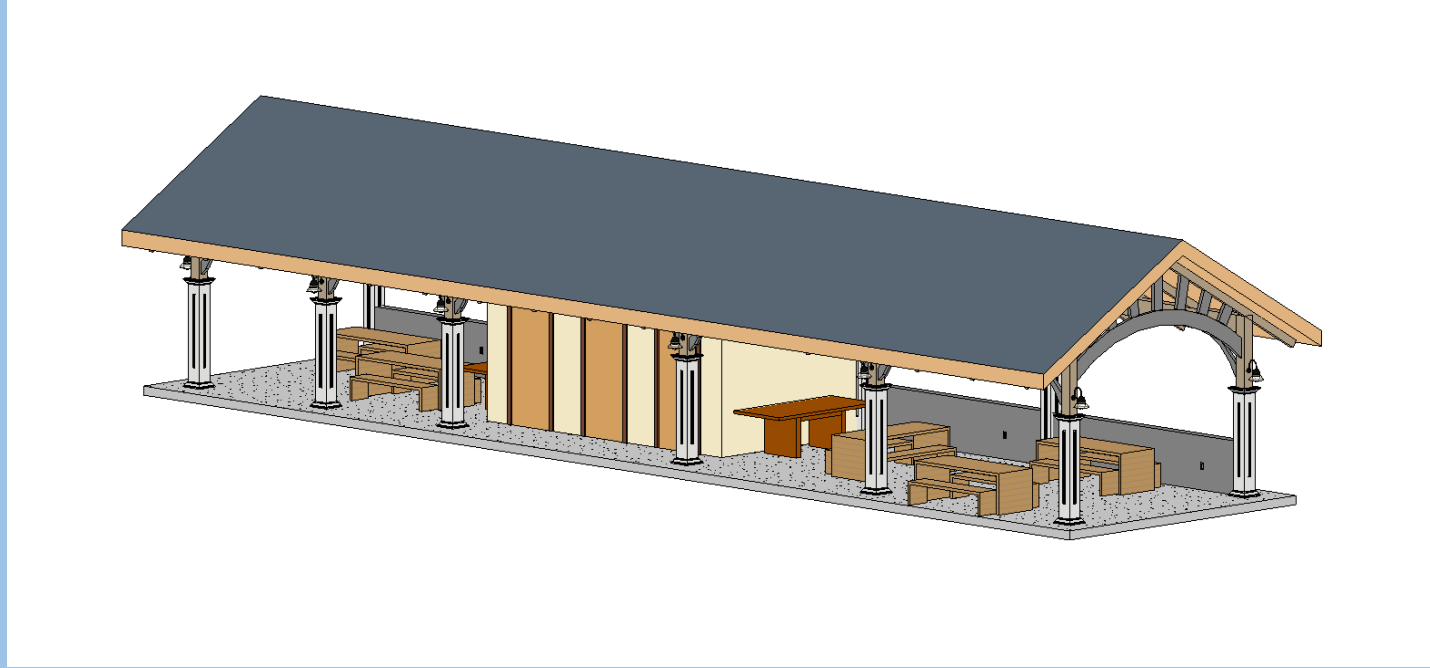
New Pavilion featuring Restrooms and Storm Shelter



New Pavilion featuring Restrooms and Storm Shelter



New Pavilion featuring Restrooms and Storm Shelter



Parking Plan

- 14 parking stalls, including 1 accessible stall
- 2 temporary trailer spots
- Long-term parking for trailers is available on the northside of the island.
- Extra room is available along street to widen parking spaces.



Tourism Wayfinding Board



Construction Cost Estimates

Boat Ramp

\$48,300

**Sidewalks,
Landscaping, and
Site Features**

\$52,000

Pavilion

\$153,500

Boat Dock

\$24,800

**Restroom/
Storm Shelter**

\$78,400

Construction Cost Estimates

Boat Ramp

\$48,300

**Sidewalks,
Landscaping, and
Site Features**

\$52,000

Pavilion

\$153,500

Boat Dock

\$24,800

**Total Project
Cost**

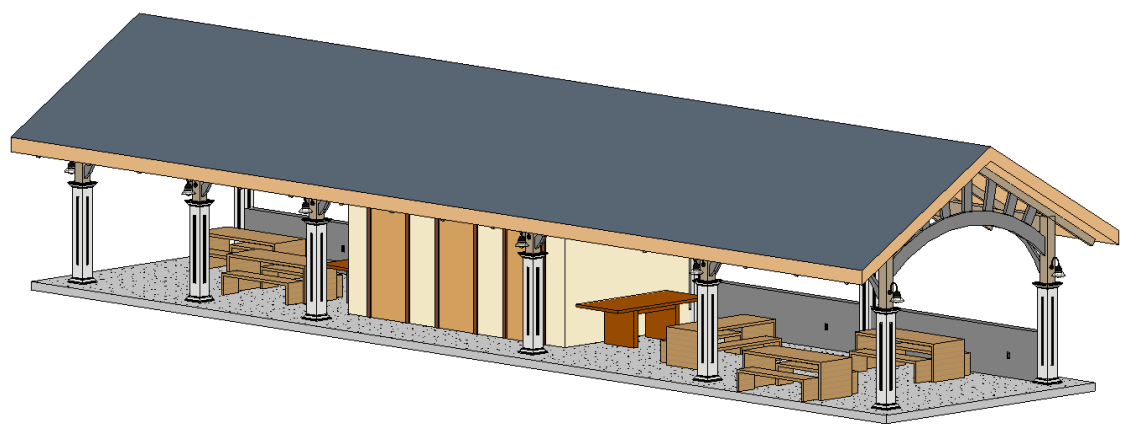
\$357,000

**Restroom/
Storm Shelter**

\$78,400



Thank You



Sabula: Iowa's Island City

Restroom and Storm Shelter Floor Plan

- Each restroom has a storm shelter capacity of 12 people.
- Both restrooms are ADA compliant.
- Features an unlocking mechanism in the event of severe weather, allowing for entry into the shelter.

