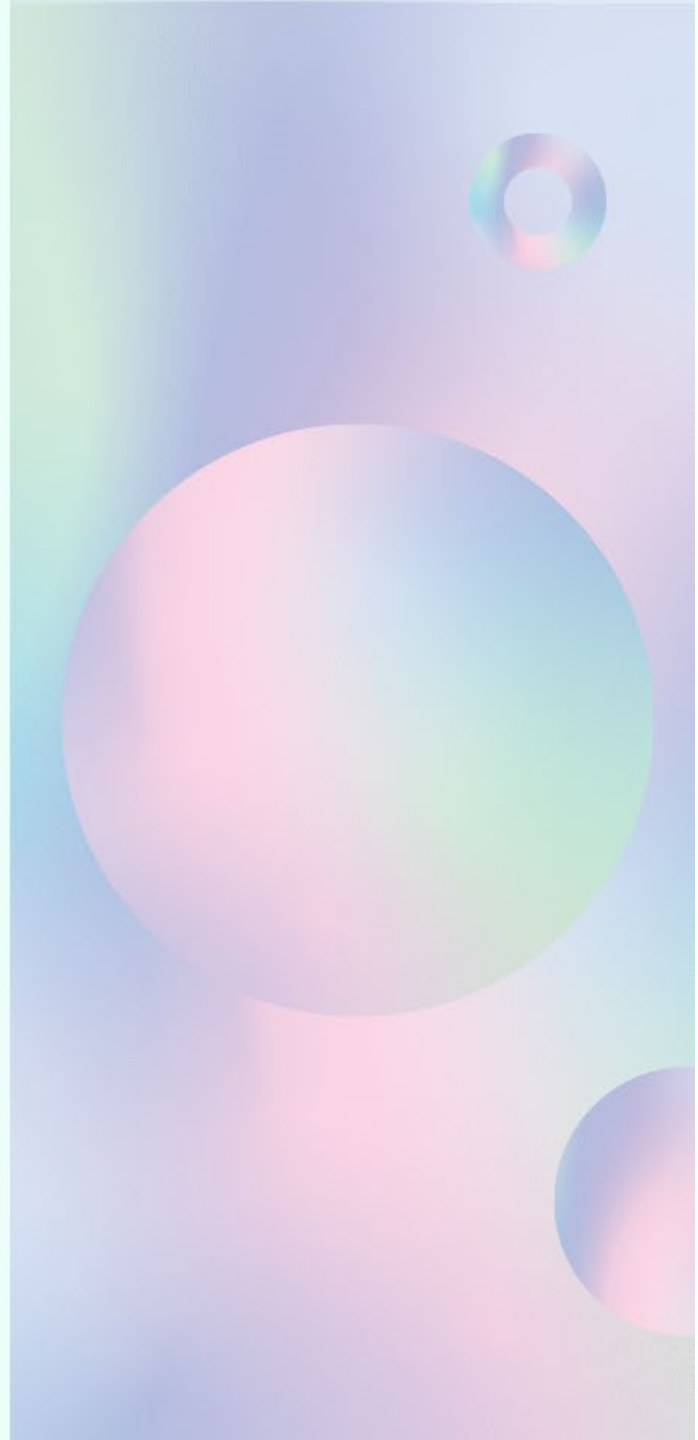


POLICING AND MENTAL HEALTH ON THE FRONT LINES

...

Kaitlin Abshire, Cecelia Bonilla, Natalie
Grodnitzky, Omar Lopez, Aurora Palmillas, Anjali
Puranam, Myah Rhodes, Alexandra Skores,
Konstadina Spanoudakis, Antonio Woodard,
Dr. Karen Heimer



Thank you to the Iowa
Initiative for Sustainable
Communities, Director
Travis Kraus, and
PolicyRise!

MEET THE TEAM



Anjali
Puranam



Aurora
Palmillas



Cecelia
Bonilla



Myah
Rhodes



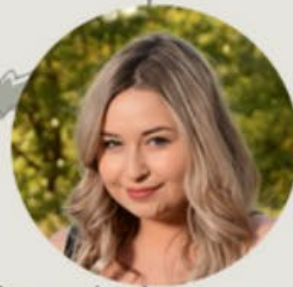
Kaitlin
Abshire



Konstadina
Spanoudakis



Antonio
Woodard



Alexandra
Skores



Omar
Lopez



Natalie
Grodnitzky

Policing And Mental Health



6-10% of all police contacts with the public in the U.S. involve people with serious mental illnesses

Philadelphia shooting is just the latest case in a long history of mental health crisis calls that turned deadly in the US

By Leah Asmelash, CNN

Updated 8:45 AM ET Thu, October 20, 2022

[HOME](#) > [NEWS](#)

A police officer said 'I don't have time for this' before shooting an 18-year-old with a mental illness dead in his home, his mother says

[OFFICER INVOLVED SHOOTING](#)

Video shows moments leading up to police shooting of unarmed man during mental health call

Family Mourns Man With Mental Illness Killed by Police and Calls for Change



Crisis Intervention Training (CIT)

What is CIT?

The History of CIT

CIT as an Evidence-Based Practice

DEMOGRAPHICS

Population: 67,328



10.3% reported having a disability

7.6% reported not having health insurance

17.4% reported being in poverty

Race or Ethnicity:

White; 70.8%

Black; 16.7%

Latinx; 6.9%

Waterloo Police
Department and Elevate



DEVELOPING A PLAN

Interviews:

Mary McKinnell: Director of Black Hawk County Social Services

Chris Latta: Director of Behavioral Health & Emergency Care at MercyOn

Tom Eachus: Director of Black Hawk Grundy Mental Health Services

Bob Lincoln: Project Director of Elevate

Major Joe Leibold of the Waterloo Police Department

Dr. Joel Fitzgerald, Waterloo Chief of Police

Sheriff Tony Thompson

Results: Survey Overview



- Perceptions of mental health
- Community services
- Demographics

- 54 responses; 118 officers
 - 45.8% response rate



Results: Department Demographics

- 78% male
- 95% white
- 85% educated beyond high school/GED
- 83% with 10+ years on the force
- 56% high-to-extreme stress



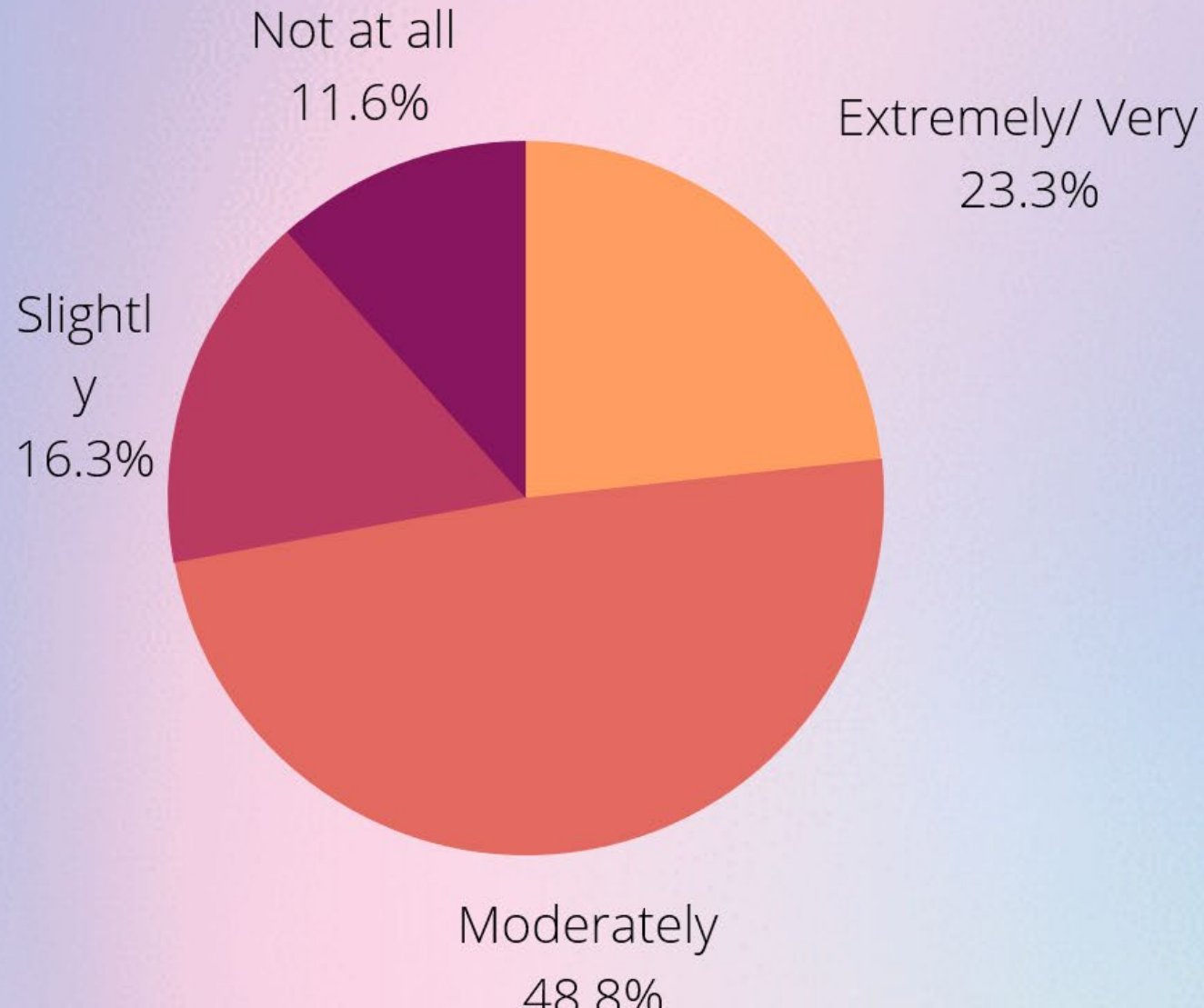
Results: Quantitative

Q3: Do you think responding effectively to people who are having a mental health crisis is...

- **An important role of police officers: 58.5%**
- **A role of police officers, but not an important one: 9.4%**
- **Not a role of police officers: 26.4%**
- **Don't have an opinion: 5.7%**



How knowledgable are officers about Elevate?



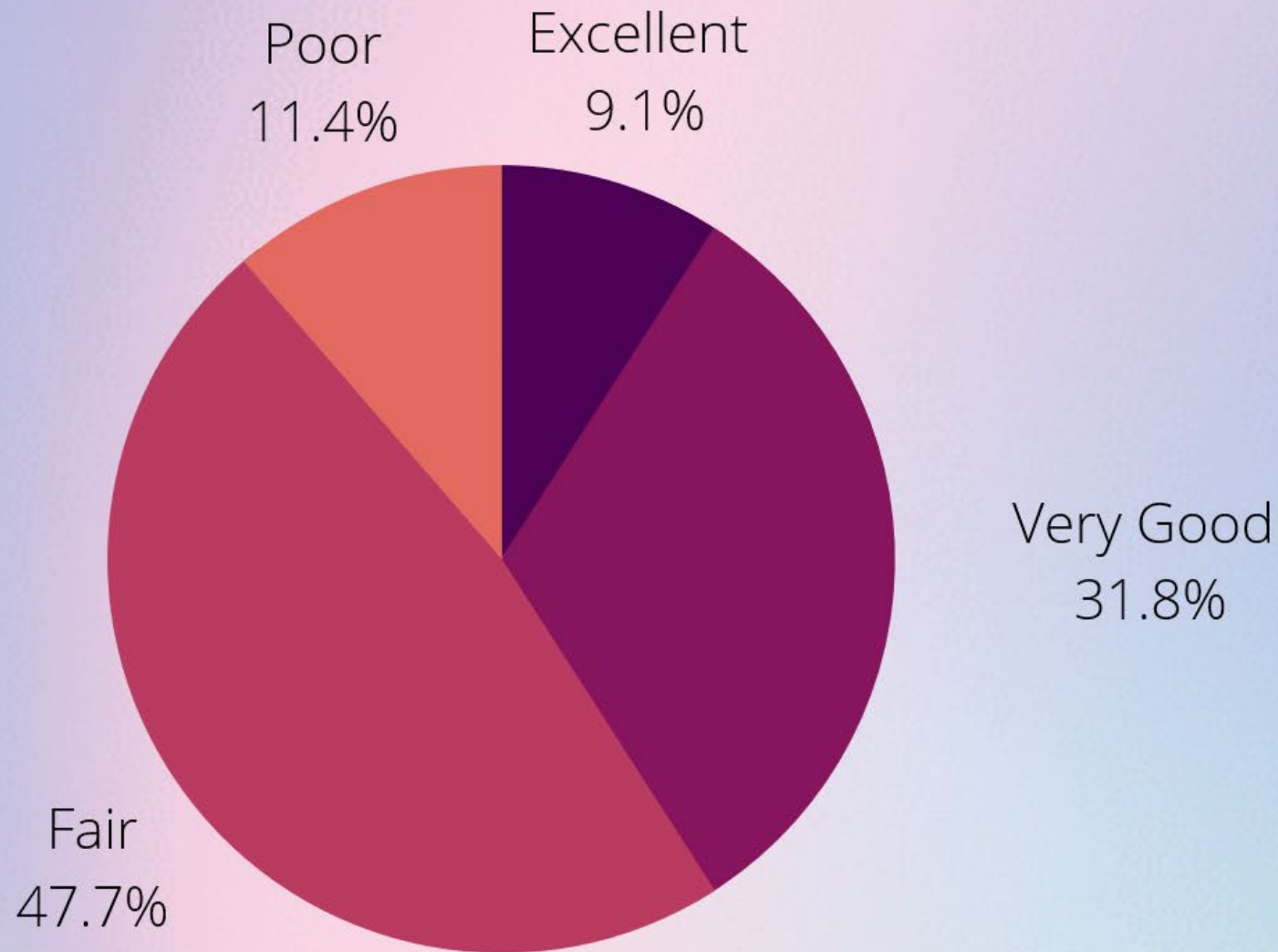
Results: Quantitative

Q8: In the last six months, when you have responded to a call and someone is having a mental health episode, how often have you used the Community Services Excel sheet that is in your squad car computer to refer that person to a service?

In every case:	0.0%
In most cases:	16%
In some cases:	10%
Not very often:	26.7%
Never:	46.7%

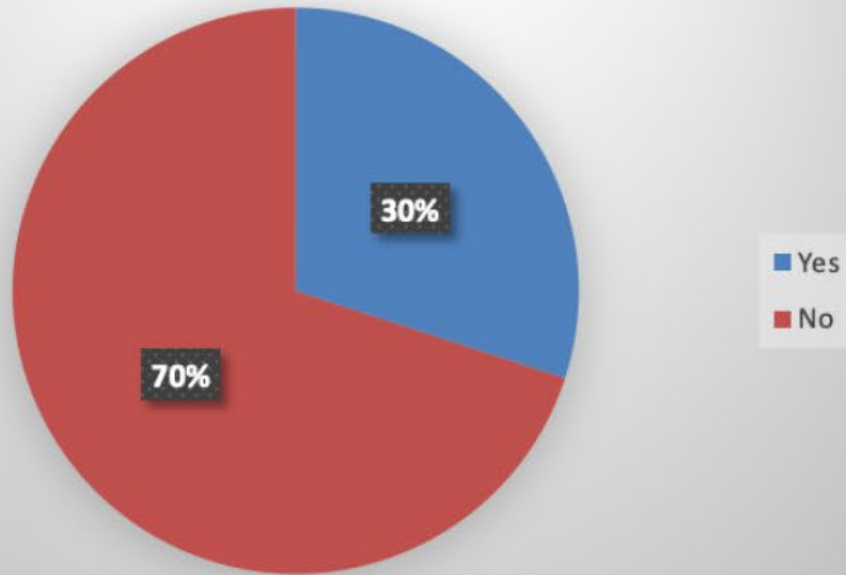


How officers perceive relationships between community mental health organizations and the department?

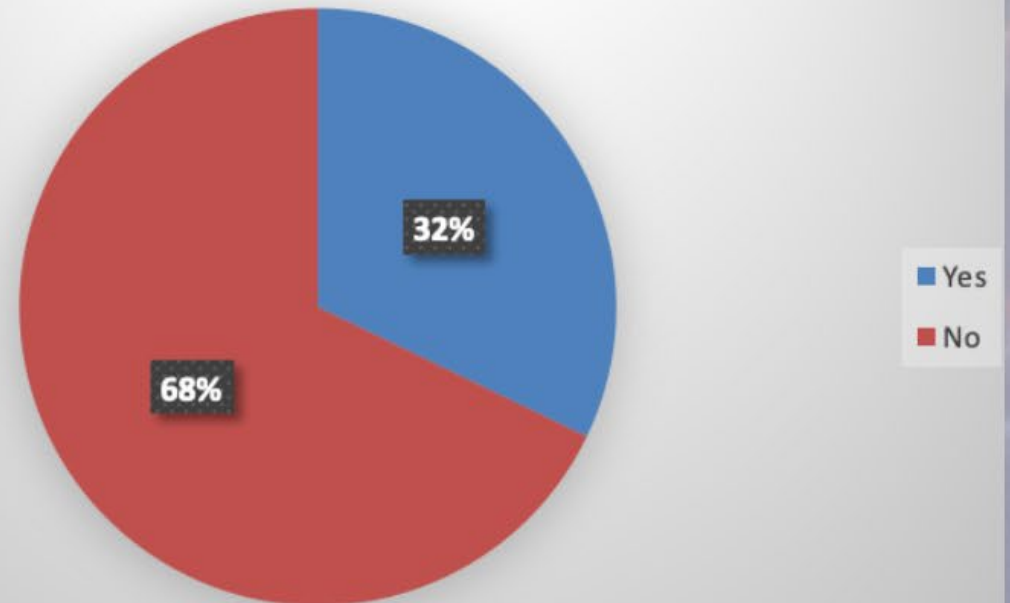


Waterloo Police and CIT training

CIT Trained officers



Would you like to be CIT trained?



Results: Qualitative

Dispatch informs that:

A call is received from the friend of a person who is “acting crazy.”

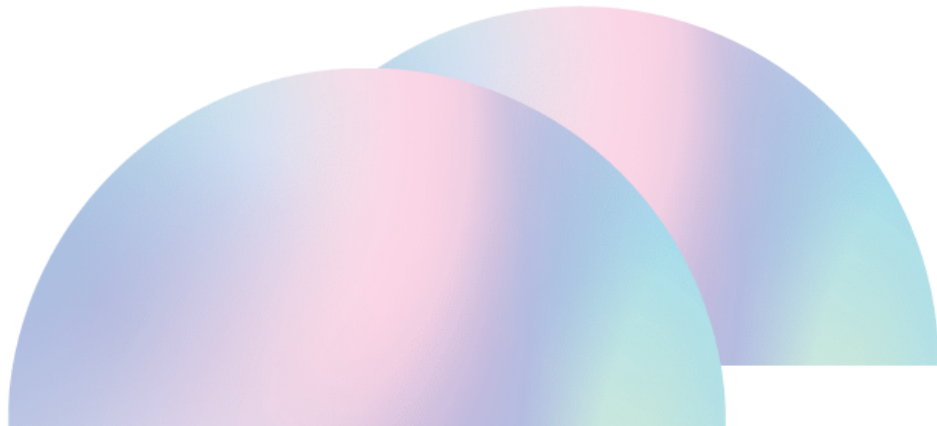
The caller went over to a friend's apartment, saw their behavior, and left for fear of their own safety.

Upon arrival you find a furniture barricade and a man who is obviously in distress behind it. The room is in disarray with empty beer bottles all around. The man demonstrates agitation and distrust.

What course of action do you take?

36 Officers completed the Scenario Question





Checking for Wellbeing: Physical & Mental

Asking for Assistance: Supervisor

Asking for Assistance: Other Mental Health Provider

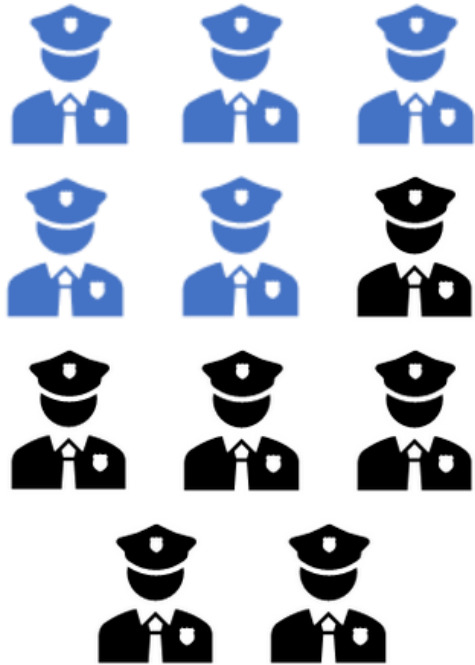
Asking for Assistance: Hospital

No Intervention



Check for Wellbeing - Mental & Physical

46% of C.I.T Officers



28% of Non-C.I.T Officers

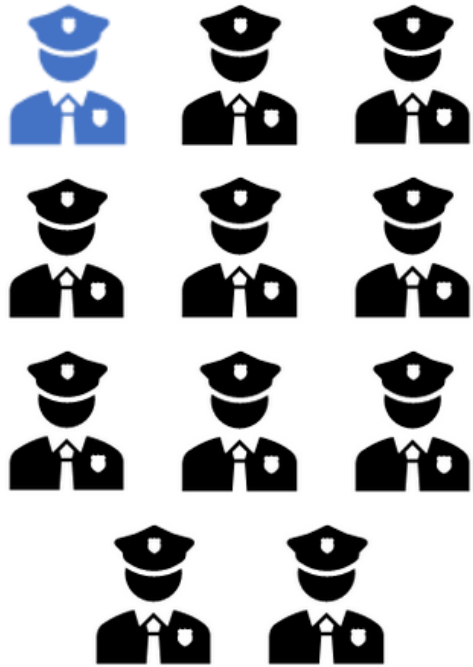


Elevate - Law Enforcement Liaison



Asking for Assistance - Supervisor

9% of C.I.T Officers



20% of Non-C.I.T Officers

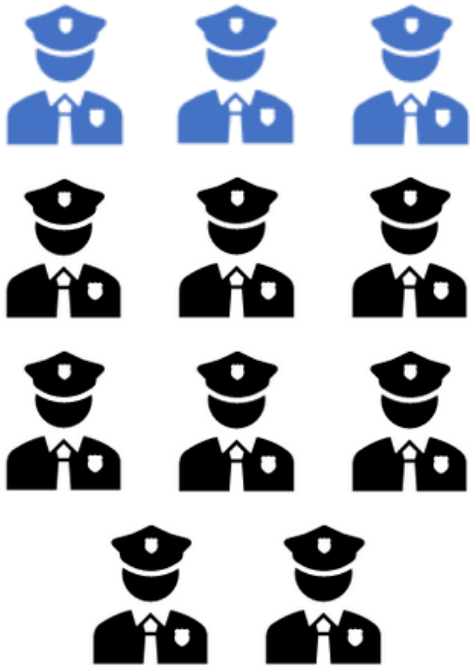


Elevate - Law Enforcement Liaison



Asking for Assistance - Other Mental Health Provider

C.I.T Officers



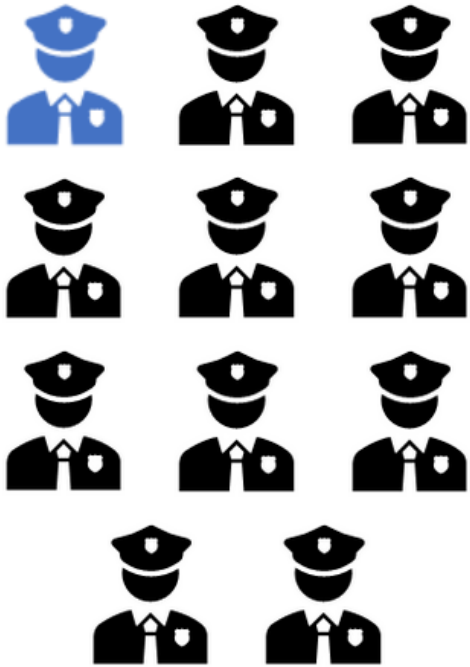
Non-C.I.T Officers



Elevate - Law Enforcement Liaison

Asking for Assistance - Hospital

9% of C.I.T Officers



20% of Non-C.I.T Officers

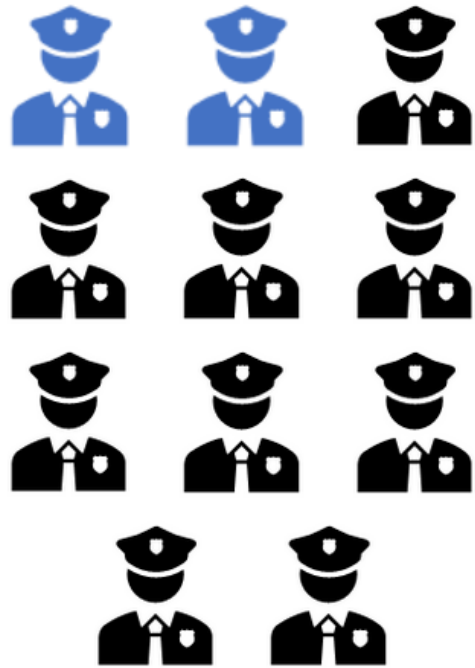


Elevate - Law Enforcement Liaison

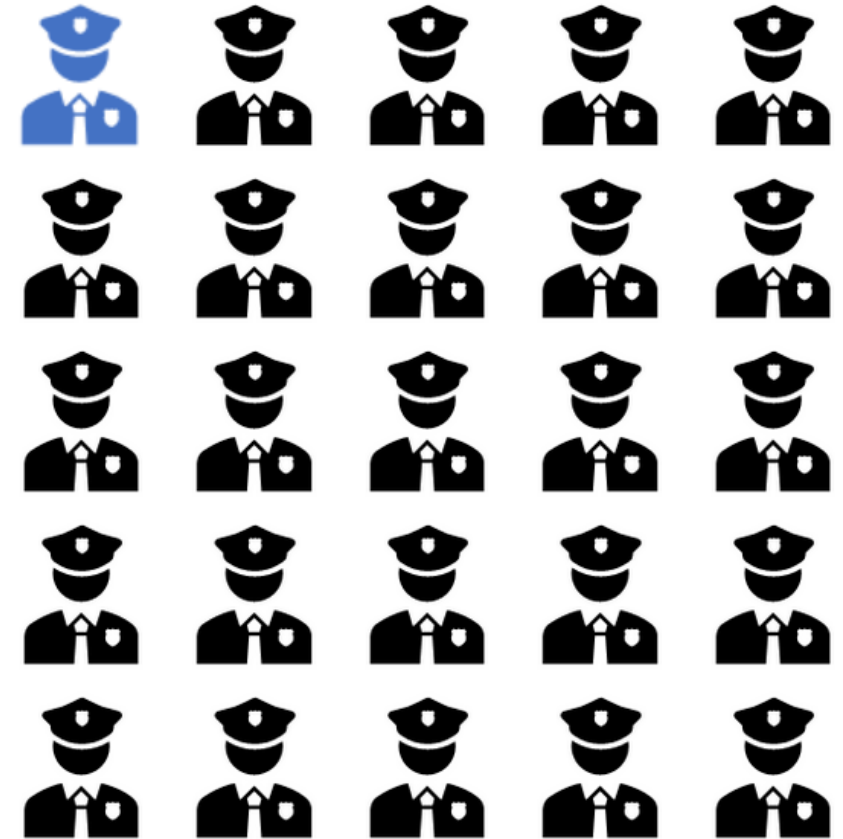


No Intervention/Not a Police Issue

18% of C.I.T Officers



4% of Non-C.I.T Officers



Elevate - Law Enforcement Liaison

Observation of Crisis Intervention Training (CIT)

Cultural Intervention Strategies

Cultural Consideration

Stress-levels of Police Officers

The Role of Police Officers



Interviews of Police Officers during Ride Alongs

Lack of support

Substance abuse

Mental health

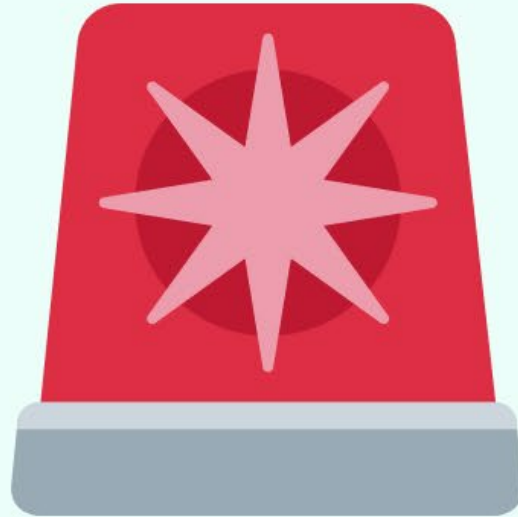
Elevate

Implementation

Current



CEDAR RAPIDS



IOWA CITY

Mobile Crisis Outreach

Community Crisis Line

GuideLink Center

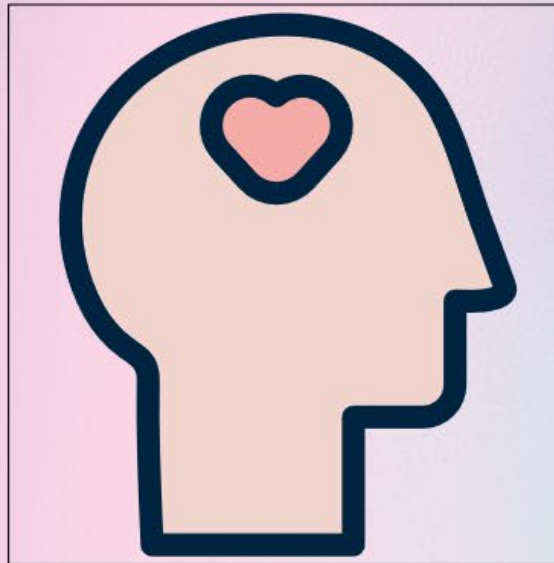


CONCLUSION

- Importance of CIT
- Direct and Open Lines of Communication
- Elevate Partnership



Next Steps





Thank you

...

Have any questions?