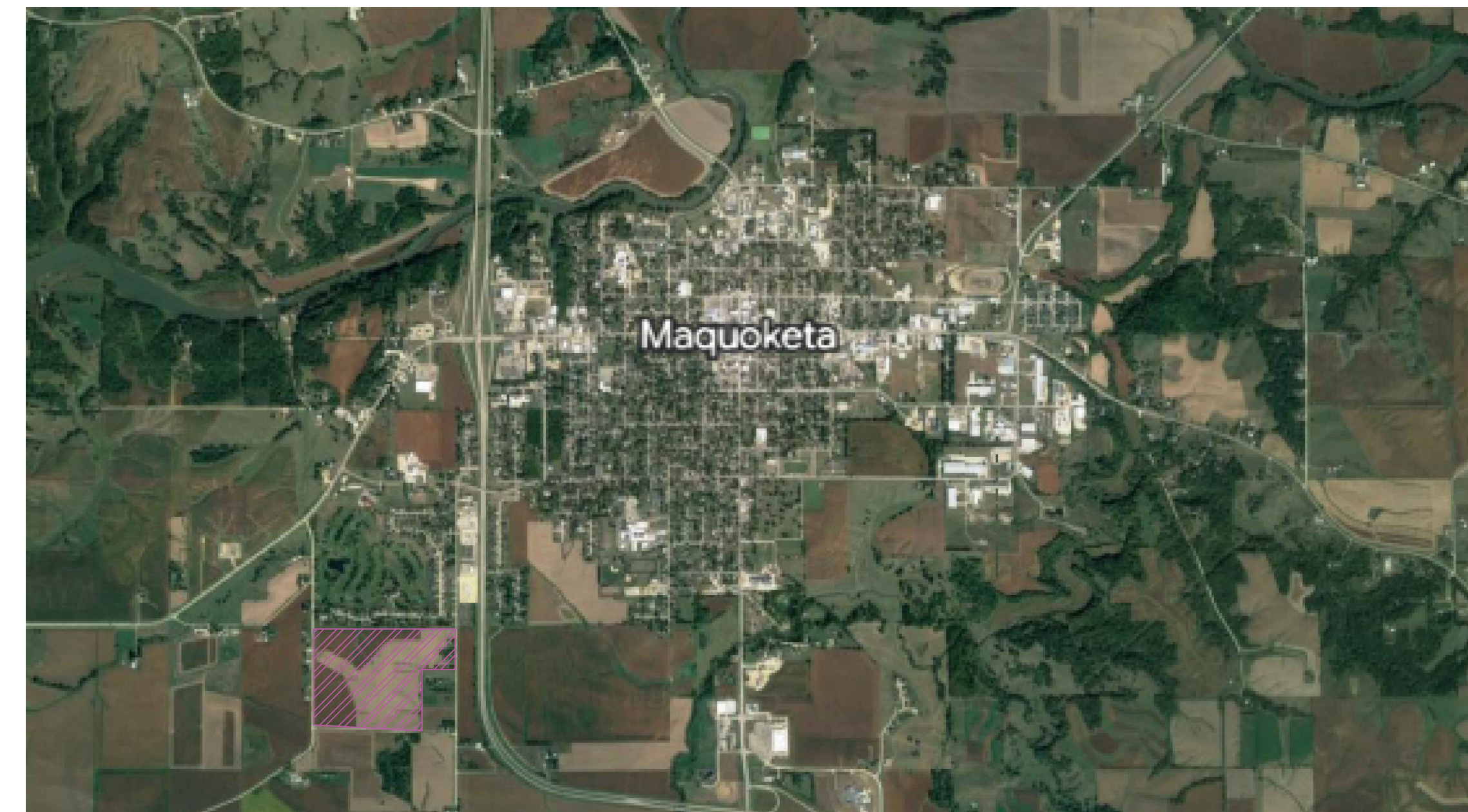


MAQUOKETA SUBDIVISION STEWART FAMILY FARMS

CITY OF MAQUOKETA
MAQUOKETA, IA 52060



THE PROJECT SITE IS SHOWN ABOVE, THE TOTAL AREA OF THE SITE IS 94 ACRES.

SHEET LIST TABLE	
SHEET NUMBER	SHEET TITLE
C100	COVER SHEET
C101	SITE PLAN
C102	RIGHT-OF-WAY CROSS SECTIONS
C103	WATER MAIN
C104	STORMWATER SEWER
C105	PHASE 1
C106	PHASE 1 PLAN & PROFILE
C107	TRAIL & GREENSPACE
C108	TRAIL CROSS-SECTION

OWNER REPRESENTATIVE

JOSHUA BOLDT
CITY OF MAQUOKETA
CITY MANAGER
201 EAST PLEASANT ST.

CONSULTANT REPRESENTATIVE

PATTERSON AND ASSOCIATES
UNIVERSITY OF IOWA
COLLEGE OF ENGINEERING
3100 SEAMANS CENTER,
IOWA CITY, IA 52240

5/3/2023

PROJECT: CEE: 4850
DATE: 5/3/2023
DRAWN BY: JRL
REVISION:

THE UNIVERSITY OF IOWA
CIVIL AND ENVIRONMENTAL ENGINEERING
4105 SEAMANS CENTER FOR THE
ENGINEERING ARTS AND SCIENCES
103 S CAPITOL ST
IOWA CITY, IOWA 52242
PHONE: 319.335.5647
FAX: 319.335.5660
EMAIL: civil-hawks@iowa.edu

IOWA
CIVIL & ENVIRONMENTAL
ENGINEERING

EDUCATIONAL - NOT
FOR CONSTRUCTION

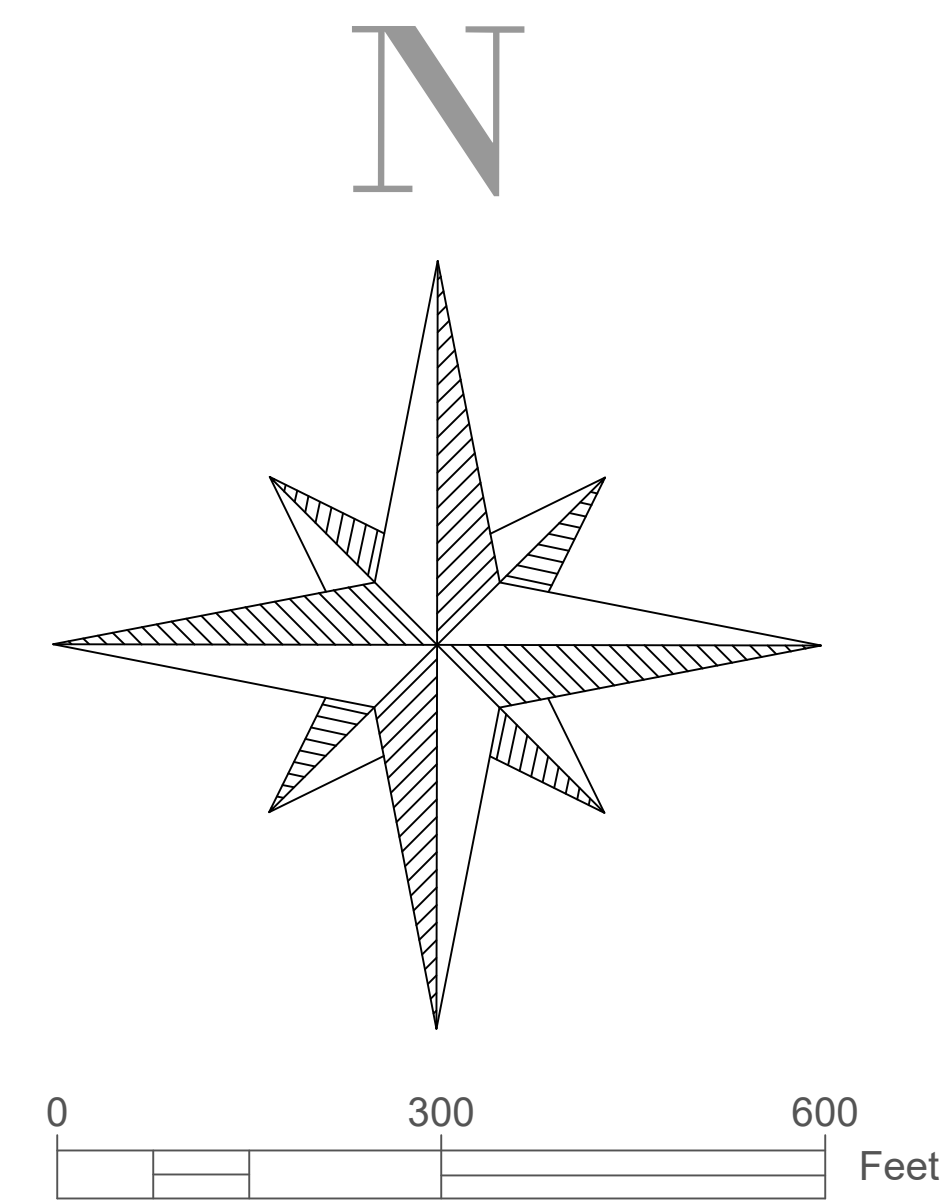
MAQUOKETA SUBDIVISION
MAQUOKETA IOWA






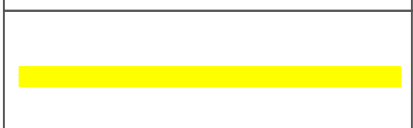
SHEET NAME

COVER
SHEET

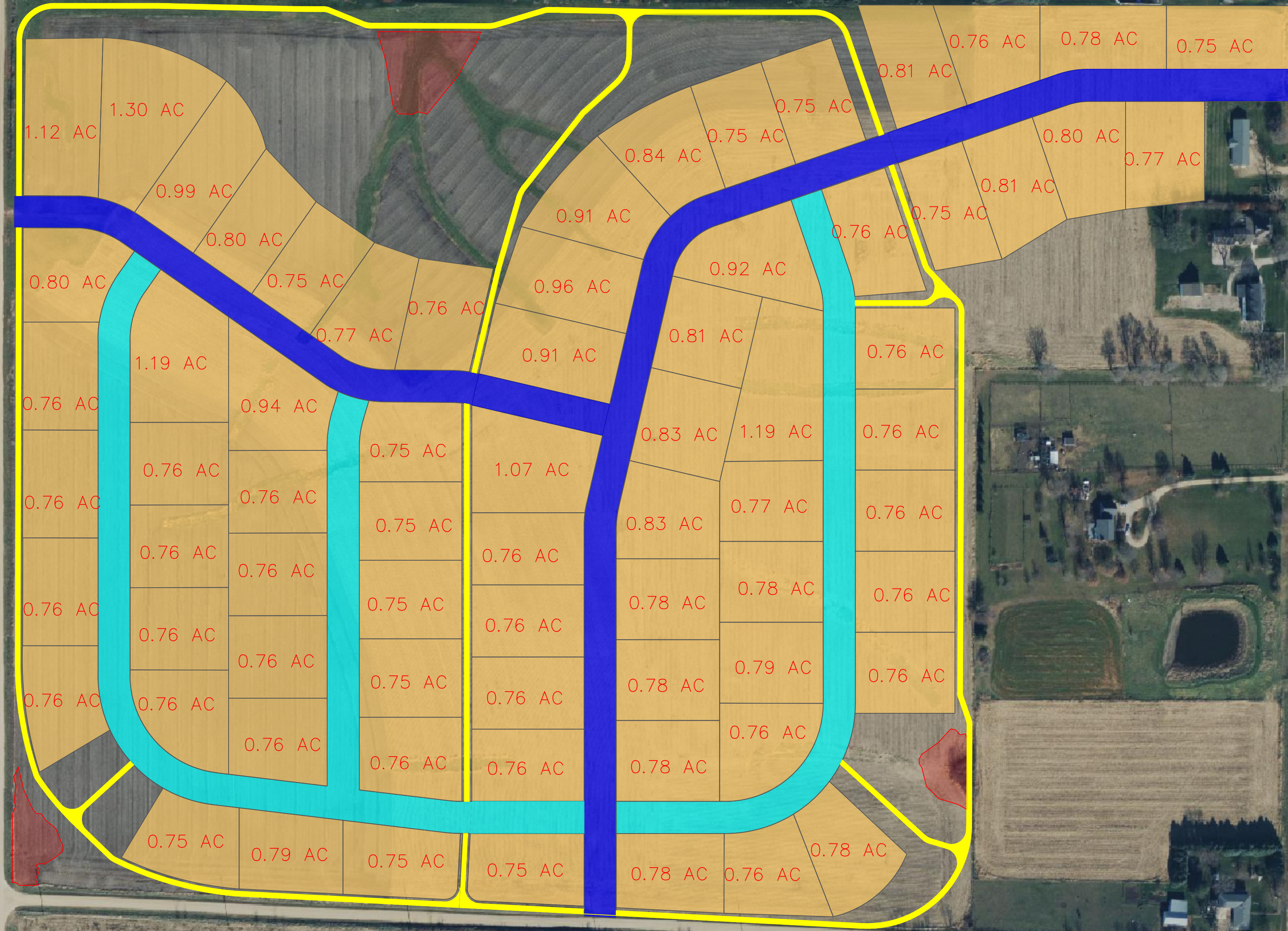
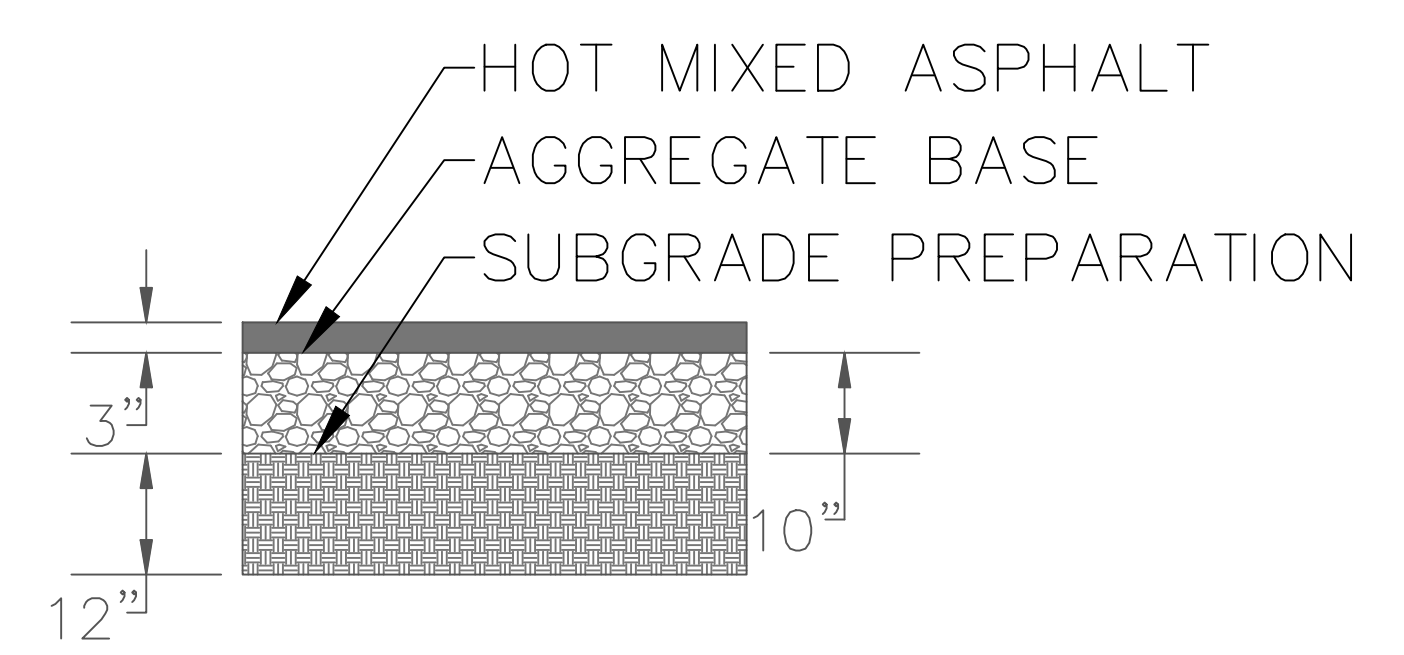
SHEET NO.

C100



	SINGLE FAMILY RESIDENTIAL
	COLLECTOR ROADWAY
	LOCAL ROADWAY
	STORM WATER RETENTION
	PROPERTY LINES
	PCC TRAIL WITH 5" DEPTH

COLLECTOR AND LOCAL STREET PAVEMENT CROSS-SECTION



PROJECT:	CEE: 4850
DATE :	5/3/2023
DRAWN BY:	JRL
REVISION:	

THE UNIVERSITY OF IOWA
 CIVIL AND ENVIRONMENTAL ENGINEERING
 4105 SEAMANS CENTER FOR THE
 ENGINEERING ARTS AND SCIENCES
 103 S CAPITOL ST
 IOWA CITY, IOWA 52242
 PHONE: 319.335.5647
 FAX: 319.335.5660
 EMAIL: civil-hawks@iowa.edu

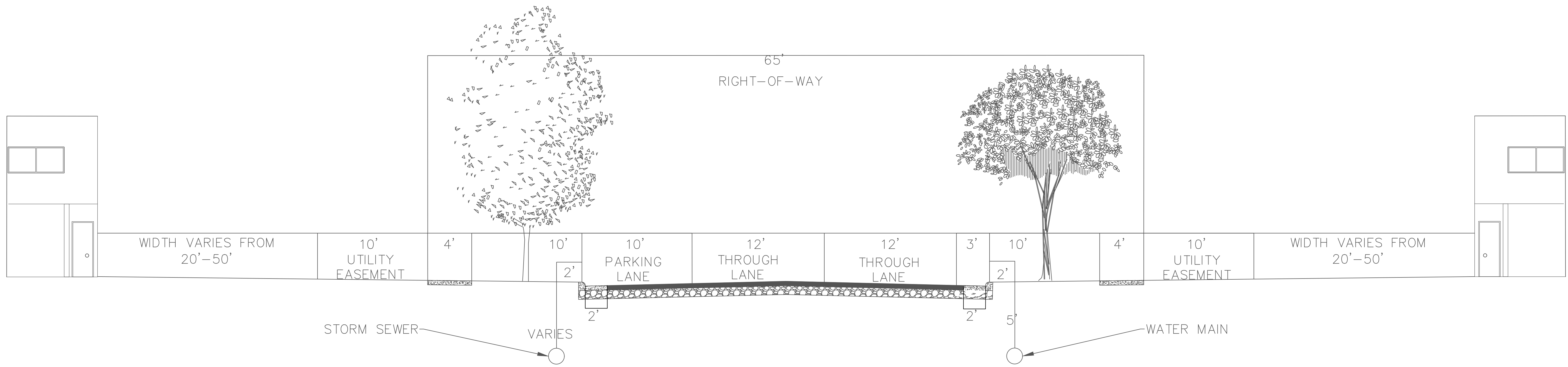


EDUCATIONAL - NOT FOR CONSTRUCTION

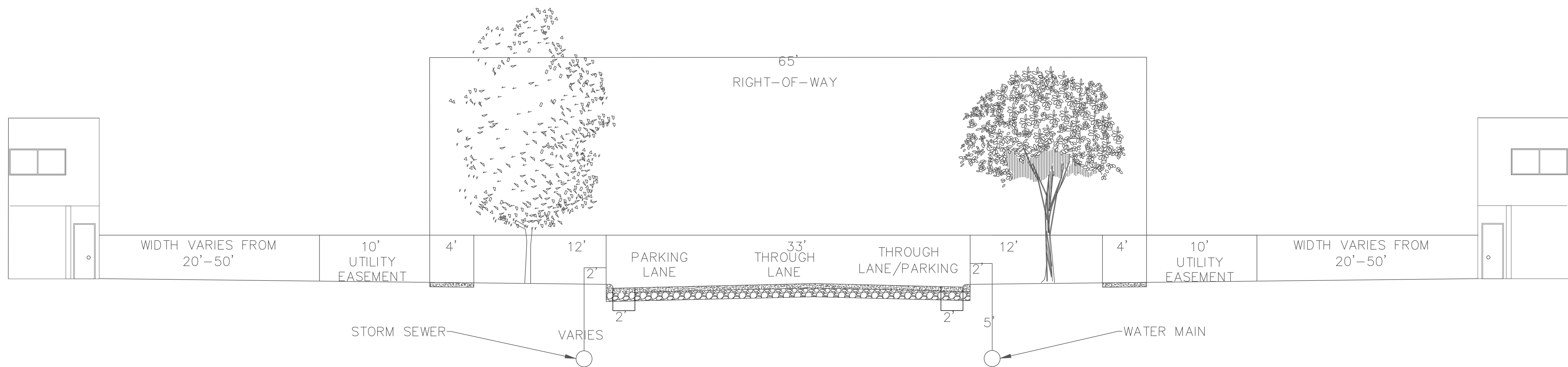
MAQUOKETA SUBDIVISION
 MAQUOKETA IOWA

SHEET NAME	SITE PLAN
SHEET NO.	C101

COLLECTOR STREET CROSS-SECTION



LOCAL STREET CROSS-SECTION



PROJECT:	CEE: 4850
DATE :	5/3/2023
DRAWN BY:	JRL
REVISION:	

THE UNIVERSITY OF IOWA
CIVIL AND ENVIRONMENTAL ENGINEERING
 4105 SEAMANS CENTER FOR THE
 ENGINEERING ARTS AND SCIENCES
 103 S CAPITOL ST
 IOWA CITY, IOWA 52242
 PHONE: 319.335.5647
 FAX: 319.335.5660
 EMAIL: civil-hawks@iowa.edu



EDUCATIONAL - NOT FOR CONSTRUCTION

MAQUOKETA SUBDIVISION

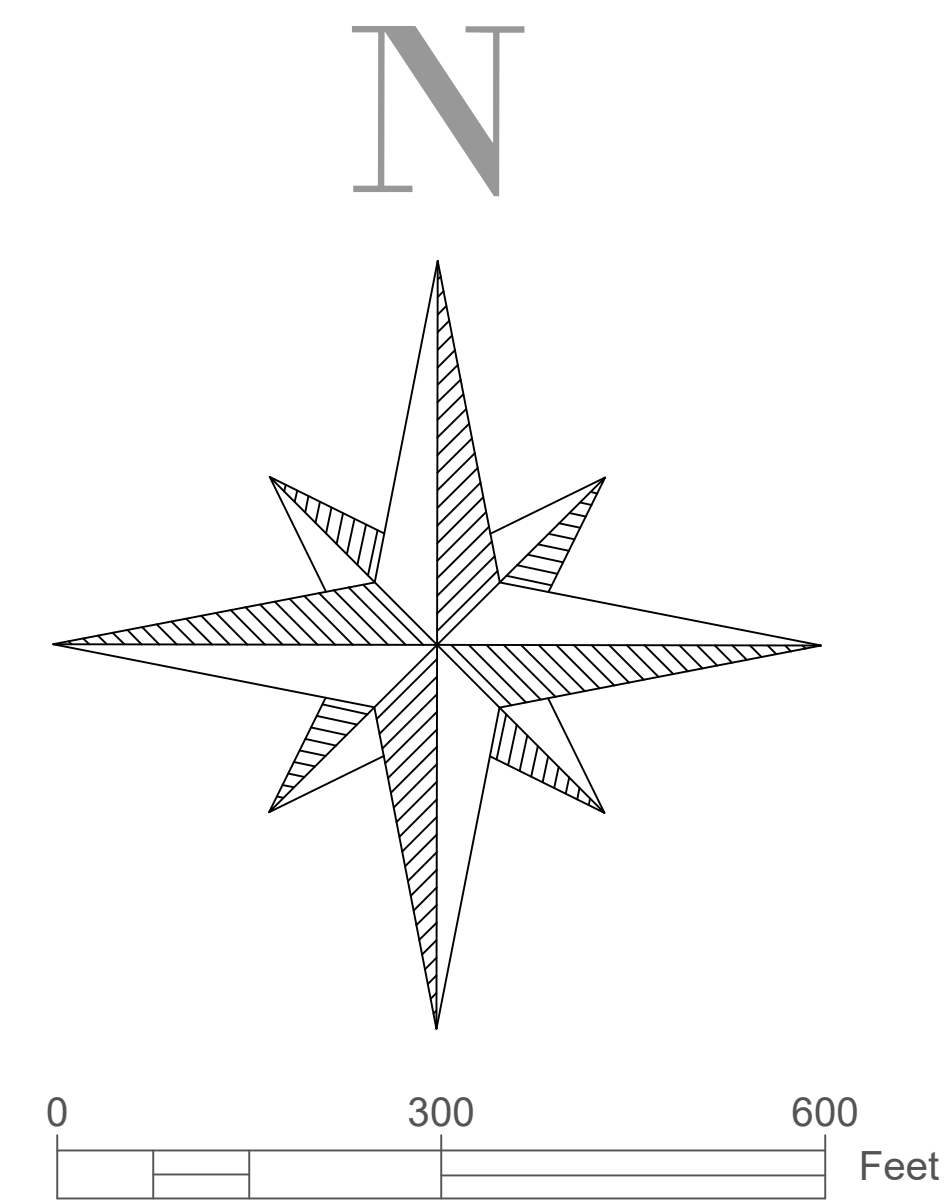
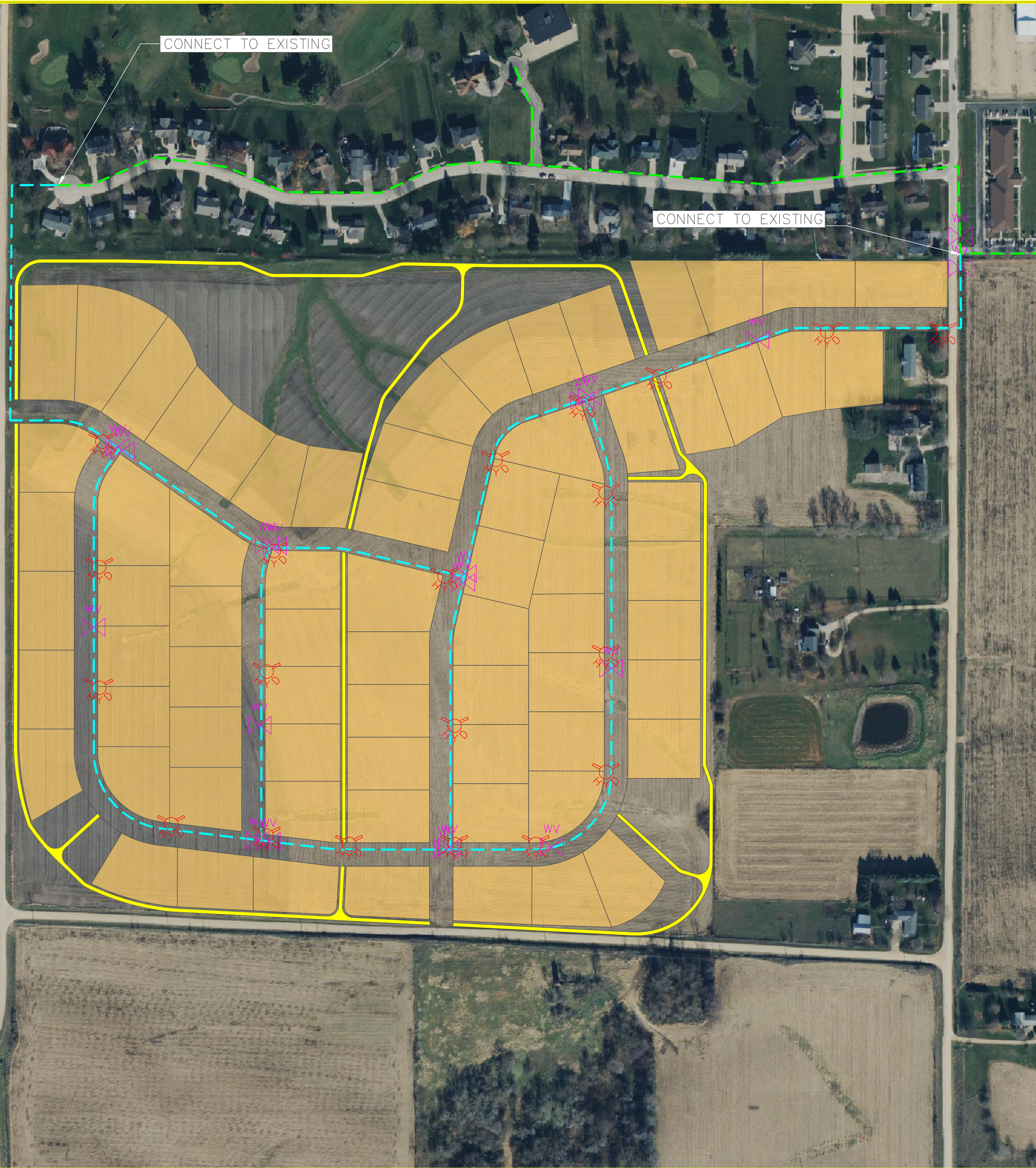
MAQUOKETA IOWA



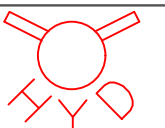
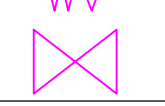
SHEET NAME

RIGHT-OF-WAY CROSS SECTIONS

SHEET NO.

C102



	10" EXISTING WATER MAIN
	10" PROPOSED WATER MAIN
	FIRE HYDRANT
	WATER VALVE

WATER MAIN QUANTITIES	
LENGTH OF 10" PIPE (LF)	9267
NUMBER OF VALVES	20
NUMBER OF VALVES	20

PROJECT: CEE: 4850
 DATE: 5/3/2023
 DRAWN BY: JRL
 REVISION:

THE UNIVERSITY OF IOWA
CIVIL AND ENVIRONMENTAL ENGINEERING
 4105 SEAMANS CENTER FOR THE
 ENGINEERING ARTS AND SCIENCES
 103 S CAPITOL ST
 IOWA CITY, IOWA 52242
 PHONE: 319.335.5647
 FAX: 319.335.5660
 EMAIL: civil-hawks@iowa.edu



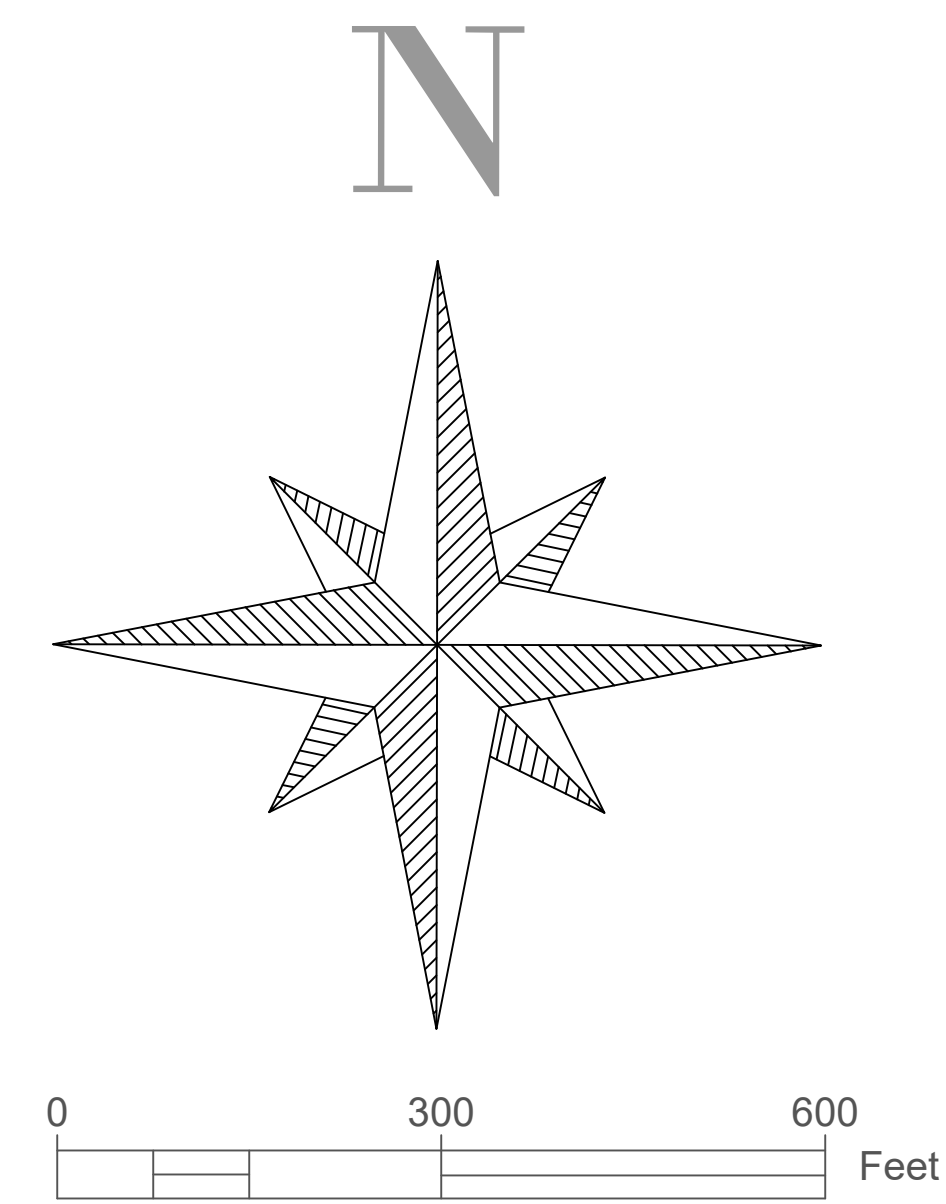
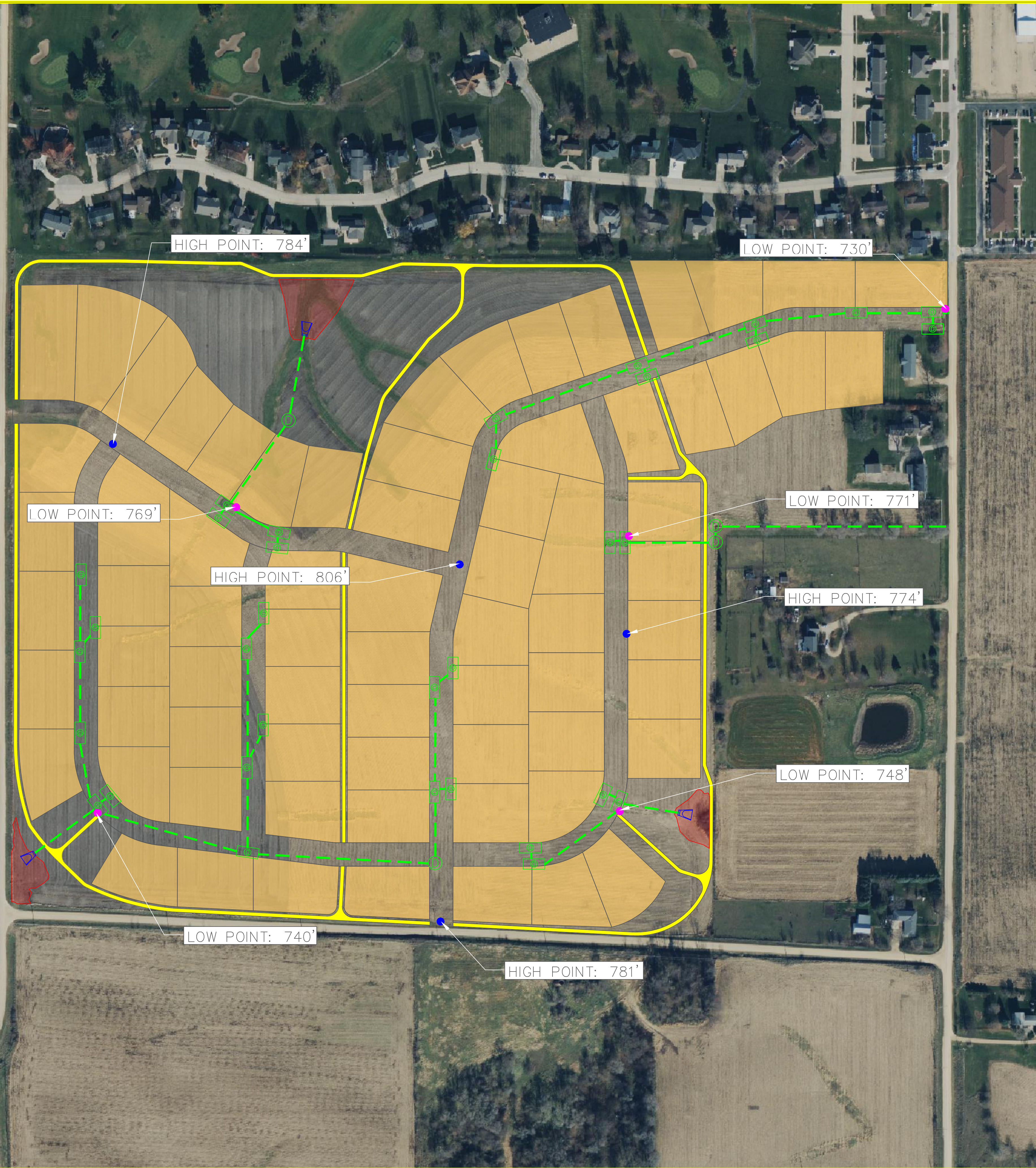
EDUCATIONAL - NOT FOR CONSTRUCTION

MAQUOKETA SUBDIVISION

MAQUOKETA IOWA

SHEET NAME
 WATER MAIN

SHEET NO.
C103



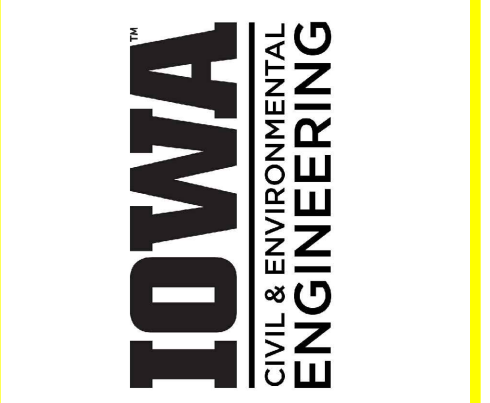
	STORM OUTLET STRUCTURE
	STORM MANHOLE
	PROPOSED 15" STORM SEWER
	STORM INTAKE
	DETENTION POND

STORM SEWER QUANTITIES	
LENGTH OF 15" PIPE (LF)	7401
STORM MANHOLES	4
STORM INTAKES	34

VOLUME REQUIREMENTS	
NORTH BASIN (CF)	4180
SOUTHEAST BASIN (CF)	3510
SOUTHWEST BASIN (CF)	7230

PROJECT:	CEE: 4850
DATE :	5/3/2023
DRAWN BY:	JRL
REVISION:	

THE UNIVERSITY OF IOWA
CIVIL AND ENVIRONMENTAL ENGINEERING
 4105 SEAMANS CENTER FOR THE
 ENGINEERING ARTS AND SCIENCES
 103 S CAPITOL ST
 IOWA CITY, IOWA 52242
 PHONE: 319.335.5647
 FAX: 319.335.5660
 EMAIL: civil-hawks@iowa.edu

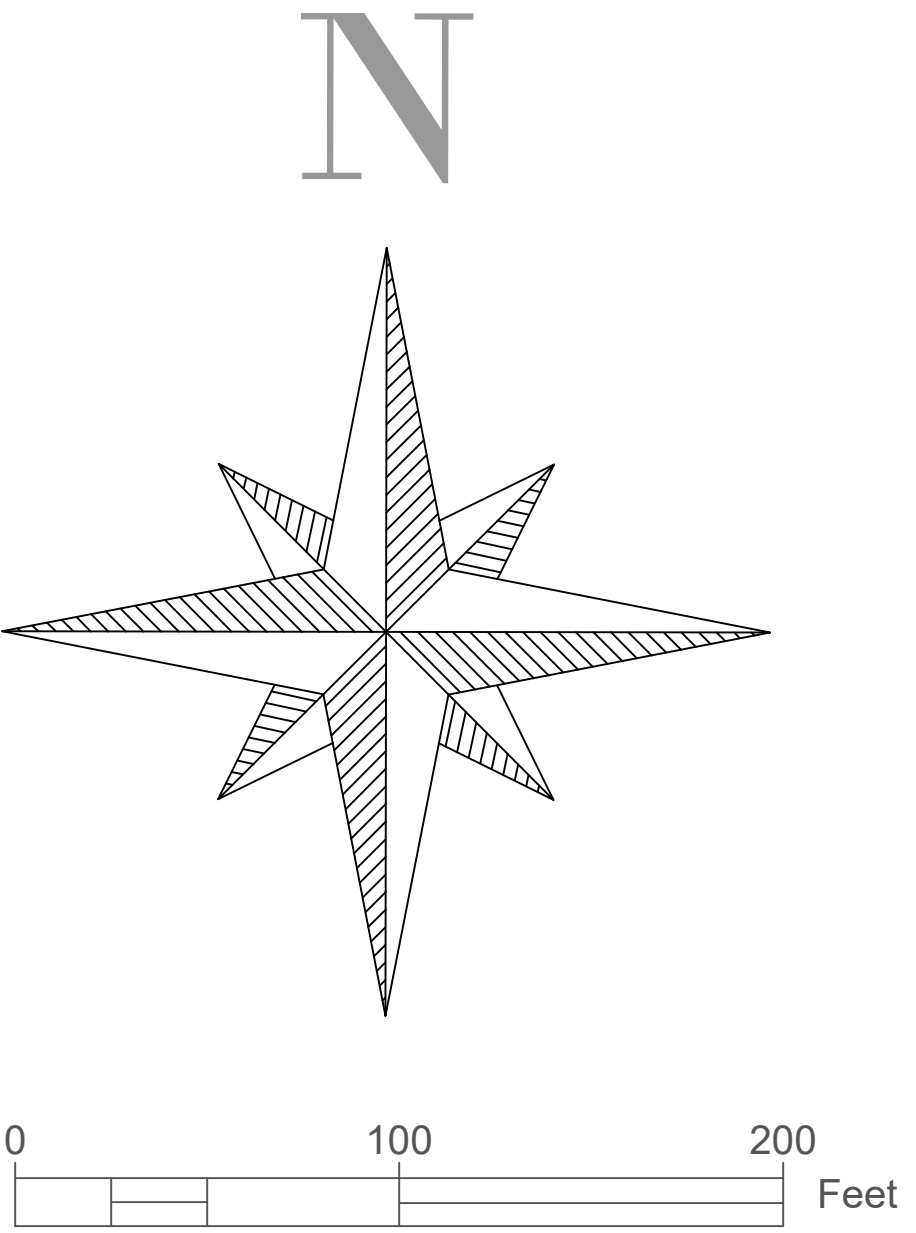
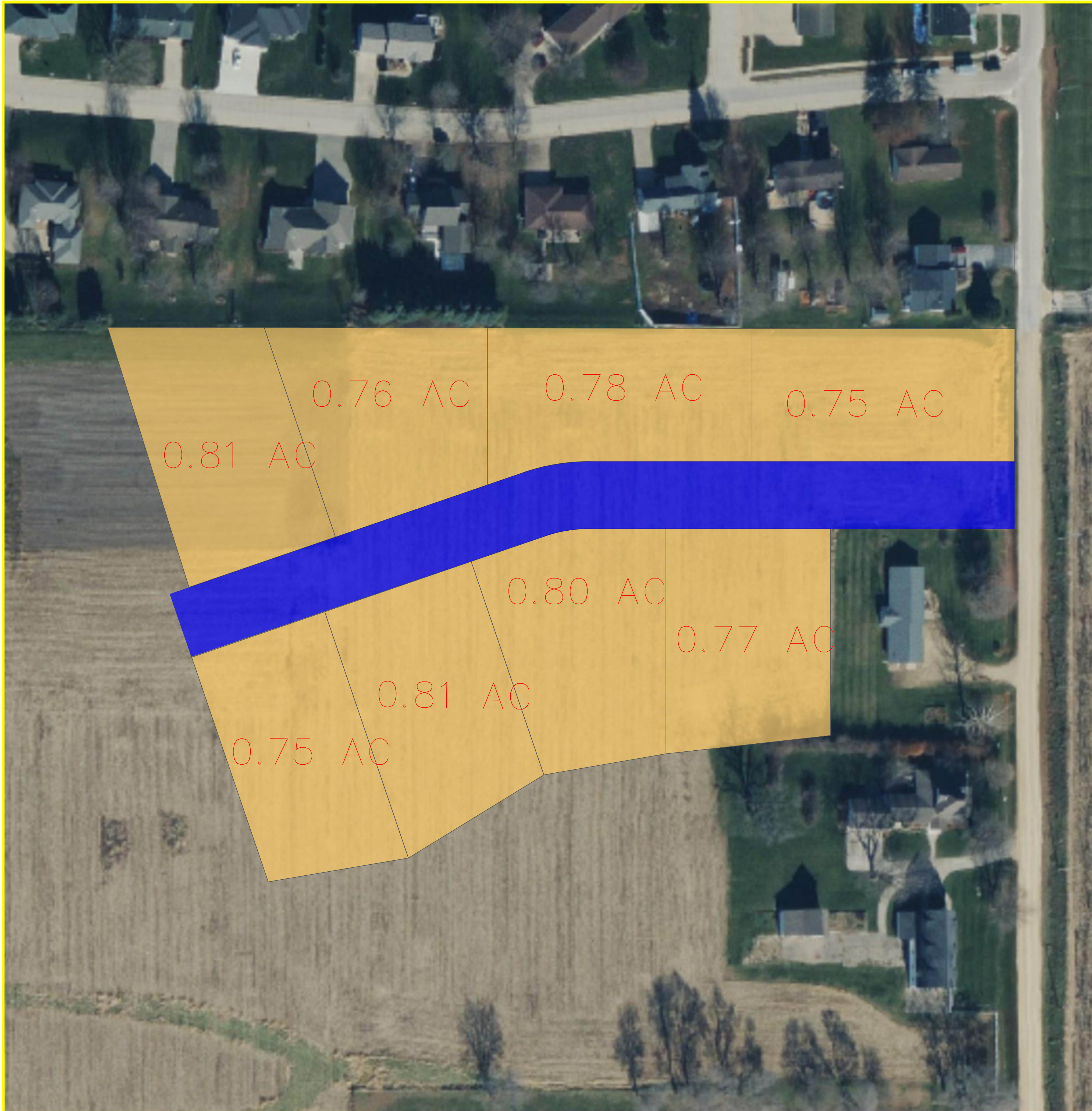


EDUCATIONAL - NOT FOR CONSTRUCTION

MAQUOKETA SUBDIVISION
 MAQUOKETA IOWA

SHEET NAME
 STORMWATER SEWER

SHEET NO.
C104



	SINGLE FAMILY RESIDENTIAL
	COLLECTOR ROADWAY
	PROPERTY LINES

PROJECT:	CEE: 4850
DATE :	5/3/2023
DRAWN BY:	JRL
REVISION:	

THE UNIVERSITY OF IOWA
CIVIL AND ENVIRONMENTAL ENGINEERING
 4105 SEAMANS CENTER FOR THE
 ENGINEERING ARTS AND SCIENCES
 103 S CAPITOL ST
 IOWA CITY, IOWA 52242
 PHONE: 319.335.5647
 FAX: 319.335.5660
 EMAIL: civil-hawks@iowa.edu



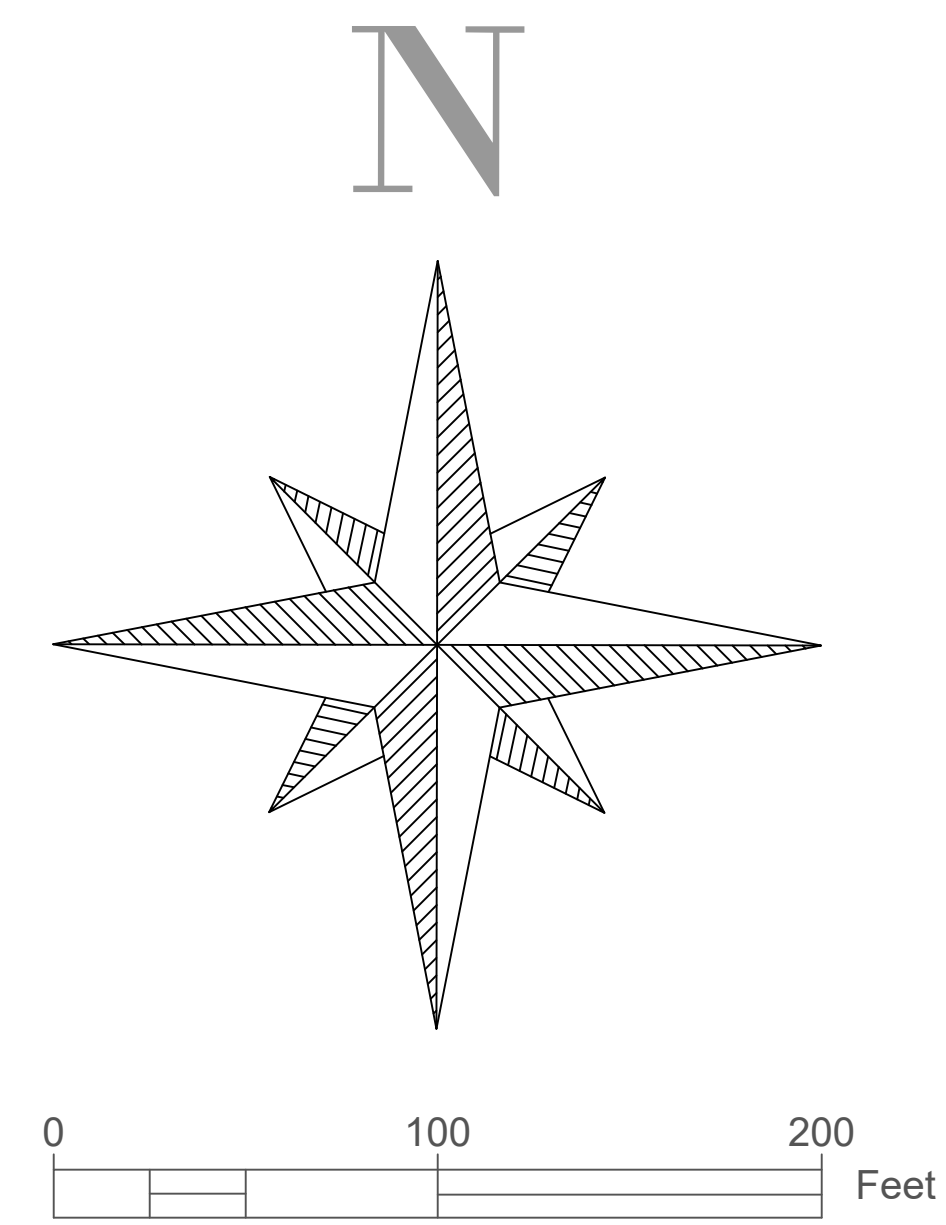
EDUCATIONAL - NOT FOR CONSTRUCTION

MAQUOKETA SUBDIVISION

MAQUOKETA IOWA

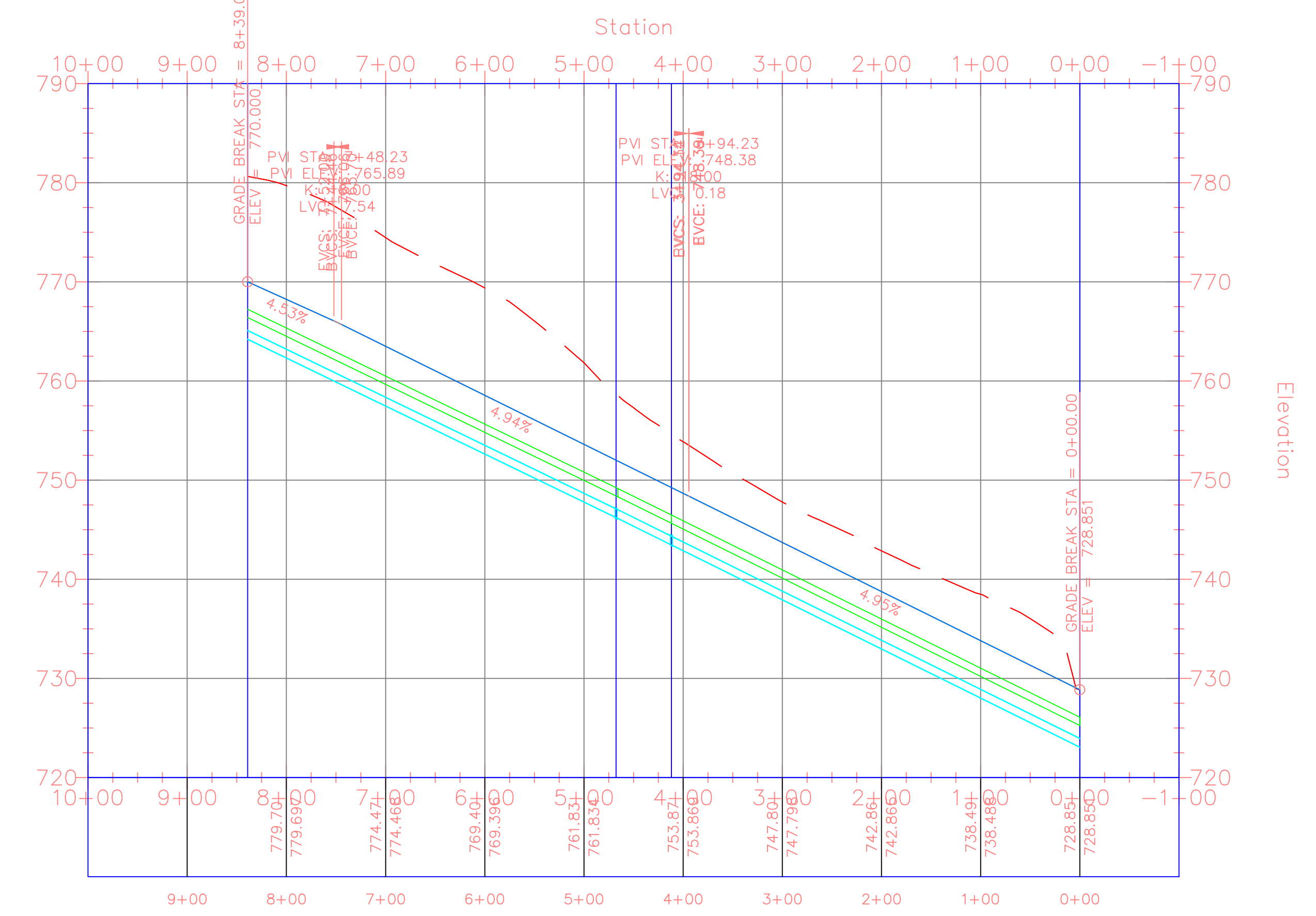
SHEET NAME
PHASE 1

SHEET NO.
C105



	10" PROPOSED WATER MAIN
	FIRE HYDRANT
	WATER VALVE
	PROPOSED 15" STORM SEWER
	STORM INTAKE

Phase 1 Roadway PROFILE



PROJECT:	CEE: 4850
DATE :	5/3/2023
DRAWN BY:	JRL
REVISION:	

THE UNIVERSITY OF IOWA
CIVIL AND ENVIRONMENTAL ENGINEERING
 4105 SEAMANS CENTER FOR THE
 ENGINEERING ARTS AND SCIENCES
 103 S CAPITOL ST
 IOWA CITY, IOWA 52242
 PHONE: 319.335.5647
 FAX: 319.335.5660
 EMAIL: civil-hawks@iowa.edu



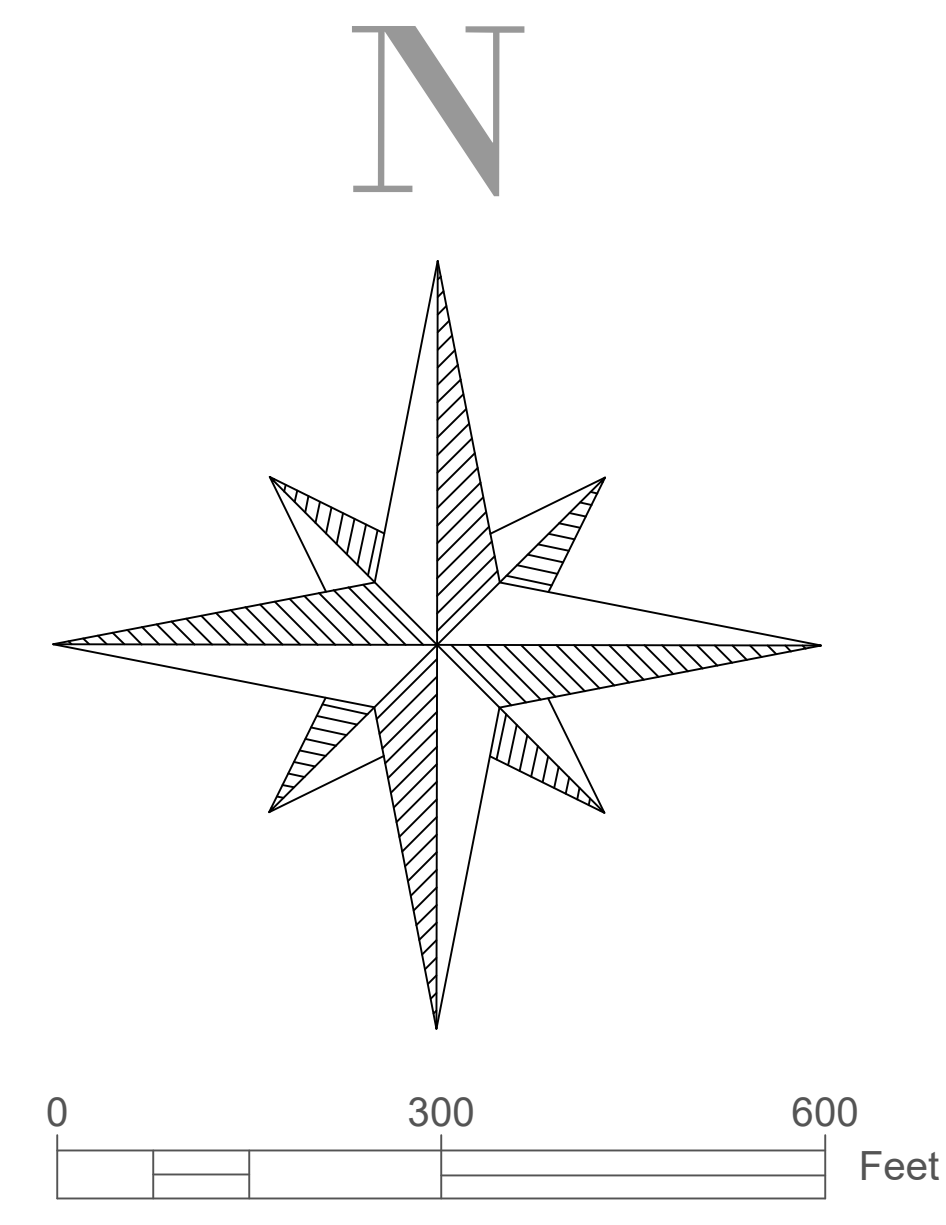
EDUCATIONAL - NOT FOR CONSTRUCTION

MAQUOKETA SUBDIVISION

MAQUOKETA IOWA

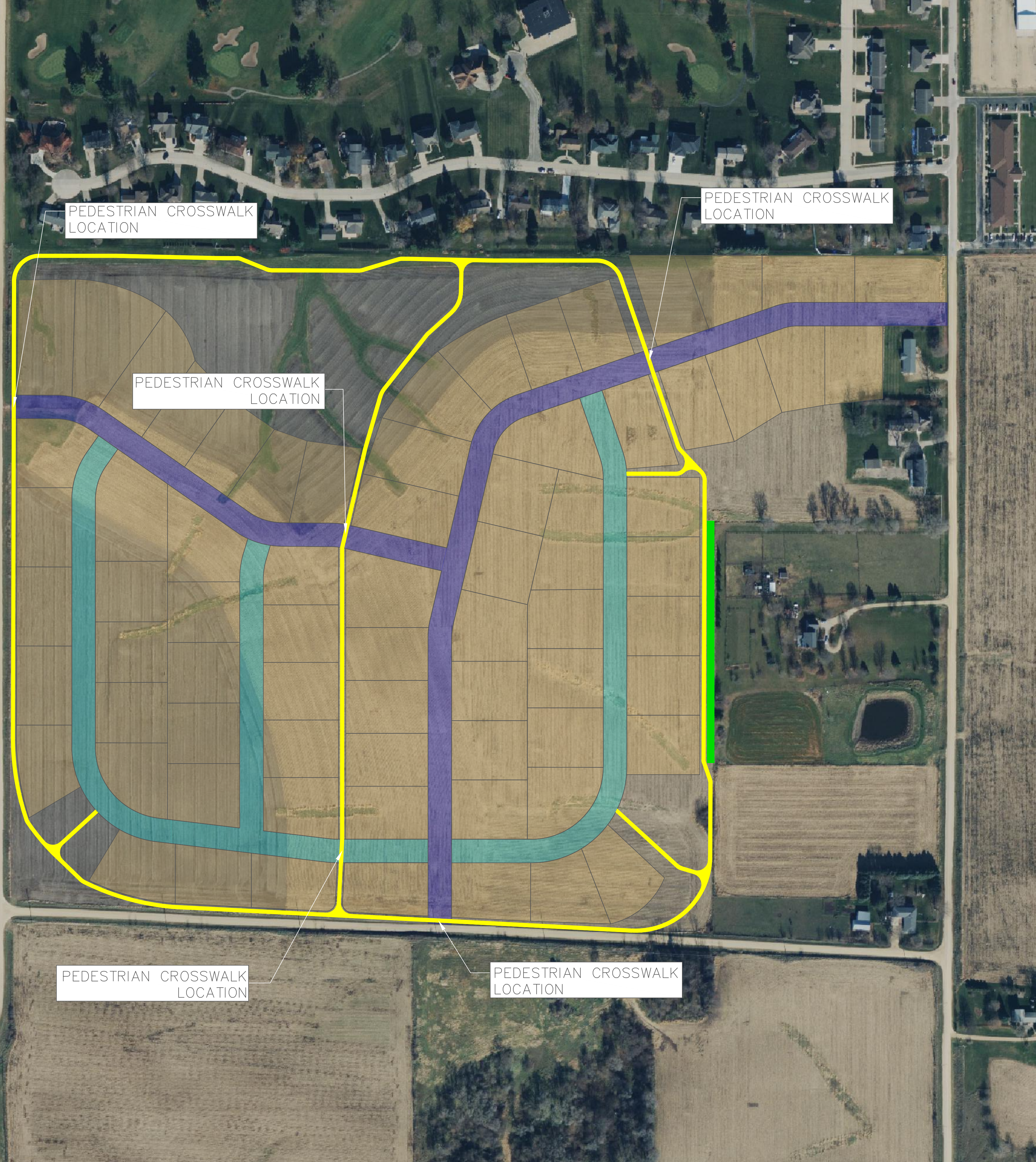
SHEET NAME
 PHASE 1
 PLAN & PROFILE

SHEET NO.
C106



	10" WIDE PCC TRAIL
	TREE LINE

PCC TRAIL QUANTITIES	
AREA OF 5" PCC (SF)	93942



PROJECT:	CEE: 4850
DATE :	5/3/2023
DRAWN BY:	JRL
REVISION:	

THE UNIVERSITY OF IOWA
CIVIL AND ENVIRONMENTAL ENGINEERING
 4105 SEAMANS CENTER FOR THE
 ENGINEERING ARTS AND SCIENCES
 103 S CAPITOL ST
 IOWA CITY, IOWA 52242
 PHONE: 319.335.5647
 FAX: 319.335.5660
 EMAIL: civil-hawks@iowa.edu



EDUCATIONAL - NOT FOR CONSTRUCTION

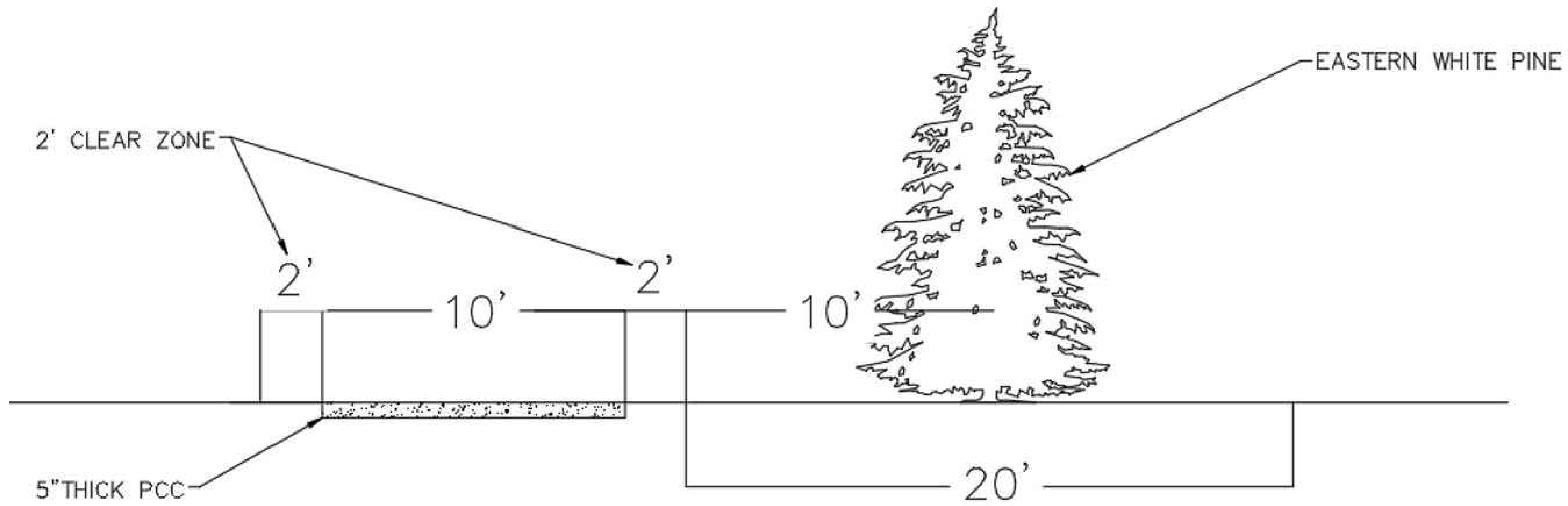
MAQUOKETA SUBDIVISION

MAQUOKETA IOWA

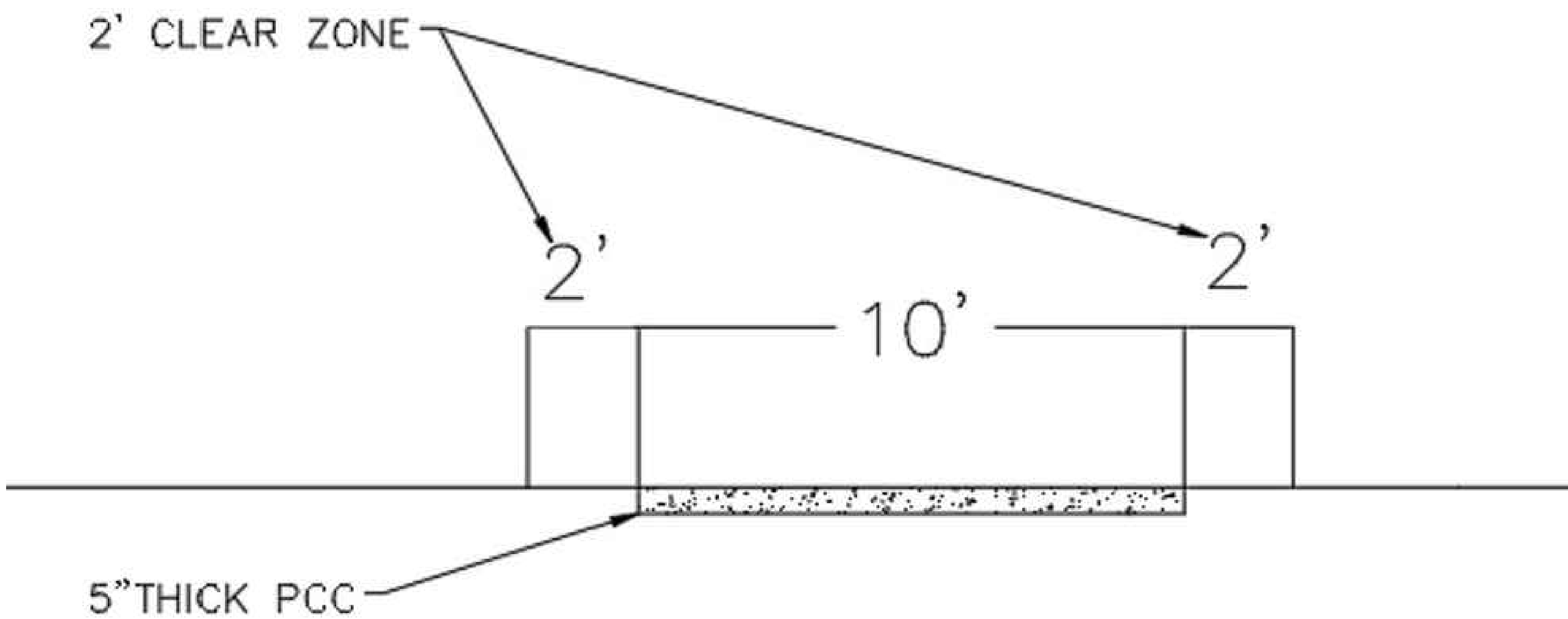
SHEET NAME
TRAIL & GREENSPACE

SHEET NO.
C107

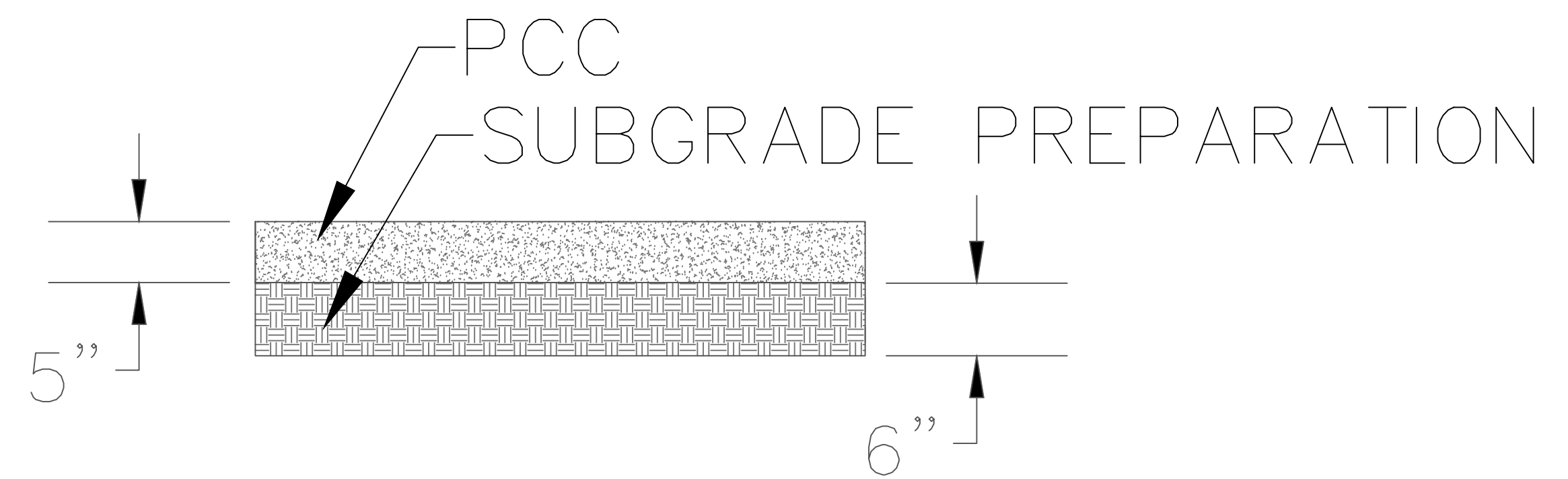
TRAIL WITH TREE LINE BUFFER



TYPICAL TRAIL CROSS-SECTION



TRAIL PAVEMENT CROSS-SECTION



PROJECT:	CEE: 4850
DATE :	5/3/2023
DRAWN BY:	JRL
REVISION:	

THE UNIVERSITY OF IOWA
 CIVIL AND ENVIRONMENTAL ENGINEERING
 4105 SEAMANS CENTER FOR THE
 ENGINEERING ARTS AND SCIENCES
 103 S CAPITOL ST
 IOWA CITY, IOWA 52242
 PHONE: 319.335.5647
 FAX: 319.335.5660
 EMAIL: civil-hawks@iowa.edu



EDUCATIONAL - NOT FOR CONSTRUCTION

MAQUOKETA SUBDIVISION

MAQUOKETA IOWA

SHEET NAME
 TRAIL CROSS-SECTION

SHEET NO.
C108