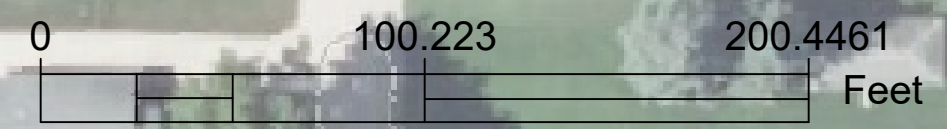
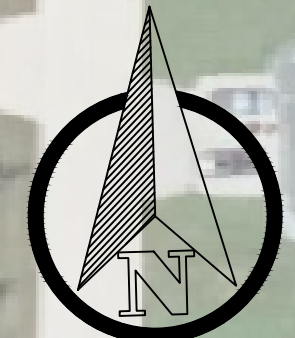


Vicinity Map



PROJECT: CEE: 4850
 DATE: 12/18/2024
 DRAWN BY: UNIVERSITY OF IOWA
 REVISION:

THE UNIVERSITY OF IOWA
CIVIL AND ENVIRONMENTAL ENGINEERING
 4105 SEAMANS CENTER FOR THE
 ENGINEERING ARTS AND SCIENCES
 103 S CAPITOL ST
 IOWA CITY, IOWA 52242
 PHONE: 319.335.5647
 FAX: 319.335.5660
 EMAIL: civil-hawks@iowa.edu

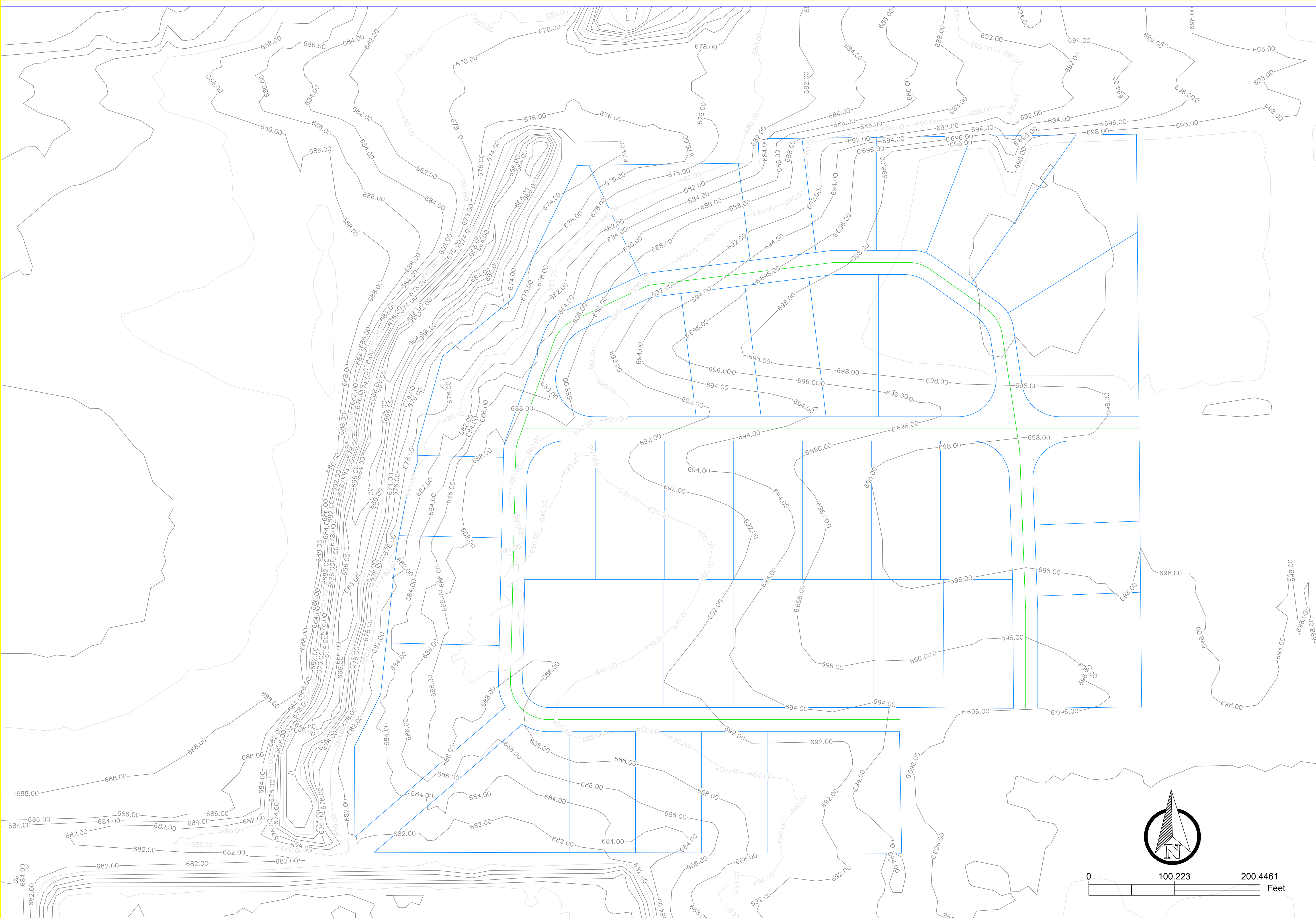
CEE Logo BW - no text.tif

EDUCATIONAL - NOT FOR CONSTRUCTION

DEERY PROPERTY SUBDIVISION
 609 W MT. PLEASANT ST
 WEST BURLINGTON, IA

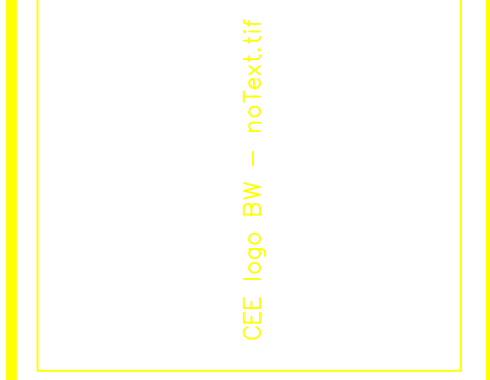
SHEET NAME
 PROJECT MAP

SHEET NO.
01



PROJECT: CEE:4850
 DATE: 12/18/2024
 DRAWN BY: UNIVERSITY OF IOWA
 REVISION:

THE UNIVERSITY OF IOWA
CIVIL AND ENVIRONMENTAL ENGINEERING
 4105 SEAMANS CENTER FOR THE
 ENGINEERING ARTS AND SCIENCES
 103 S CAPITOL ST
 IOWA CITY, IOWA 52242
 PHONE: 319.335.5647
 FAX: 319.335.5660
 EMAIL: civil-howks@uiowa.edu



EDUCATIONAL - NOT FOR CONSTRUCTION

DEERY PROPERTY SUBDIVISION
 609 W MT. PLEASANT ST
 WEST BURLINGTON, IA

SHEET NAME
 EXISTING
 CONDITIONS

SHEET NO.
02

PROJECT: CEE: 4850
DATE: 12/18/2024
DRAWN BY: UNIVERSITY OF IOWA
REVISION:

THE UNIVERSITY OF IOWA
CIVIL AND ENVIRONMENTAL ENGINEERING
4105 SEAMANS CENTER FOR THE
ENGINEERING ARTS AND SCIENCES
103 S CAPITOL ST
IOWA CITY, IOWA 52242
PHONE: 319.335.5647
FAX: 319.335.5660
EMAIL: civil-hawks@iowa.edu

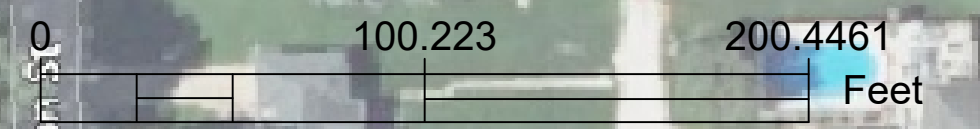
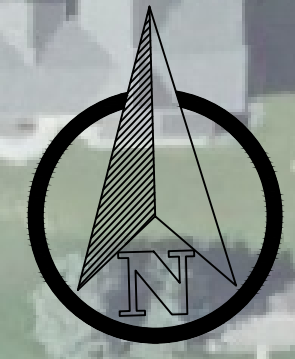
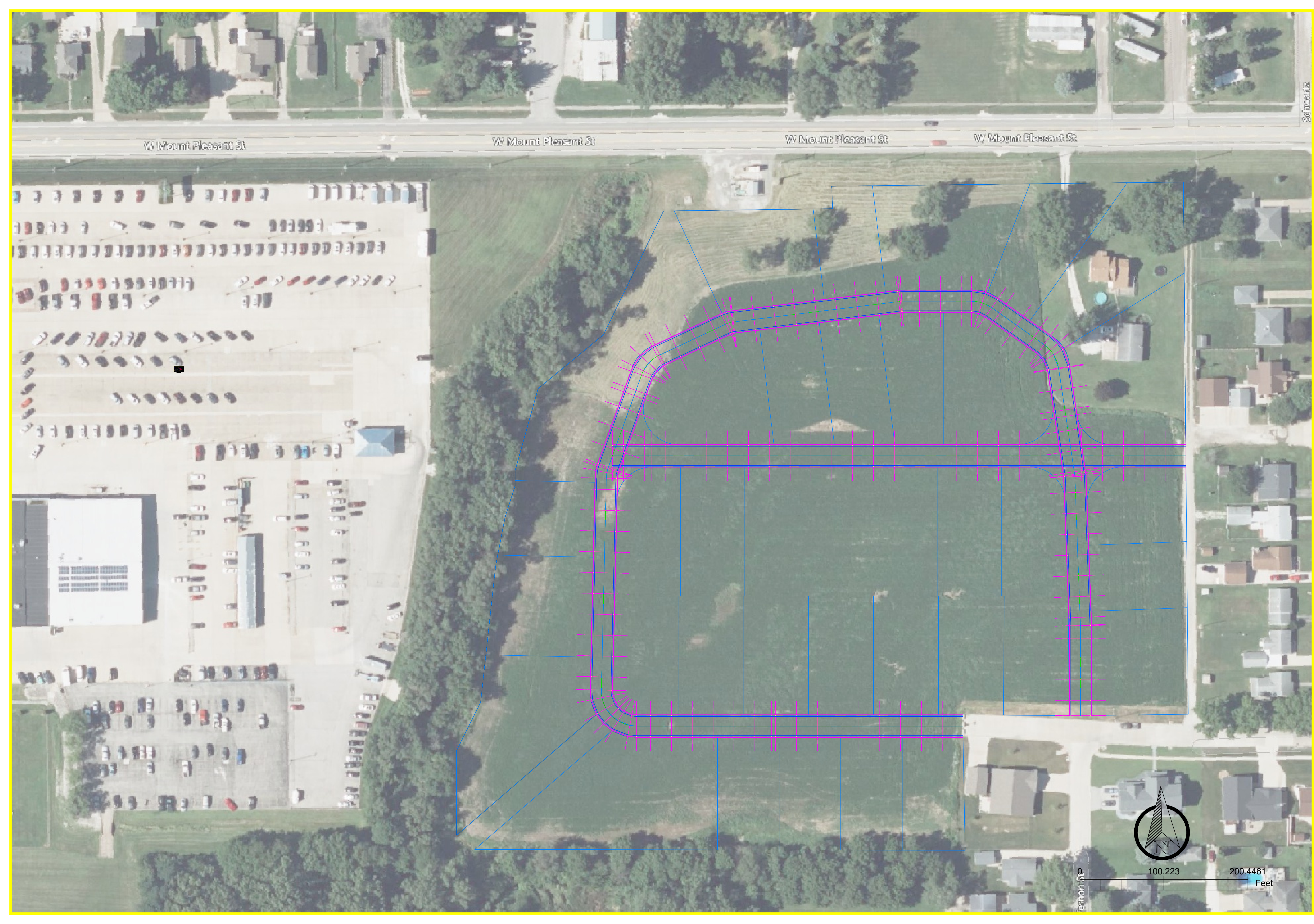
CEE Logo BW - no text.tif




EDUCATIONAL - NOT FOR CONSTRUCTION

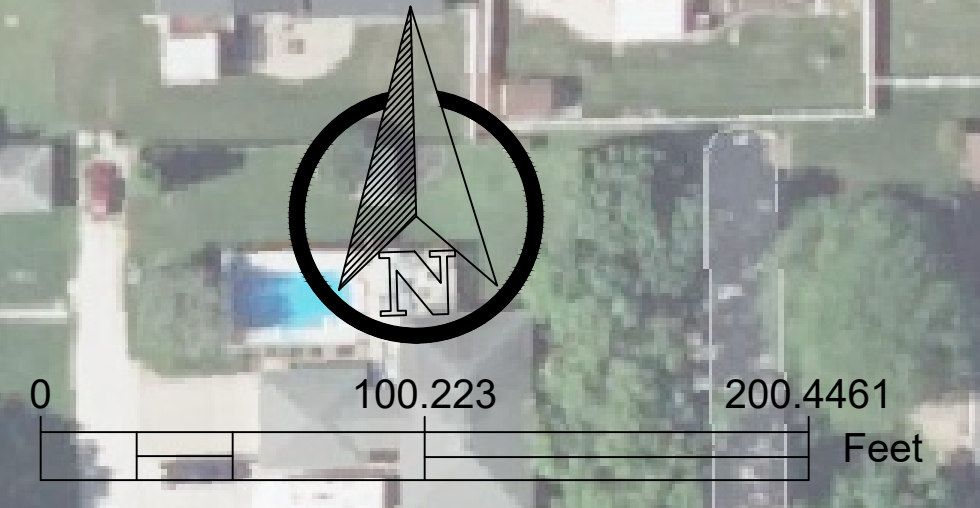
DEERY PROPERTY SUBDIVISION
609 W MT. PLEASANT ST
WEST BURLINGTON, IA

SHEET NAME
GEOMETRIC PLAN

SHEET NO.
03



 Storm
 Sanitary
 Water Main



PROJECT:	CEE: 4850
DATE :	12/18/2024
DRAWN BY:	UNIVERSITY OF IOWA
REVISION:	

THE UNIVERSITY OF IOWA
CIVIL AND ENVIRONMENTAL ENGINEERING
 4105 SEAMANS CENTER FOR THE
 ENGINEERING ARTS AND SCIENCES
 103 S CAPITOL ST
 IOWA CITY, IOWA 52242
 PHONE: 319.335.5647
 FAX: 319.335.5660
 EMAIL: civil-hawks@iowa.edu

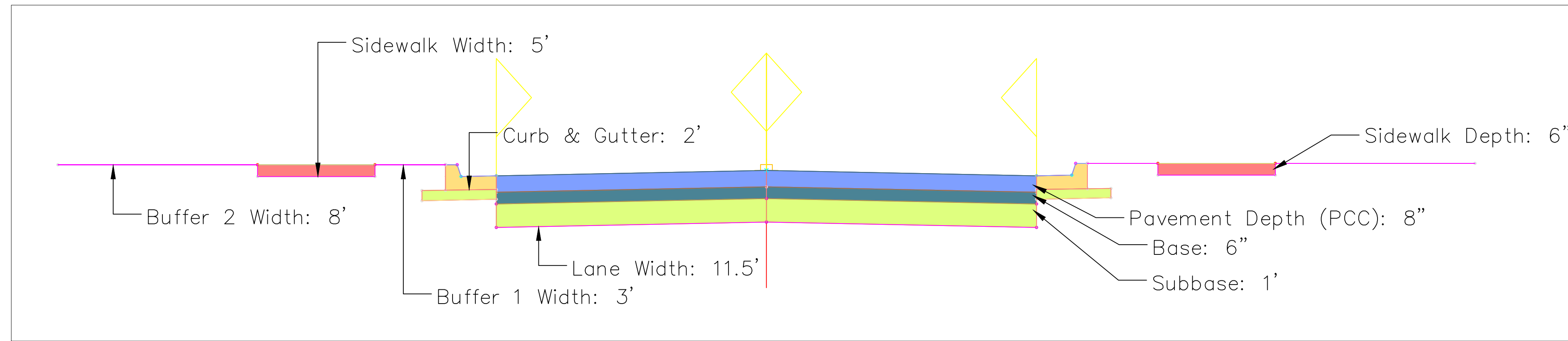
CEE logo BW - no text.tif

EDUCATIONAL - NOT FOR CONSTRUCTION

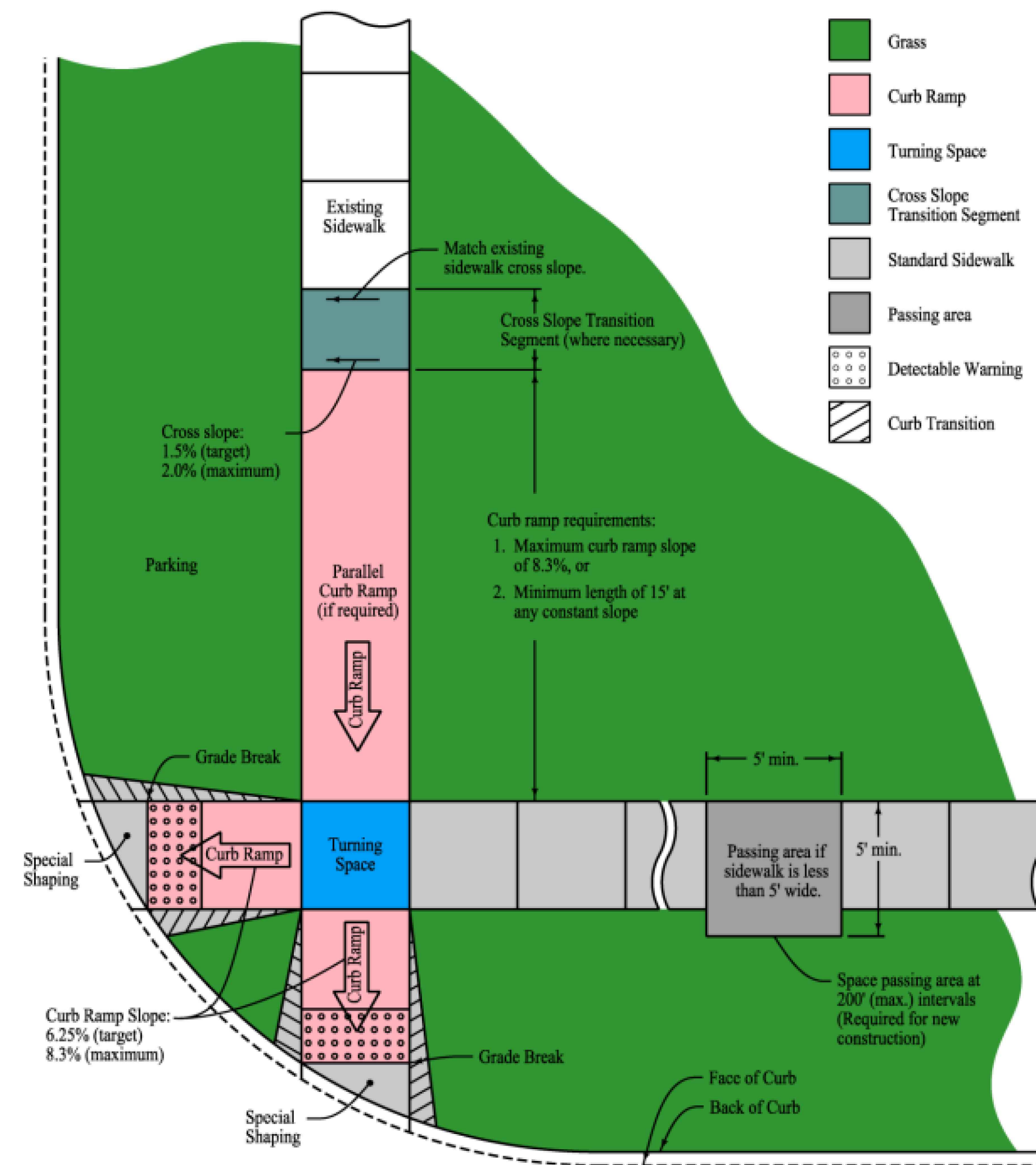
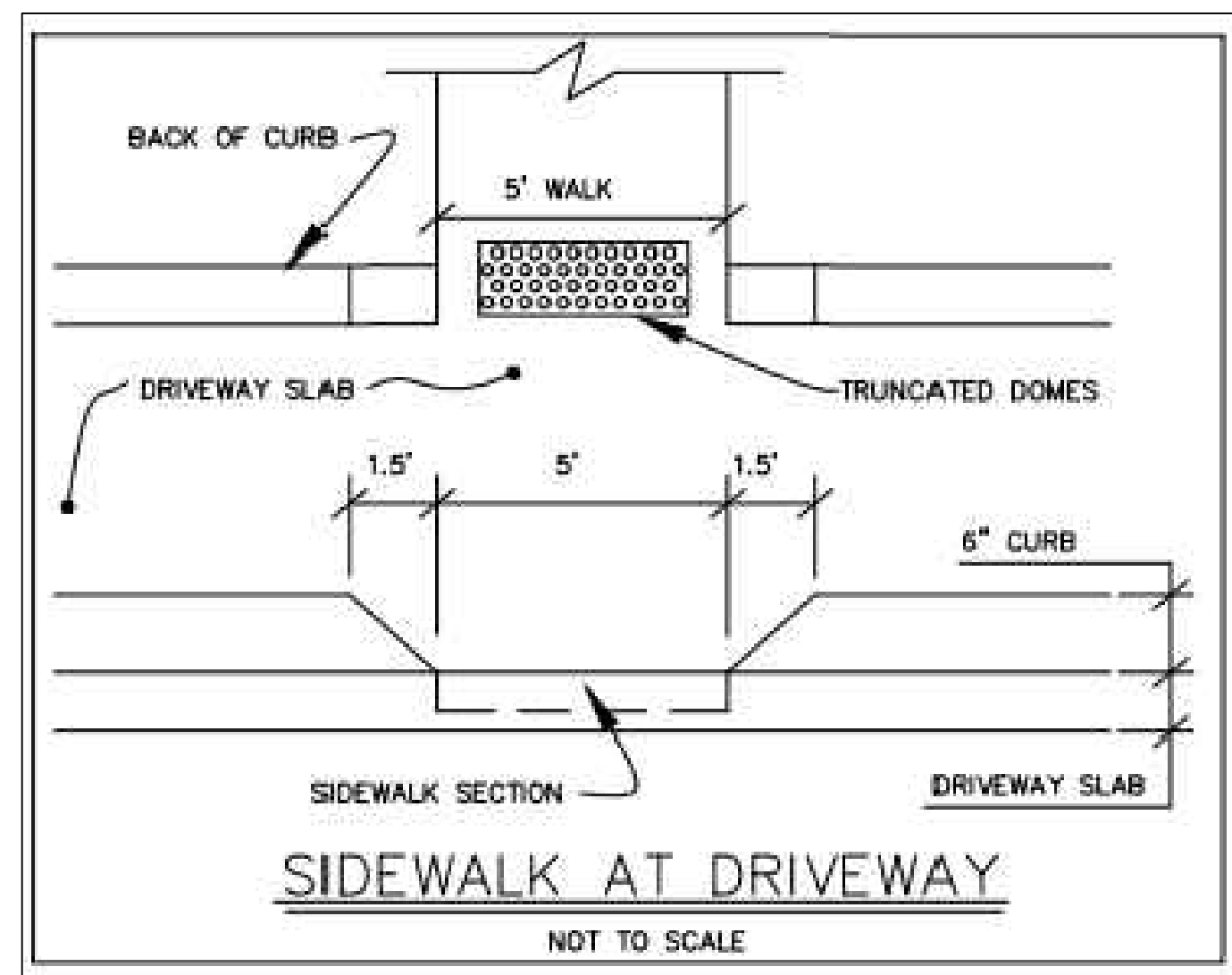
DEERY PROPERTY SUBDIVISION
 609 W MT. PLEASANT ST
 WEST BURLINGTON, IA

SHEET NAME
 UTILITY PLAN

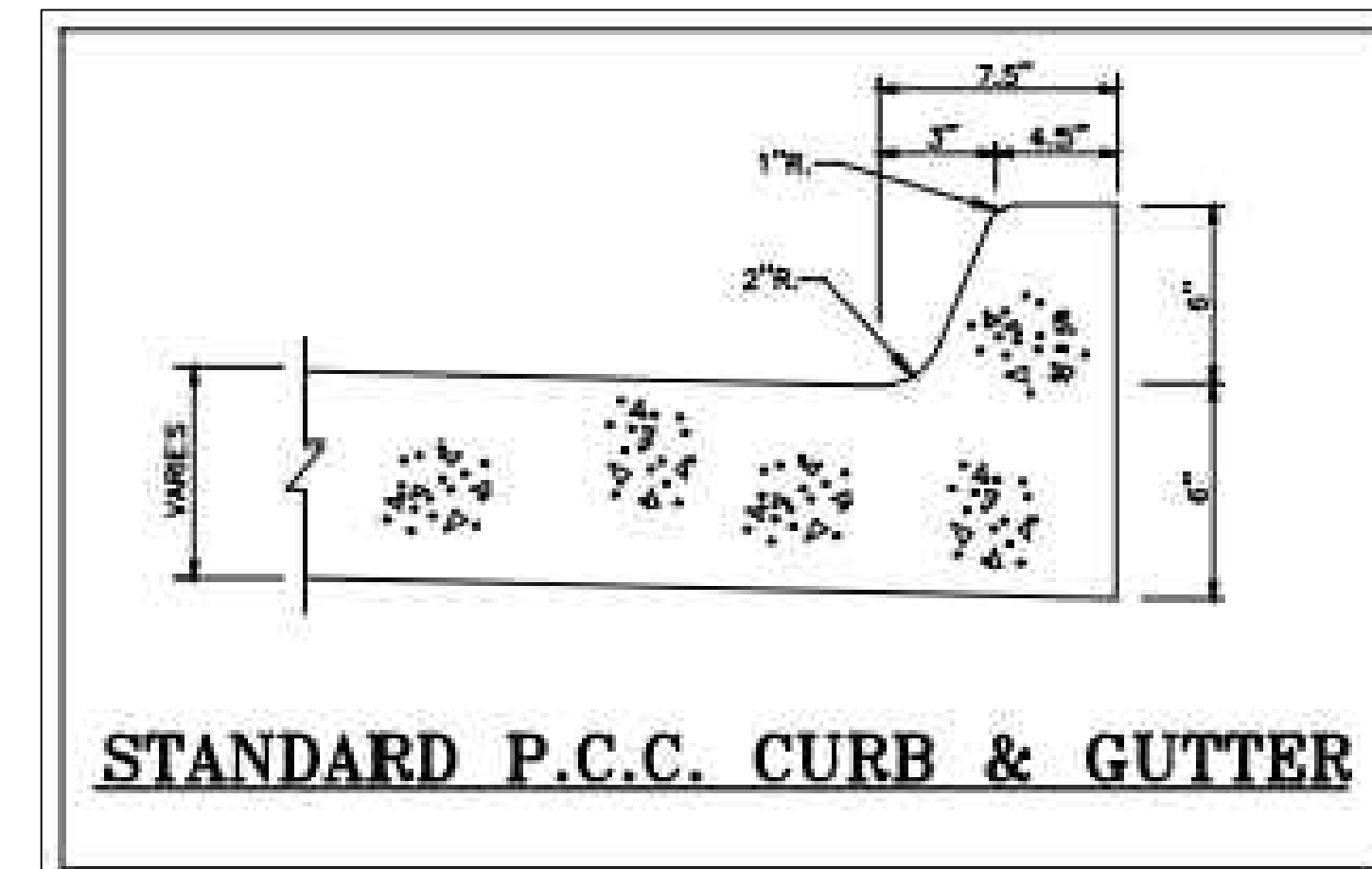
SHEET NO.
04



Roadway and Sidewalk Cross-Section



ADA Sidewalk Ramp



PROJECT: CEE: 4850
 DATE: 12/18/2024
 DRAWN BY: UNIVERSITY OF IOWA
 REVISION:

THE UNIVERSITY OF IOWA
 CIVIL AND ENVIRONMENTAL ENGINEERING
 4105 SEAMANS CENTER FOR THE
 ENGINEERING ARTS AND SCIENCES
 103 S CAPITOL ST
 IOWA CITY, IOWA 52242
 PHONE: 319.335.5647
 FAX: 319.335.5660
 EMAIL: civil-hawks@iowa.edu

CEE logo BW - no text.tif

EDUCATIONAL - NOT FOR CONSTRUCTION

DEERY PROPERTY SUBDIVISION
 609 W MT. PLEASANT ST
 WEST BURLINGTON, IA

SHEET NAME
 DETAIL SHEET

SHEET NO.
05

sq ft	beds	baths	bays	width	depth
2745	5	4	0	53'	30'

Turn OFF Image Gallery

sq ft	beds	baths	bays	width	depth
2700	5	2.5	2	30'	59'

Turn OFF Image Gallery

REVERSE

Elevation

ADD TO CART

sq ft	beds	baths	bays	width	depth
2727	4	2.5	2	81'	28'

Turn OFF Image Gallery

REVERSE

Elevation

ADD TO CART

sq ft	beds	baths	bays	width	depth
2832	4	4	2	44'	83'

Turn OFF Image Gallery

REVERSE

Elevation

ADD TO CART

sq ft	beds	baths	bays	width	depth
2258	3	2.5	2	54'	58'

Turn OFF Image Gallery

REVERSE

Elevation

ADD TO CART

sq ft	beds	baths	bays	width	depth
2309	4	2.5	2	40'	40'

Turn OFF Image Gallery

REVERSE

Elevation

ADD TO CART

Enter Promo Code APPLY

sq ft	beds	baths	bays	width	depth
2336	4	3	2	59'	68'

Turn OFF Image Gallery

REVERSE

Elevation

ADD TO CART

sq ft	beds	baths	bays	width	depth
2470	4	2.5	2	48'	59'

Turn OFF Image Gallery

REVERSE

Elevation

ADD TO CART

Enter Promo Code APPLY

PROJECT: CEE: 4850
 DATE: 12/18/2024
 DRAWN BY: UNIVERSITY OF IOWA
 REVISION:

THE UNIVERSITY OF IOWA
CIVIL AND ENVIRONMENTAL ENGINEERING
 4105 SEAMANS CENTER FOR THE
 ENGINEERING ARTS AND SCIENCES
 103 S CAPITOL ST
 IOWA CITY, IOWA 52242
 PHONE: 319.335.5647
 FAX: 319.335.5660
 EMAIL: civil-hawks@iowa.edu

CEE logo BW - no text.tif

EDUCATIONAL - NOT FOR CONSTRUCTION

DEERY PROPERTY SUBDIVISION
 609 W MT. PLEASANT ST
 WEST BURLINGTON, IA

SHEET NAME
 BUILDINGS & FLOORPLANS

SHEET NO.
06