

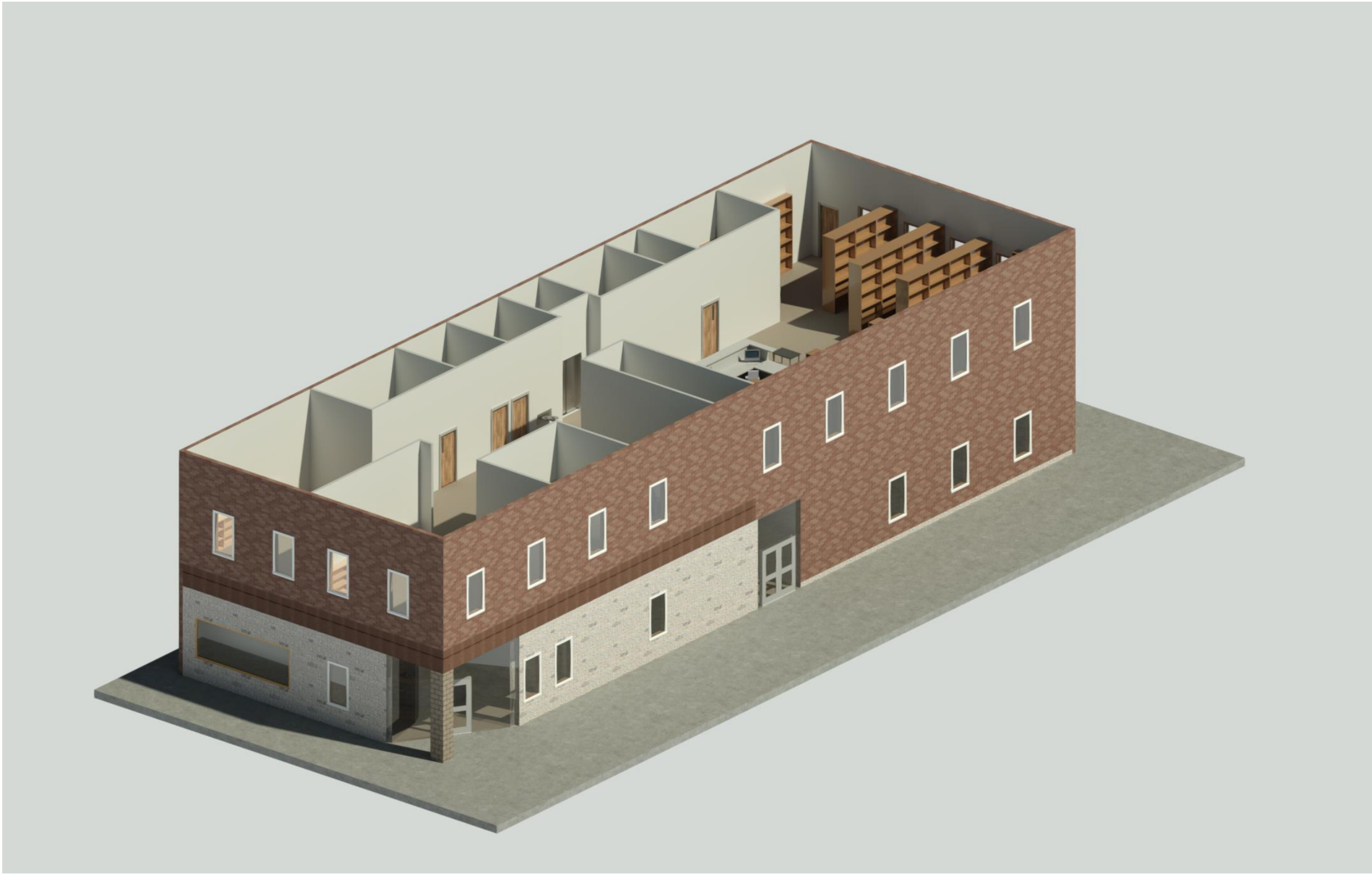
New Sharon City Hall Improvements

Blake Hayden, Grant Caltrider, Tommy Dillon
Department of Civil and Environmental Engineering
The University of Iowa
May 5th, 2025



Project Overview

The New Sharon city hall is located at 101 S Main Street, New Sharon, IA. This project involves the redesign and expansion of New Sharon’s existing City Hall to integrate the police department and public library into a single, efficient, and ADA-compliant facility. The updated design improves functionality, accessibility, and sustainability while preserving the building’s historical character and serving the community’s evolving needs.



1st Floor – City Hall & Police Department

The first floor features a central city hall area with dedicated offices for the city clerk and deputy clerk, a council chamber for public meetings, and a front service counter. Adjacent to this is the police department, including offices, an evidence storage room, and a secure garage. The layout is designed for efficiency, accessibility, and clear separation between public and administrative spaces.

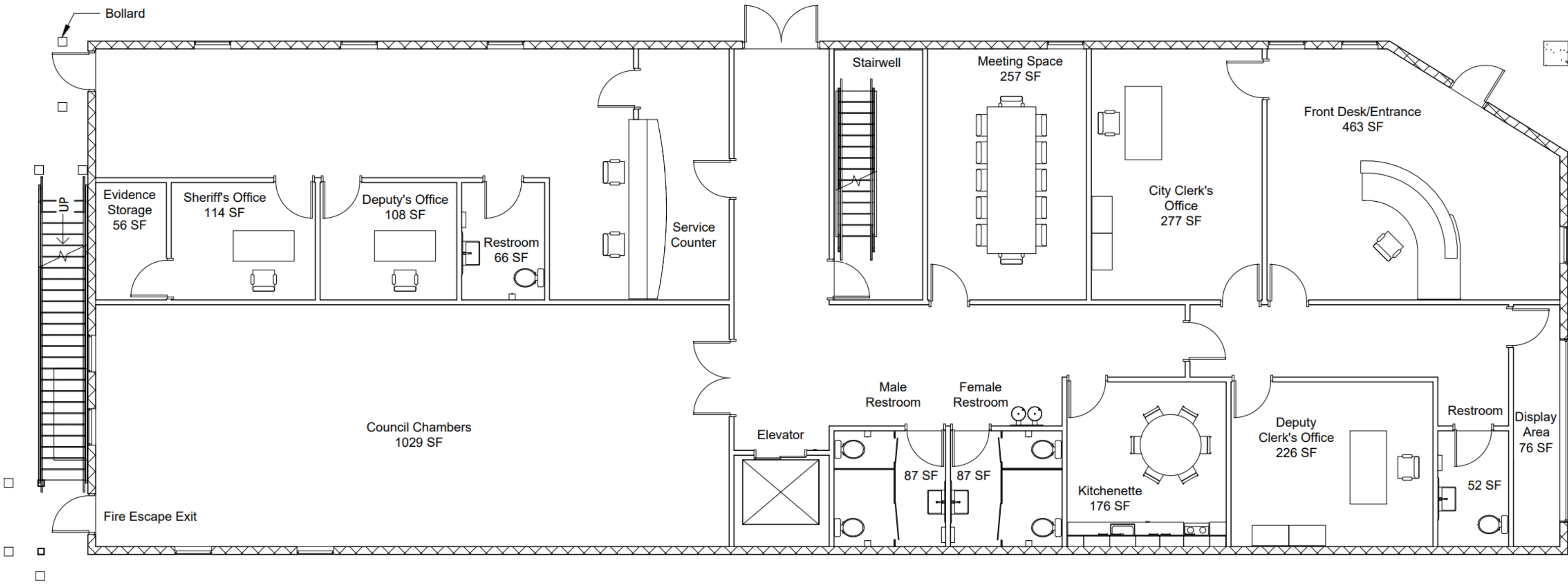


Figure 2. First Floor Plan

2nd Floor - Library

The second floor of the building is dedicated entirely to the public library, featuring expanded areas for all age groups, including children, teens, and adults. It includes study rooms, a makerspace, a private office, a larger computer area, and an open-floor plan to support educational and community events. The new layout significantly increases functionality, accessibility, and capacity compared to the current library.

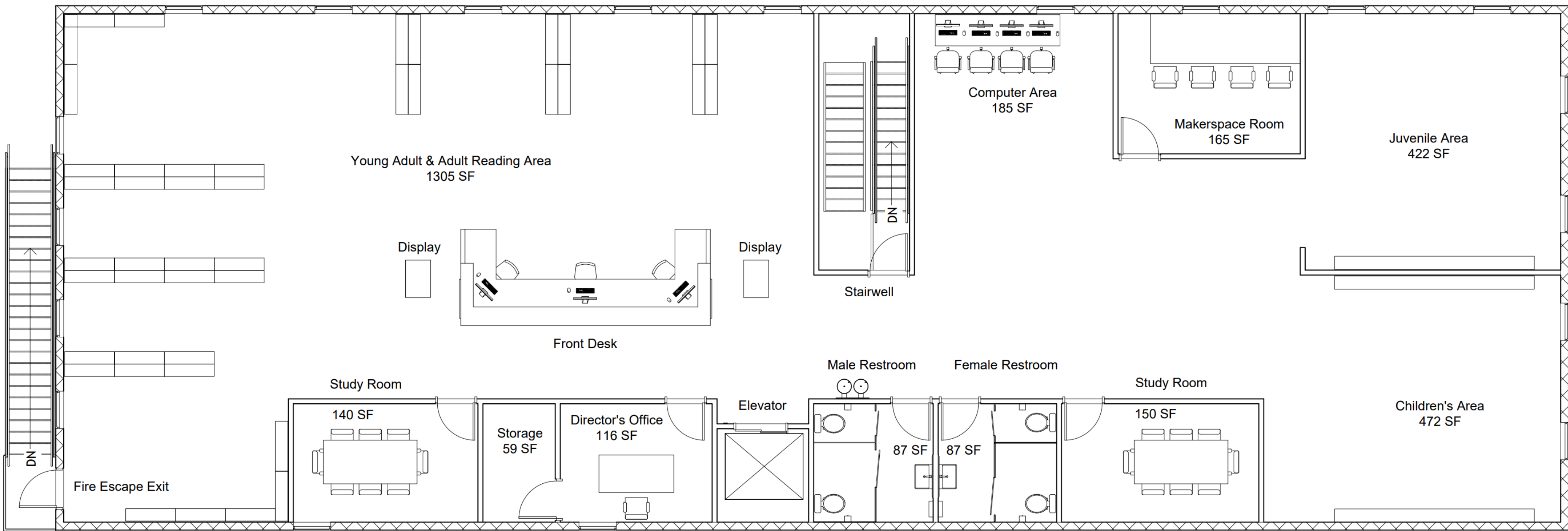


Figure 3. Second Floor Plan

Cost Estimation

The estimated construction cost for the City Hall renovation is approximately \$3.2 million. This includes upgrades to utilities, restoration, ADA accessibility, a new elevator, and a police garage. A 20% contingency and 8% administration fee were included to account for project management, permitting, and unforeseen expenses.

Construction Subtotal	\$2,490,600
20% Contingencies	\$498,200
8% Engineering and Administration	\$199,200
Total Project Cost	\$3,188,000

Figure 4. Total Cost Estimate