

# Park & Forestry Facility

Ben Soldwisch, Kimberly Alvarado, Cameron Czupek  
Department of Civil and Environmental Engineering  
University of Iowa

## Project Scope

This project involves the planning and design of a new centralized office and maintenance facility for the City of Burlington's Park and Forestry Department's. This new facility will combine all department operations into a single site to improve efficiency and streamline services. The new building integrates an office space with a garage for maintenance and storage. This design will house 6 full-time office and over 30 maintenance employees, a 29-vehicle fleet, storage for all kinds of equipment and the ability to host community events in an open community room.



Figure 1. Location of Project Site in Relation to Dankwardt & Crapo Parks

## Project Overview & Location

The project will sit on a centralized site conveniently located between Dankwardt and Crapo parks. This site will feature ample parking for department employees as well as the community, outdoor patio spaces, equipment fueling station, plant/tree/landscaping material storage, security fencing with access gates, a water retention basin and Stunning landscaping all over the grounds.

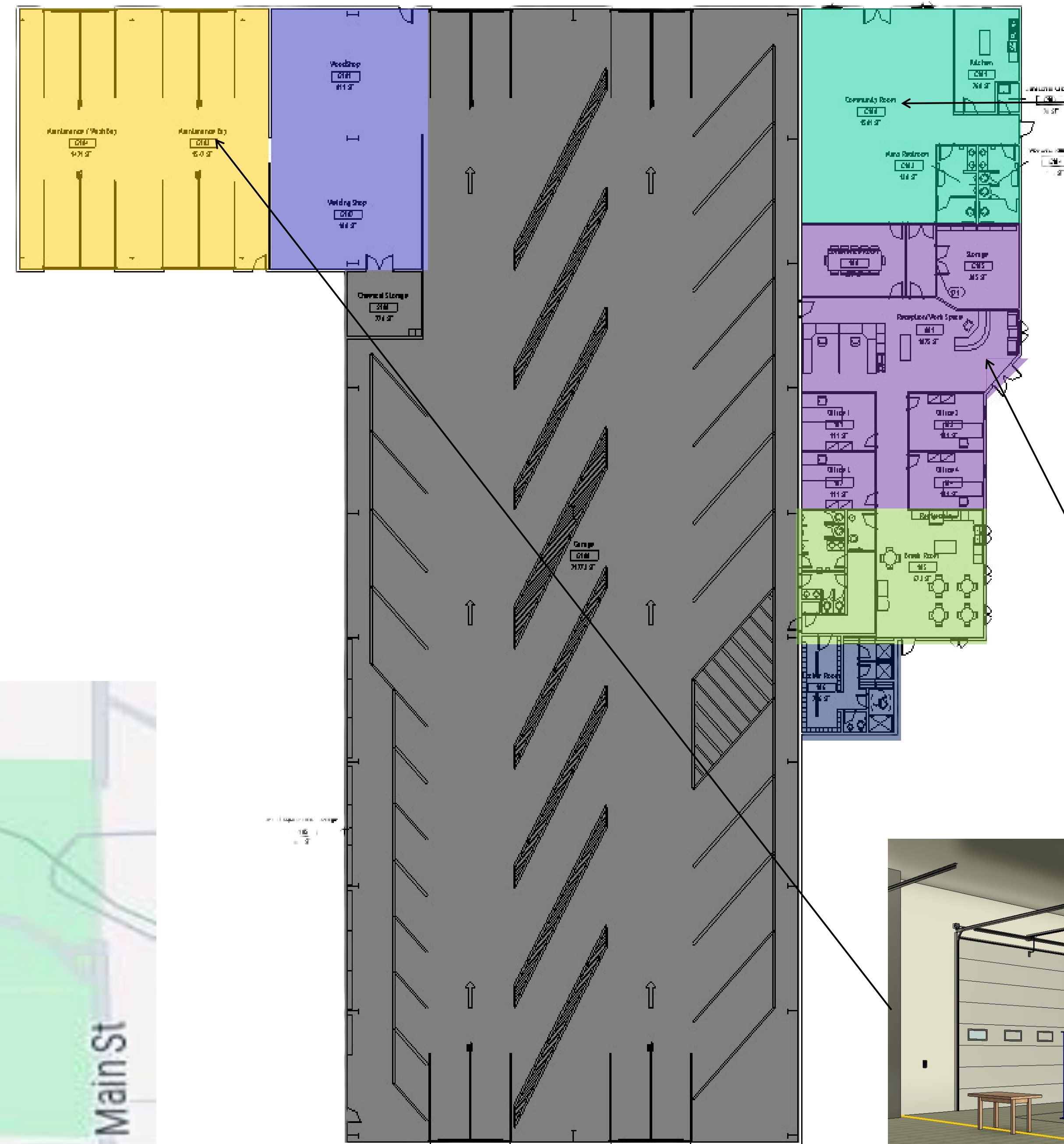


Figure 2. Architectural Floorplan for Office, Maintenance, & Garage Space



Figure 3. Revit 3D model of Community Room



Figure 4. Revit 3D model of Reception Area

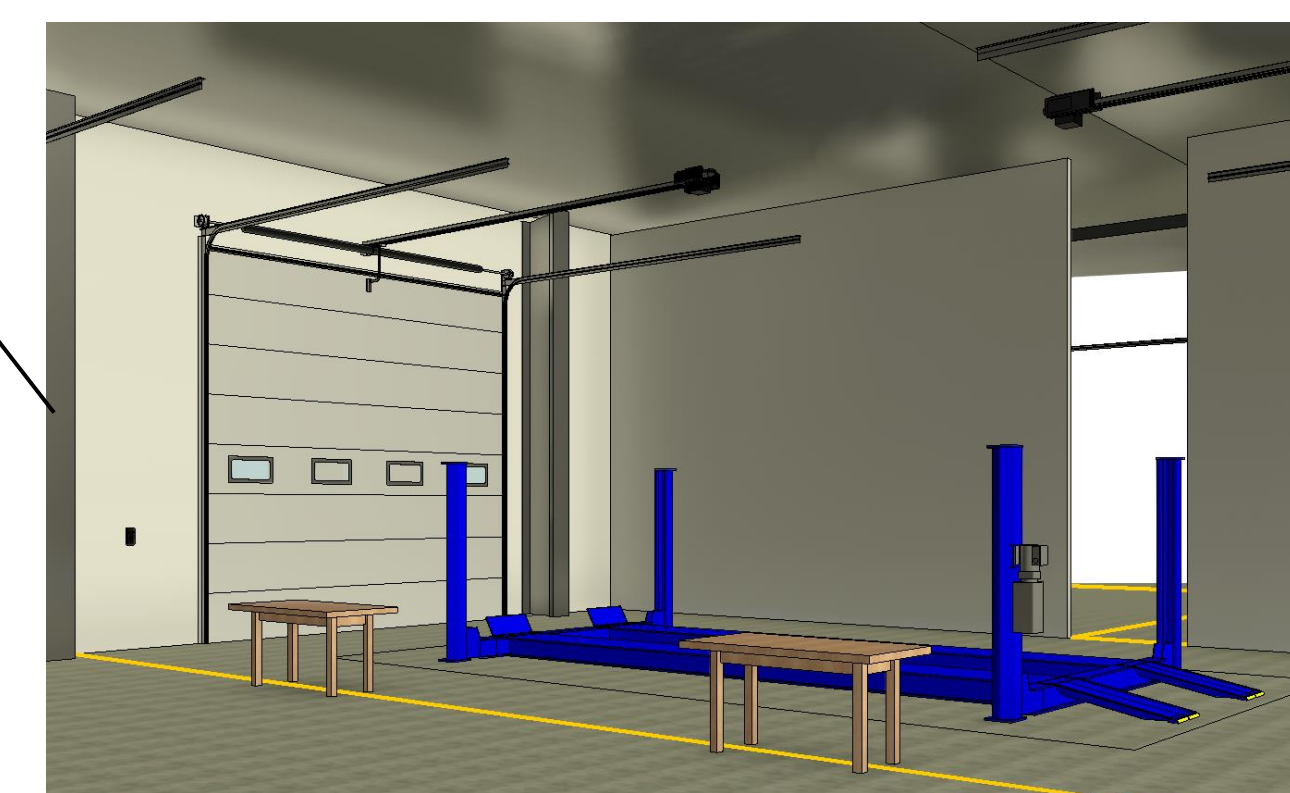


Figure 5. Revit 3D model of Maintenance Bays



Figure 6. Project Site Layout

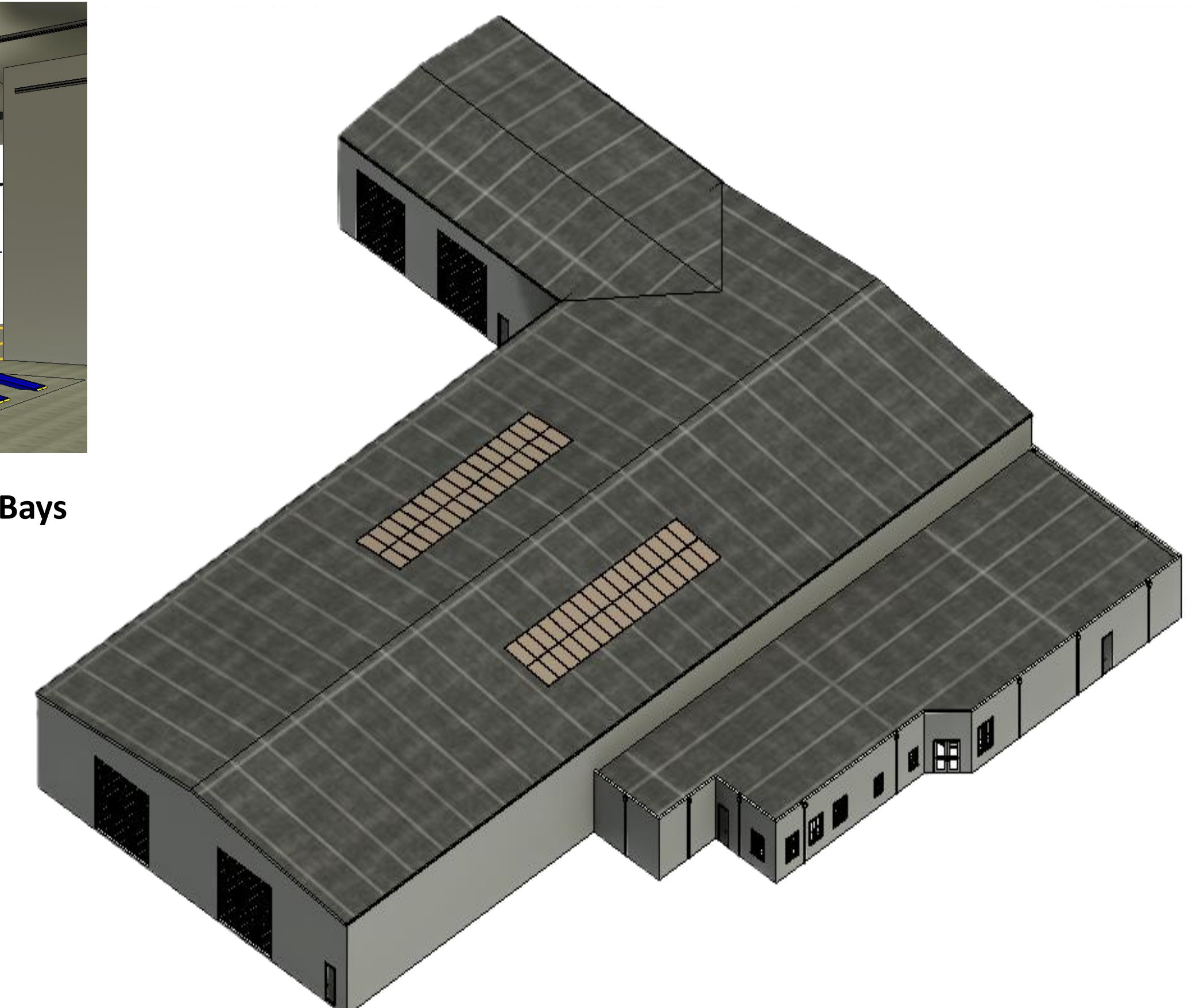


Figure 7. Revit 3D model of the Office & Maintenance Building

## Conclusion

Many different alternative designs were developed with the aid of our client until a final design was chosen that met clients' needs. The final cost for this project came out to be **\$3,388,795.**

## References

<https://www.iowasudas.org/manuals/specifications-manual/>  
<https://www.iccsafe.org/content/international-plumbing-code-ipc-home-page/>