

New Sharon City Hall Improvements



New Sharon, Iowa
May 5th, 2025

IOWA

Civil and Environmental
Engineering

Presentation Agenda

IOWA

Civil and Environmental
Engineering

1. Team Introduction
2. Project Overview
3. Design Selection
4. Design Elements
5. Cost Estimates



Our Team

IOWA

Civil and Environmental
Engineering



Grant Caltrider



Blake Hayden
Project Manager



Tommy Dillon



Project Location

Project Scope

IOWA

Civil and Environmental
Engineering



Remodel and
Expansion of City
Hall Space



Updated Sidewalks



Exterior Renovations



Proposed Police Car
Garage



Design Selection

IOWA

Civil and Environmental
Engineering

Two alternatives considered

Restore historical appearance

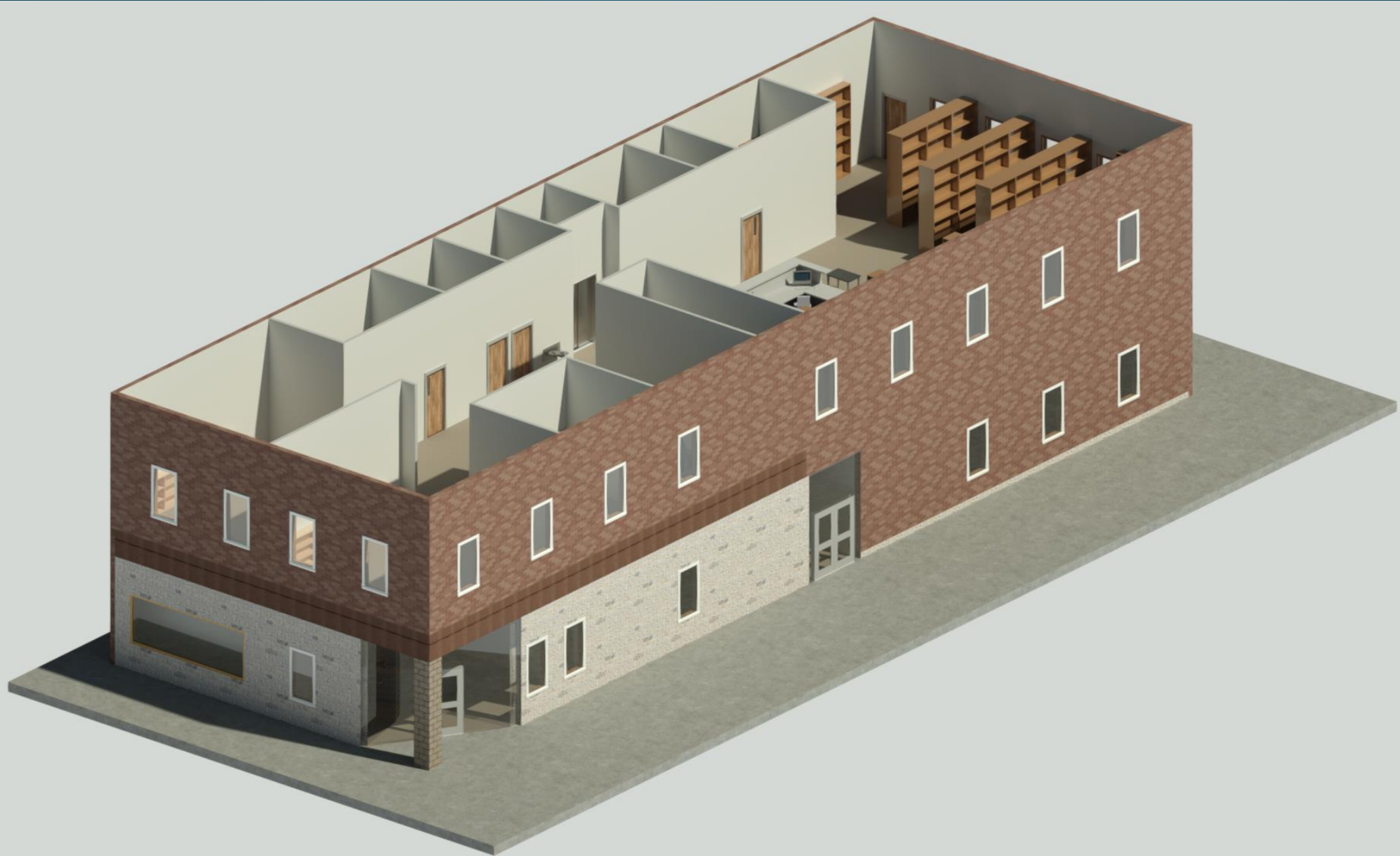
ADA accessible facilities



Second Floor- Library Space

IOWA

Civil and Environmental
Engineering



Second Floor - Library Space

IOWA

Civil and Environmental
Engineering

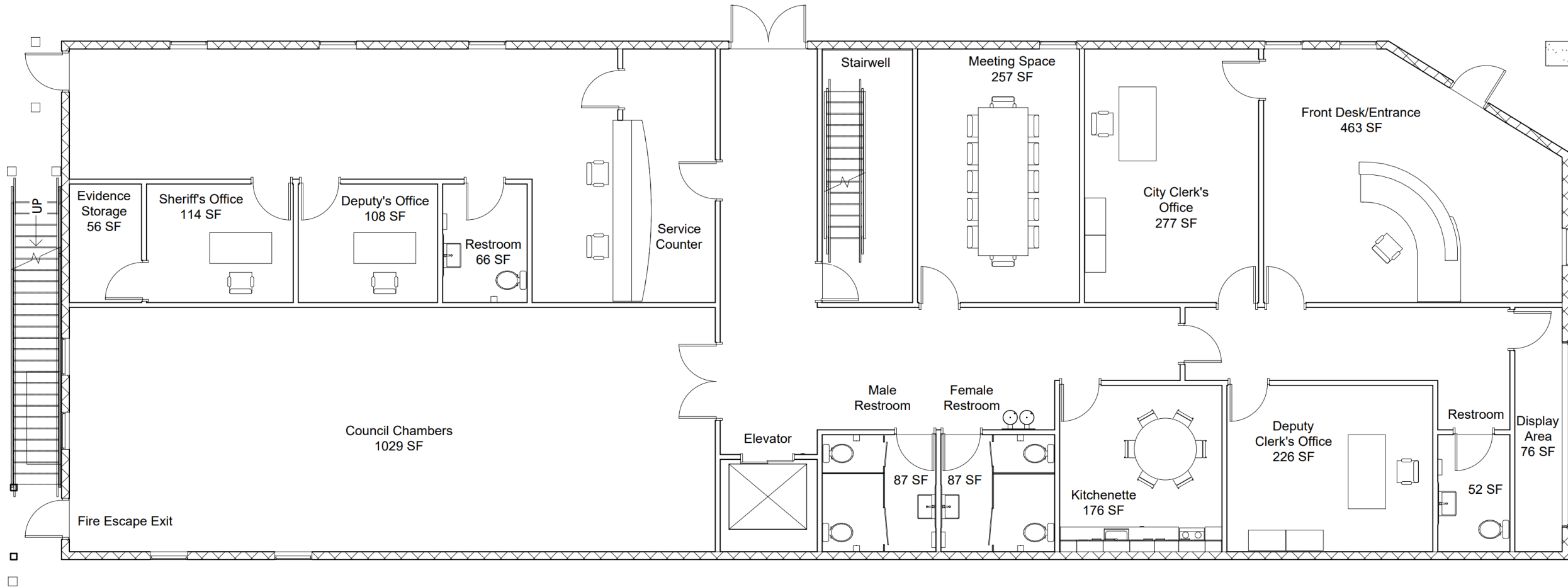


First Floor - City Hall Space

IOWA

Civil and Environmental
Engineering



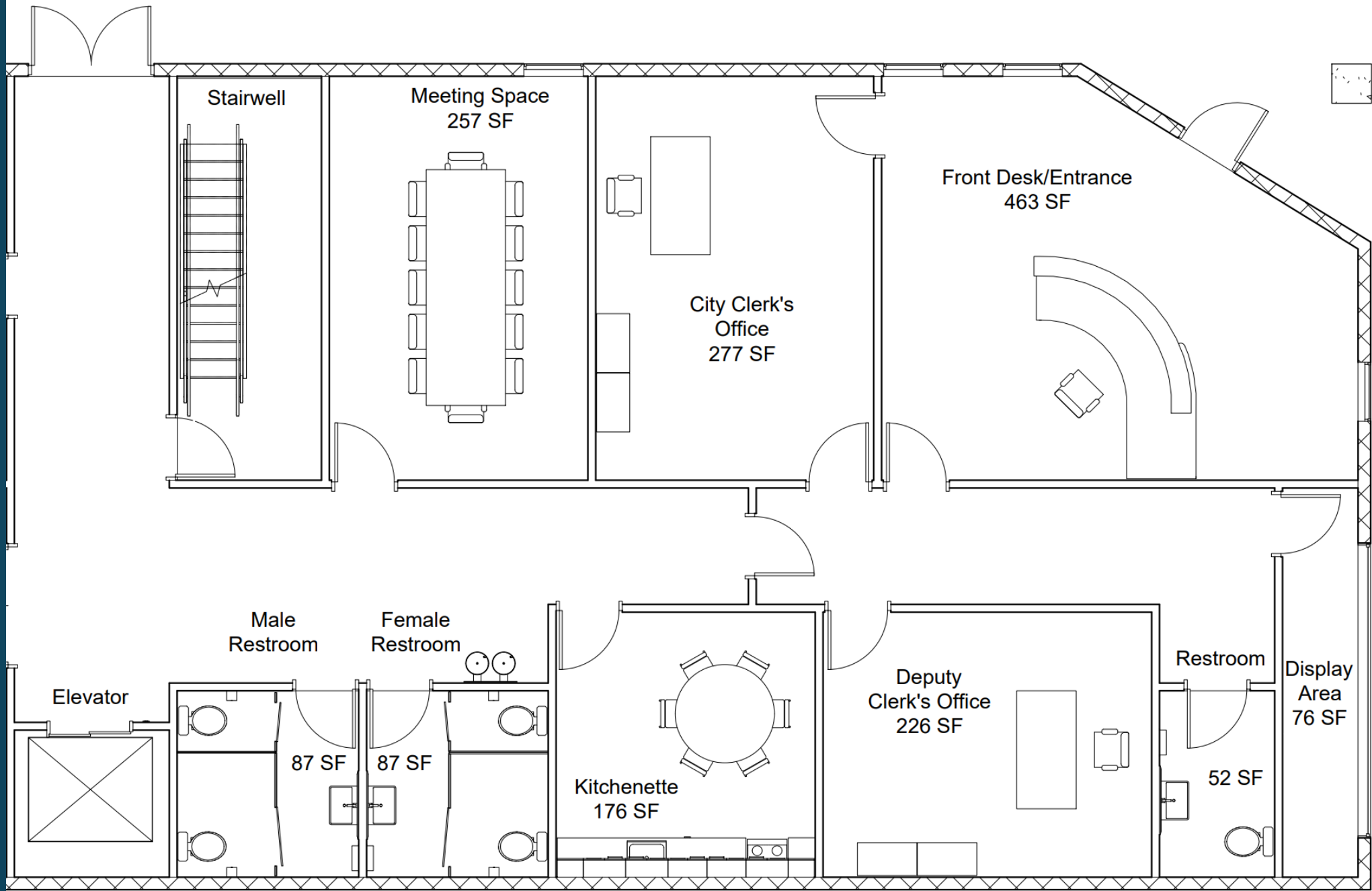


Primary Functions:

- City Clerk's Office
- Police Department
- City Council Chambers

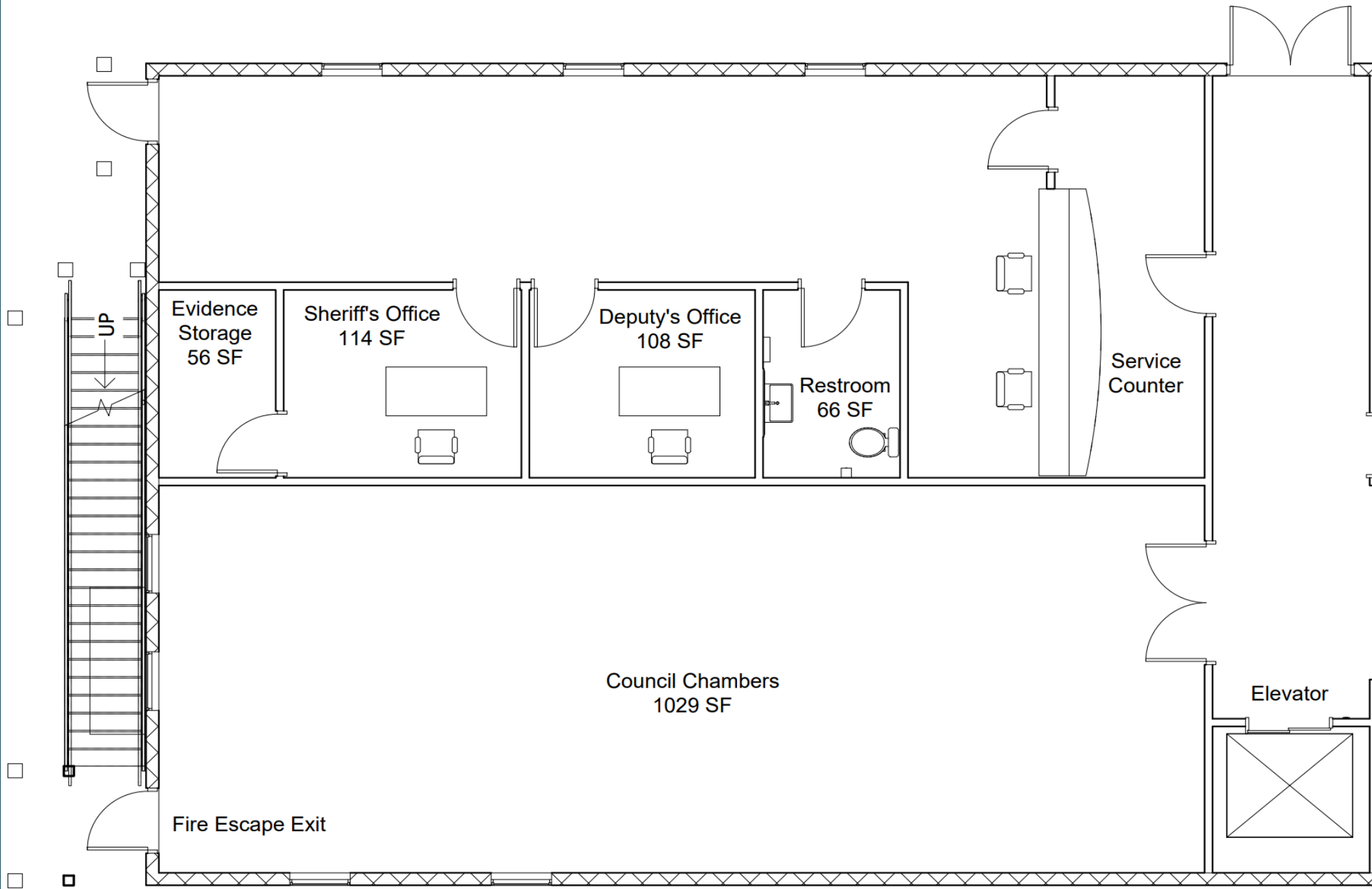
IOWA

Civil and Environmental
Engineering



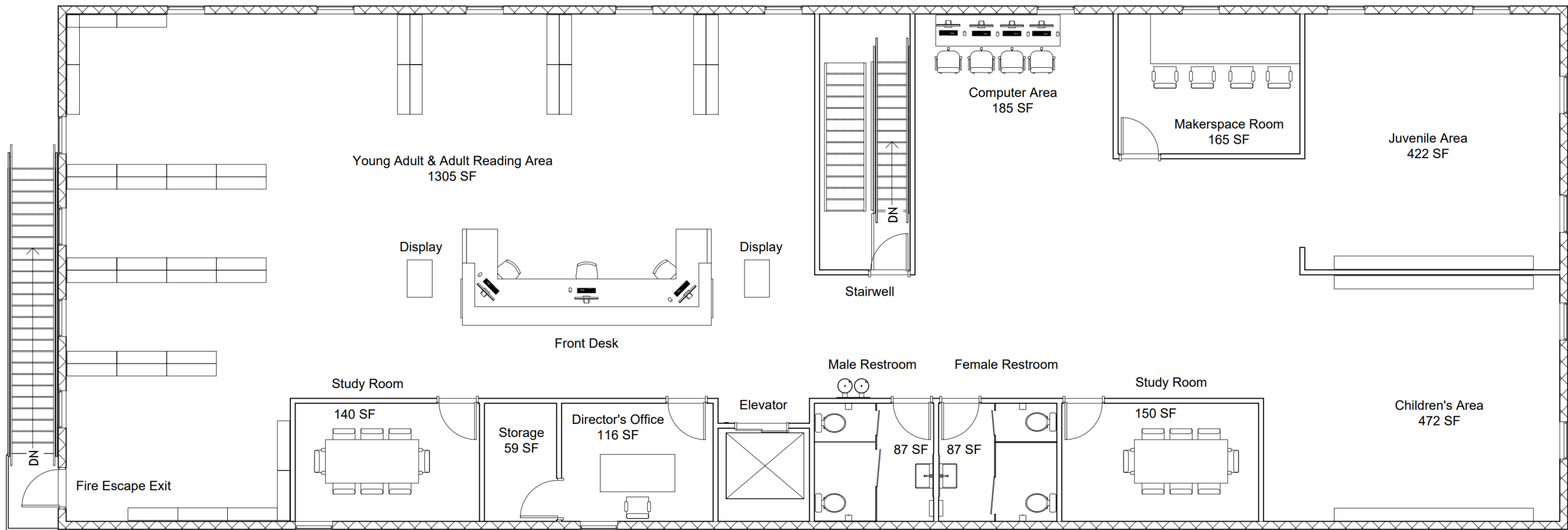
IOWA

Civil and Environmental
Engineering



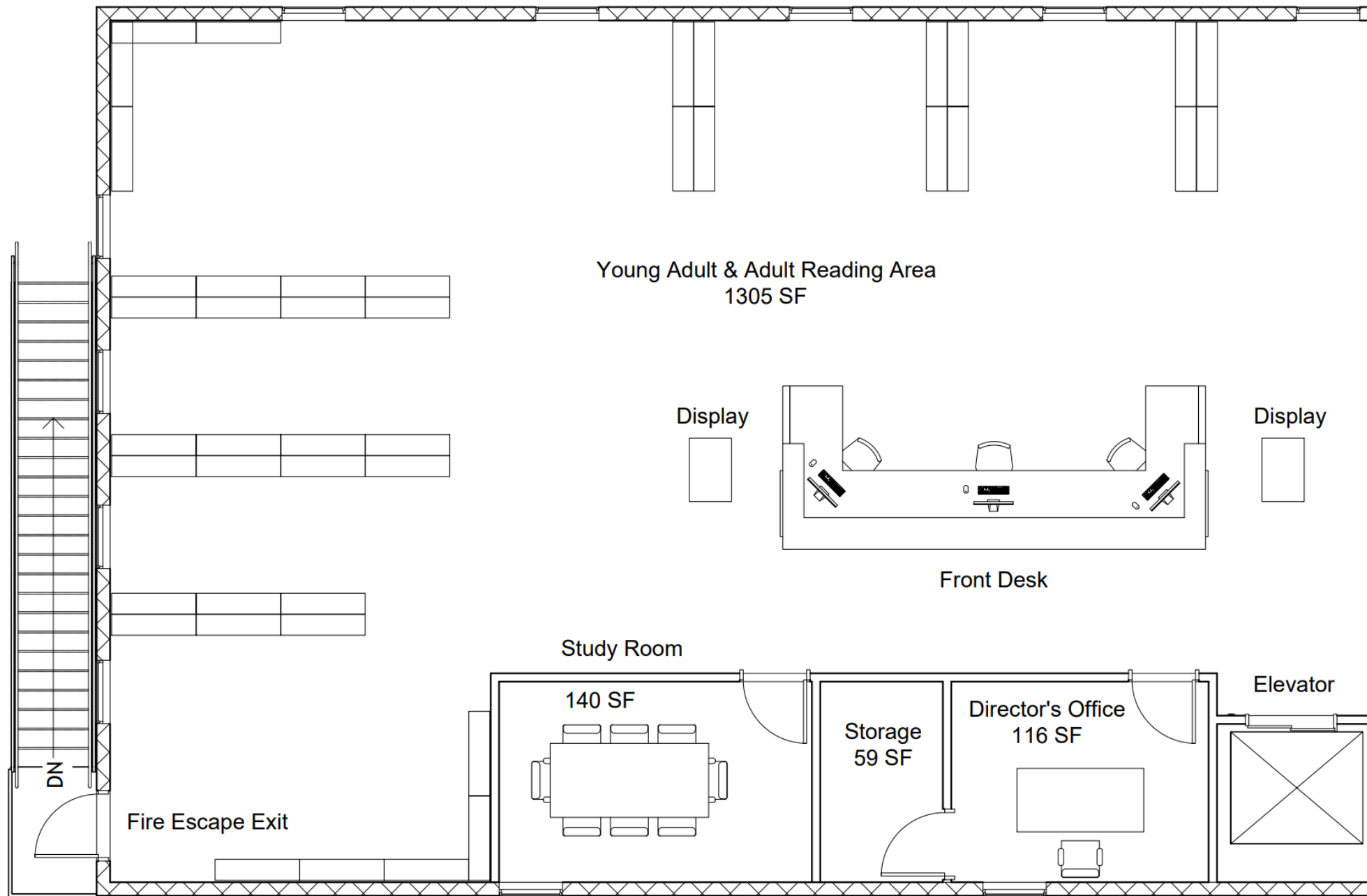
IOWA

Civil and Environmental
Engineering



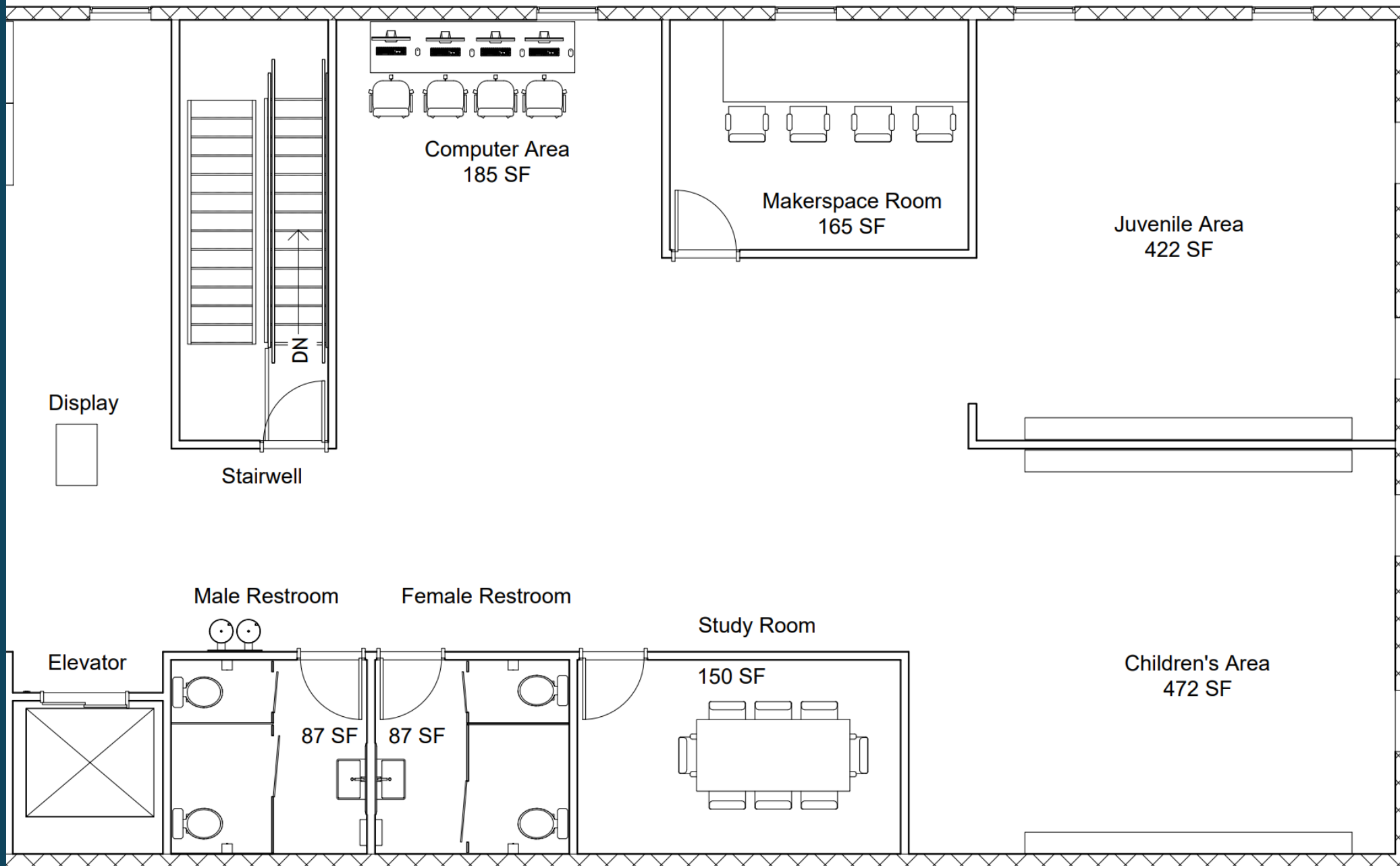
Primary Functions:

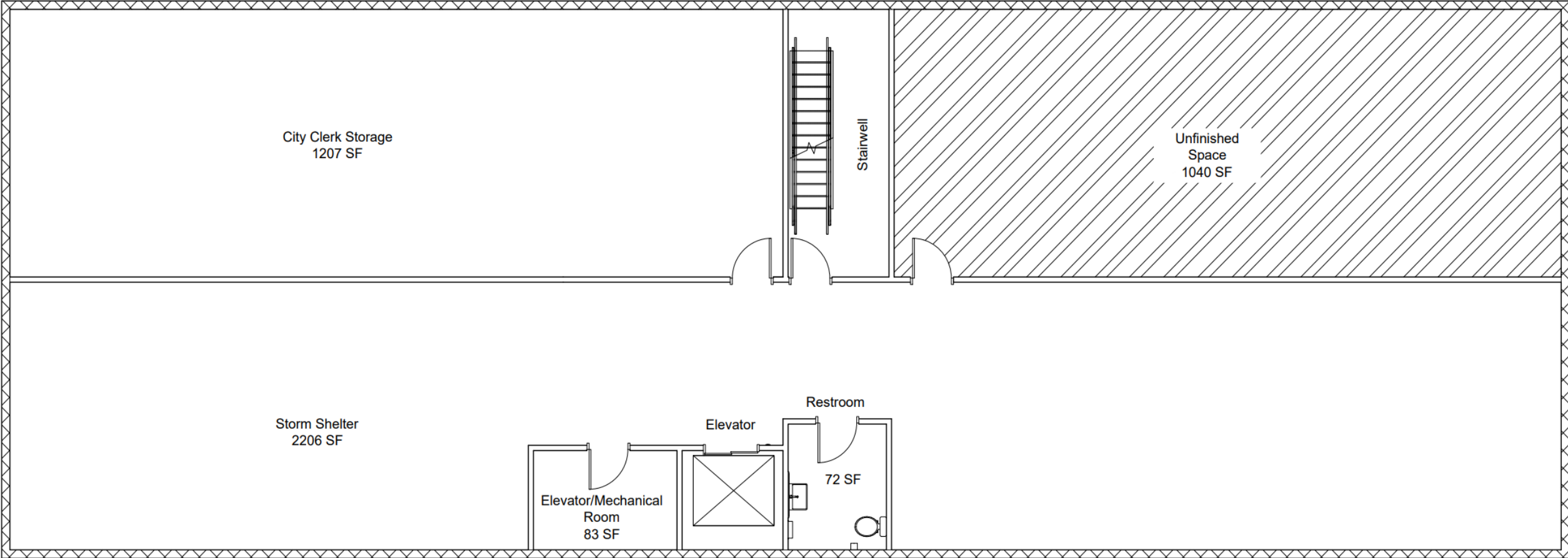
- Library
- Reading Areas for all age groups
- Study Rooms



IOWA

Civil and Environmental
Engineering

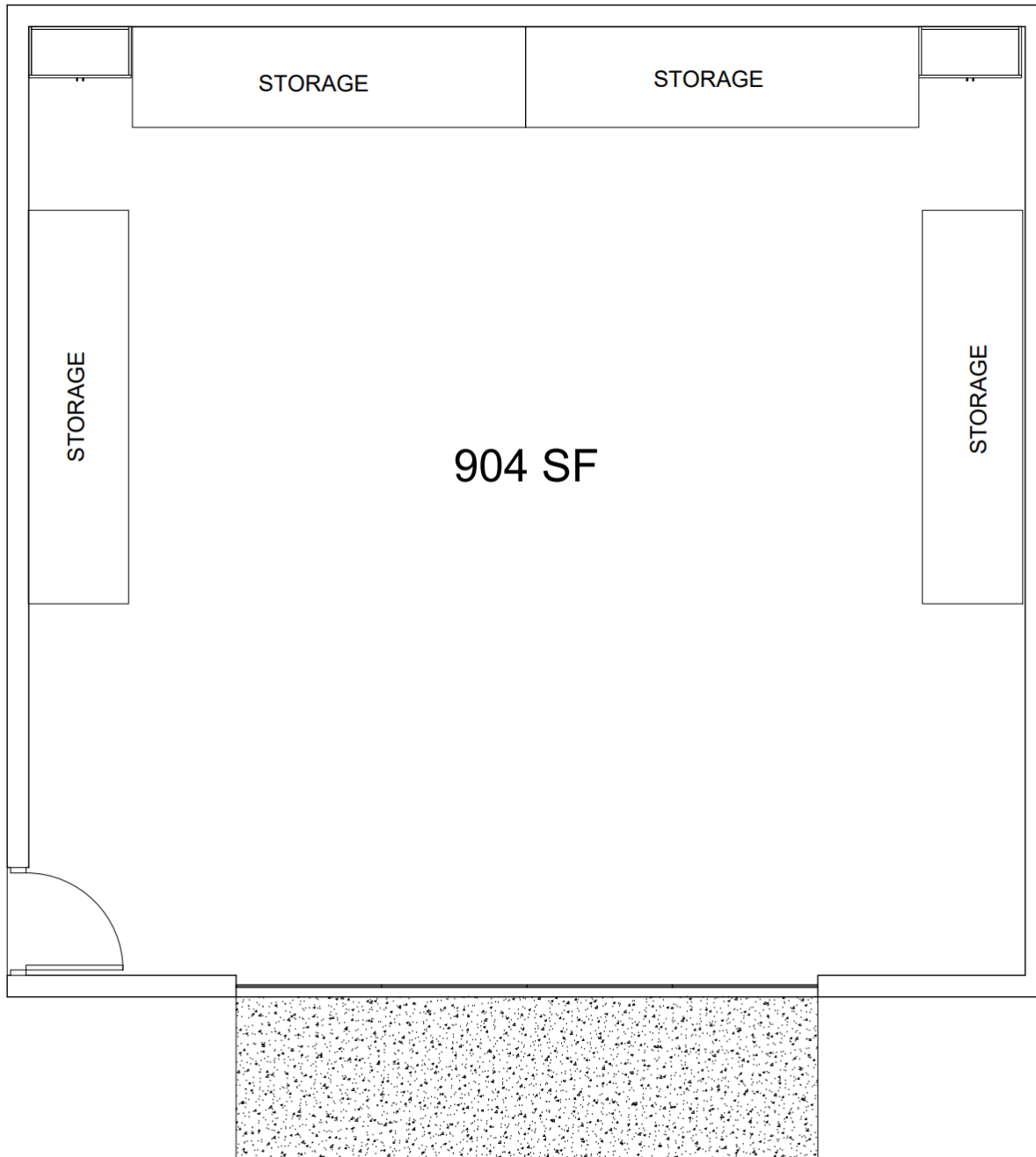




Primary Functions:
Storm Shelter
Extra Storage
Electrical and Mechanical Room



Police Car Garage



Police Car Garage

First Floor Interior – City Clerk's Lobby



IOWA

Civil and Environmental
Engineering

First Floor Interior – Police Department



IOWA

Civil and Environmental
Engineering

First Floor Interior – Conference Room



IOWA

Civil and Environmental
Engineering

Second Floor Interior – West End of Library Space



IOWA

Civil and Environmental
Engineering

Second Floor Interior – East End of Library Space



IOWA

Civil and Environmental
Engineering

Police Car Garage Interior



IOWA

Civil and Environmental
Engineering

Police Car Garage Interior



IOWA

Civil and Environmental
Engineering

New Sidewalk Design

IOWA

Civil and Environmental
Engineering

W MARKET ST

Match Edge With Existing Driveway

6" Curb

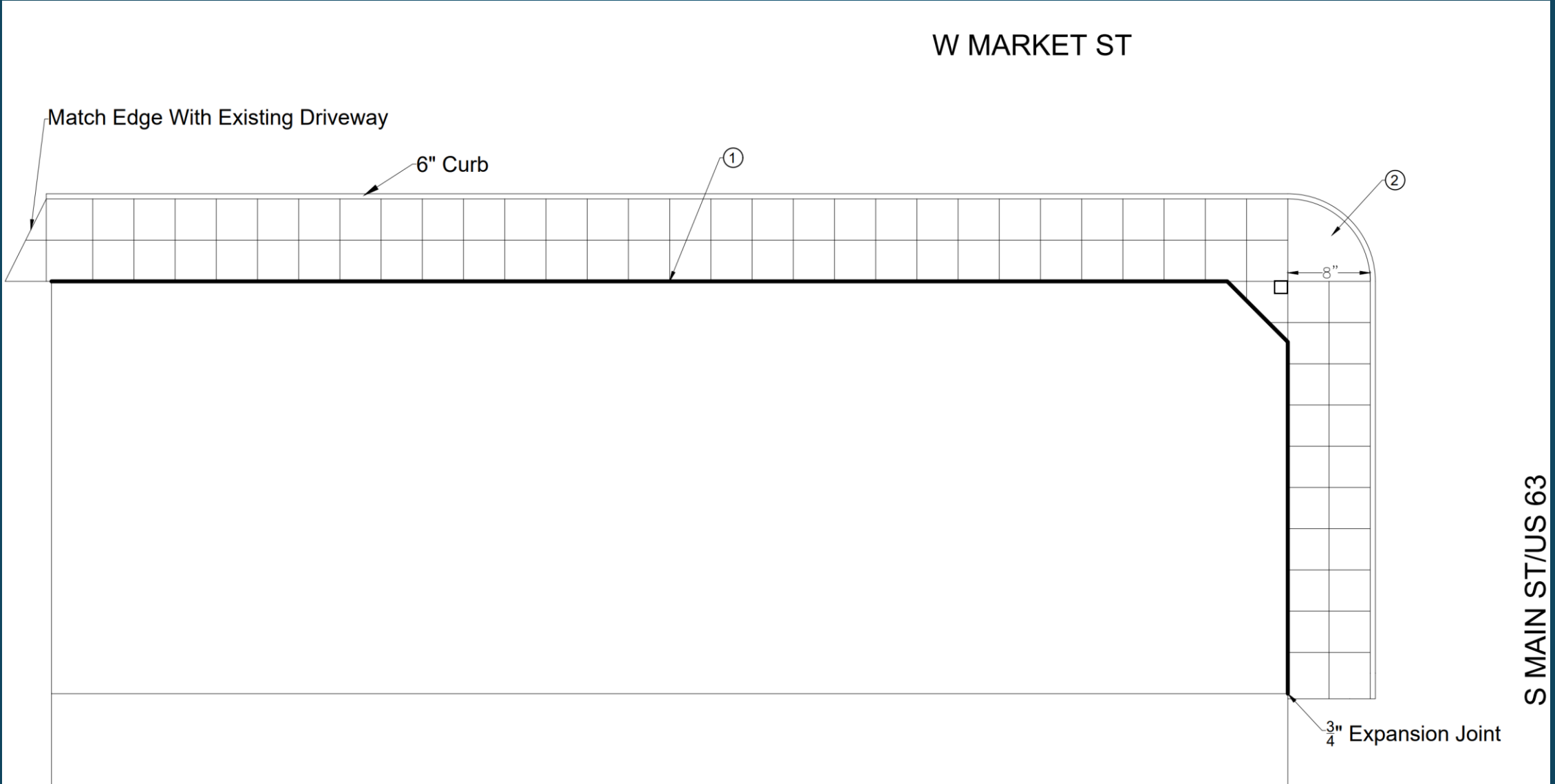
①

②

8"

S MAIN ST/US 63

$\frac{3}{4}$ " Expansion Joint



Construction Cost Estimate

IOWA

Civil and Environmental
Engineering

Item	Cost
Interior	\$2,199,800
Exterior	\$119,290
Service Lines	\$38,650
Police Garage	\$132,900
Total	\$2,490,600

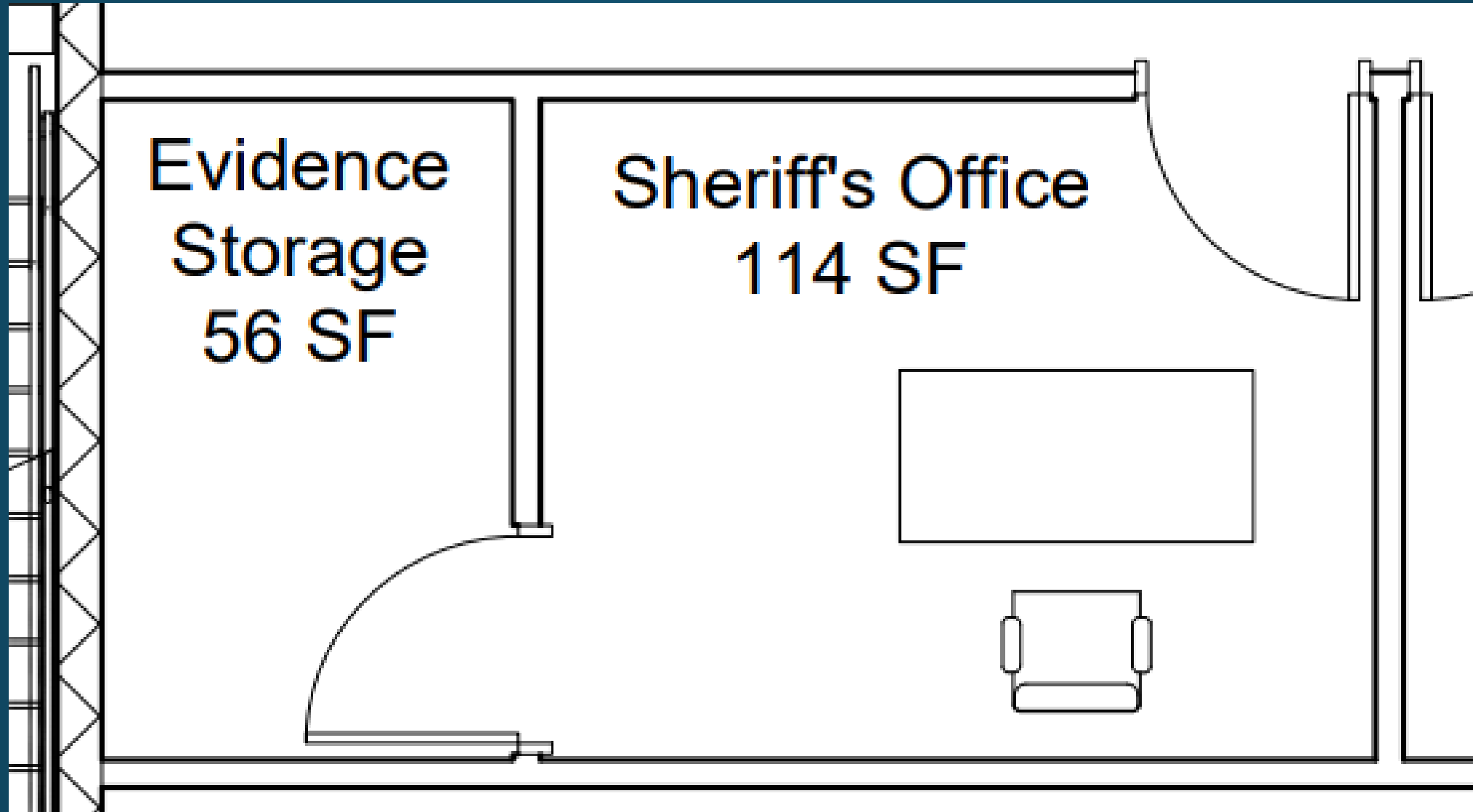
Total Cost Estimate

Construction Subtotal	\$2,490,600
20% Contingencies	\$498,200
8% Engineering and Administration	\$199,200
Total Project Cost	\$3,188,000

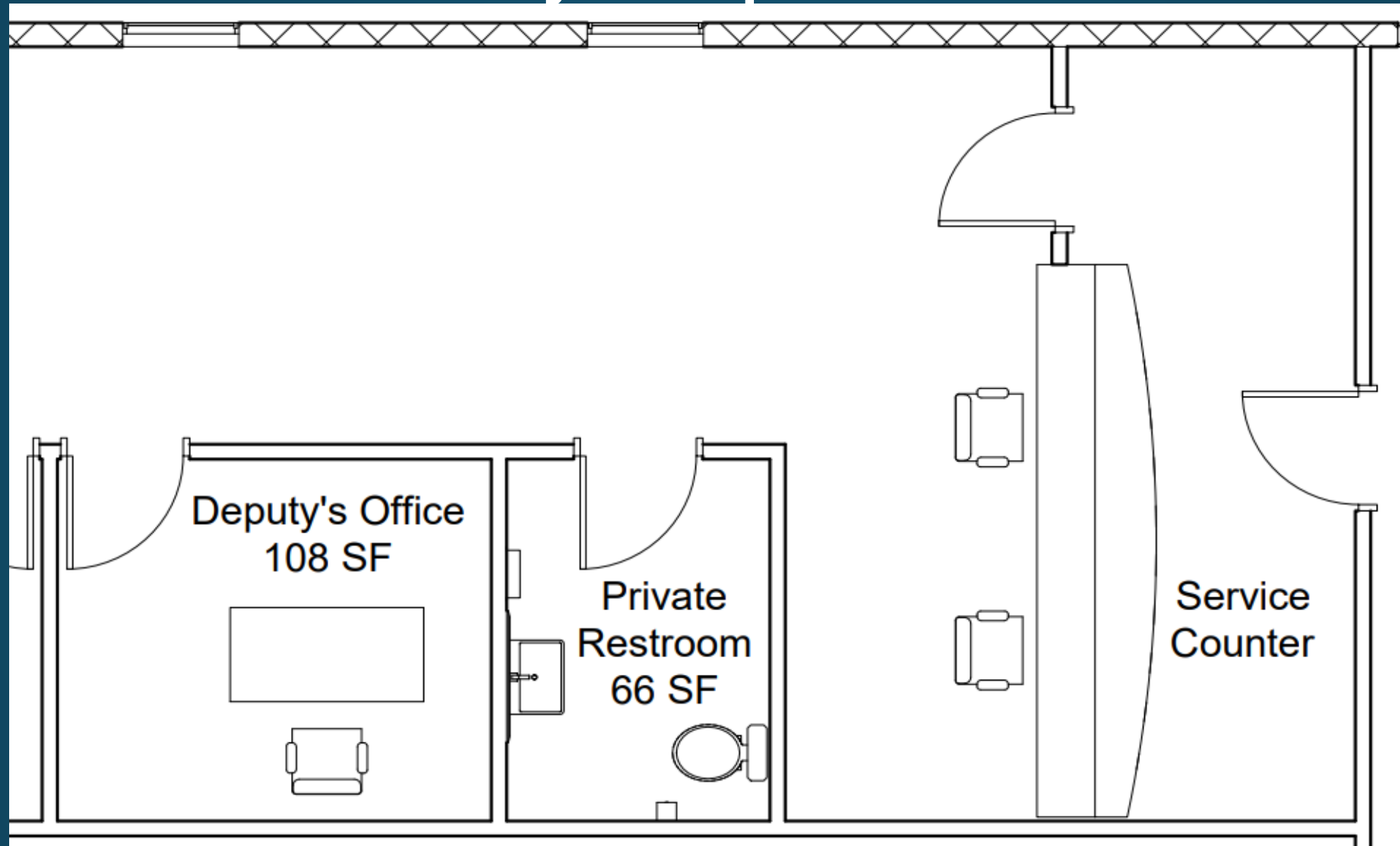
Thank you!



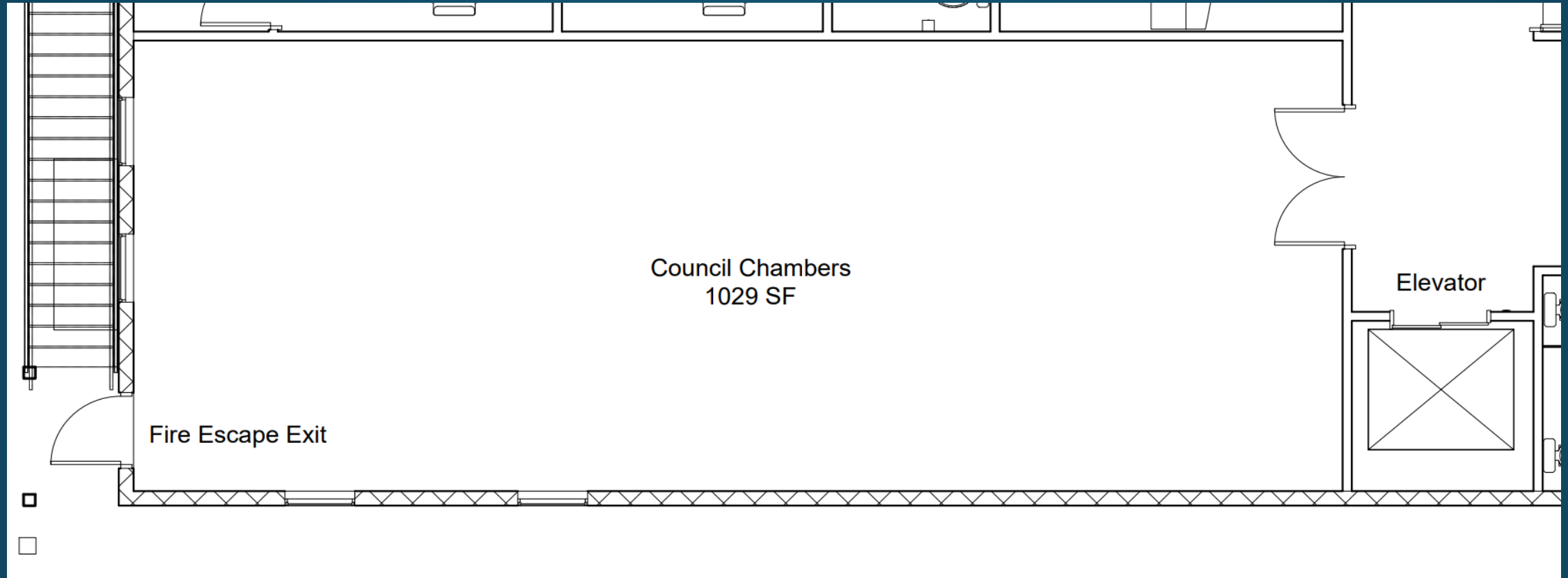
First Floor – West End of City Hall Space



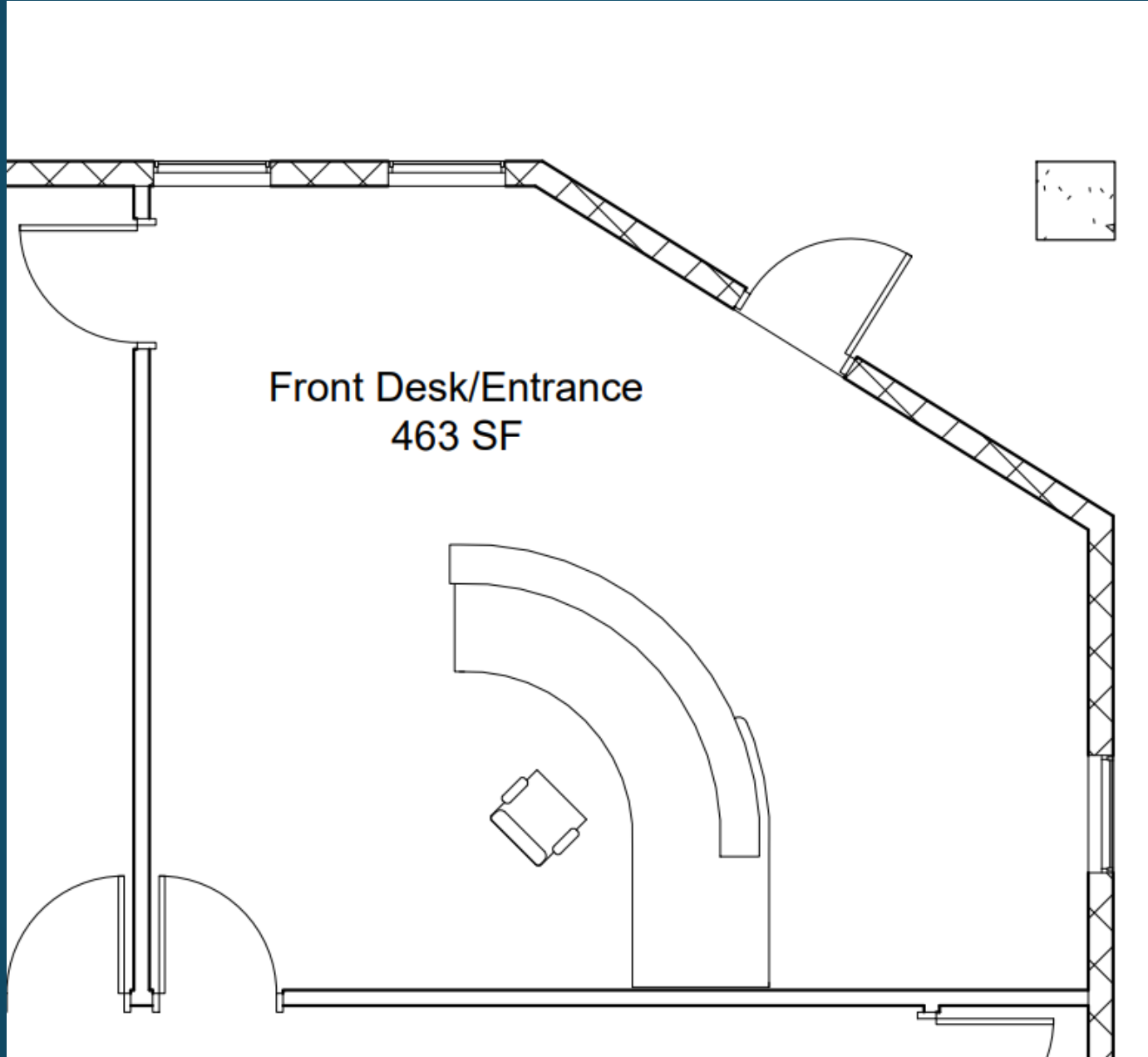
First Floor – West End of City Hall Space



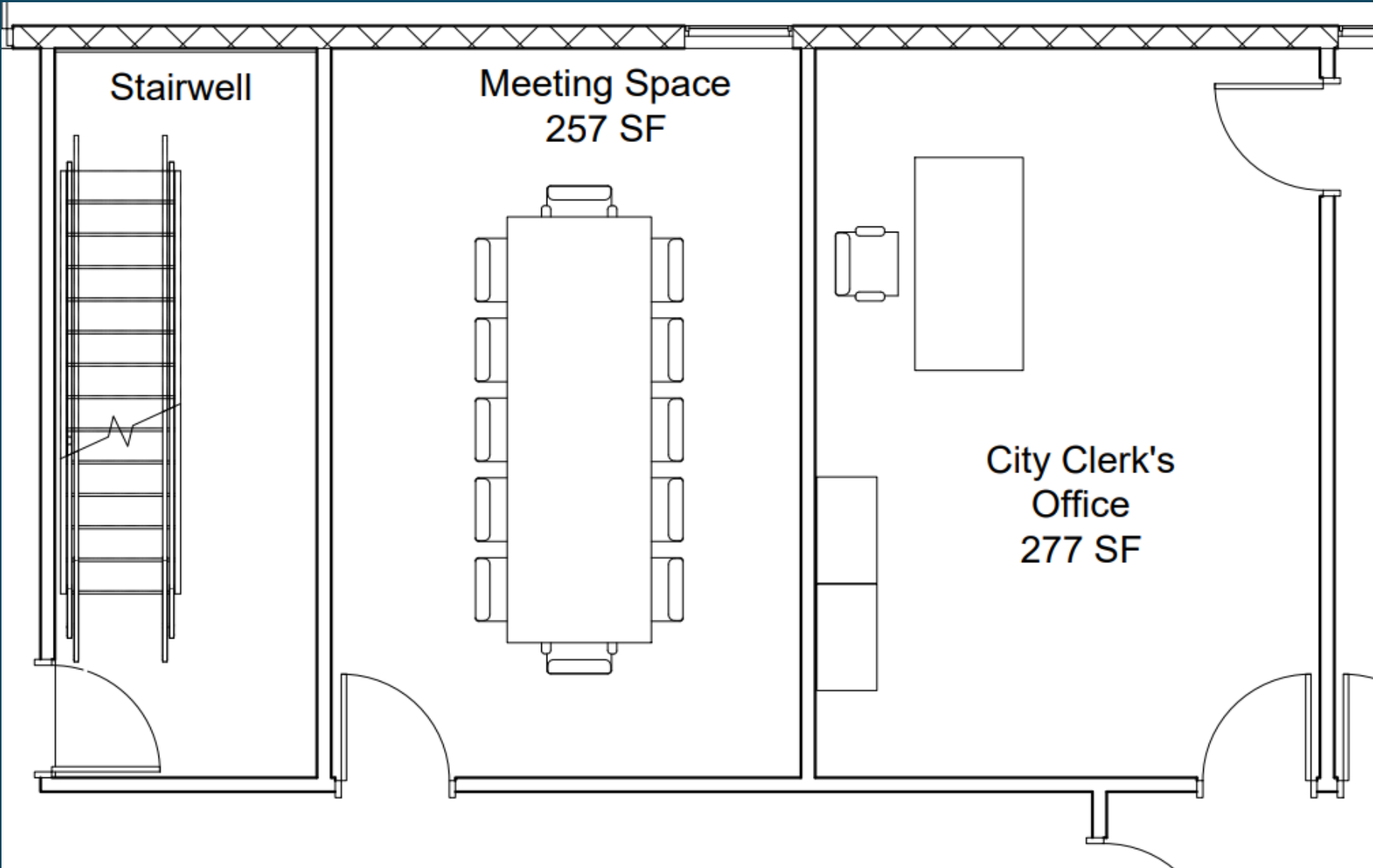
First Floor – West End of City Hall Space



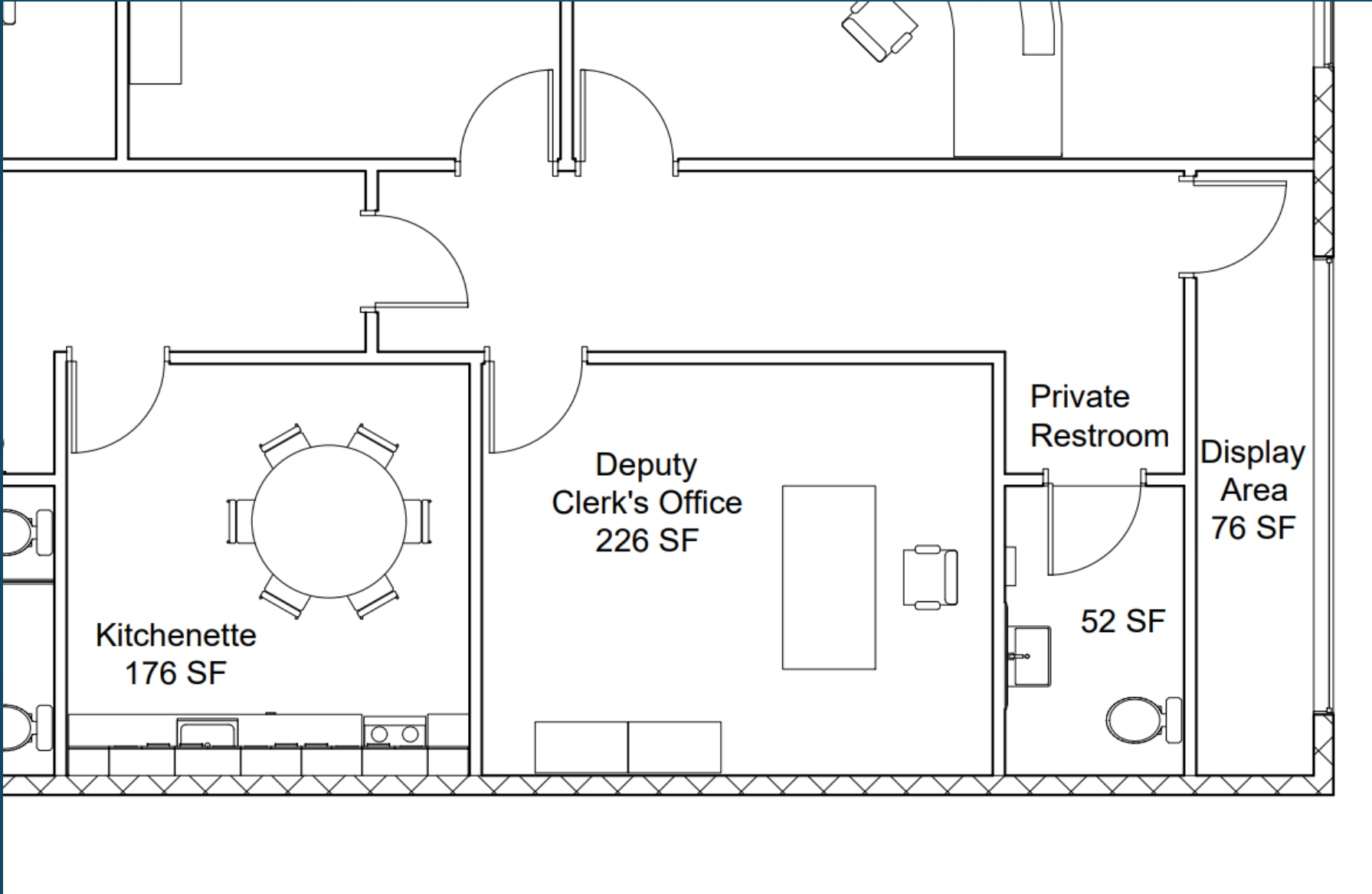
First Floor – East End of City Hall Space



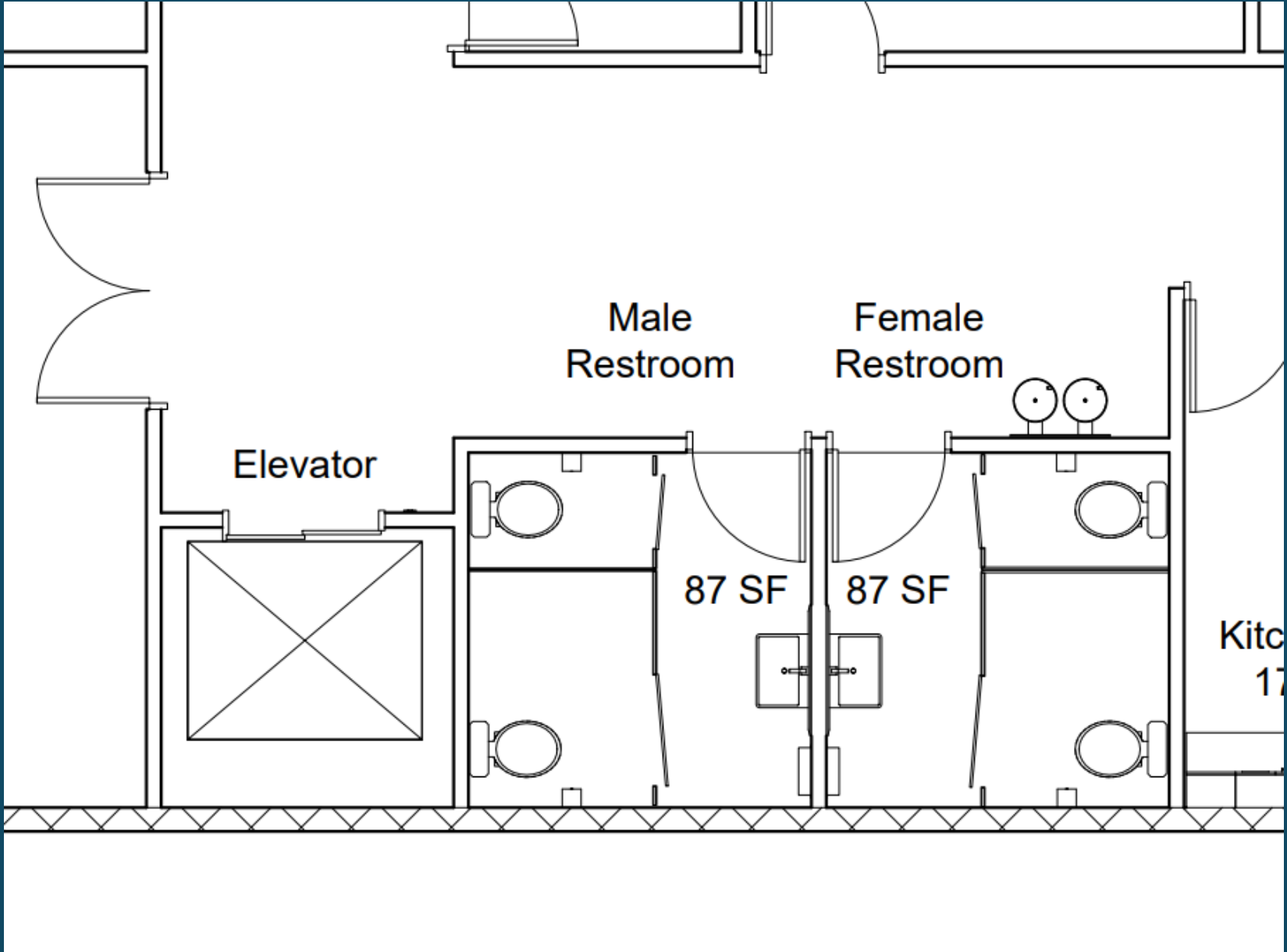
First Floor – East End of City Hall Space



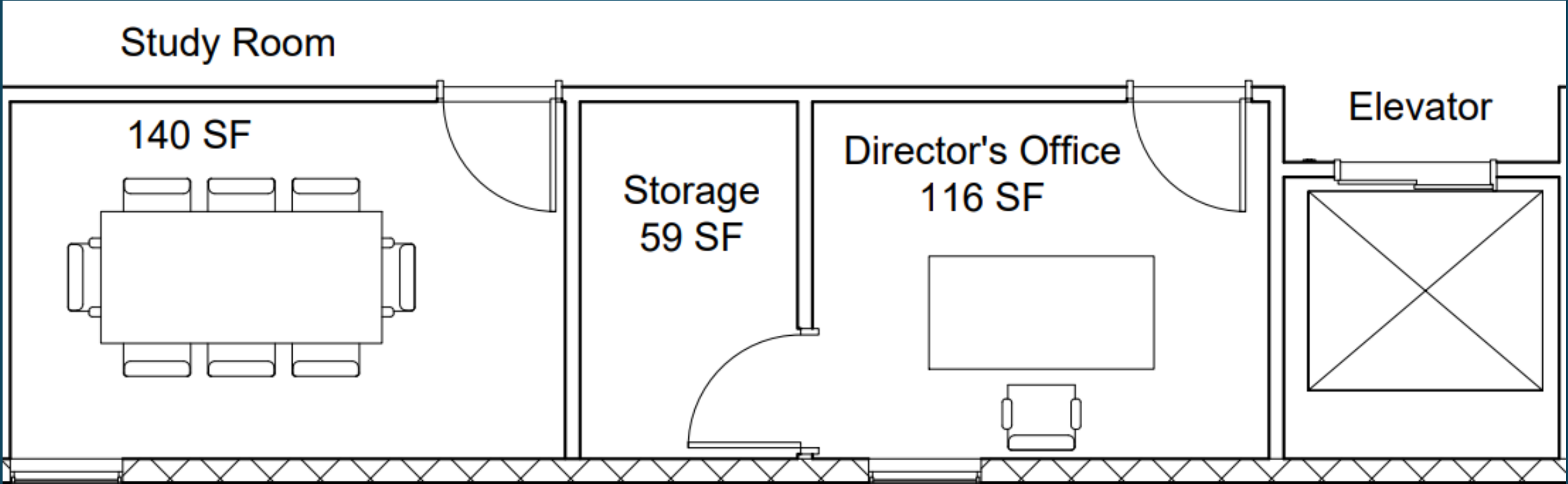
First Floor – East End of City Hall Space



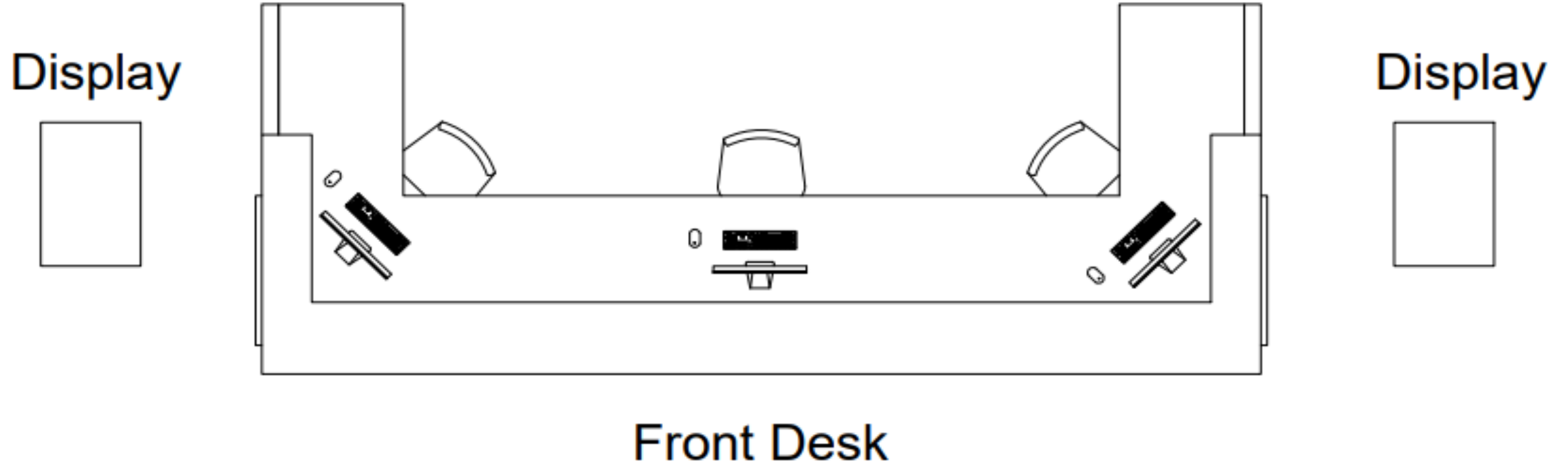
First Floor – East End of City Hall Space



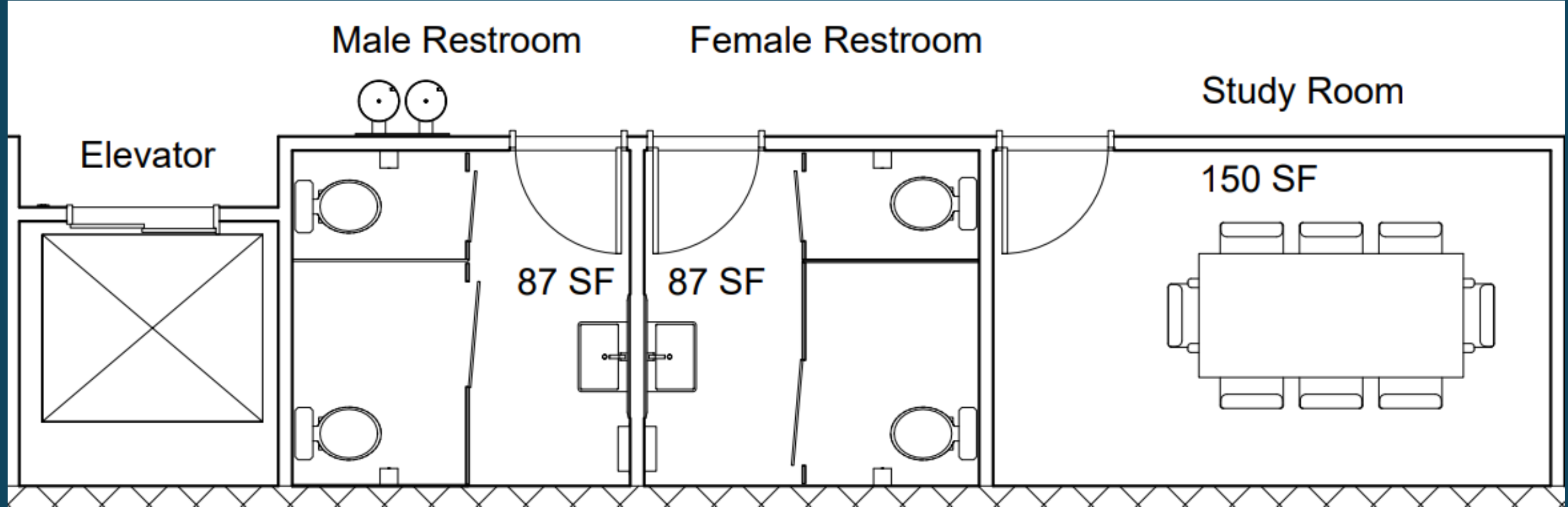
Second Floor – West End of Library Space



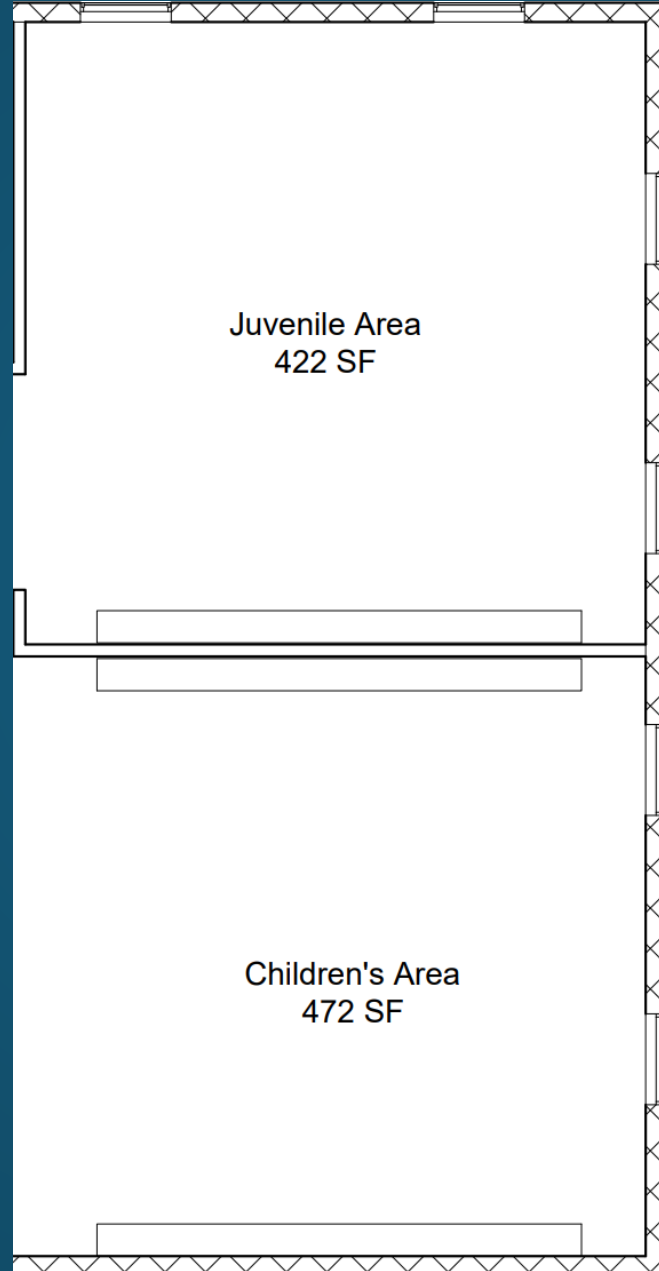
Second Floor - West End of Library Space



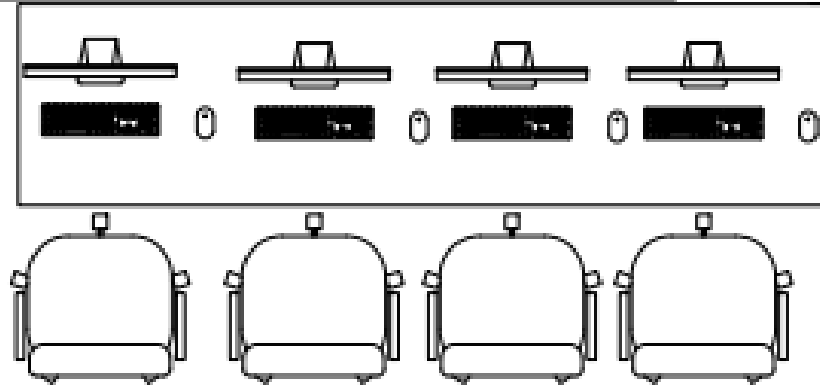
Second Floor – East End of Library Space



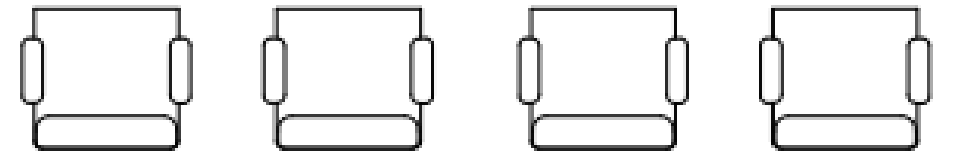
Second Floor – East End of Library Space



Second Floor – East End of Library Space



Computer Area
185 SF



Makerspace Room
165 SF