

IOWA



Park & Forestry Facility



Our Team



Ben Soldwisch

Site Design



Kimberly Alvarado

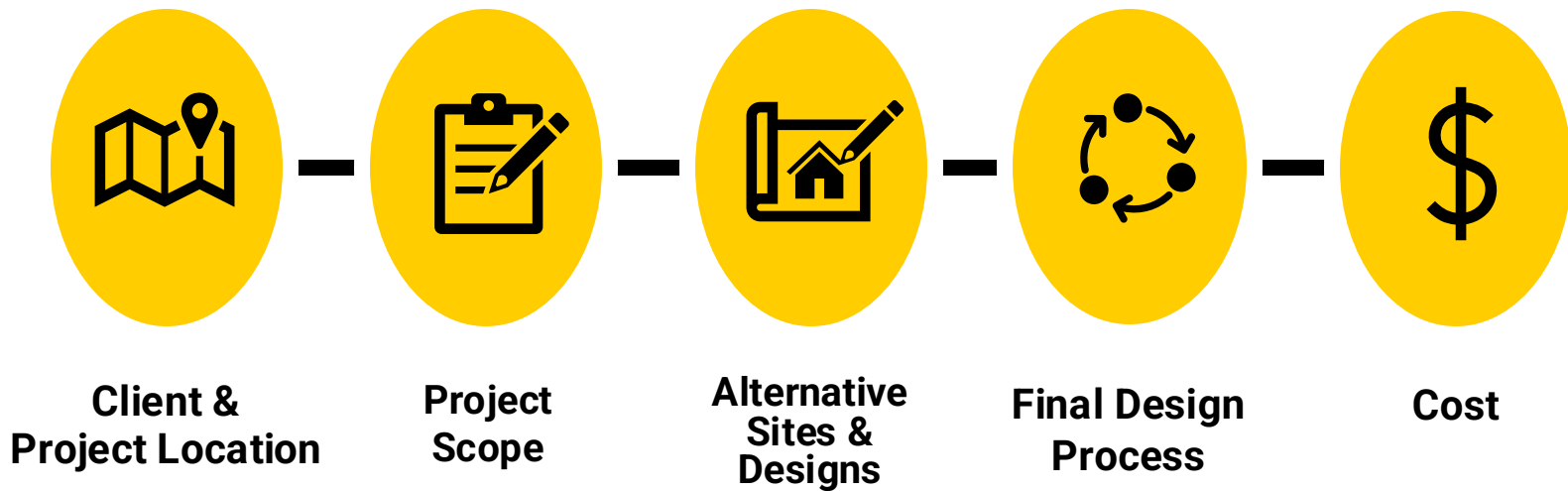
Structural Designer



Cameron Czupek

Water Resources Designer

Overview



**Project
Site**

Project Location



**Dankwardt
& Crapo
Parks**

**2616 S 5th St.
Burlington, Iowa**

Scope of Work

New Centralized Facility

Current Facility Locations



Combined Office Space with a Community Room/Storm Shelter

Current Office Space



Current Community Shelter Area



Integrated Garage Space for Equipment Storage and Maintenance

Current Storage Garage



Current Maintenance Garage

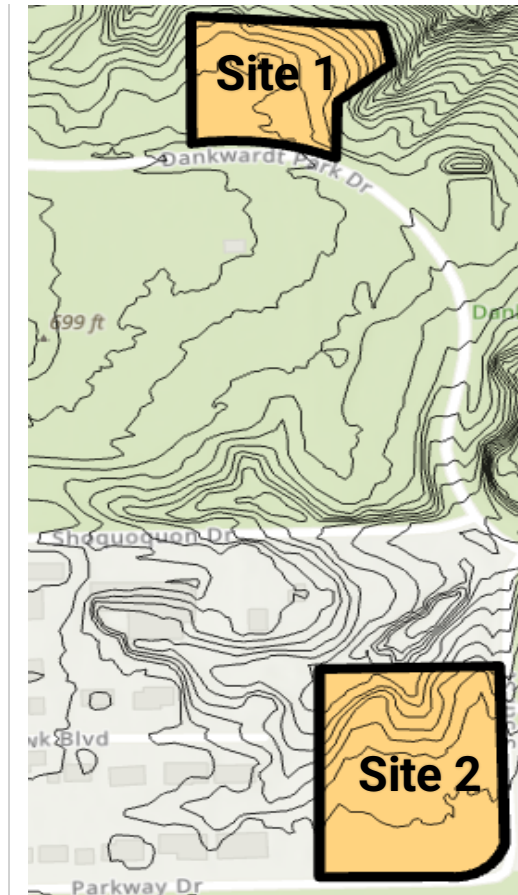


Existing Site Alternatives

Site 1



> 1 Acre



Site 2



2.8 Acres

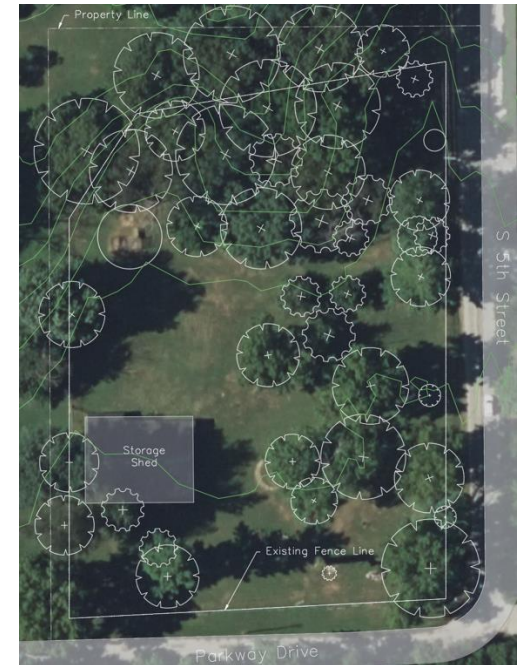
Proposed Site- Site 2: 2.8 Acres



Centralized



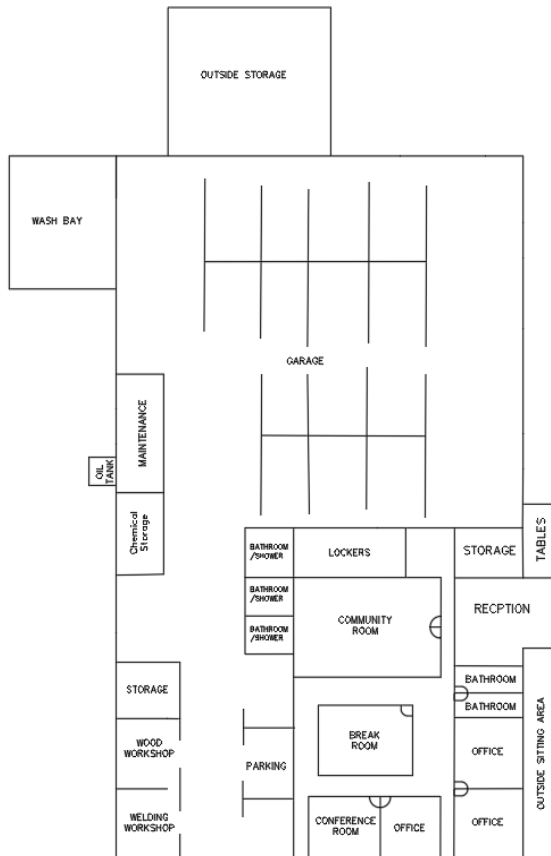
Even Terrain



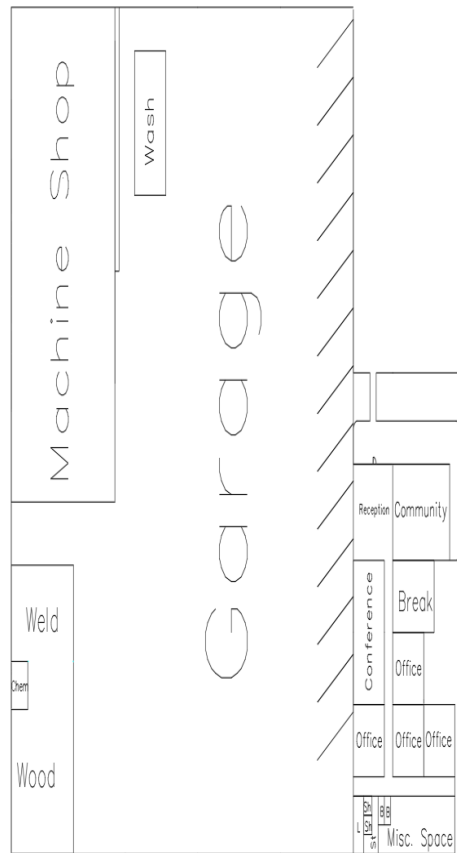
**Small Shed
Fence
Tree/Vegetation**

Design Alternatives

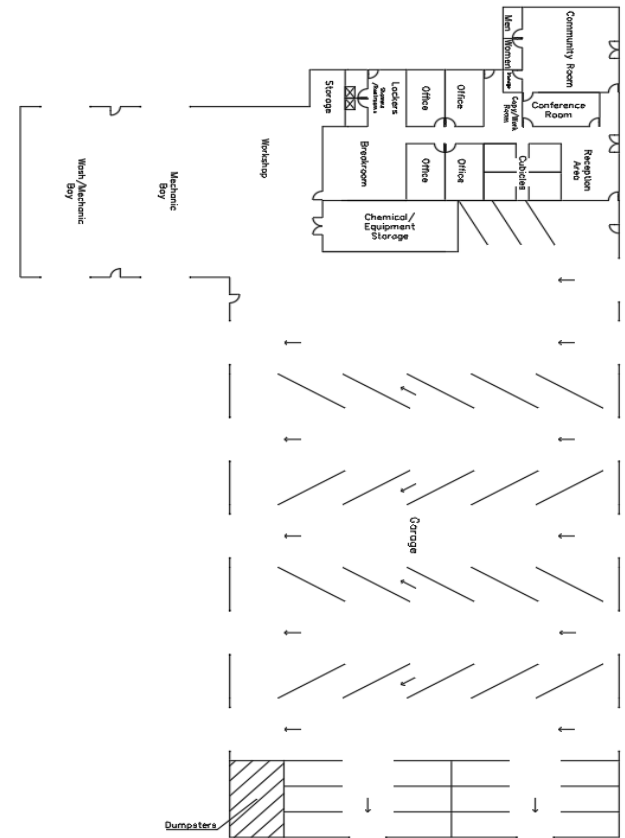
Alternative 1



Alternative 2



Alternative 3



IOWA

Machine Shop

Wash

Garage

Reception

Conference

Office

Wood

Chem

The floor plan of the 10000th Street station is divided into several functional areas:

- Top Left:** A large rectangular area labeled "Mechanical/Work Bay" (10000) with a "Waiting Area" (10000) adjacent to it.
- Top Center:** A "Waiting Area" (10000) and a "Chemical Storage" (10000) area.
- Bottom Left:** A "Small Equipment Storage" (10000) area.
- Center:** A large central hall with a staircase and several "Storage" (10000) areas.
- Right Side:** A complex of rooms including a "Reception/Work Space" (10000), a "Waiting Area" (10000), a "Restroom" (10000), and a "Mechanical/Work Bay" (10000).

A North arrow is located in the bottom right corner of the plan.

Workshop

Machine Bay

Breakroom

Office

Office

Office

Office

Conference Room

Reception Area

Garage

Dumpsters

Chemical/Equipment Storage

Locker Room

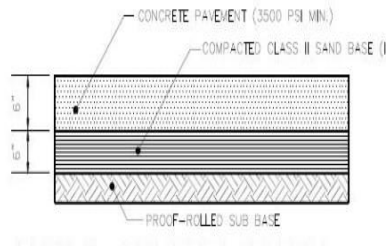
Men

Women



Site

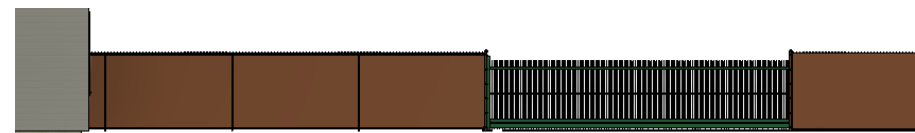
Sidewalk Typical



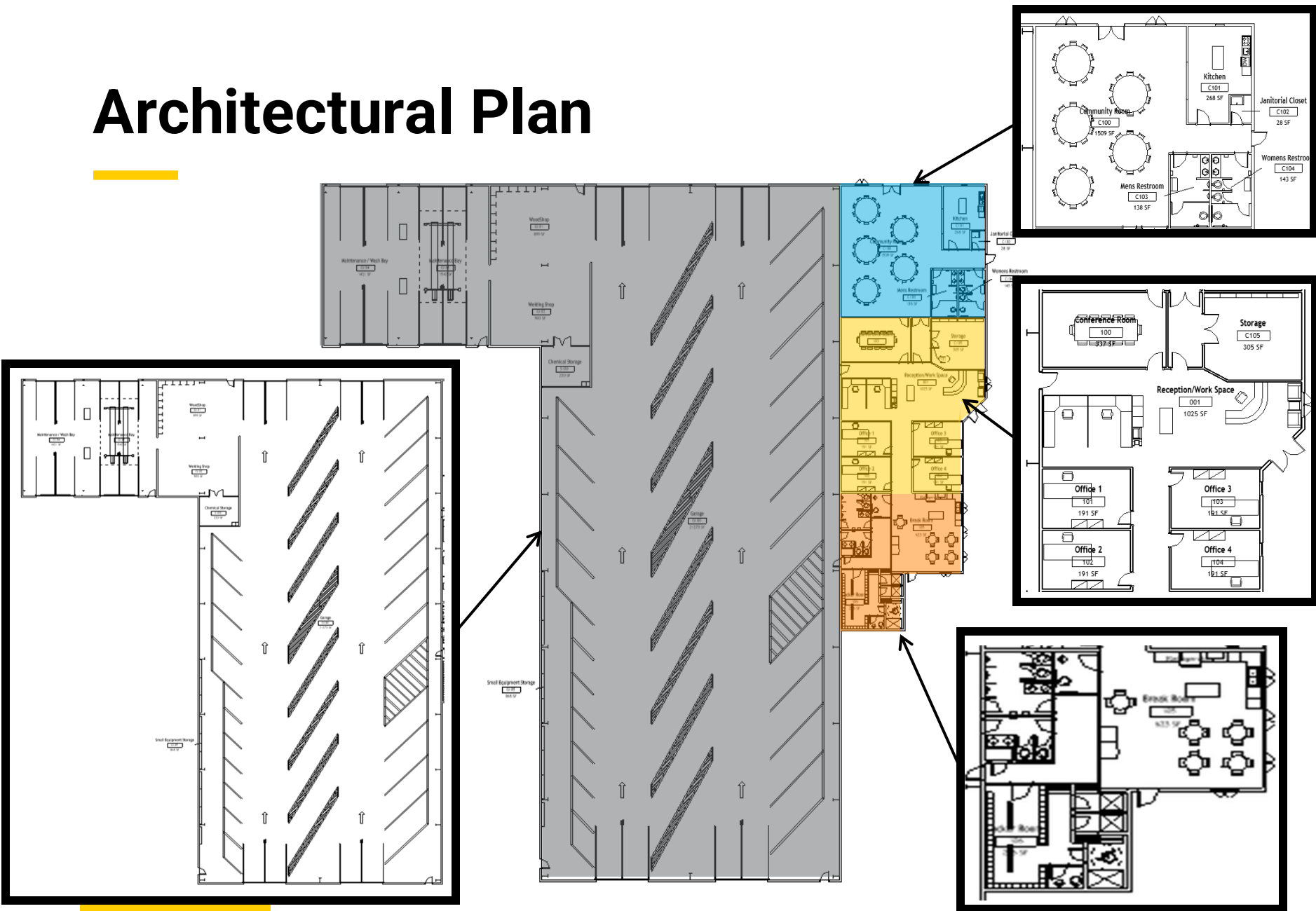
Arborvitae line



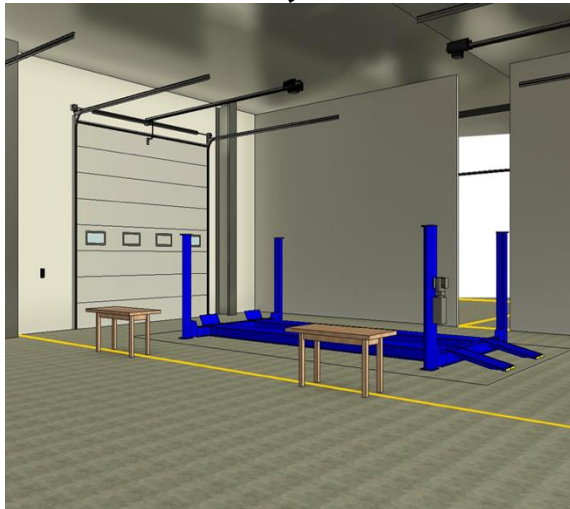
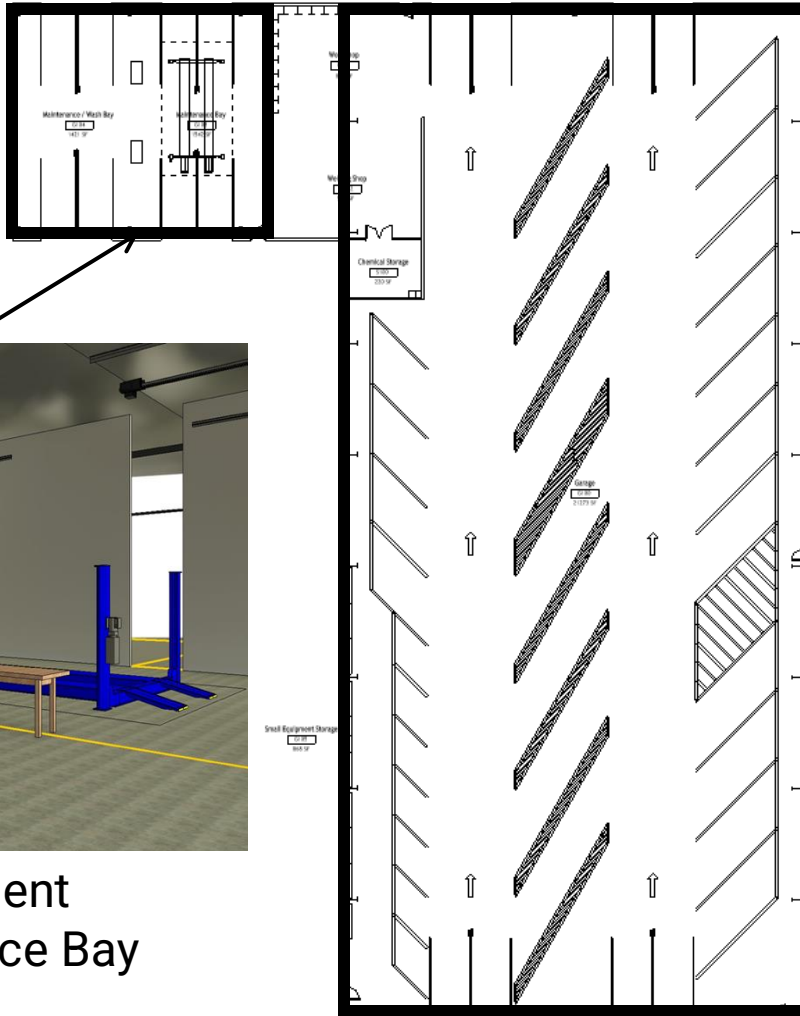
Fenced Perimeter with Access Gates



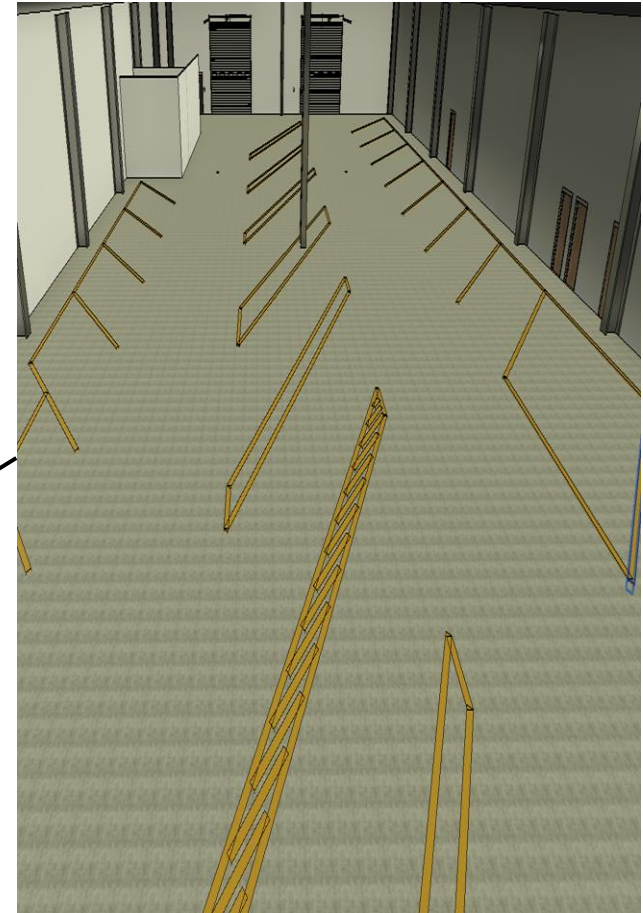
Architectural Plan



Garage & Maintenance Bays



Equipment
Maintenance Bay



Equipment Parking

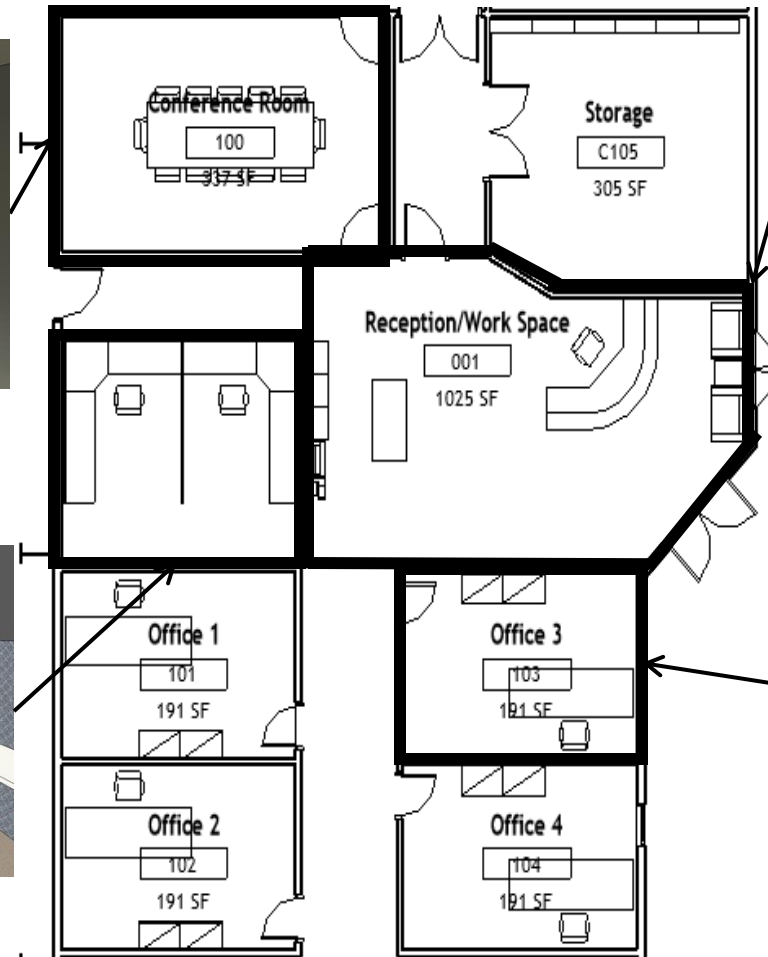
Office Space



Conference Room



Cubicle Workspace



Reception Space



Typical Office

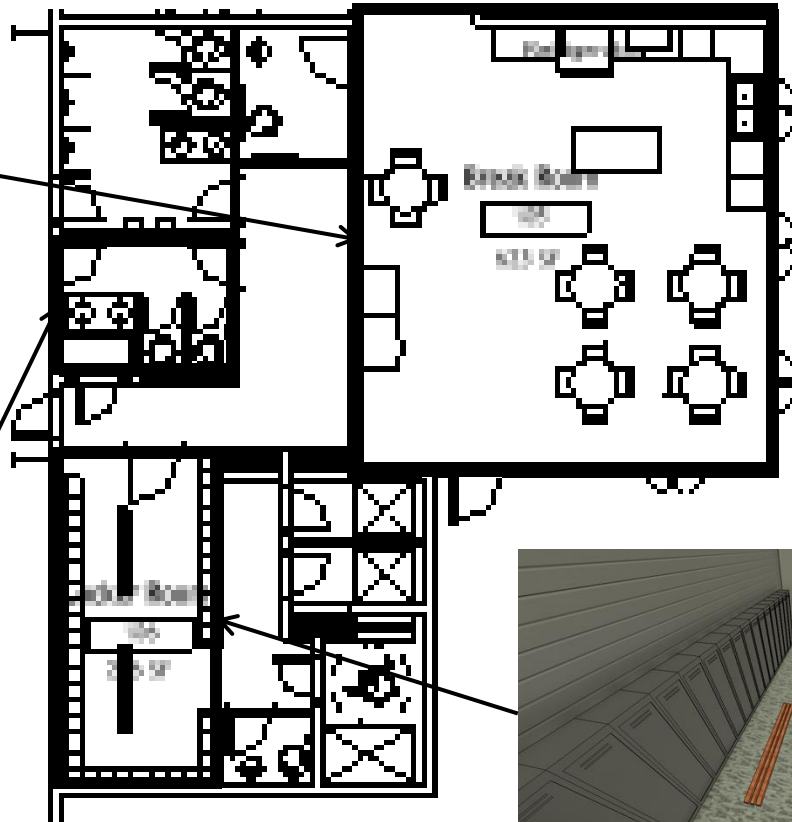
Worker Amenities



Break Room Seating



Bathroom

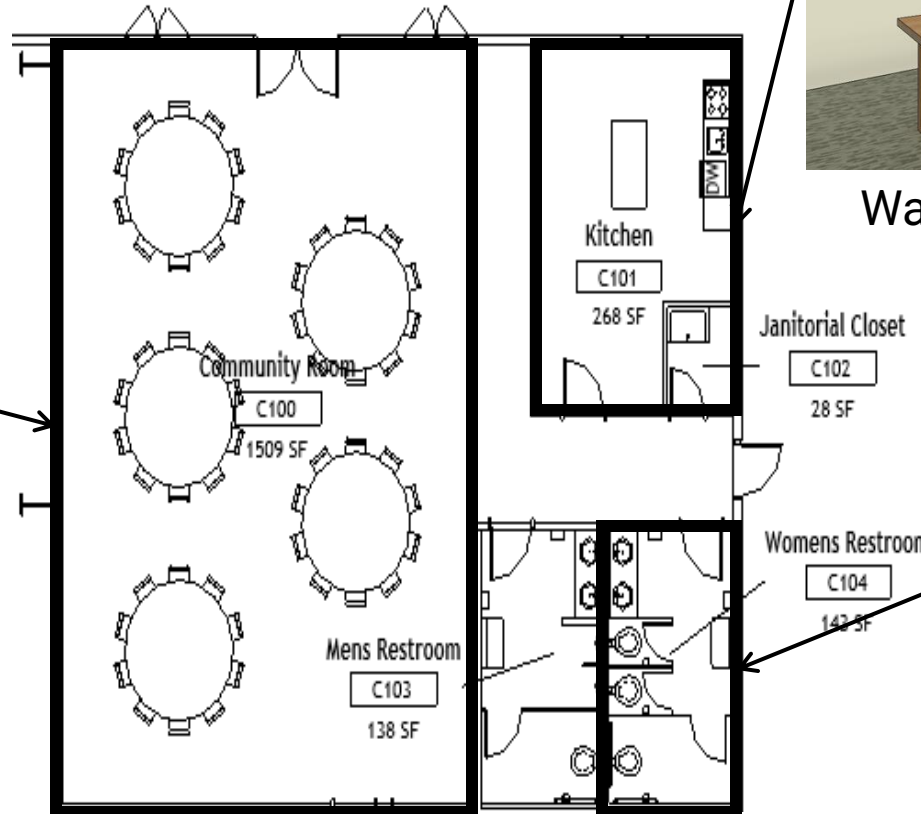


Locker Room

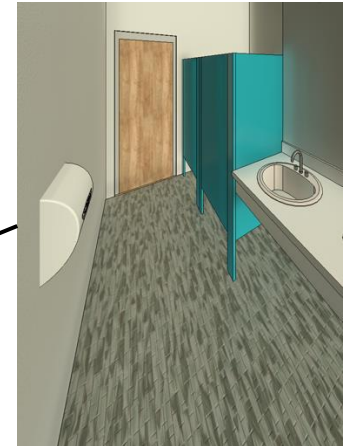
Community Room



Community Room

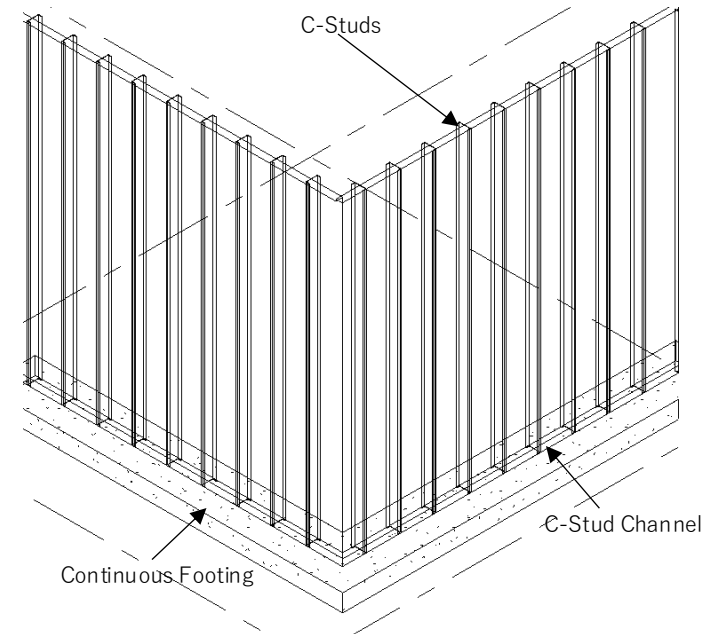
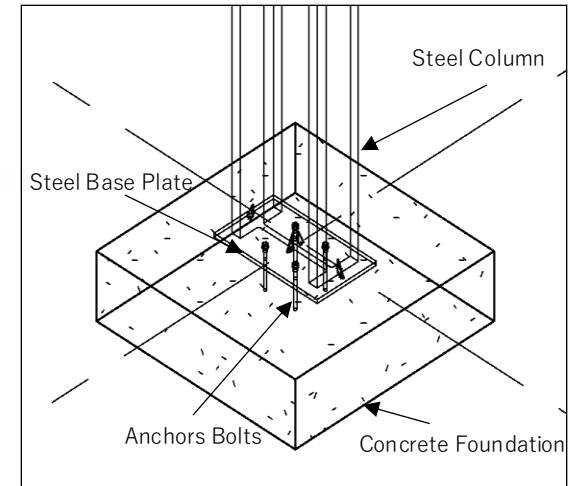
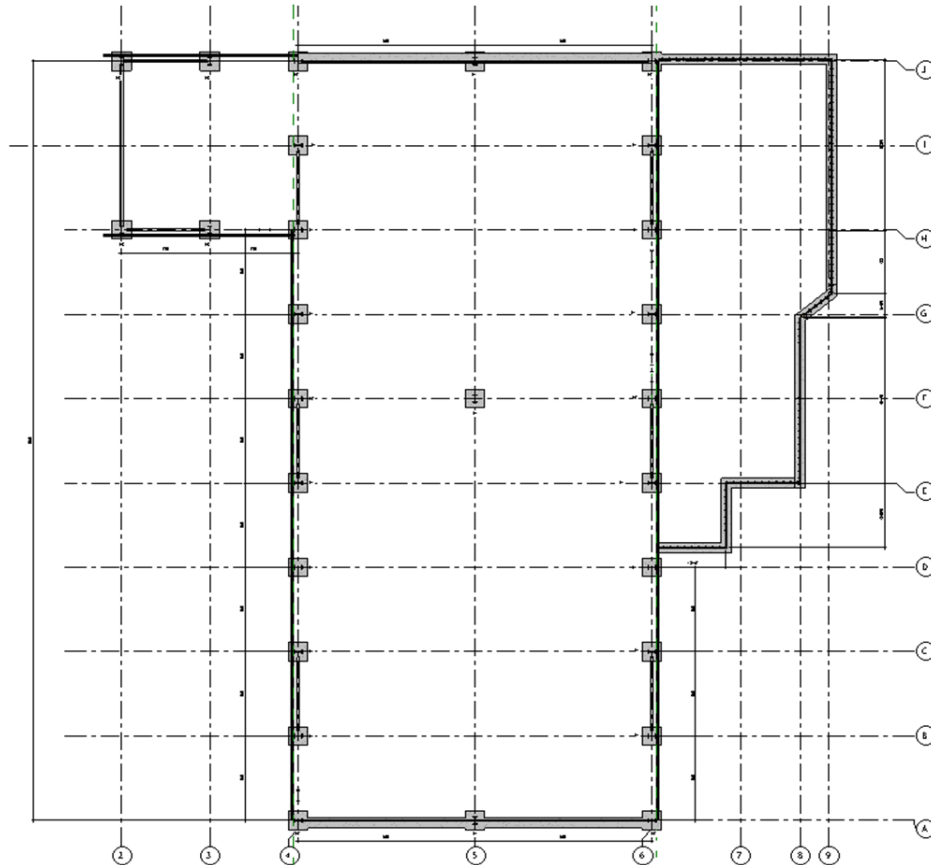


Warming Kitchen

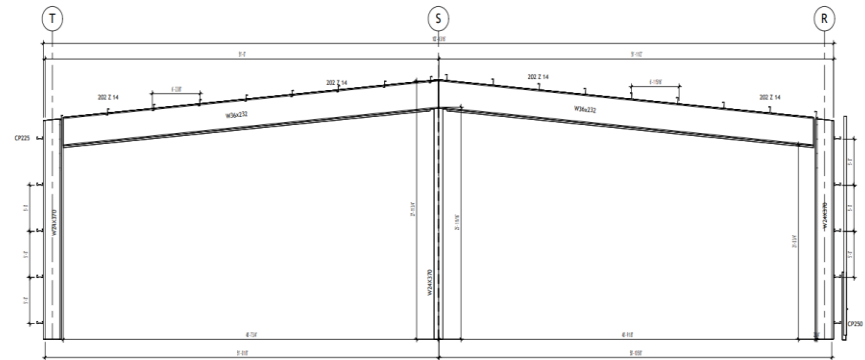
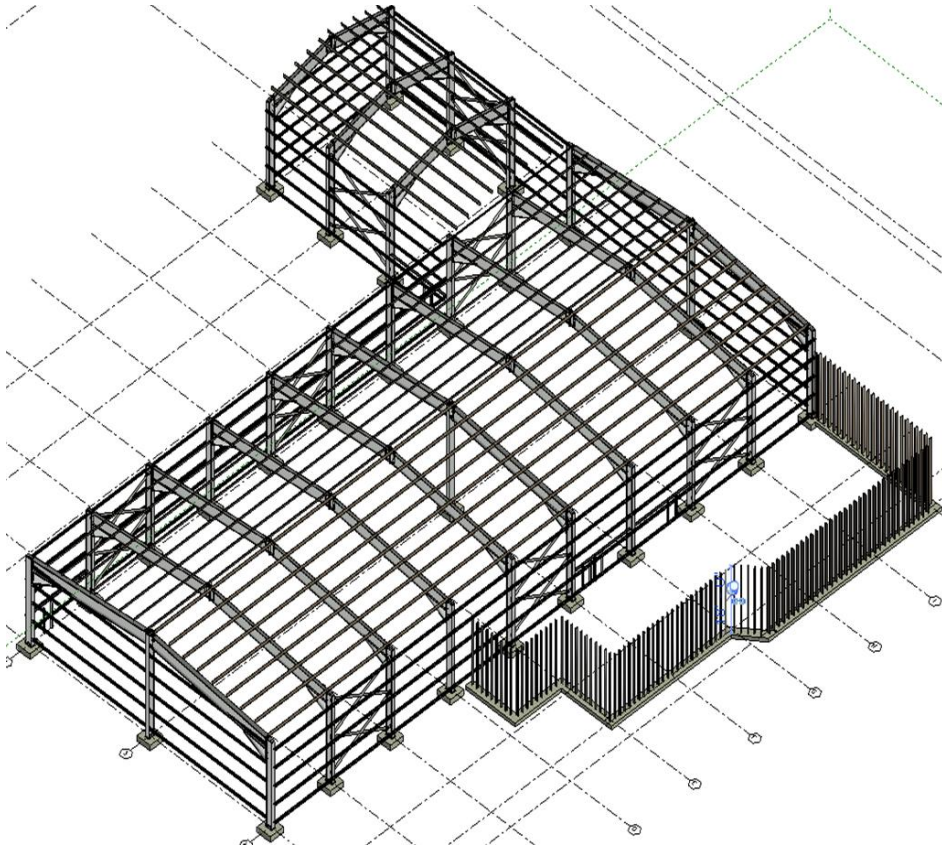


Bathroom

Foundations

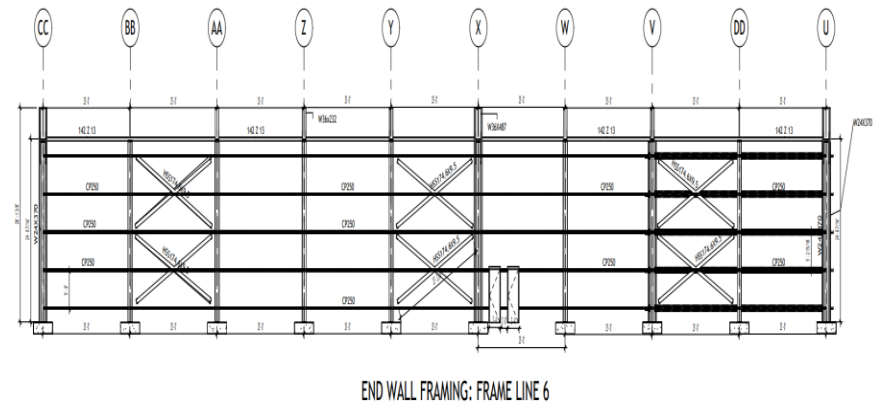


Structural Frame

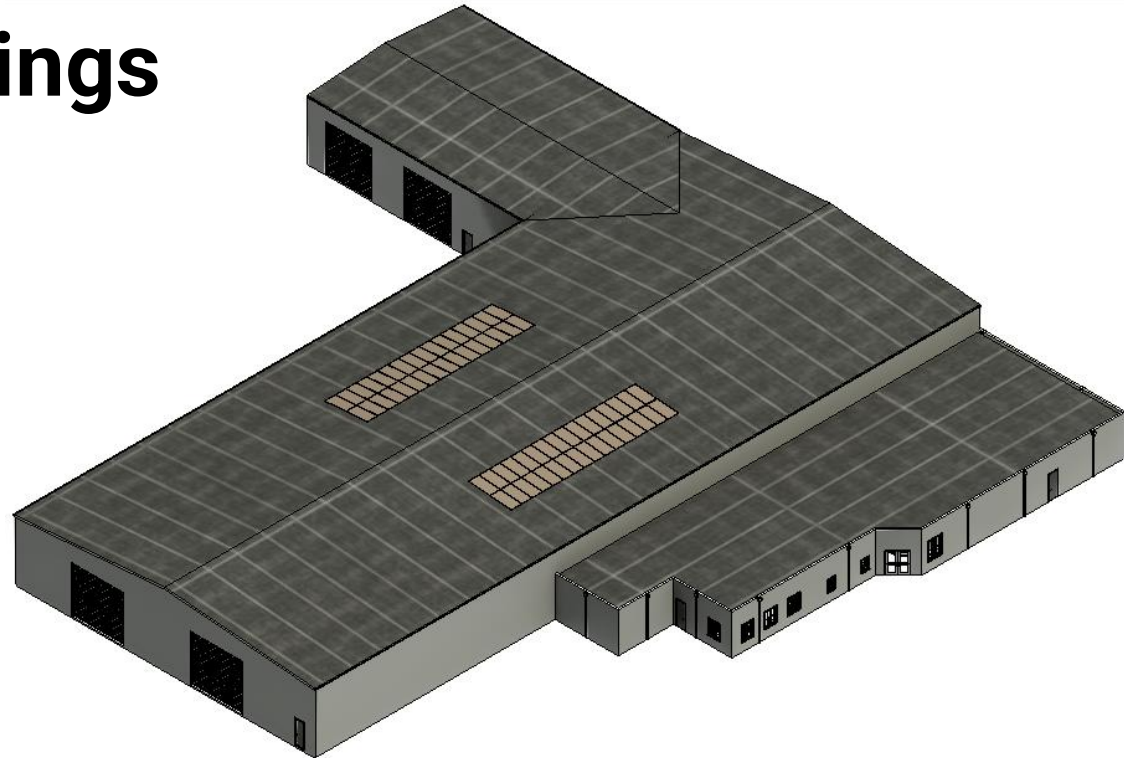
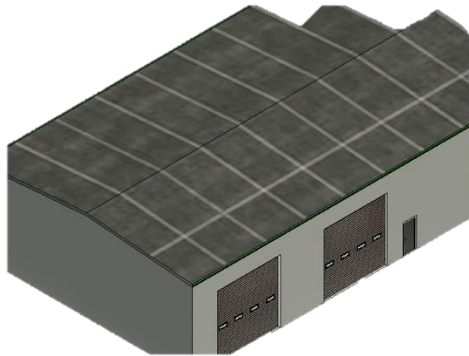


STRUCTURAL FRAMING :FRAME LINE A

IOWA



Exterior Renderings



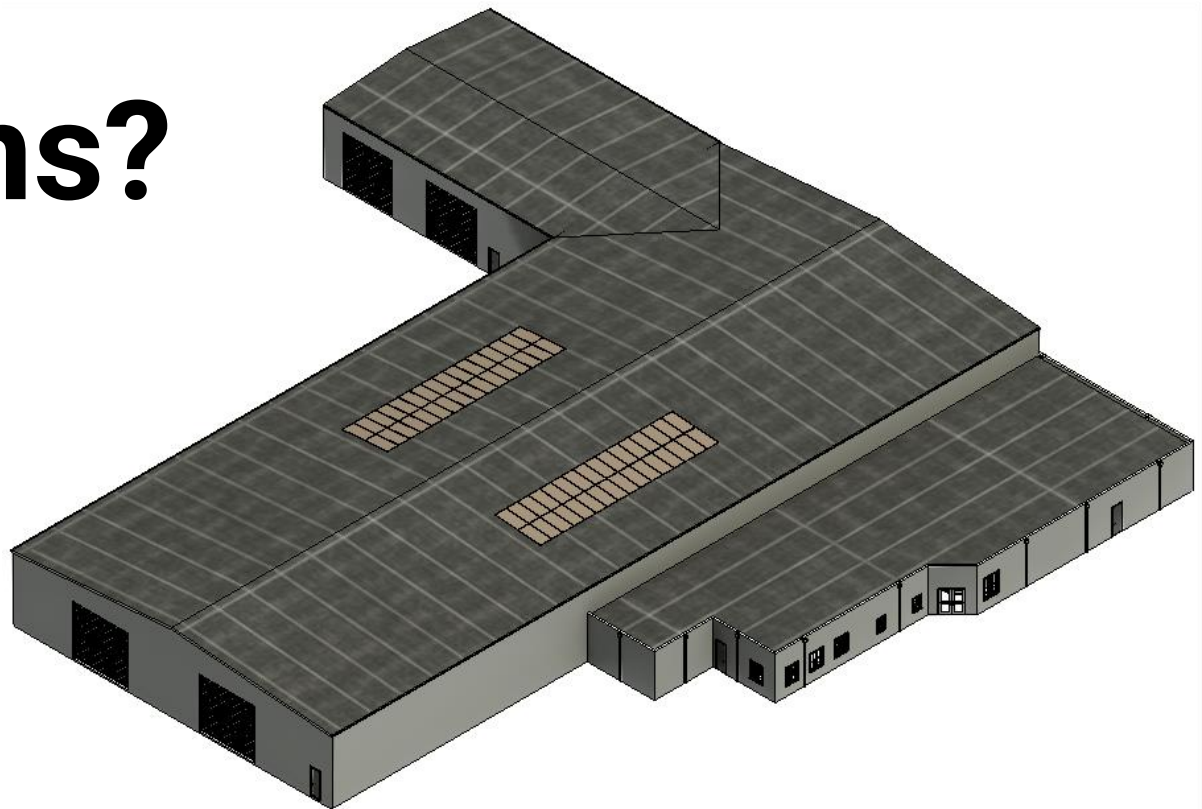
Construction Cost Estimation

Type		Total
Demolition	\$	28,000
Site	\$	300,000
Structural	\$	643,874
Architectural	\$	2,056,849
MEP	\$	52,000
Subtotal	\$	3,080,723
10% Contingency	\$	308,072
Total Construction Cost	\$	3,388,795

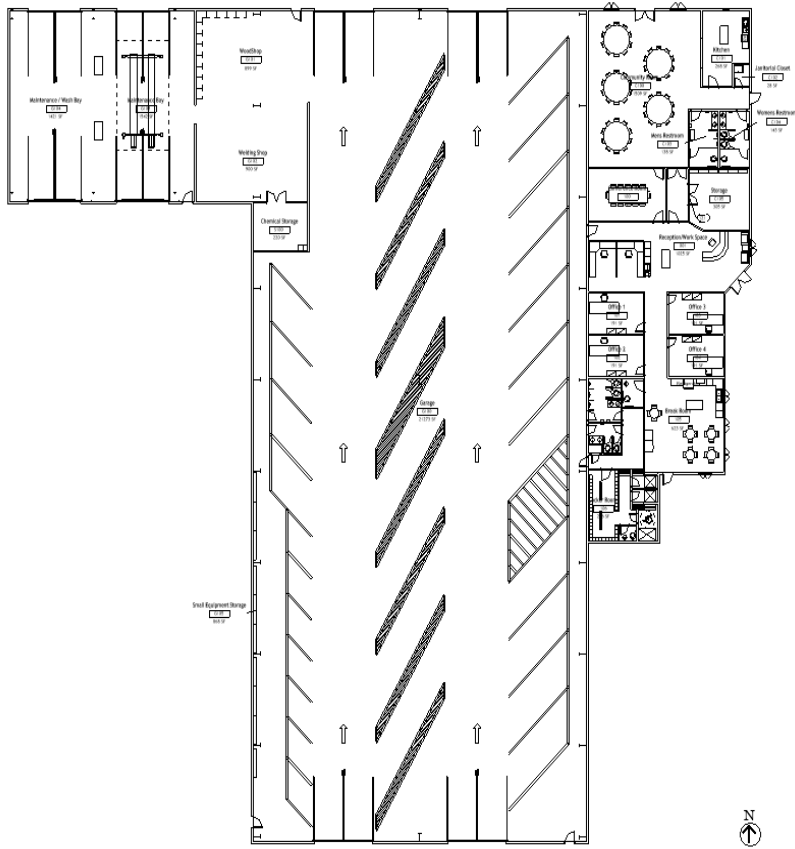
Park & Forestry Facility

Questions?

→ uiowa.edu



Floorplan



Site Layout

