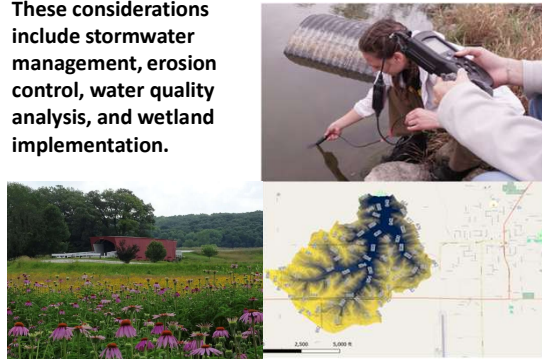


Location and Purpose: The Lake Fisher Recreation Area enhancement project reimagines the park with expanded RV campgrounds, recreational fitness areas, improved water access, and an interconnected ADA-compliant trail system, while an environmental analysis ensures expanded recreation and community use still protect the lake's natural resources.

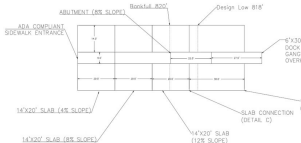
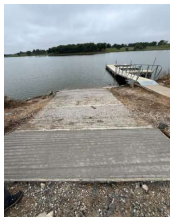
Environmental Considerations 11 16 17

These considerations include stormwater management, erosion control, water quality analysis, and wetland implementation.



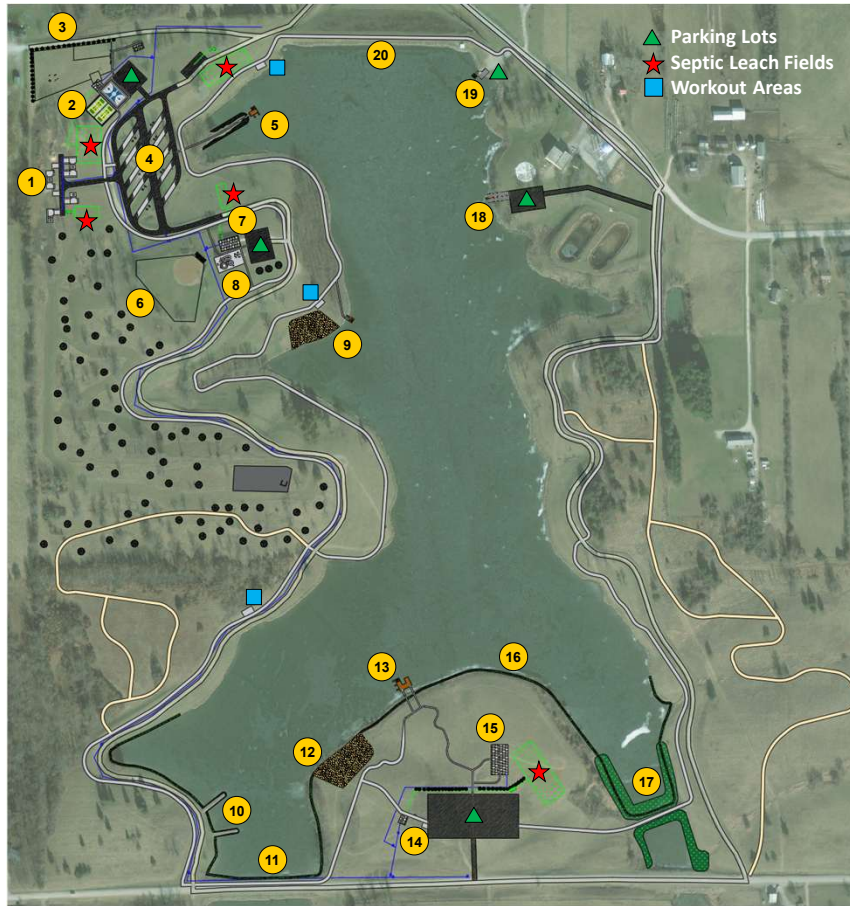
Water Access 5 9 10 12 13 18 19

New water access features include upgraded boat ramps, kayak launches, multiple boat docks, and beaches providing accessible, convenient entry points to Lake Fisher for users.



Recreational Areas 3 6

The park's main recreation zone includes a basketball court, dual-use tennis/pickleball courts, separate dog parks, a restroom facility, a softball field, and a green playground, creating an active gathering space for visitors of all ages.



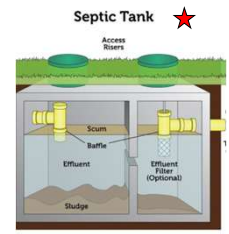
ADA Trail System

A 2.5-mile ADA-compliant all-purpose trail system loops around Fisher Lake. Features included are benches, workout zones, and path branches to allow accessible connectivity to all park regions.



Restrooms, Showers, Laundry, Septic 2 7

The restrooms highlight accessibility and practicality, and include septic tanks and leach fields.



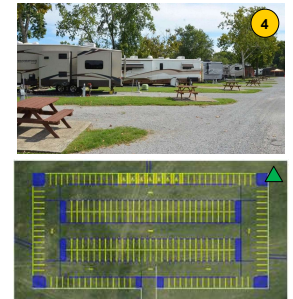
Cabins 1

2 Bedroom, 1 Bathroom Cabins are designed to host visitors to the lake year-round.



RV and Parking

The RV Lot includes electric and water hookup, campfire, and benches. Parking accommodates the dog park, softball field, east boat ramp, and south peninsula.



Event Venue

The venue is a large open concept pavilion with a natural feel.

