

West Branch: Sanitary Trunk Sewer

Mia Smith, Spencer Brown, Sylvia Tumusiime

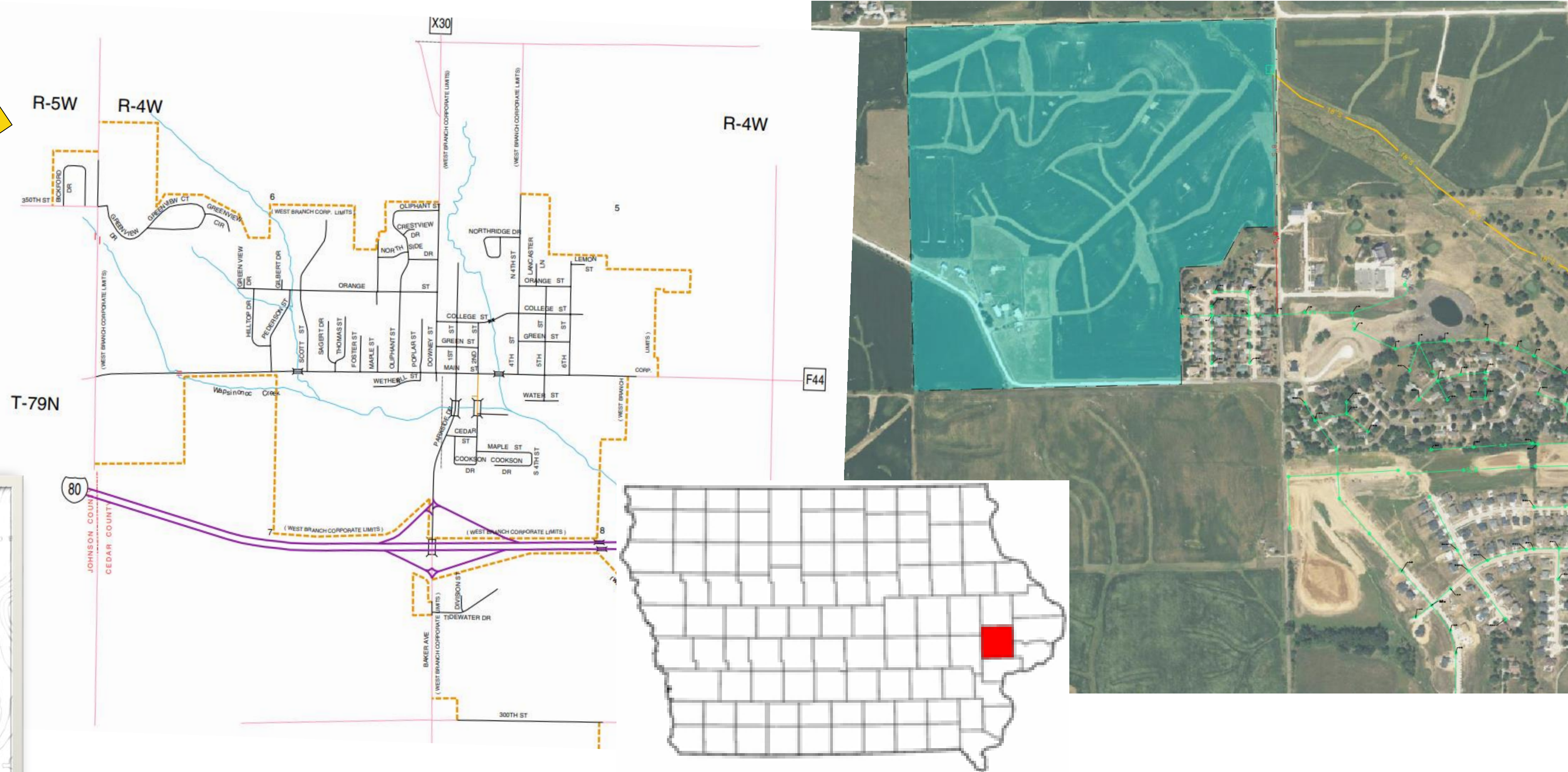
Collage of Engineering

University Of Iowa

Figures 1a & 1b: Project Location

Site Location

The project area is west of Cedar Johnson Road in Johnson County, near the Cedar County border. It covers 143 acres, extending north of 350th St. NE and past 340th St. NE to allow for future growth.

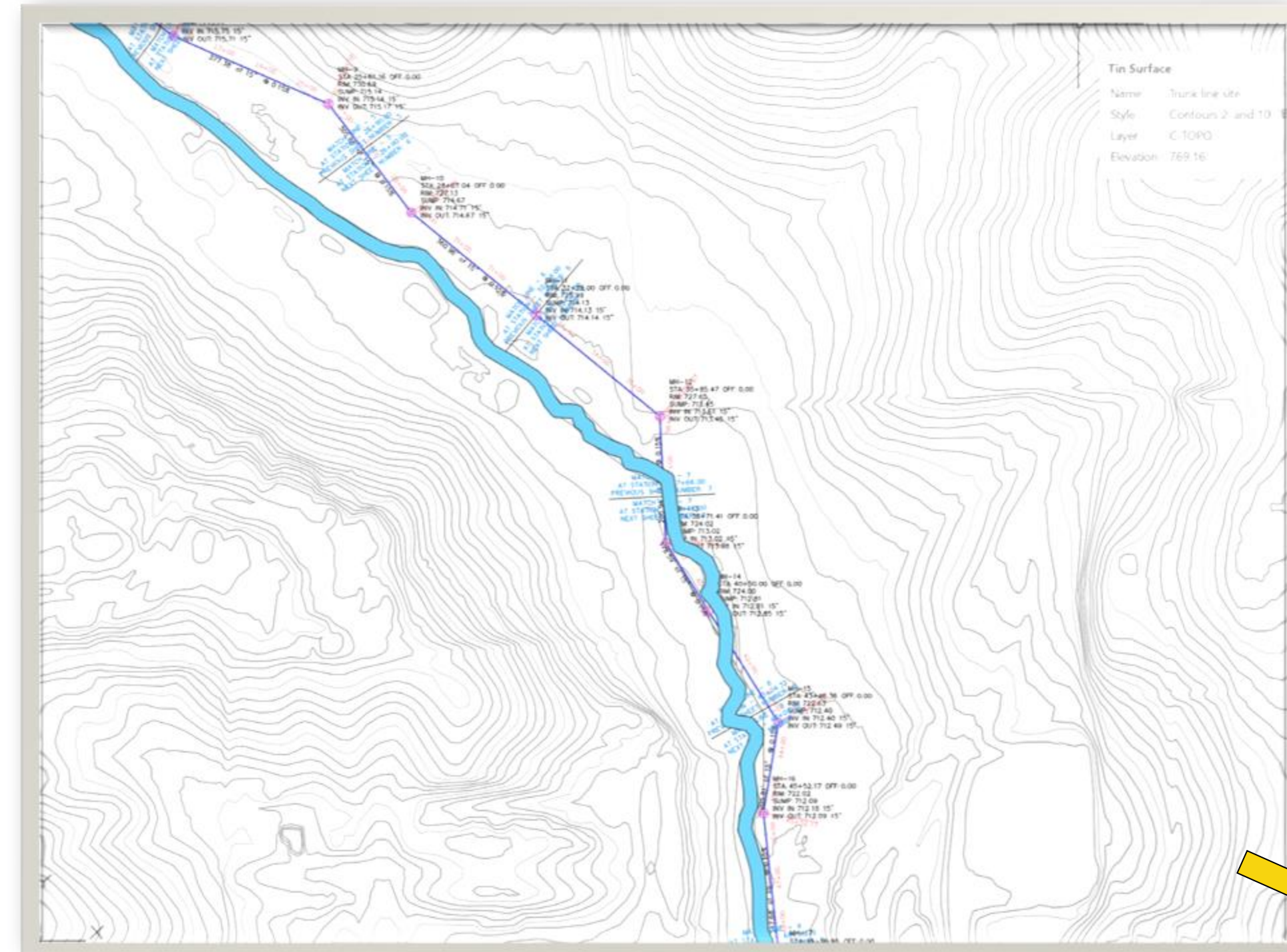


Project Scope

The scope includes designing a trunk sewer to carry sanitary flow from the proposed parcel to an existing sewer connection point south of West Main St.



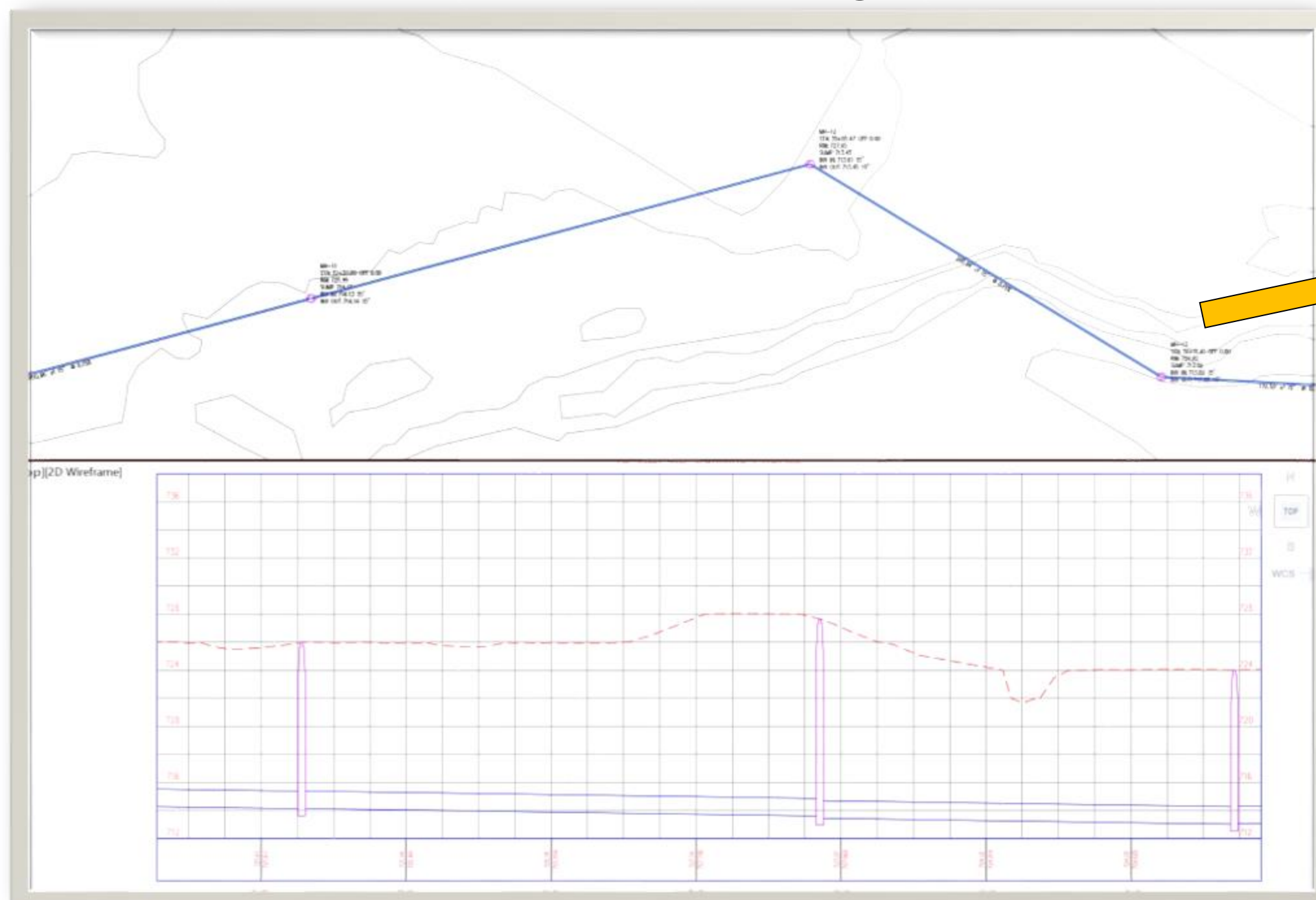
2a: Pipe Path along stream



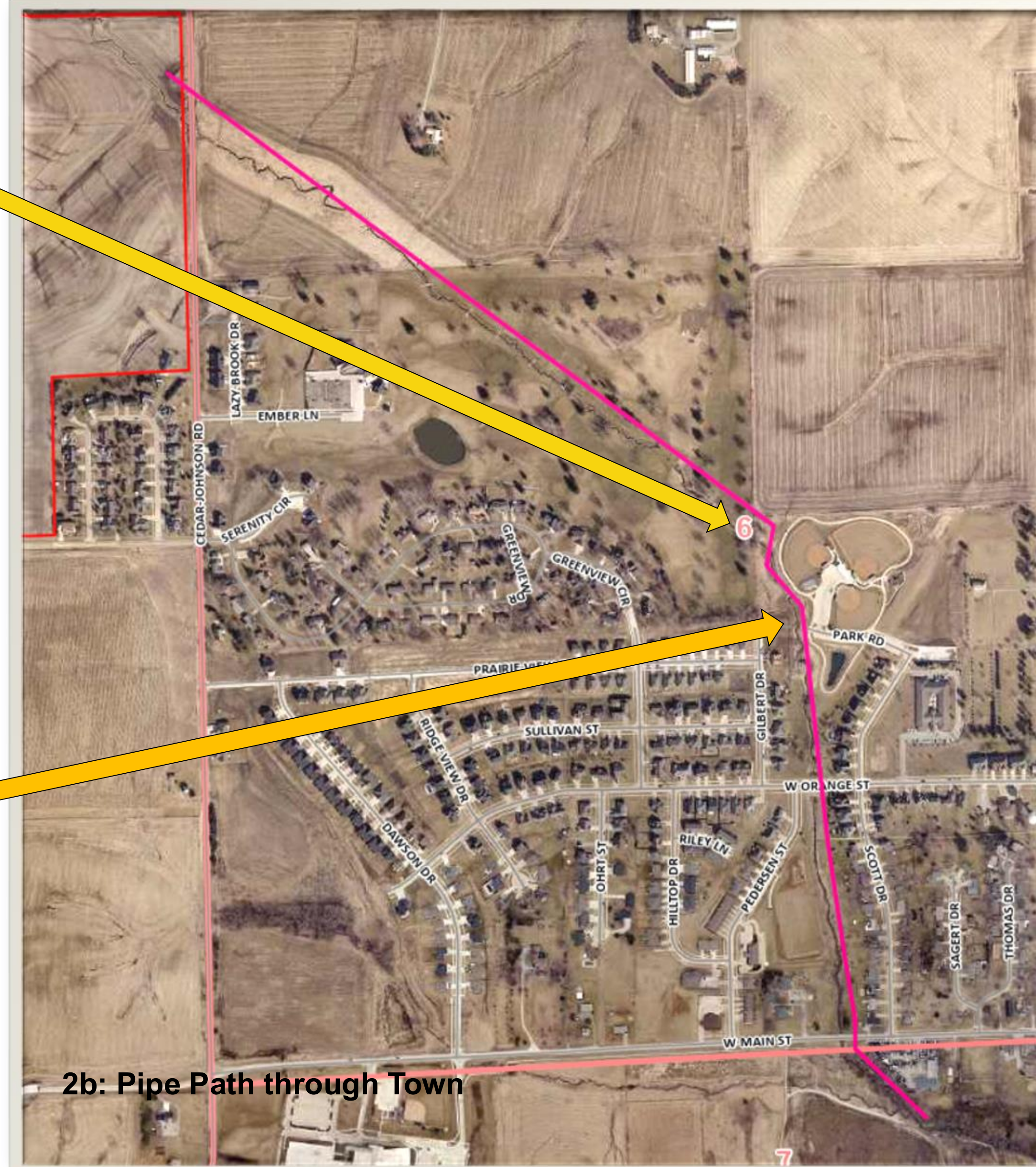
Final Design

The final design includes a 15-inch PVC trunk sewer running about 6,706 feet from the project site to the designated connection point south of town.

2c: Plan & Section view of stream crossing



Figures 2a, 2b, 2c: Final Design



2b: Pipe Path through Town

Project Scale

This project will add 3.21 MGD of capacity to West Branch, supporting future growth and accommodating over 2,550 medium-density housing units.

3a: Overland Flow Rout of Calculated Area



References & Specifications

