



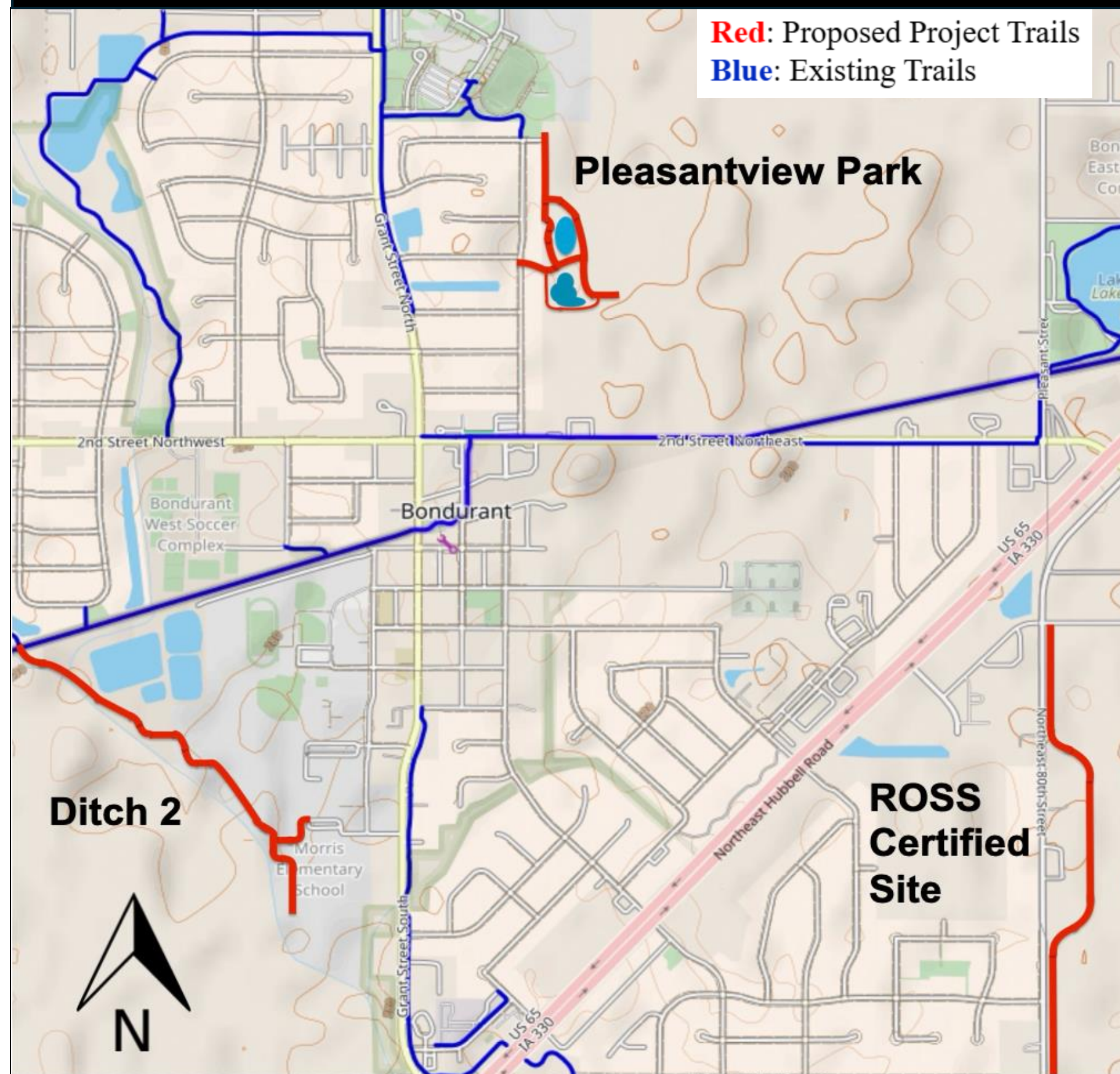
Project Overview

The City of Bondurant is expanding its trail network to improve connectivity between neighborhoods, schools, parks, and regional destinations. This project designs safe, sustainable, and accessible multi-use trails at three key sites.

Project Objectives

- Broader Connectivity**
- Multi-Use Trails**
- Safety and Equity**
- Sustainability**
- Community Engagement**

Site Overview



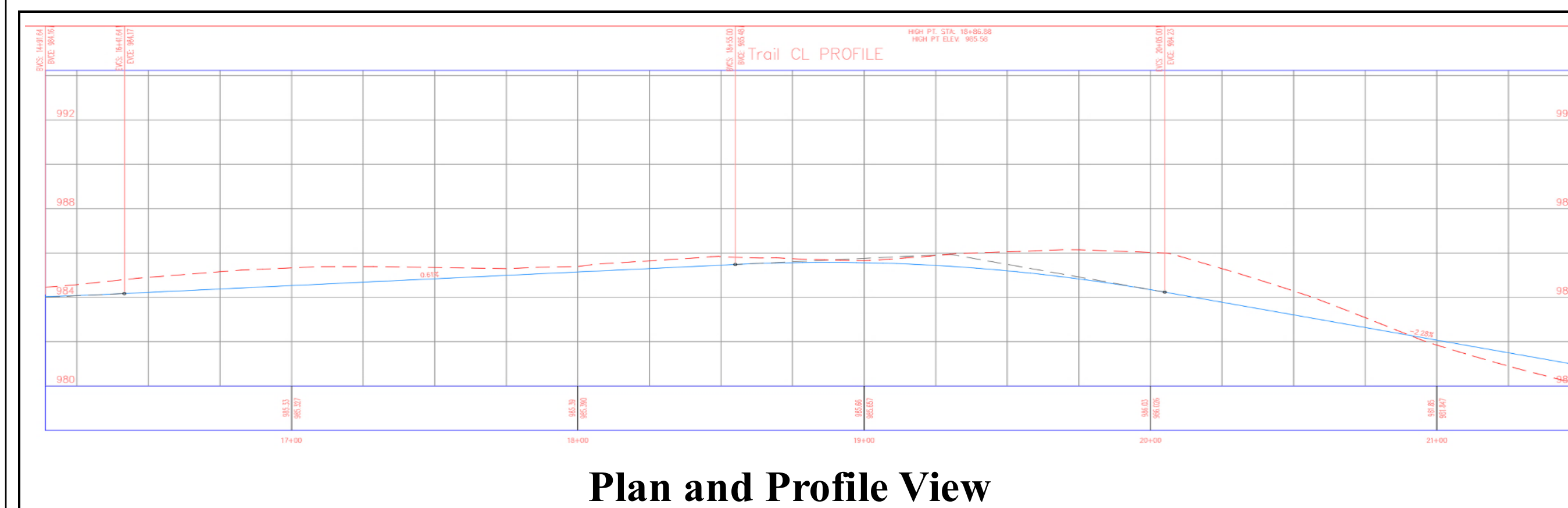
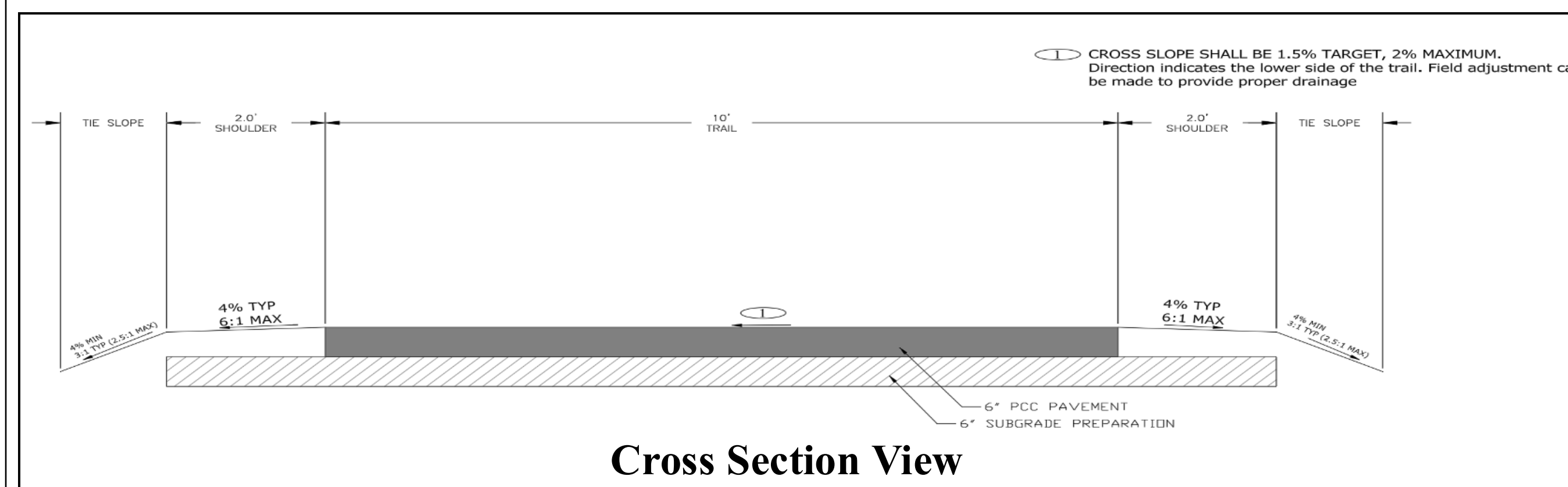
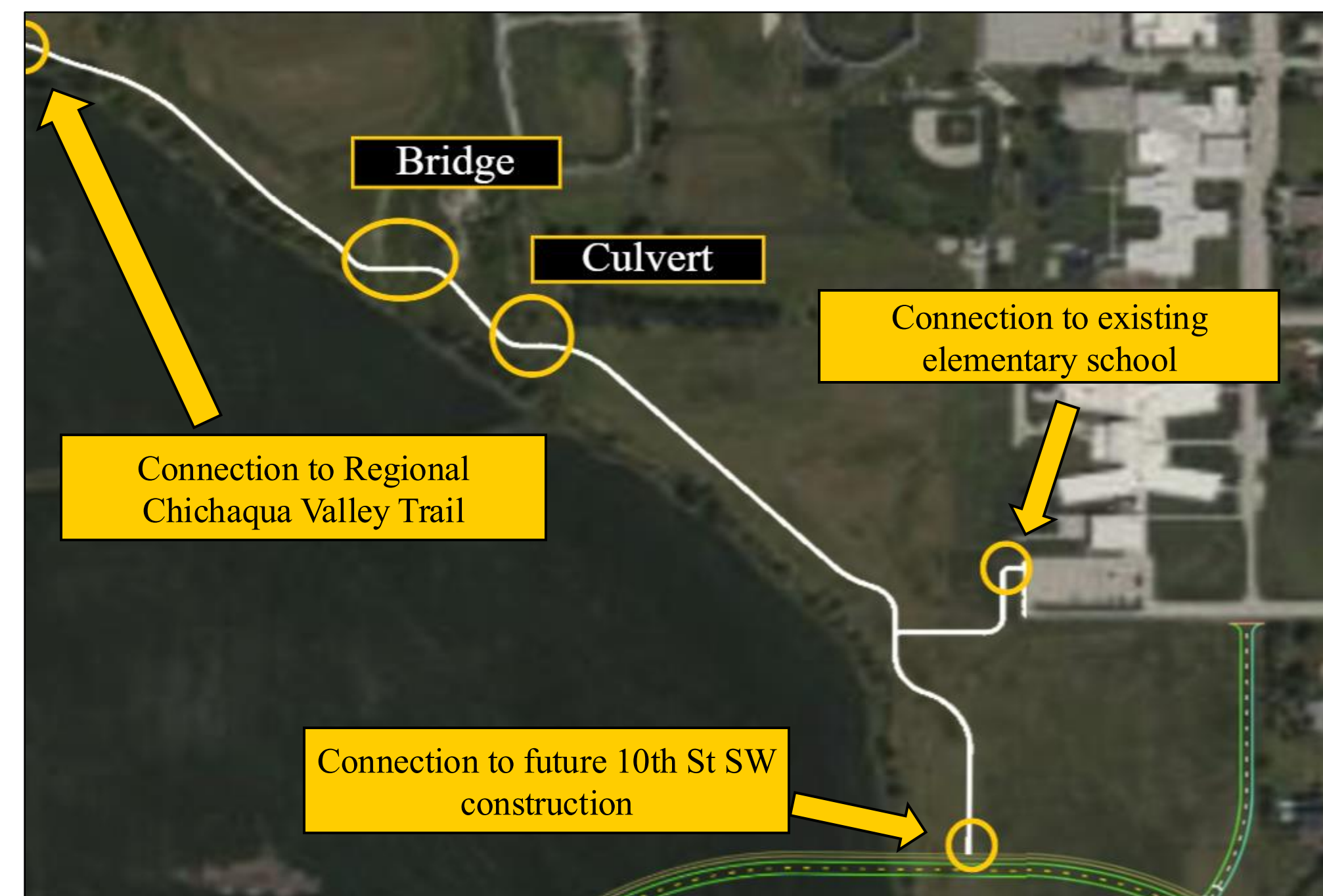
Aesthetic Considerations



Oak Trees
Linden Trees
Native prairie

Final Design Elements

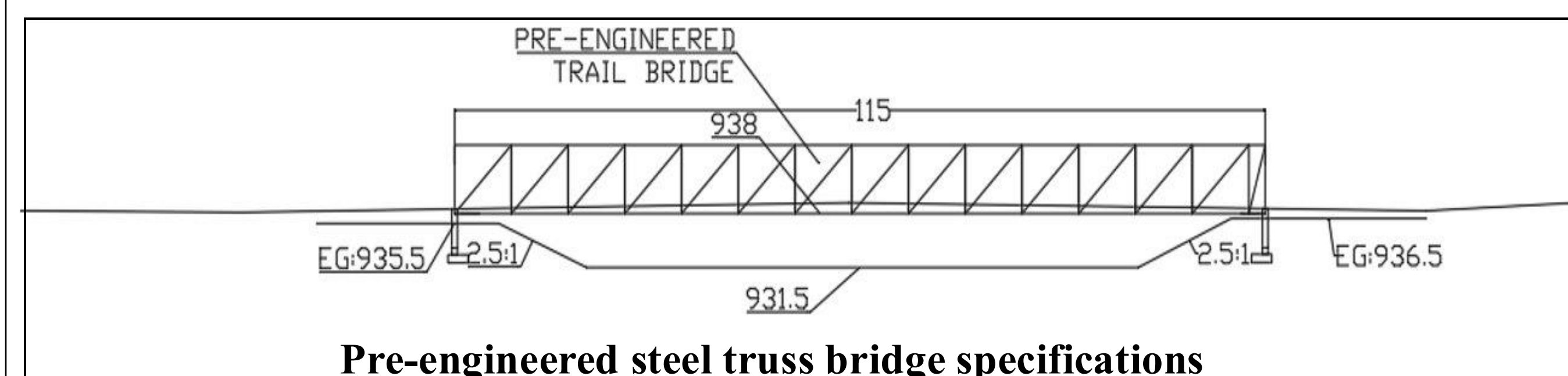
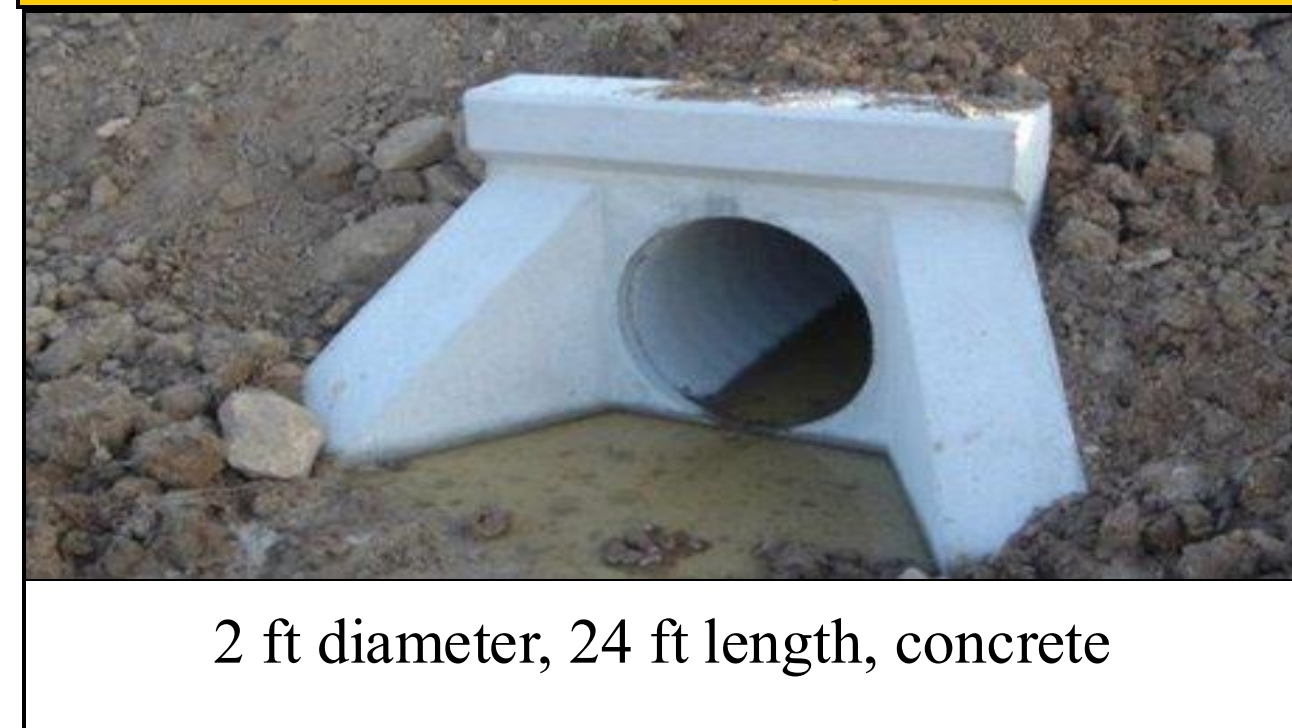
Ditch 2 – Trail Alignment



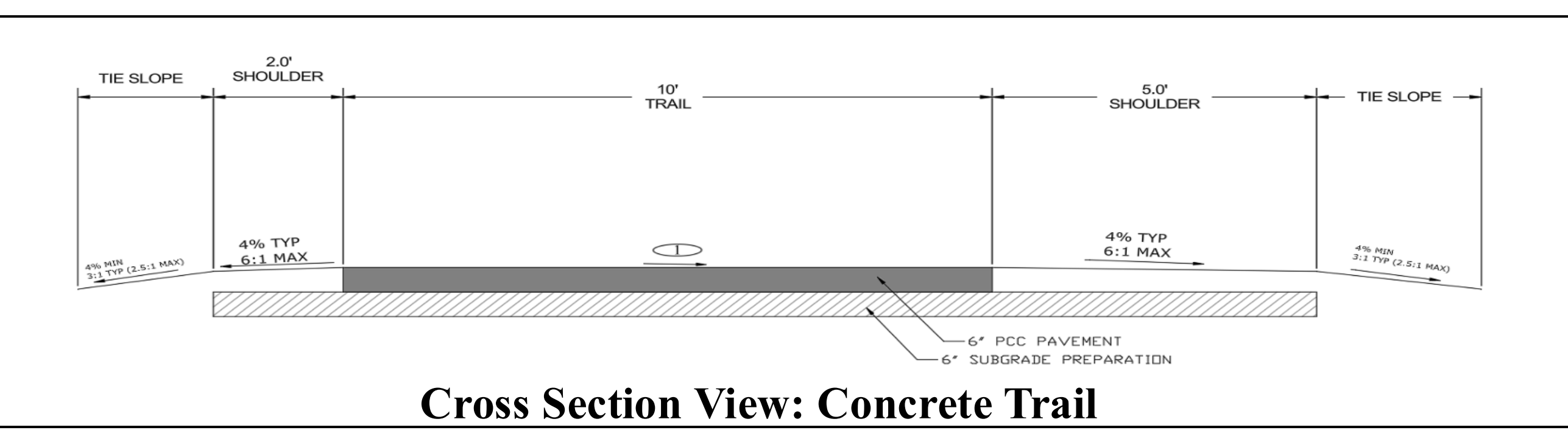
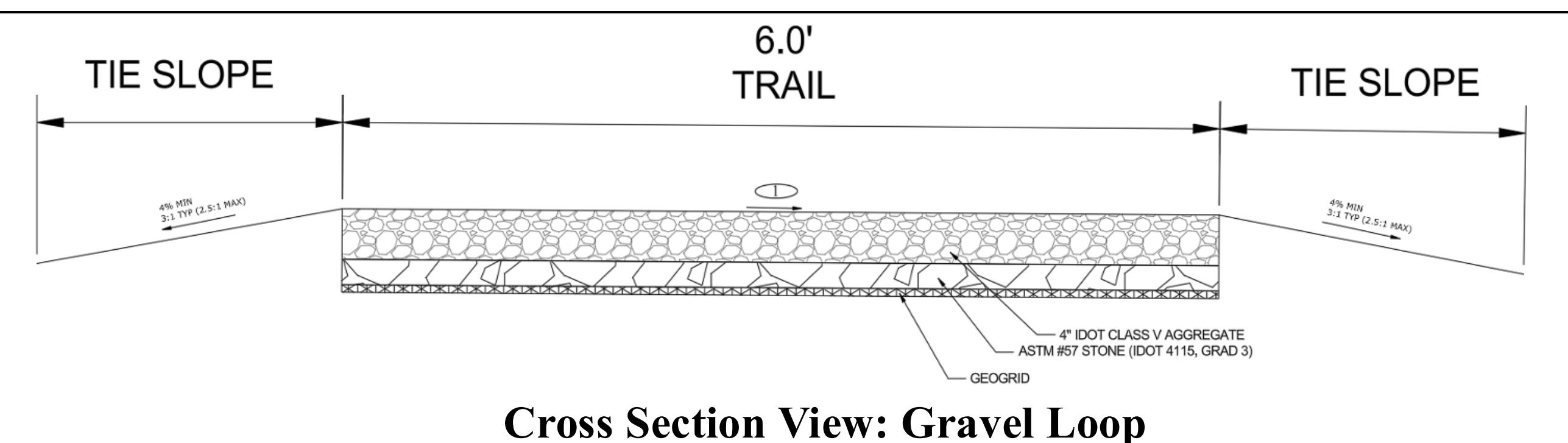
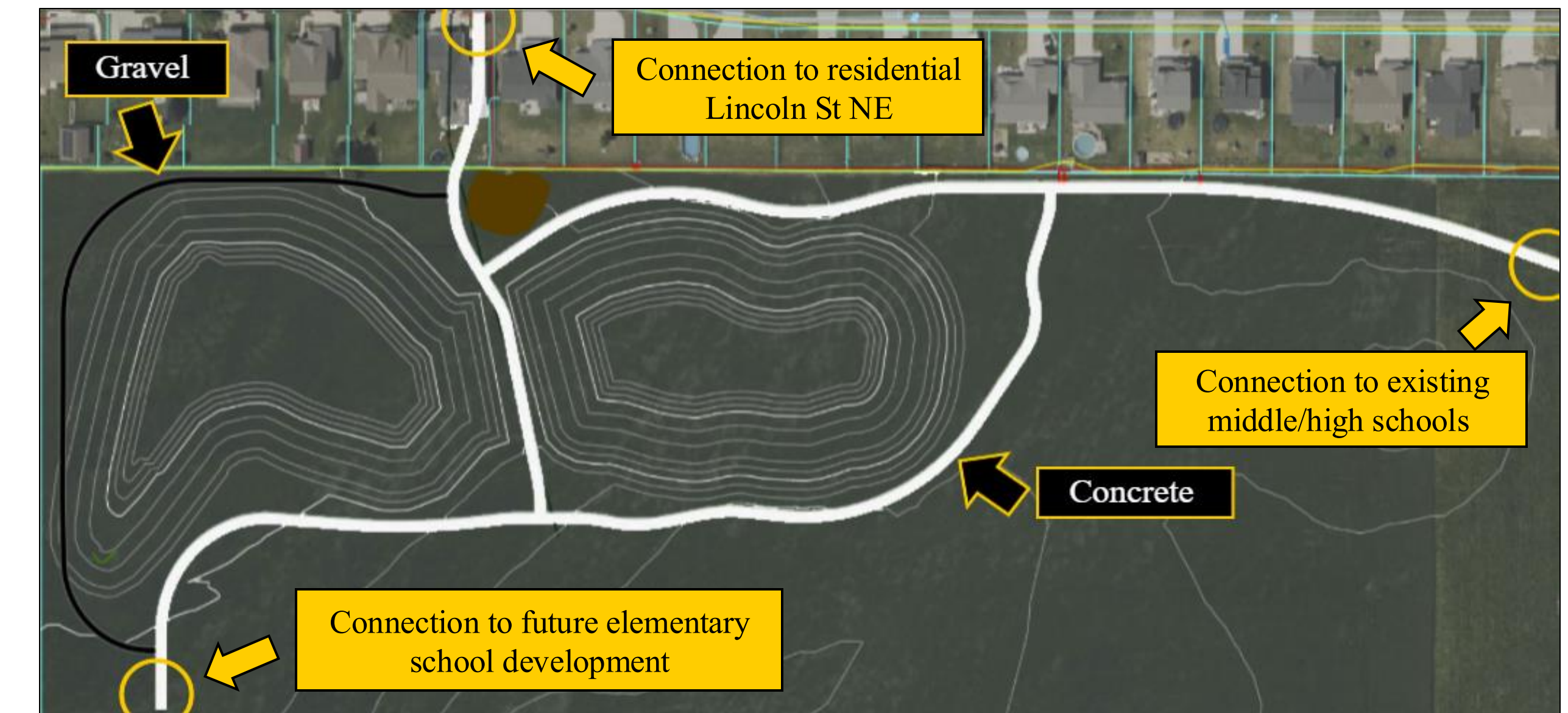
Bridge Design



Culvert Design



Pleasantview Park – Trail Alignment



Ross Certified Site – Trail Alignment

**Site has the same cross section as Ditch 2 alignment

