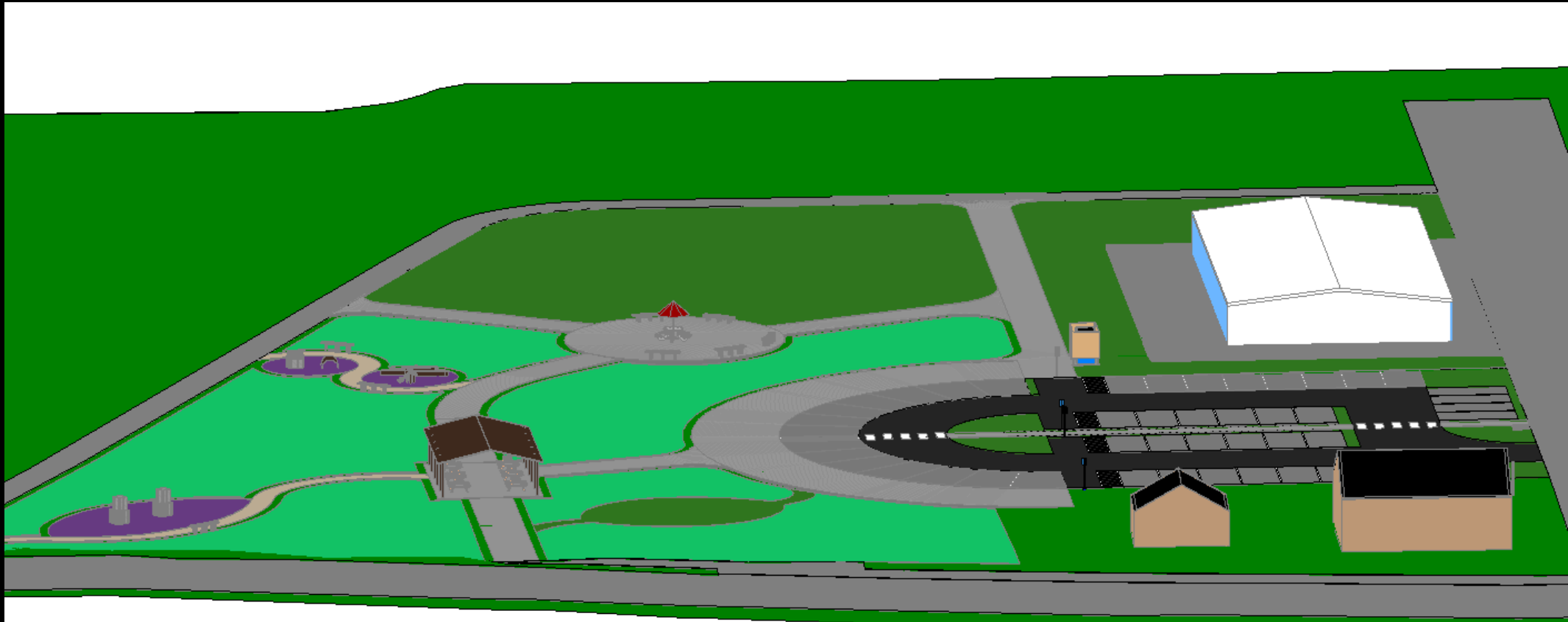


# Riverbank Parks: Unsightly Sites to Centers for Connection

**IOWA**



**Sam Greiner, Danny Scordato, Connor Owsianiak, & Lily VanderLinden**

Civil and Environmental Engineering

April 27th, 2026

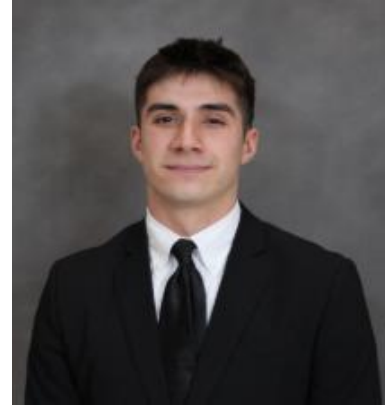
# Introductions



Sam Greiner

Major: Environmental Engineering

Focus area: Water Chemistry



Danny Scordato

Major: Environmental Engineering

Focus area: Geoscience



Lily VanderLinden

Major: Environmental Engineering

Focus area: Ecological Engineering

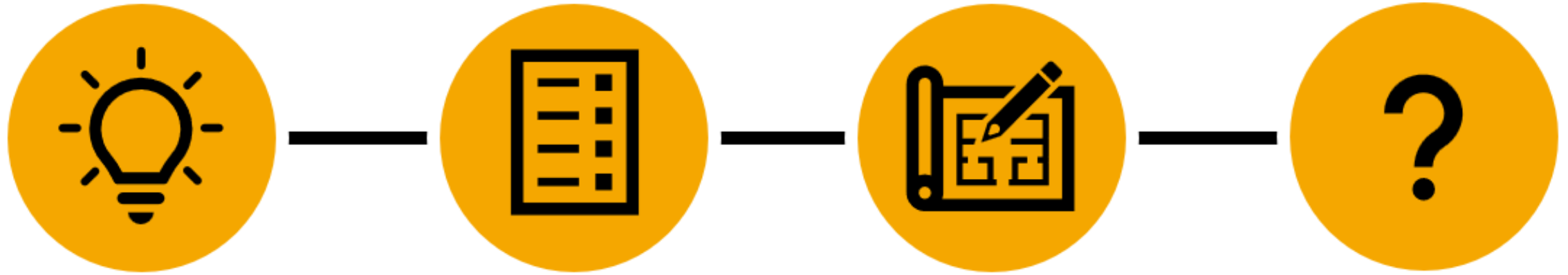


Connor Owsianiak

Major: Civil Engineering

Focus Area: Hydraulics and Water Resources

# Contents



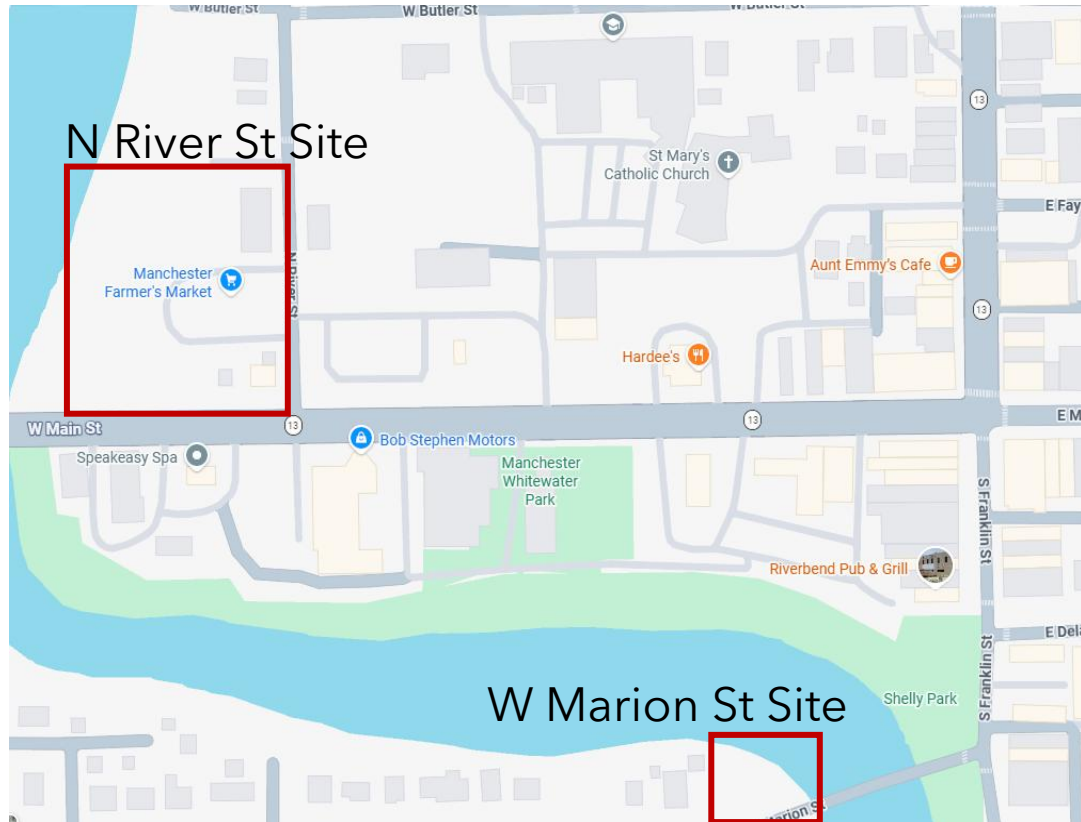
**Project Vision**

**Gravel Pit to  
Gathering Place**

**From Overlooked  
to Overlook**

**Questions**

The Riverbank Parks will transform existing eyesores into areas that promote community engagement.

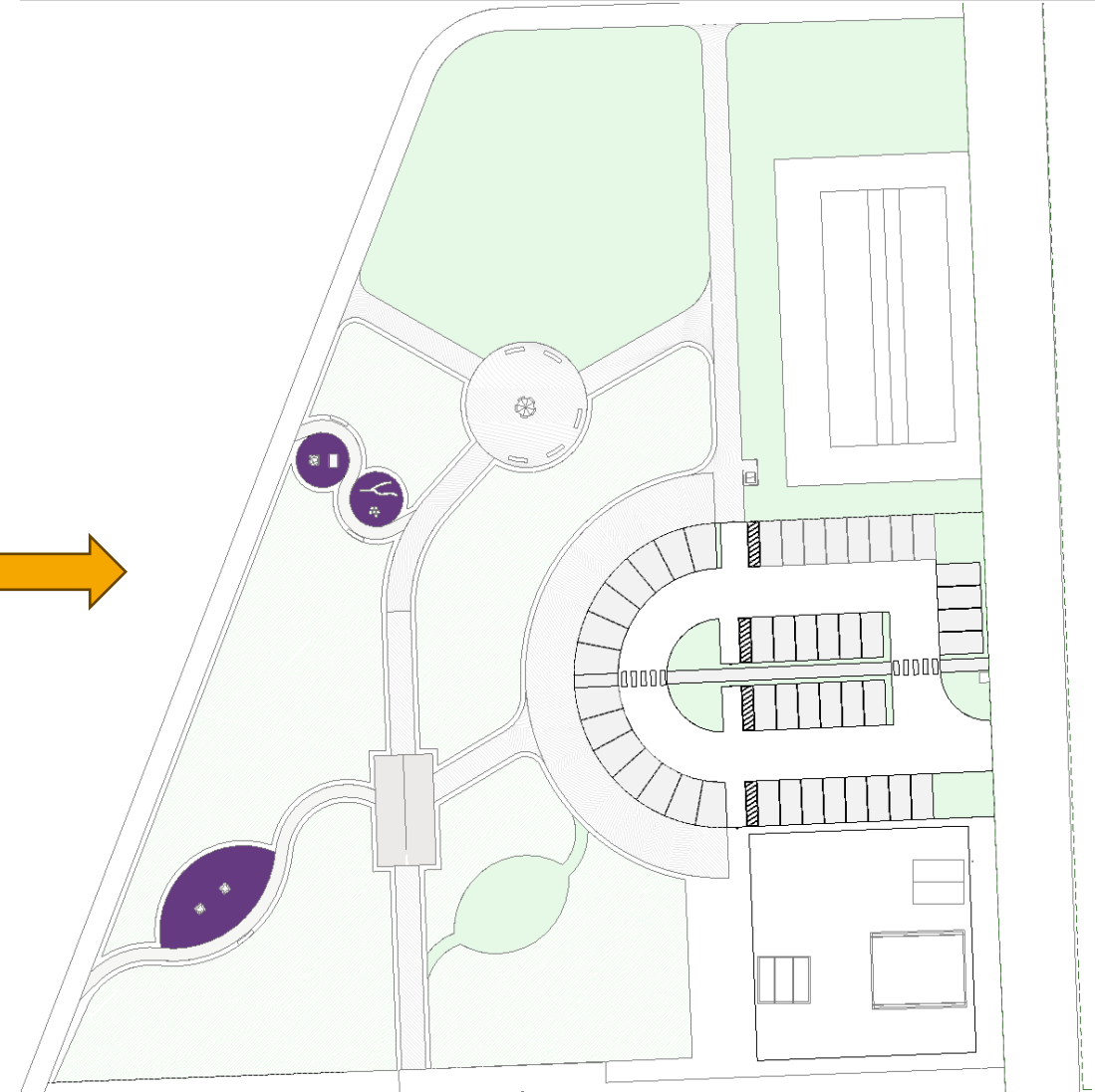


N River St and W Main St



Northwest of W Marion St.

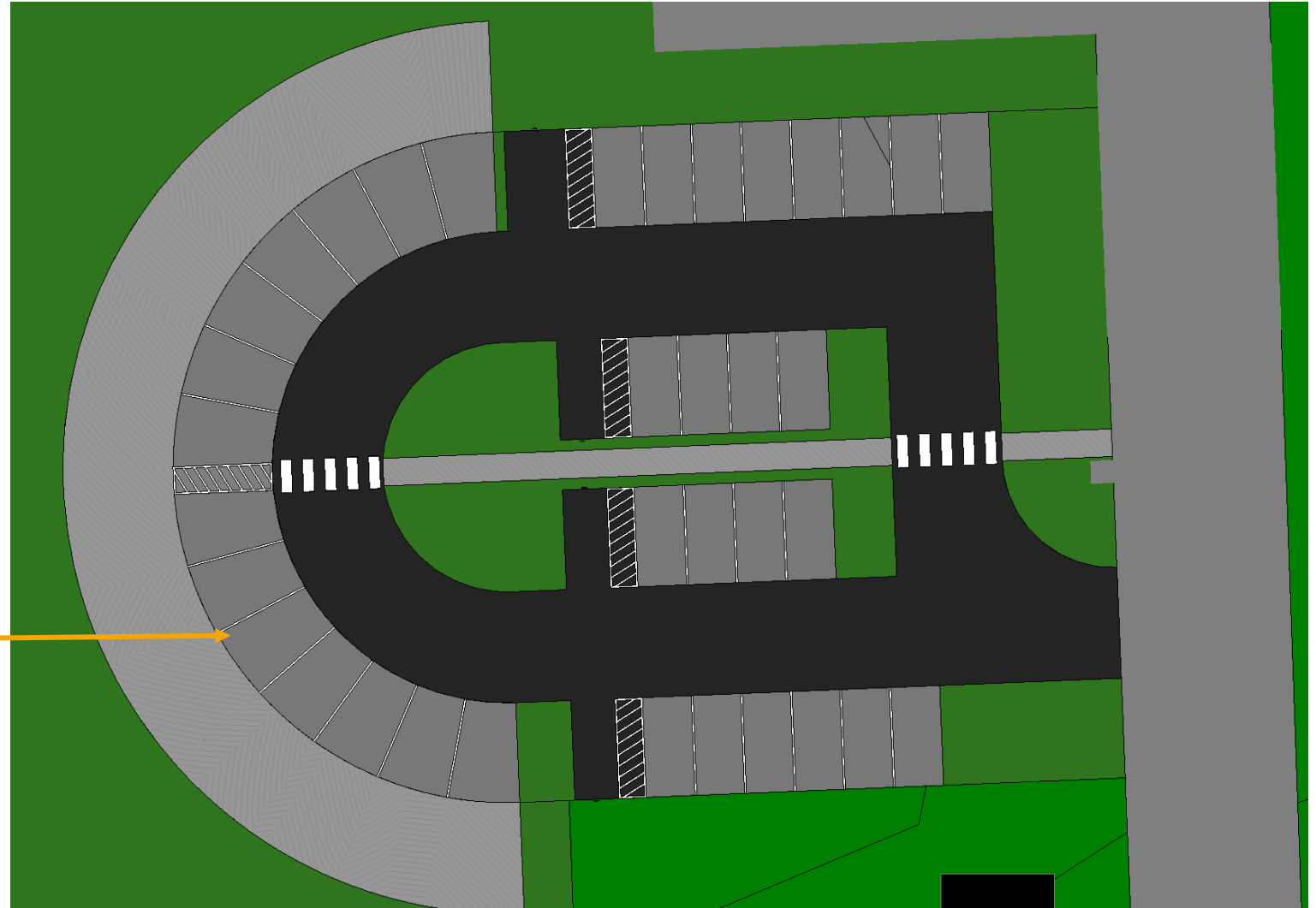
The N River St. site will be transformed from a gravel patch to a park that supports families and community functions.



The inclusion of green pavers and natural curves will create a parking lot aligned with aesthetic goals.

Farmers Market Features:

- 26 total customer parking spots
  - 3 ADA spots
  - 1 ADA van spot
- 14 vendor parking spots
- 5' walking path



Expanding the trail network will connect the community to each other, and to nature.



10' trail network through prairie and wildflowers



Stone picnic table and benches to foster conversations

7 - N River St Site

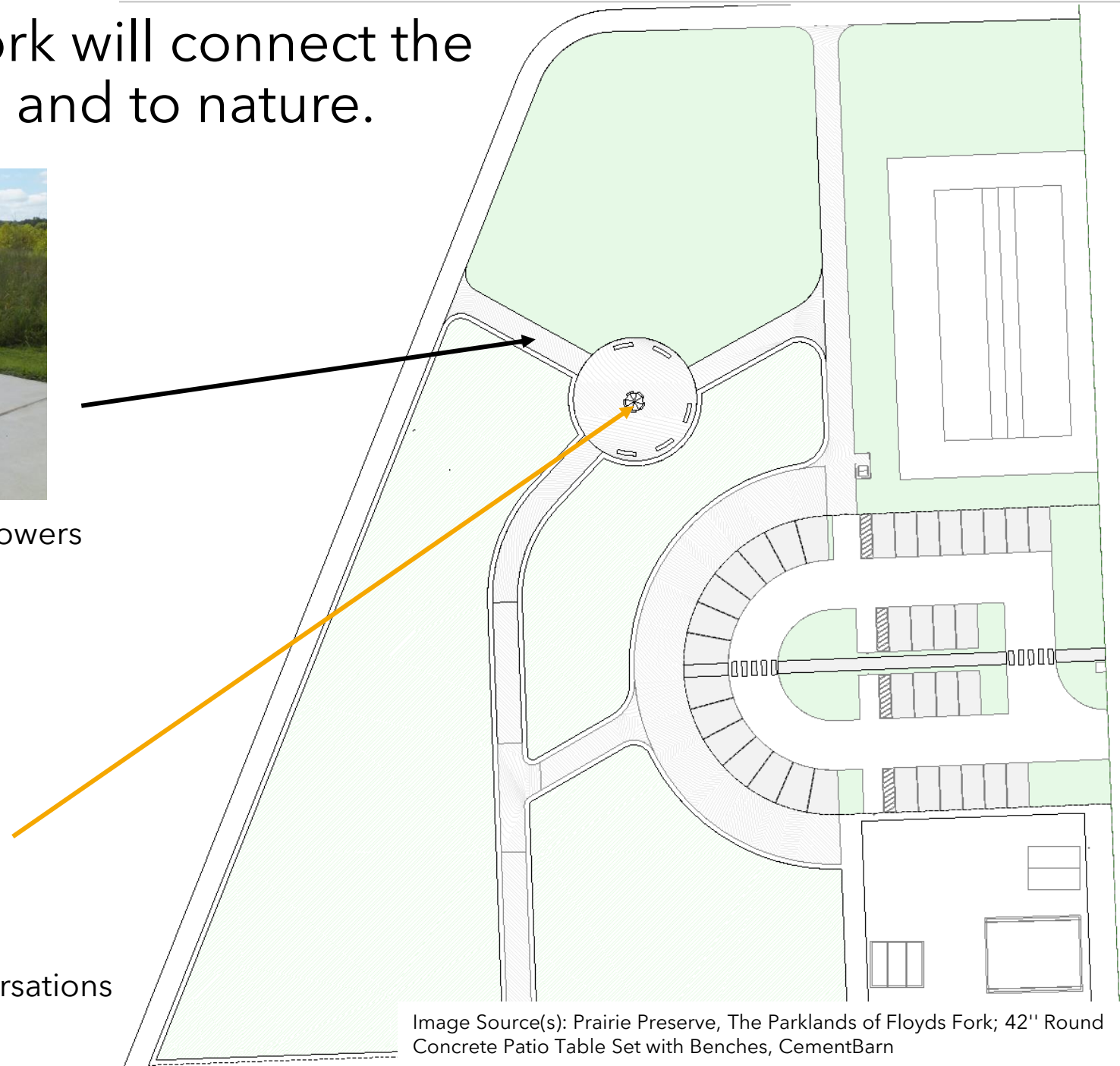
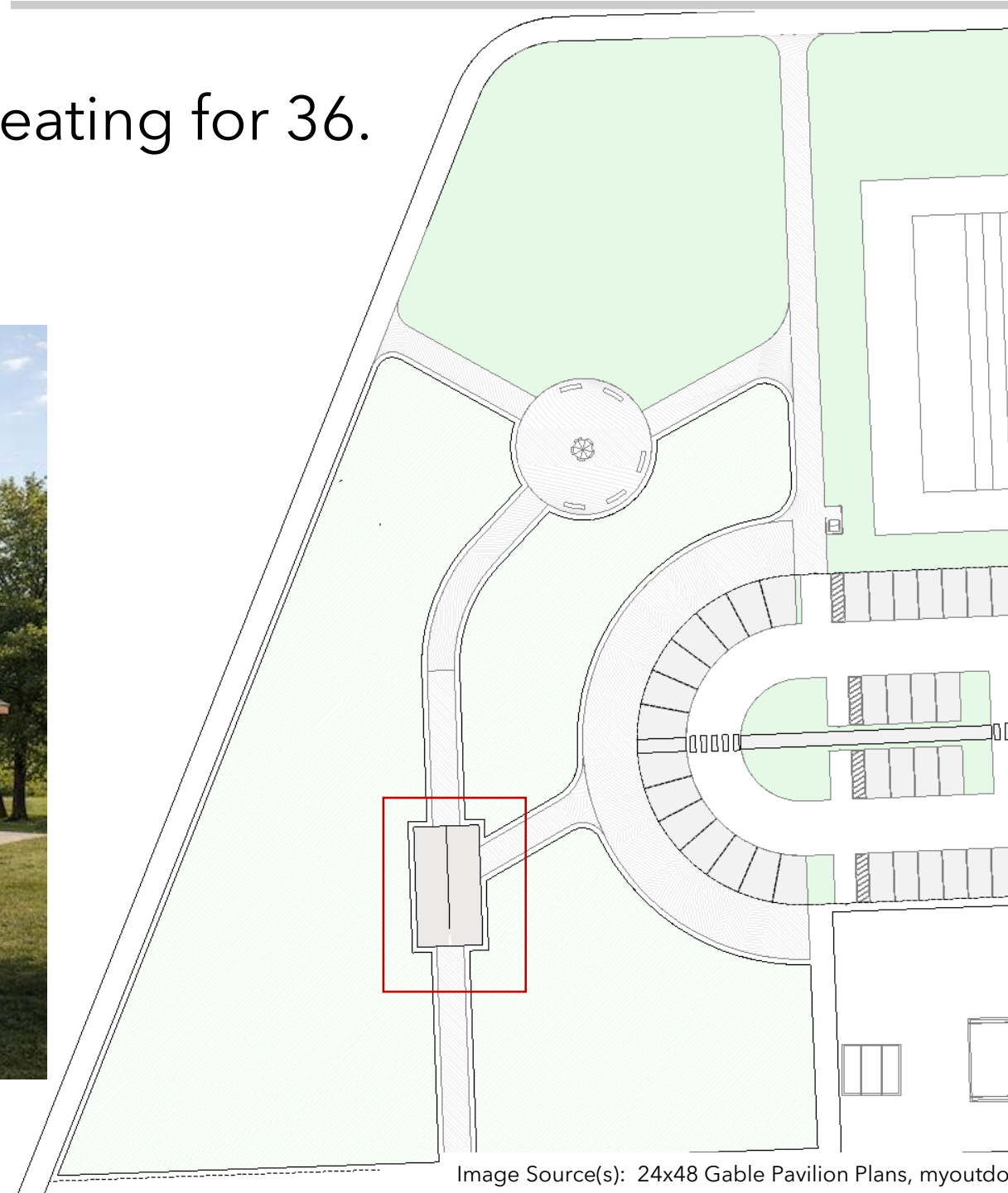


Image Source(s): Prairie Preserve, The Parklands of Floyds Fork; 42" Round Concrete Patio Table Set with Benches, CementBarn

A 1056 sqft wooden pavilion with seating for 36.



Unique play spaces will attract families and entertain children.



Nature-based risk play features offers an alternative recreation option compared to nearby parks.



Play features tailored for younger kids

Large climbing rock for older kids

# Low maintenance body weight fitness machines will promote healthy habits



Minor changes to the W Marion St. Site will create a space to relax and lookout over the city.



W Marion St. Site viewed from Shelly Park



Shelly Park and downtown viewed from W Marion St.

The existing conditions are unsafe and unappealing, preventing community use.



Thick brush requiring significant maintenance

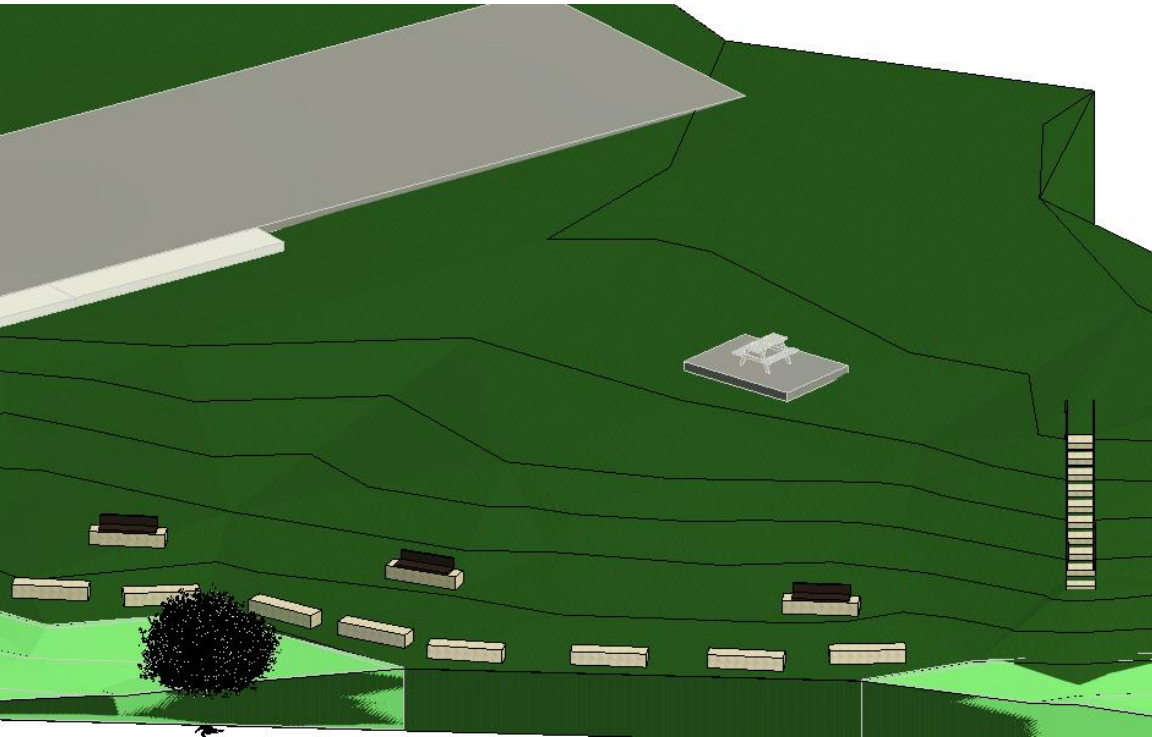


Stairs down to lower level in disrepair



Unsafe slope to the riverbank

This space will be revitalized by making it safer and more cohesive with Shelly Park.



Limestone blocks along lookout



Limestone staircase



Reformed seating



# Questions?

